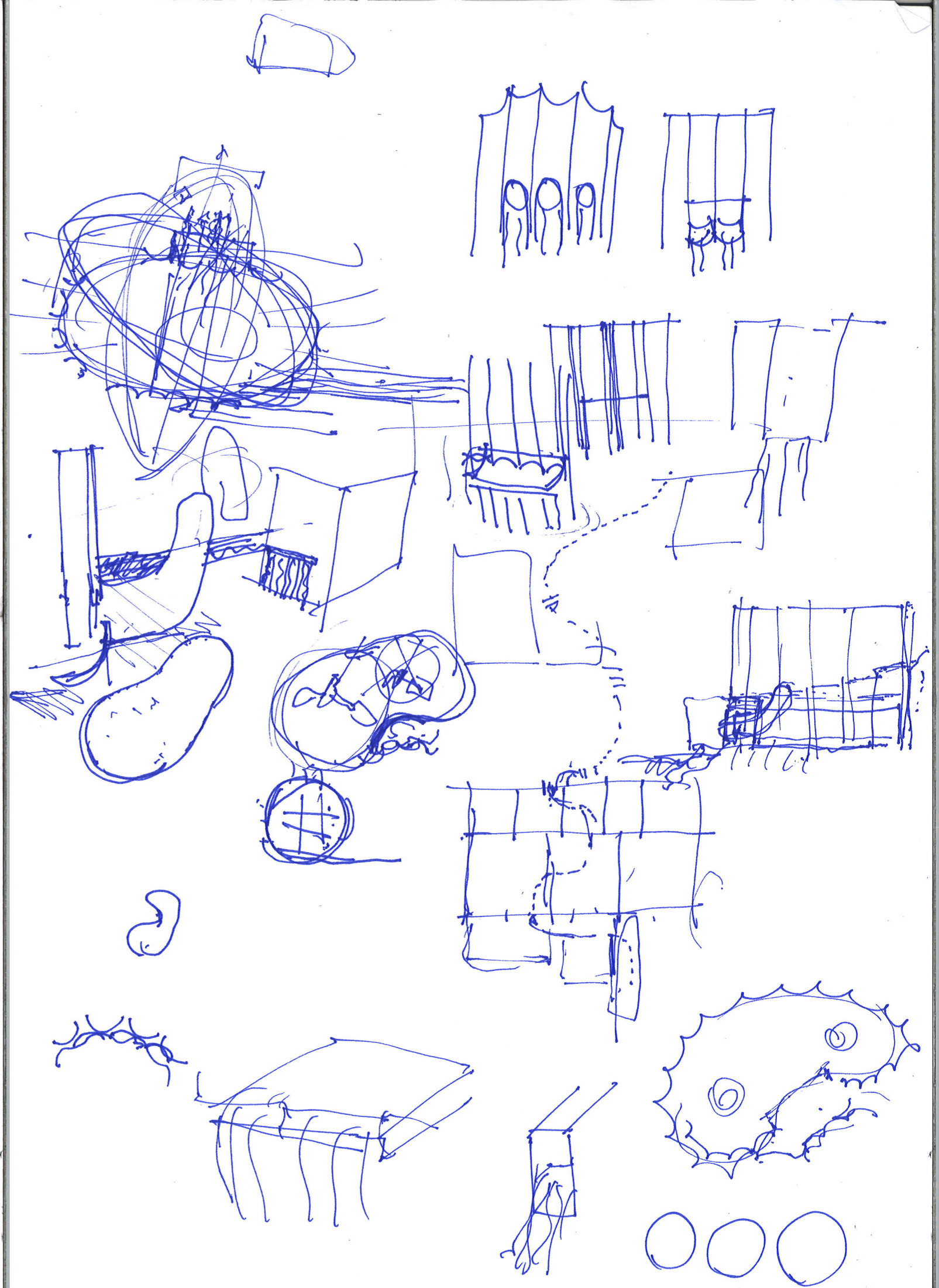
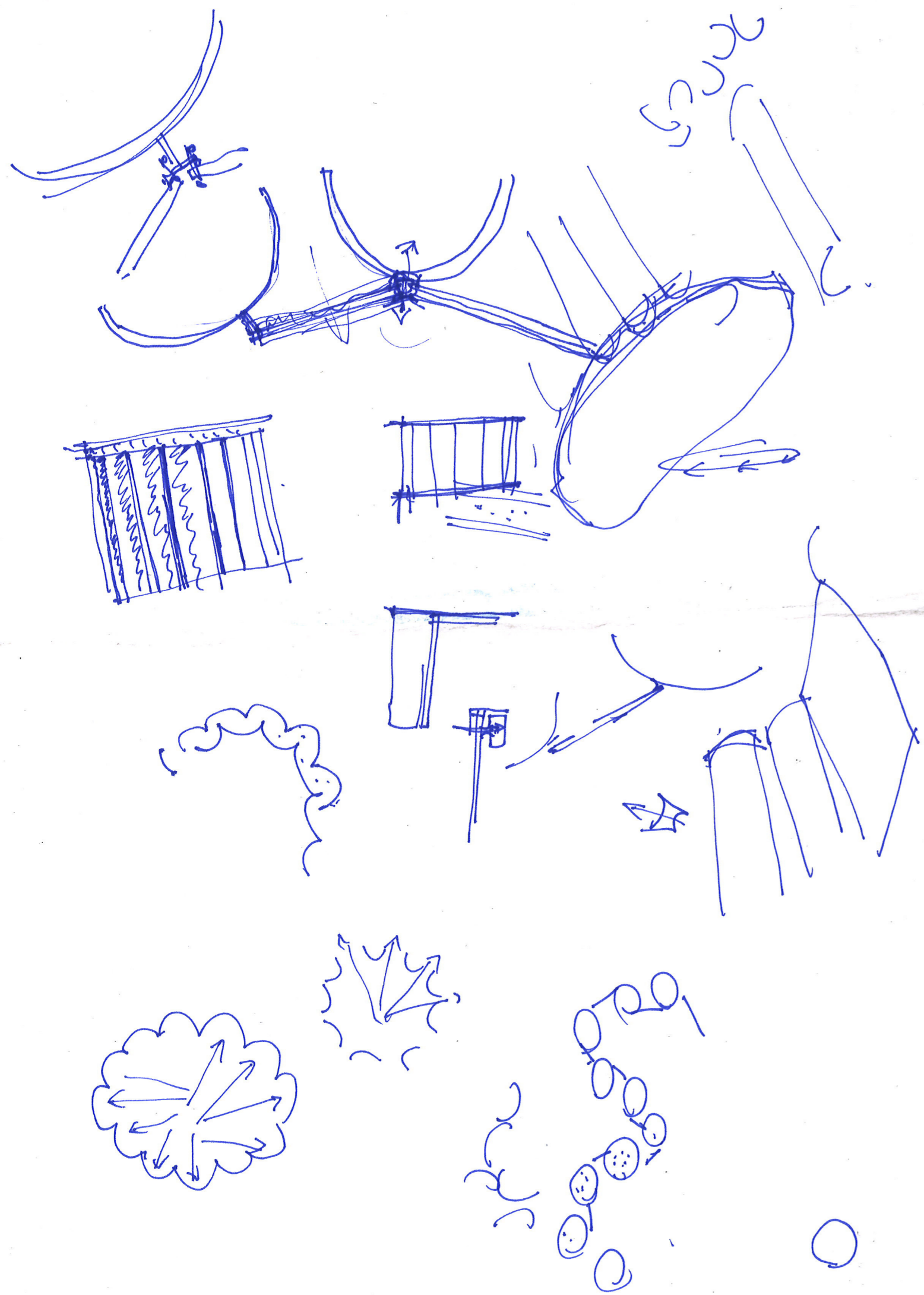
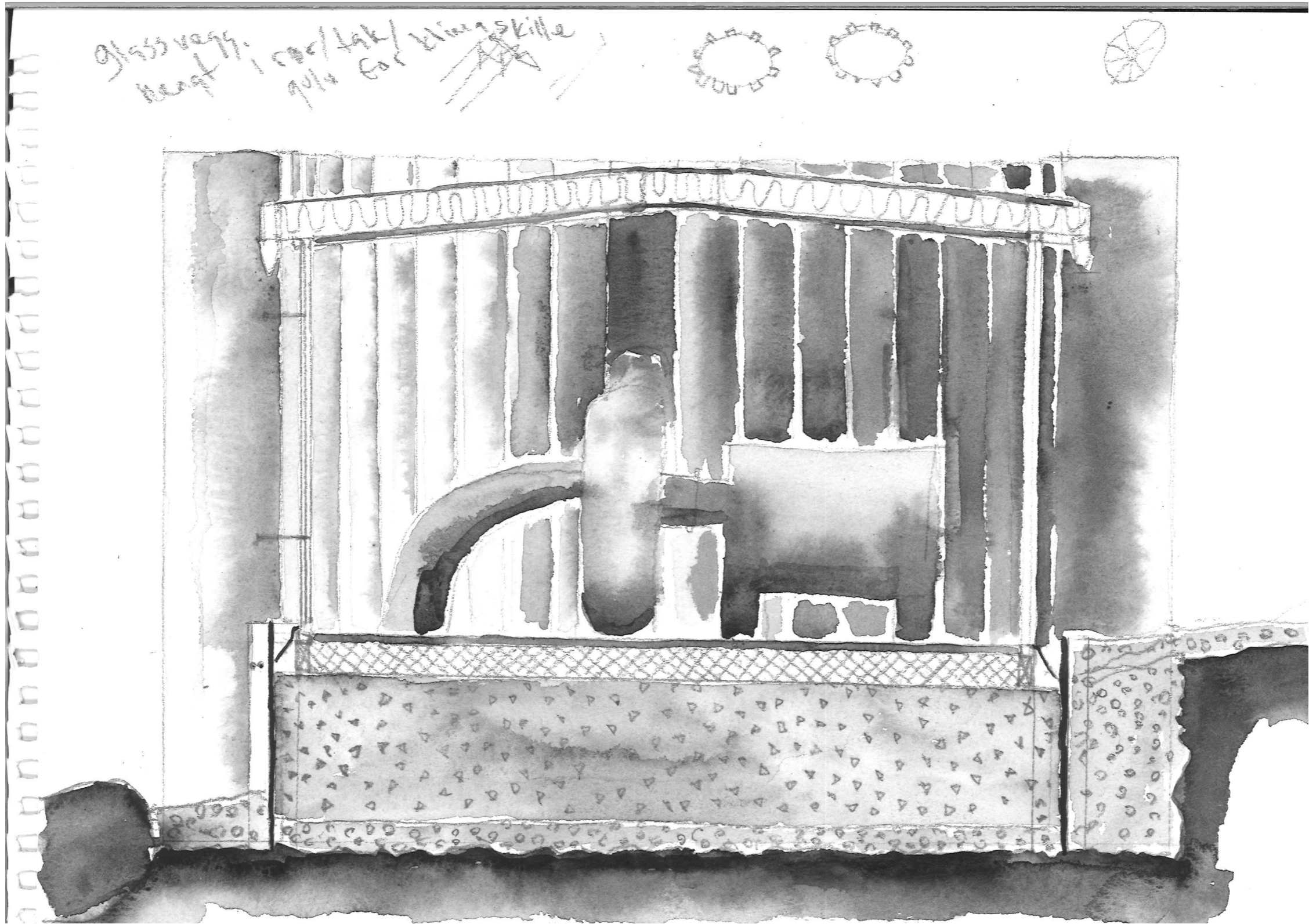


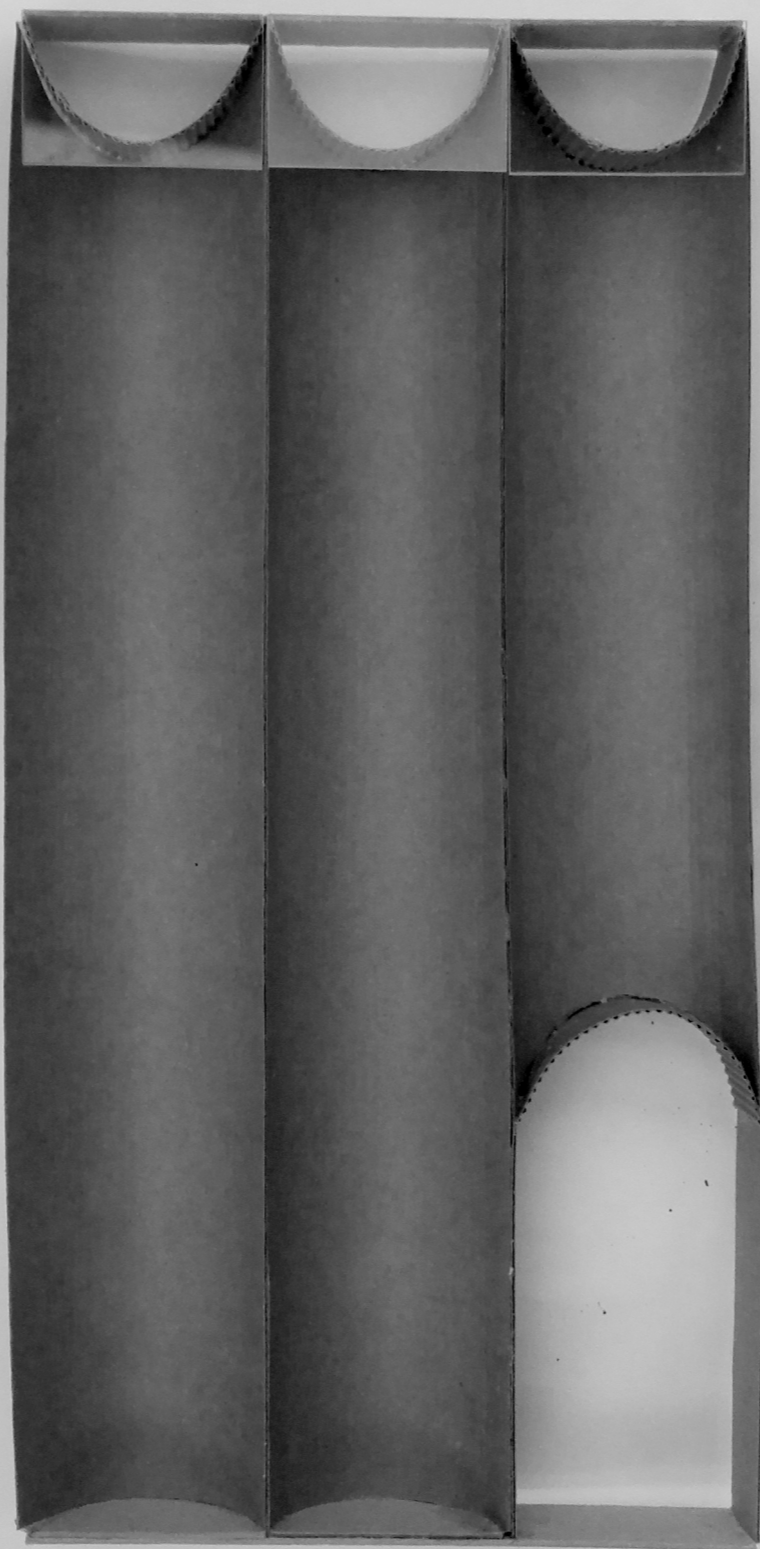
- ellipse
- fundament
- trestruktur
- vannutløp

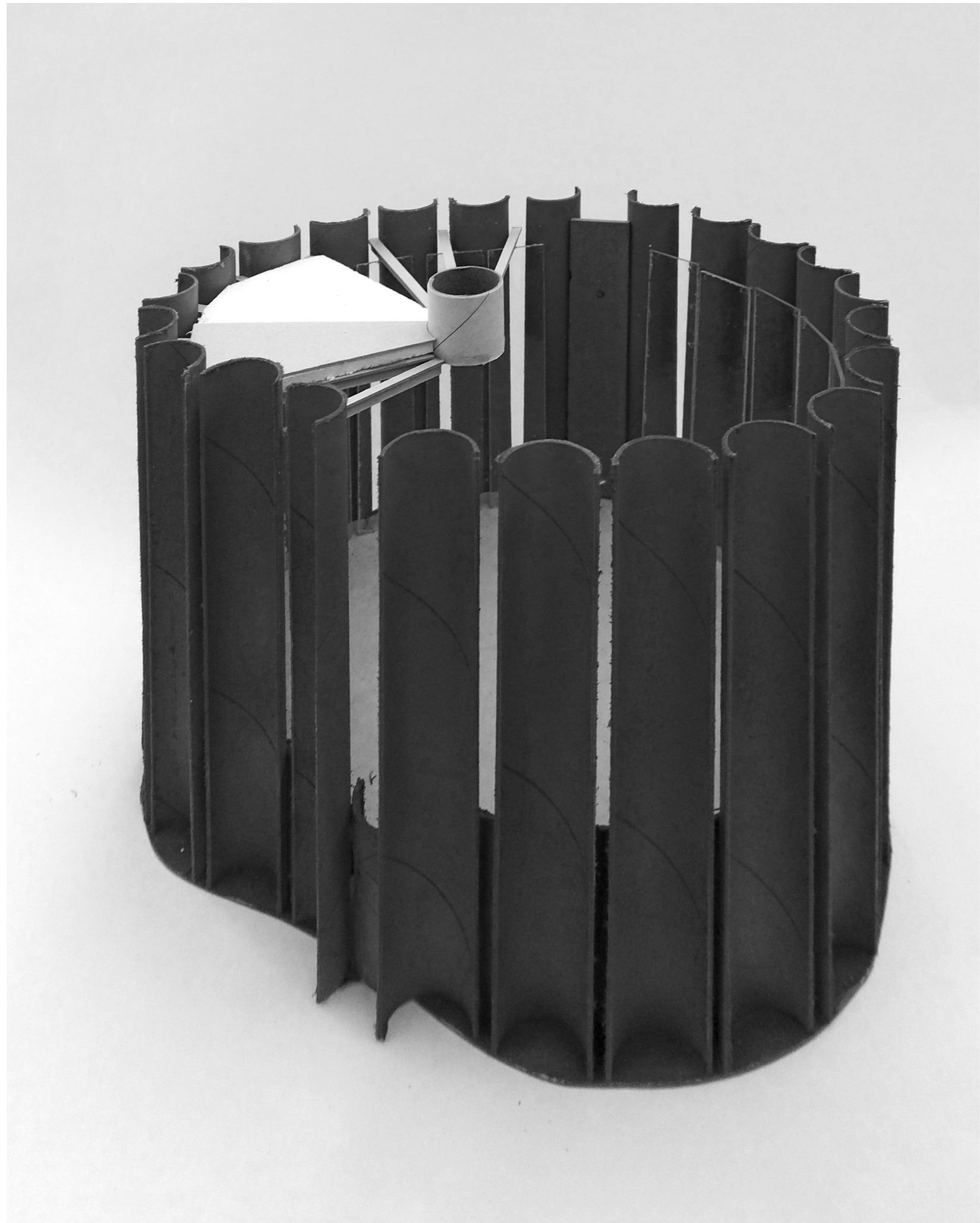


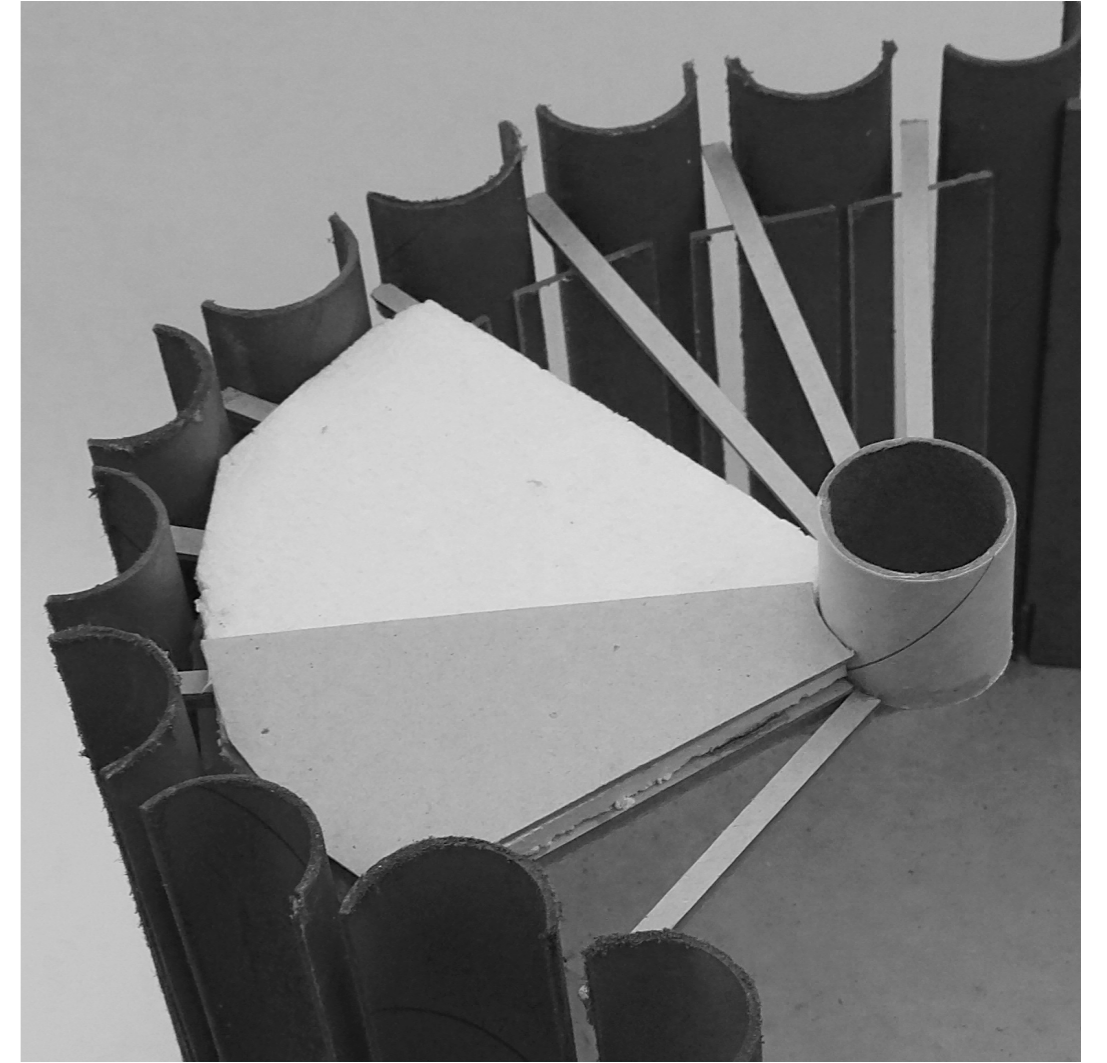


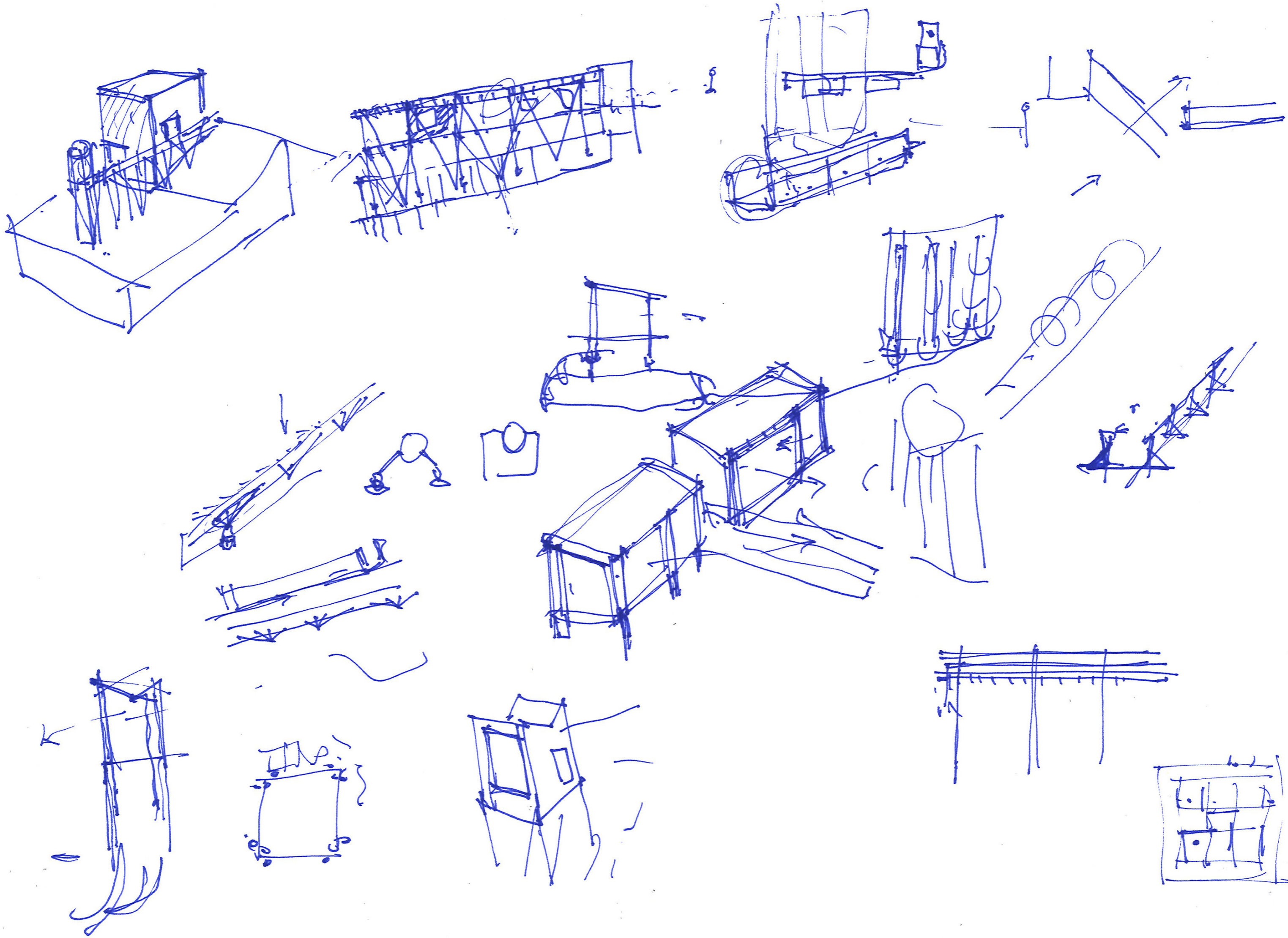
glass vegg
veggt, 100/100/100
gule for klingskille

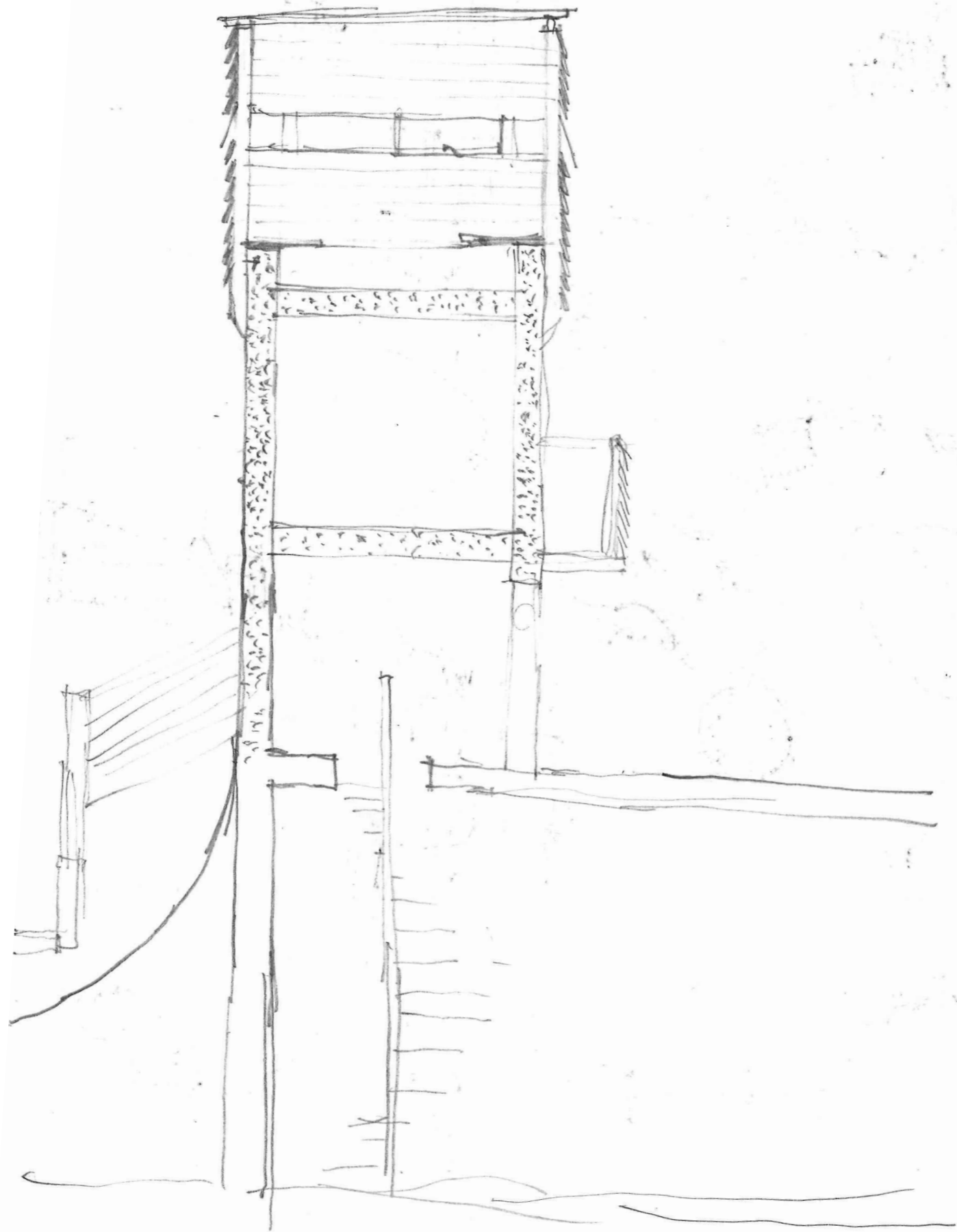


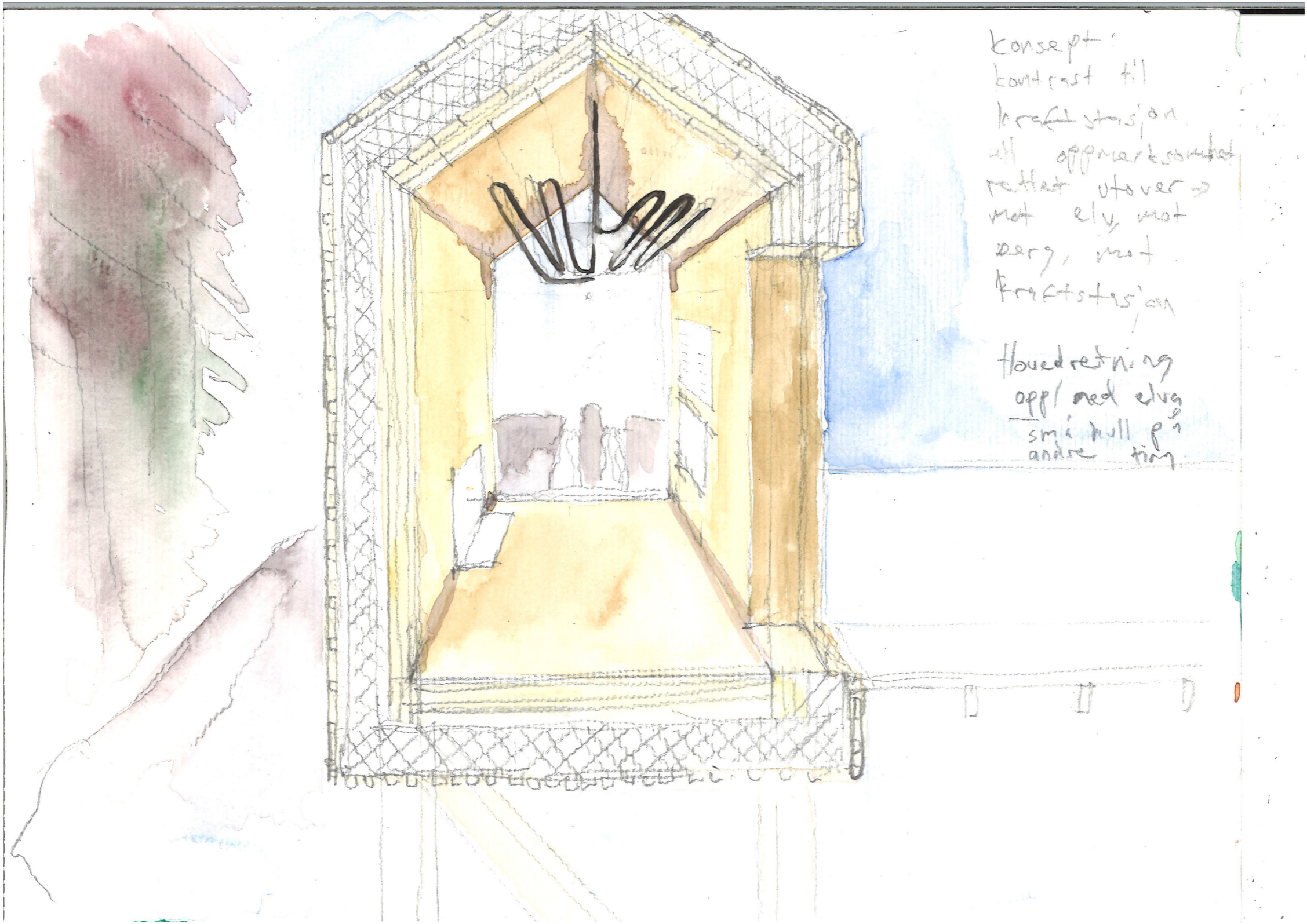












konsept:
 kontrast til
 kraftstasjon,
 all oppmerksomhet
 rettet utover
 mot elv, mot
 berg, mot
 kraftstasjon

fluedretning
 opp med elv
 smi hull på
 andre ting