

Sulisjælbmá

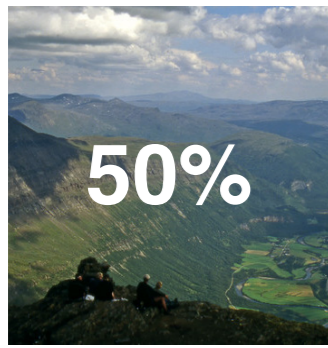
EXTRA MATERIAL

JOHAN BY SØRHEIM

SUPERVISED BY

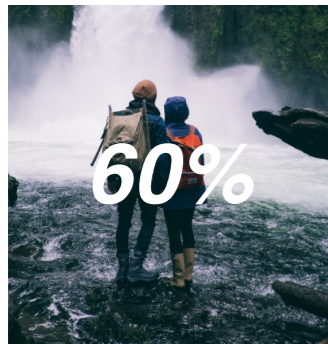
ERIK FENSTAD LANGDALEN

STATISTICS FOR TOURISM IN THE REGION



1. NATIONALITY

- norway - 50%
- germany - 13%
- britain - 4%
- france - 3%
- netherlands - 3%
- sweden - 2%
- usa - 2%
- italy - 2%
- denmark - 1%



2. TRAVELERS

- couples w/o kids - 60%
- group of friends - 20%
- couples w/ kids - 14%
- single - 6%



3. TRANSPORT

- airplane - 55%
- car - 14%
- camper - 13%
- ferry - 8%
- bus - 4%
- train - 3%
- motorcycle - 3%



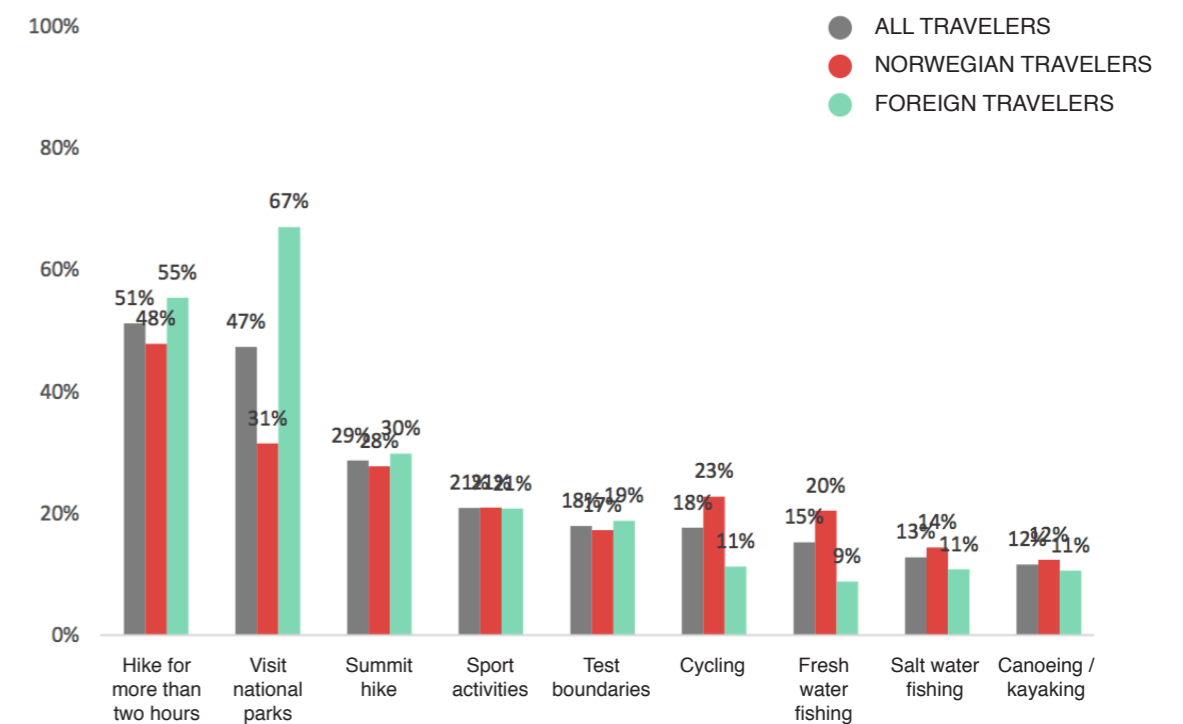
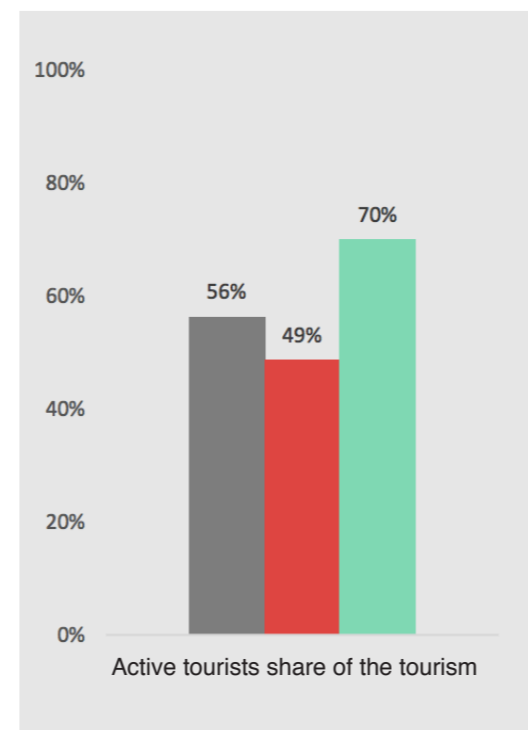
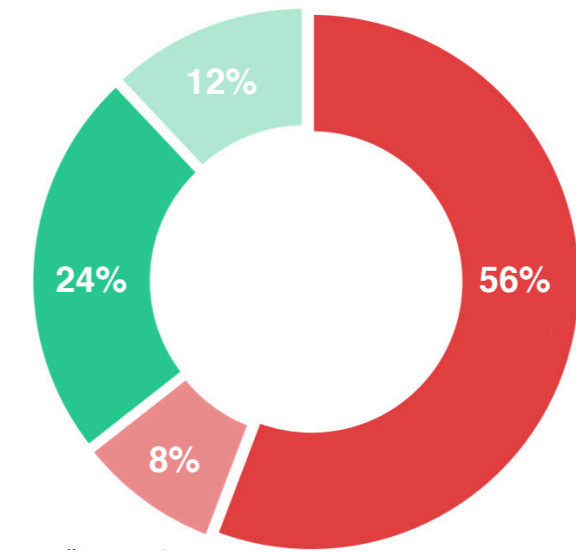
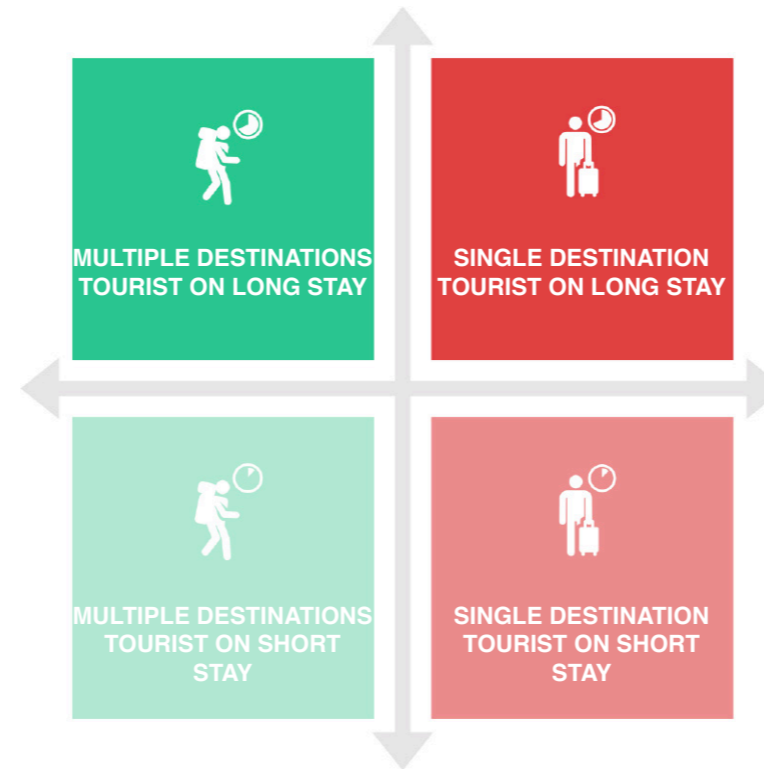
4. ACCOMMODATION

- hotel/hostel - 65%
- tent/camper - 16%
- camping site - 12%
- in nature - 7%



5. AVERAGE

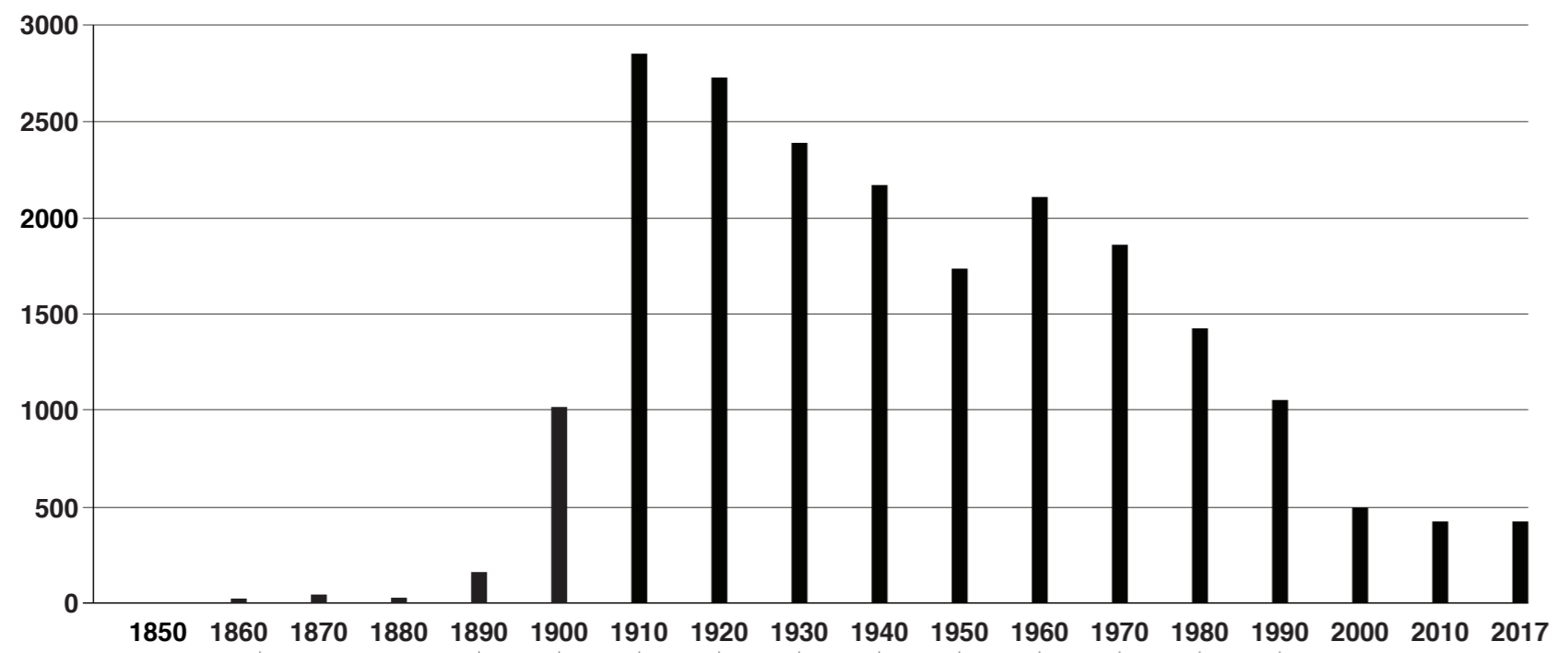
- age - 52,5
- nights spent - 11,9
- travelers - 2,3
- daily use - 2155



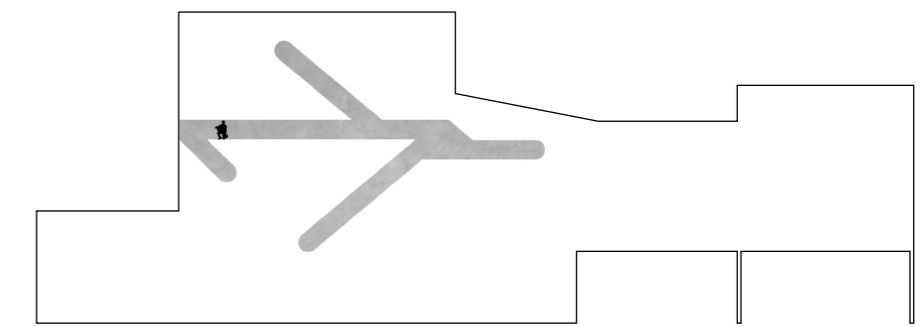
- Has a minimum of four nights in the region and over half of the total overnight stays in the region
- Has less than four nights in the region but over half of total overnight stays in the region
- Has a minimum of four nights in the region but only half or less than half of total overnight stays in the region
- Has less than four nights in the region and only half or less than half of total overnight stays in the region



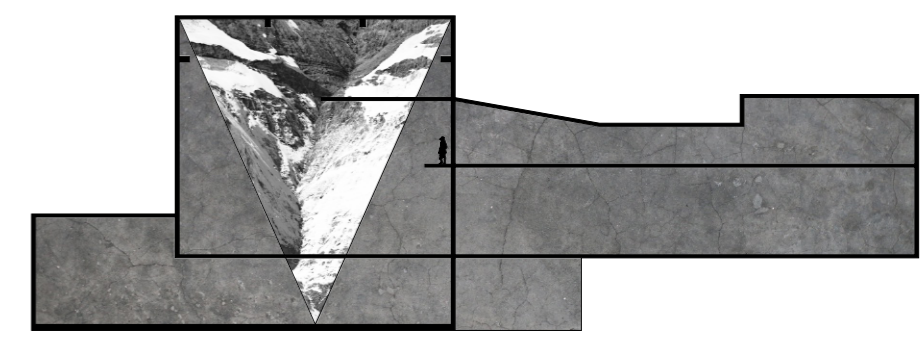




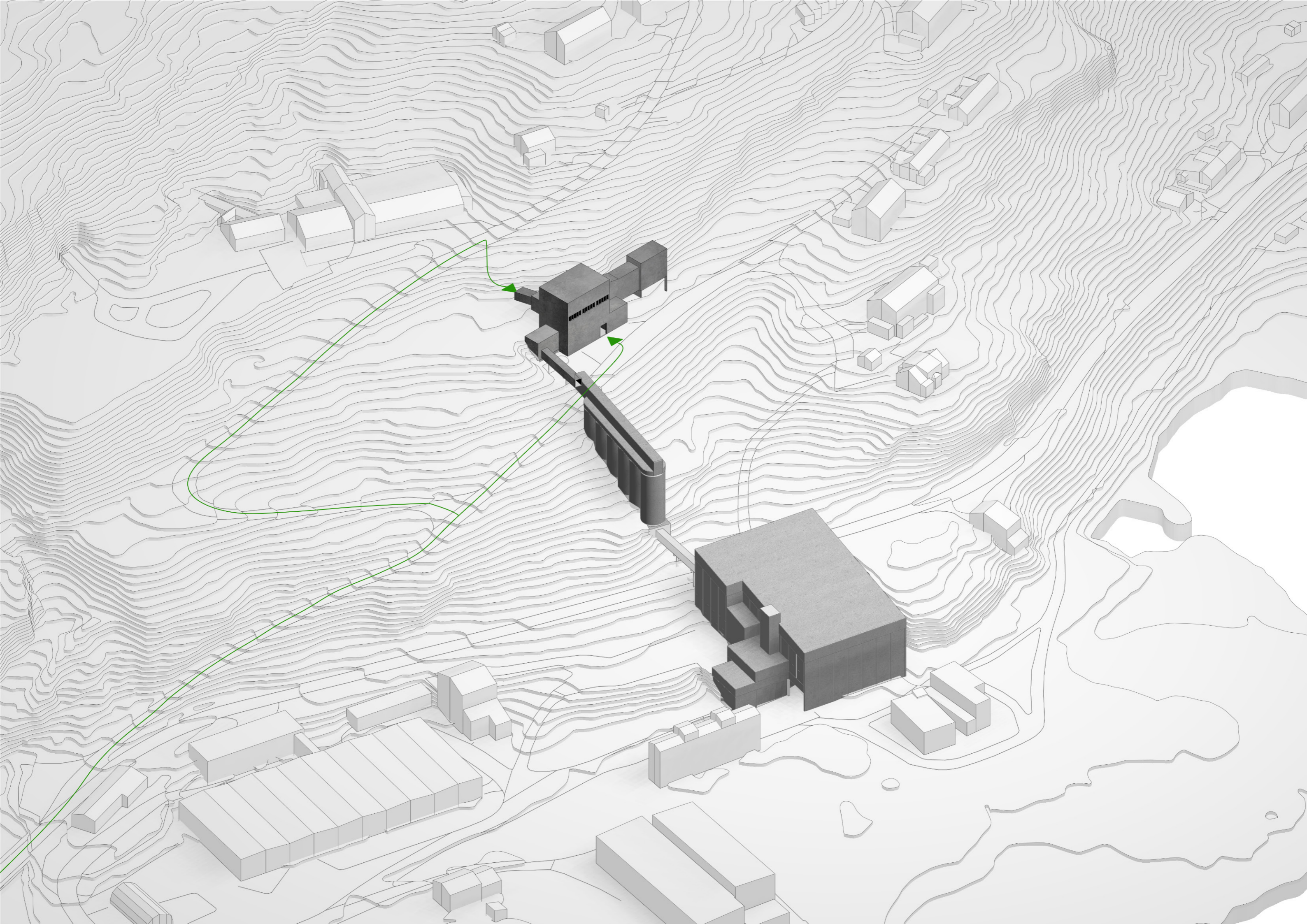
NORDFELTET	
MONS PETTER 1	1890 - 1915
GIKEN 1	1895 - 1975
NY SULITJELMA	1900 - 1965
CHARLOTTA 1	1900 - 1970
HANKABAKKEN 1	1905 - 1980
BURSI	1910 - 1980
STURE	1910 - 1960
GUDRUN	1915 - 1960
PALMBERG	1920 - 1945
GIKEN 2	1965 - 2015
CHARLOTTA 2	1965 - 2015
HANKABAKKEN 2	1970 - 2015
MONS PETTER 2	1975 - 1990
SØRFELTET	
FURUHAUGEN	1895 - 1925
JAKOBSBAKKEN	1900 - 1970
SAGMO	1910 - 2015



2. DIG OUT

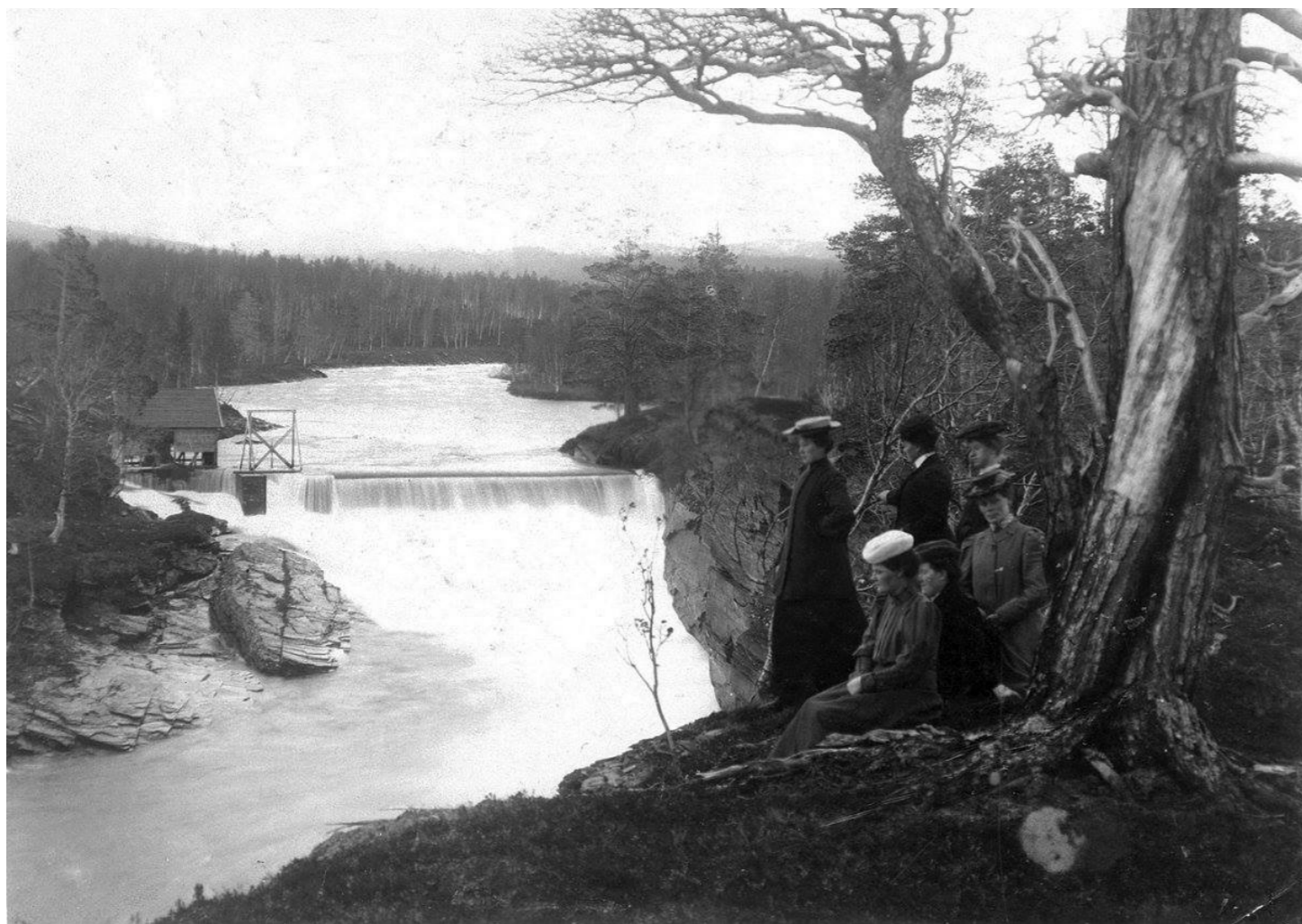
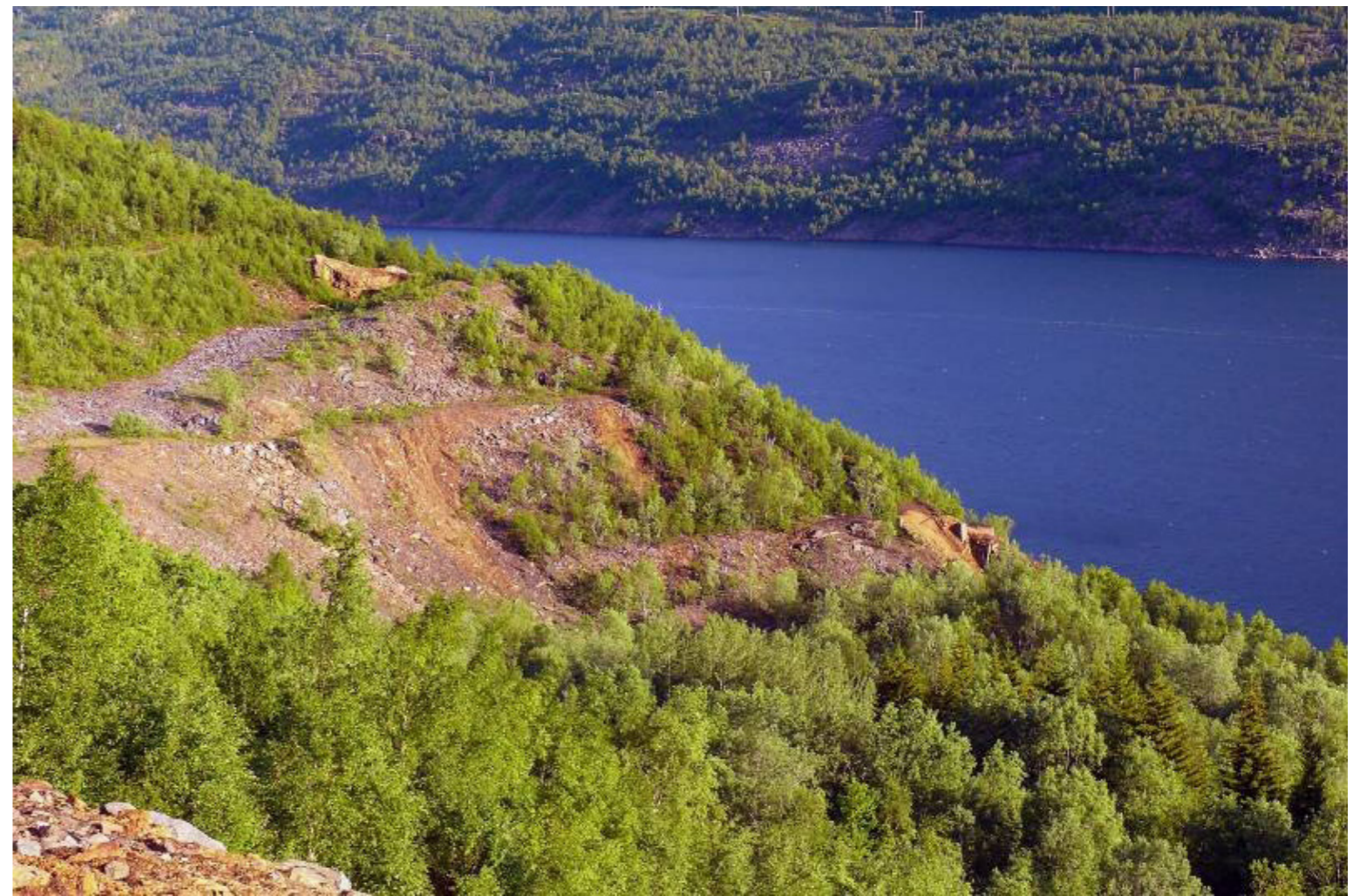
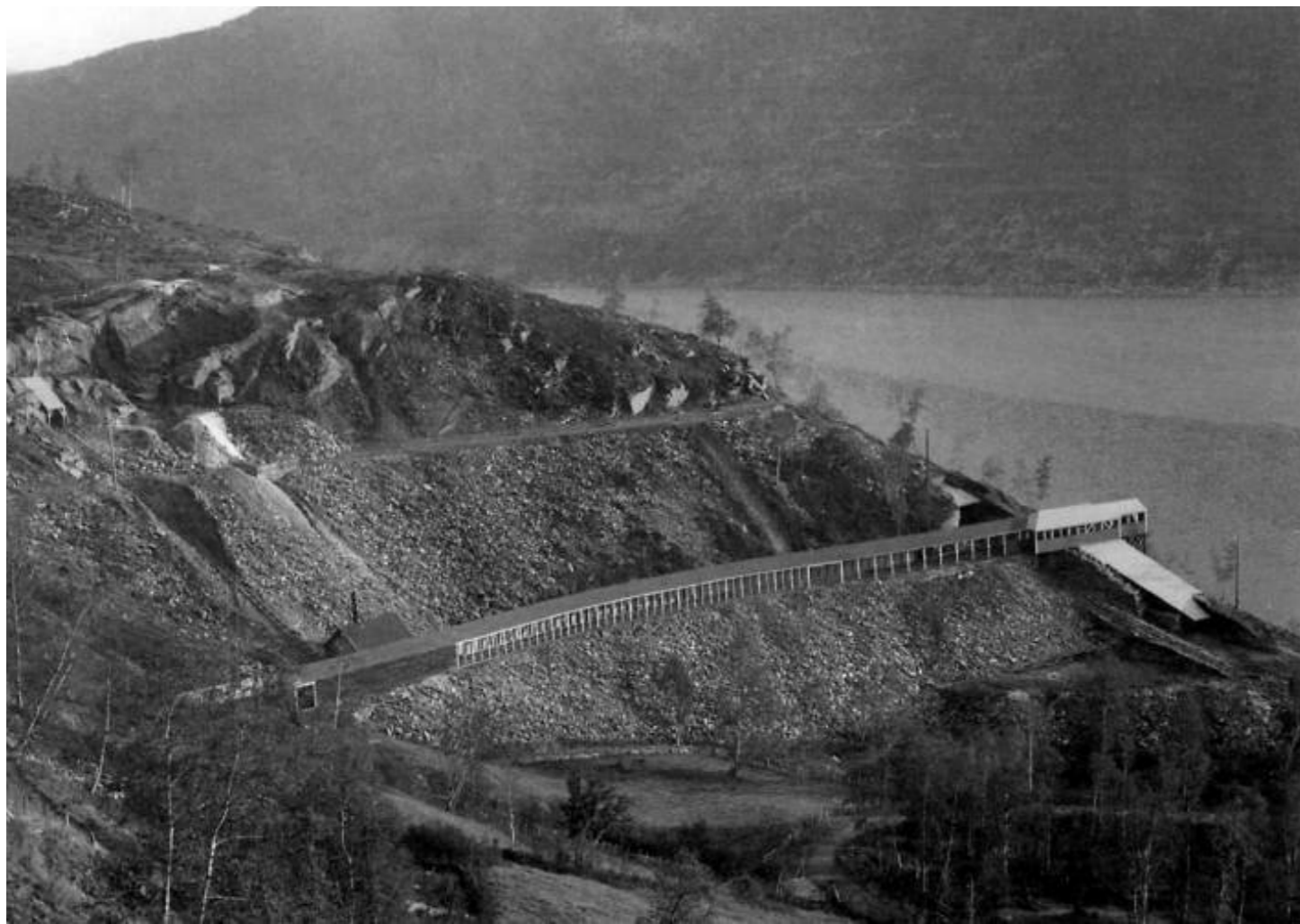


3. CAMERA OBSCURA









Livsfarlig lekeplass i Sulitjelma



I disse omgivelsene kan ungene i Sulitjelma boltre seg fritt. Før portene ble brutt opp ble området rundt bygget beskrevet som farlig for omgivelsene. Foto: jan-olav ingvaldsen

Av [Jan-Olav Ingvaldsen](#)

25. april 2007, kl. 22:00 ▾

I denne bygda vil de investere en halv milliard



Det gamle gruvesamfunnet i Nordland kan få nytt liv. Foto: Dag Pettersen

Av [Dag Pettersen](#)

12. januar 2014, kl. 23:01 ▾

- Det er en farlig lekeplass



VARSKO HER. Rune Reisænen, Trond Heimtun og Per Pettersen foran flotasjonsbygget på Sandnes som de har sikret etter barn har vært inne og lekt i bygget - flere ganger. Alle foto: Sylvia Bredal

Nå har Fauske kommune sikret flotasjonsbygget i Sulis etter at det har vært unger inni bygget.

Spennende fremtid for Sulitjelma



Flere gode krefter har gått sammen for å diskutere utviklingsmulighetene i Sulitjelma.

Kjetil Sørbotten, Steinar Skogstad, Ingelin Noresjø, Morten Steffensen, Tom Vidar Karlsen, Tove Mette Mæland og Linda Salamonsen



No. 28. Sulitjelmatoppene.









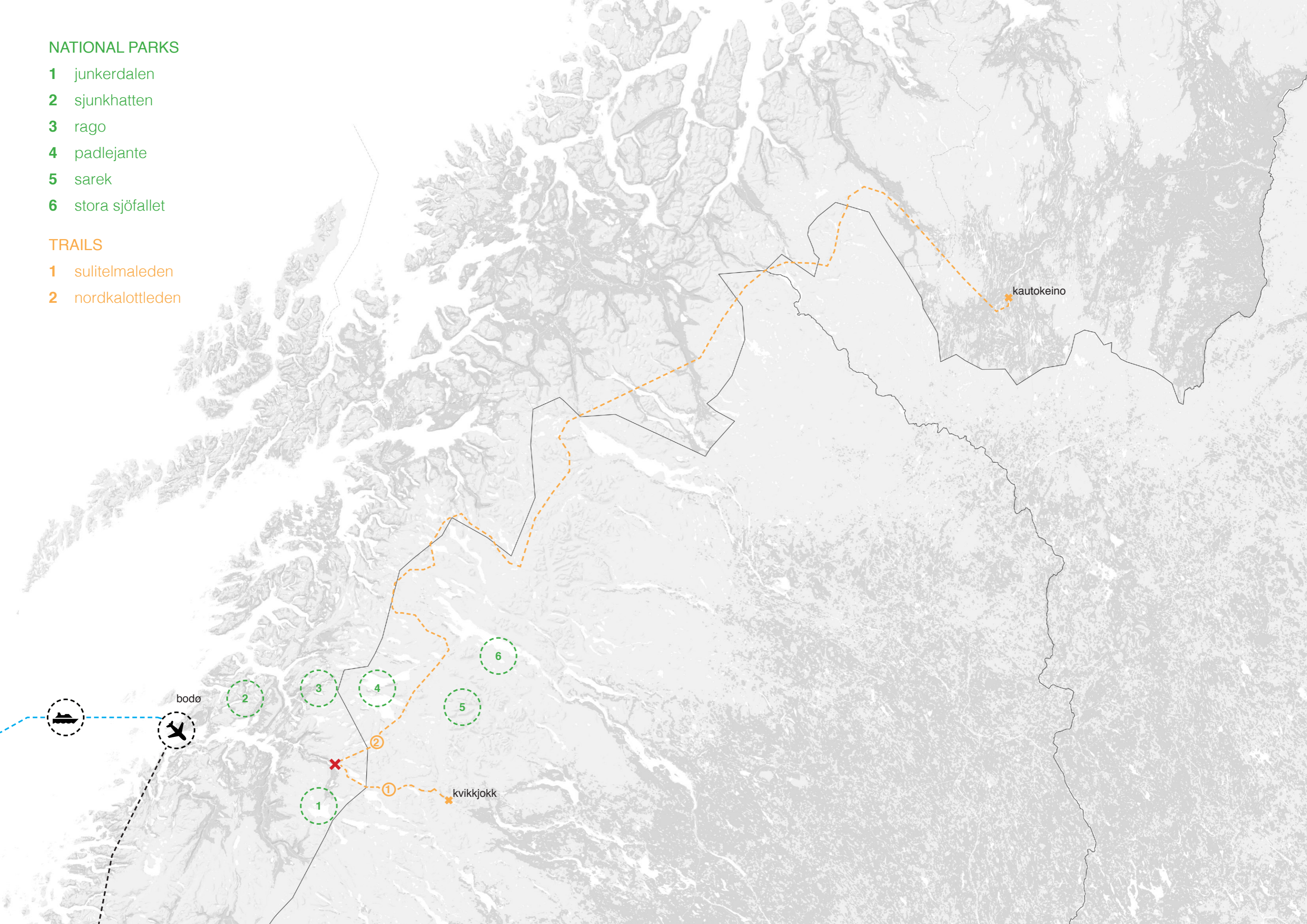


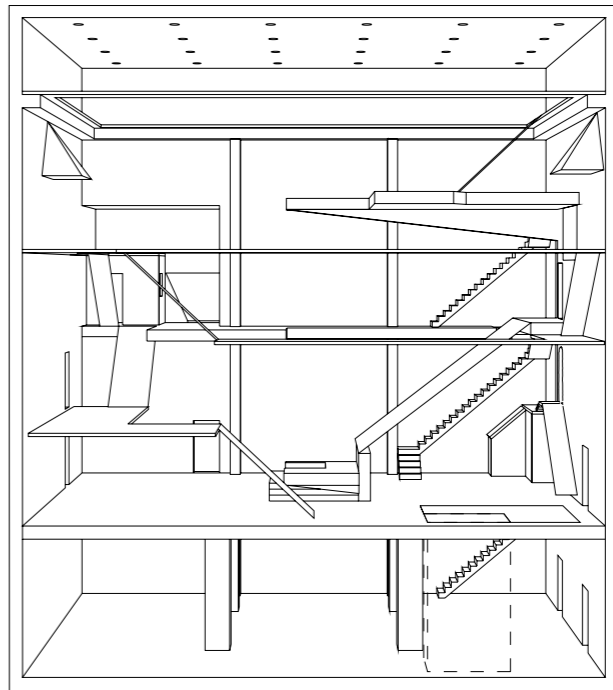
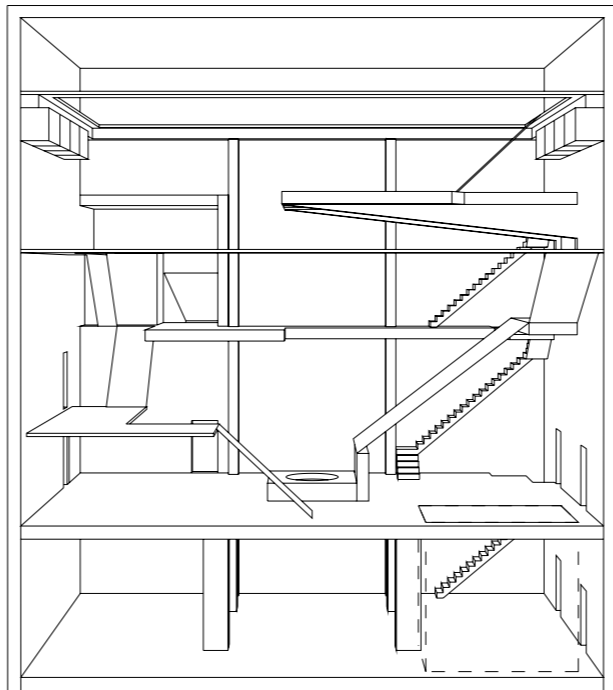
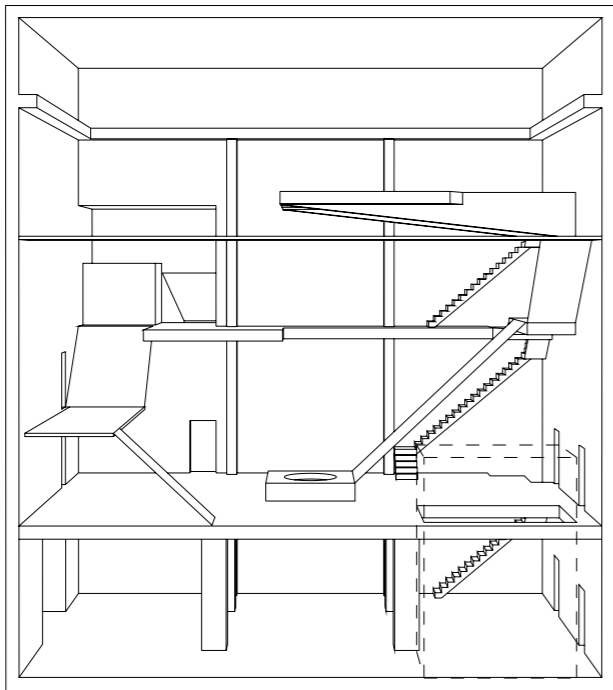
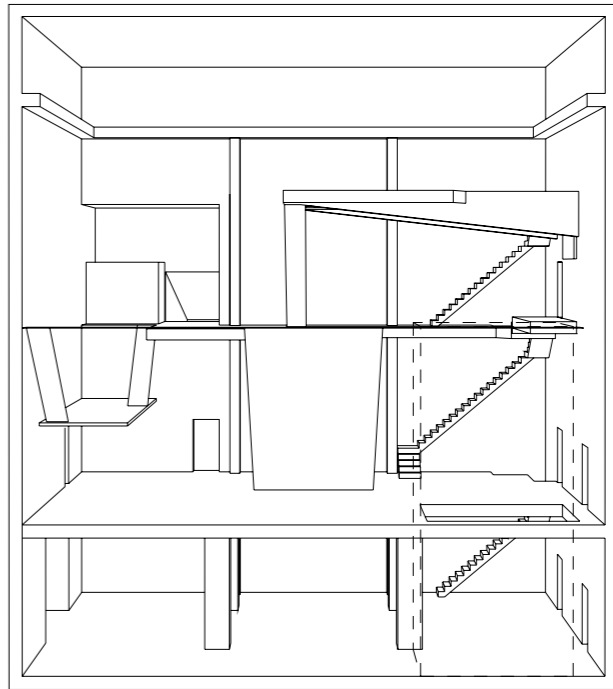
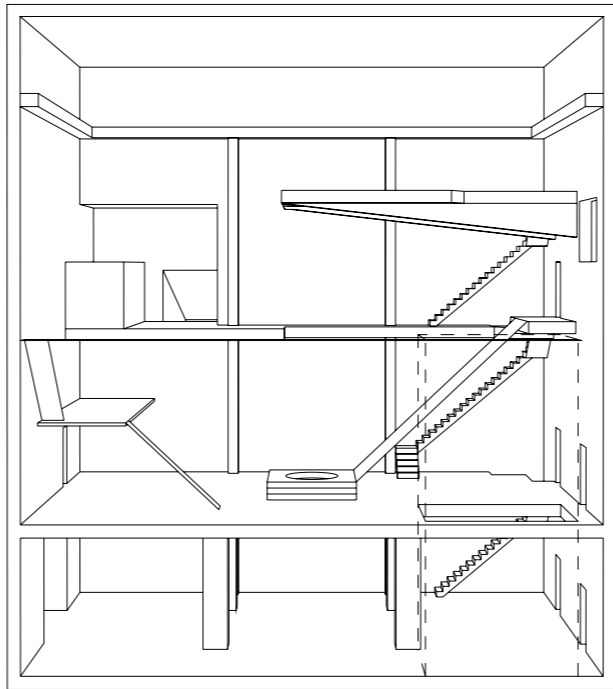
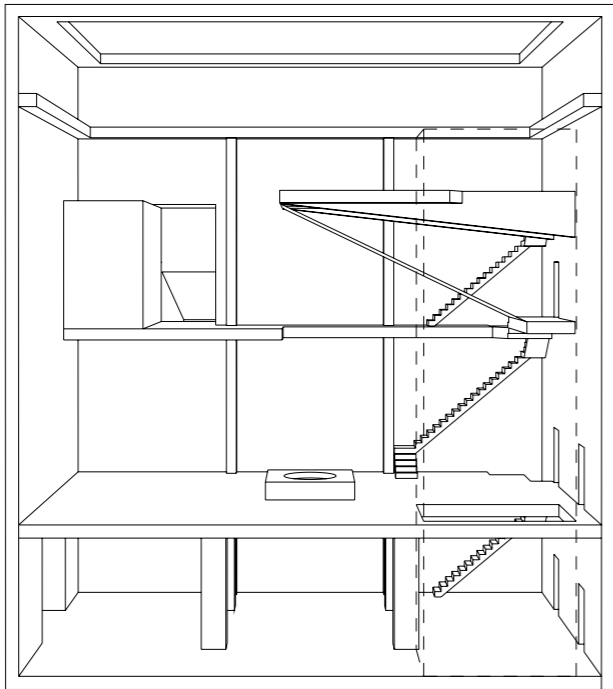
NATIONAL PARKS

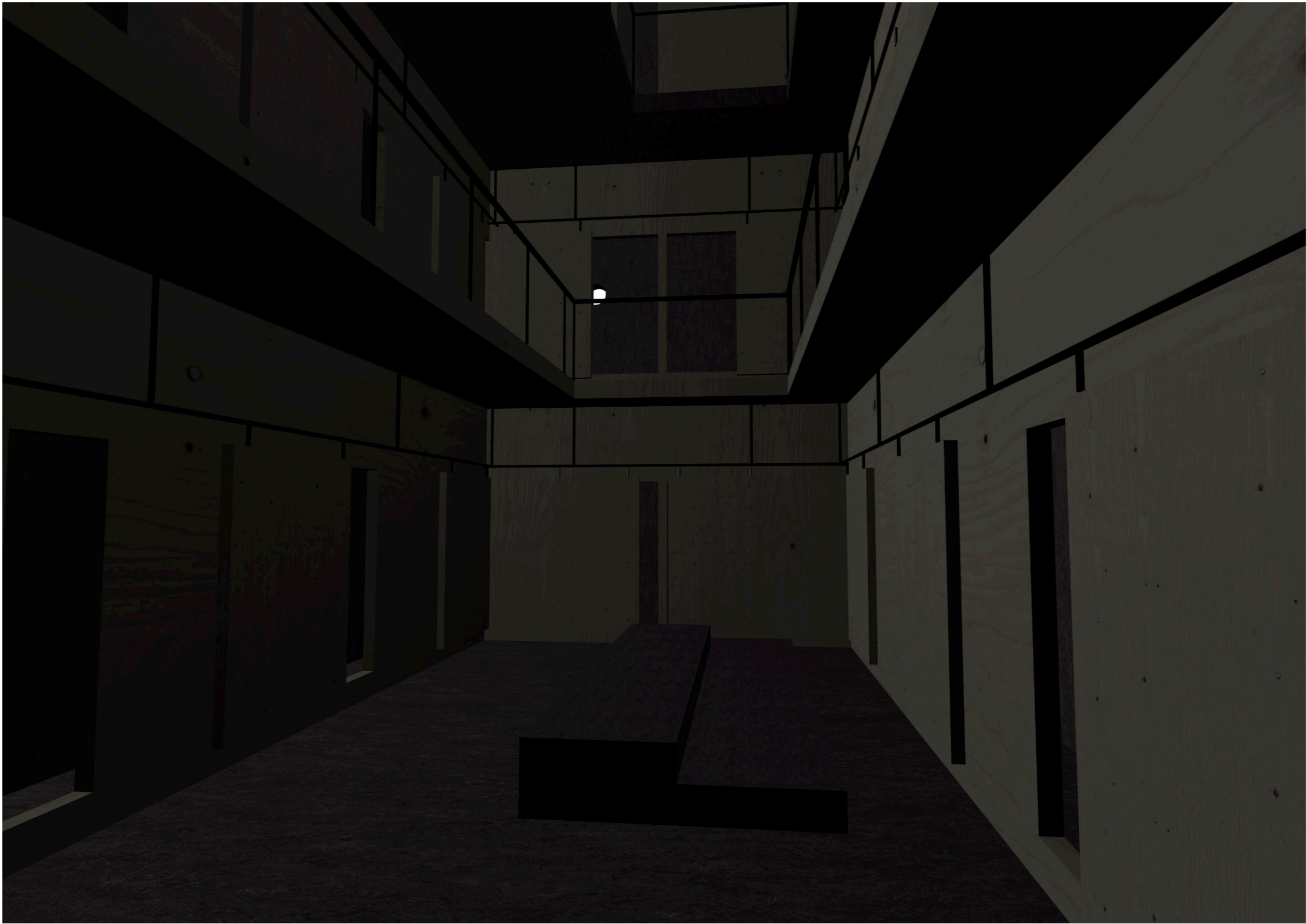
- 1 junkerdalen
- 2 sjunkhatten
- 3 rago
- 4 padlejante
- 5 sarek
- 6 stora sjöfallet

TRAILS

- 1 sulitelmaleden
- 2 nordkalottleden









35E
Eneret
H. Helgesen





ARBEIDSLEDIGHETEN
REGJERINGENS ANSVAR

KORREKT
LØN OG BETINGELSER
BILLES

ELE
FOR
STIFTET

KORREKT
TIL SULLIS!

STILLIGE
ARBEID



