

Community Plaza in Storhaug

- Investigating a public space in a privatized context.





Storhaug



1947: Tear Down, Build New



Only parts of the modernistic renewal was realized



EIGANES

CITY CENTER

STORHAUG

VÅLAND

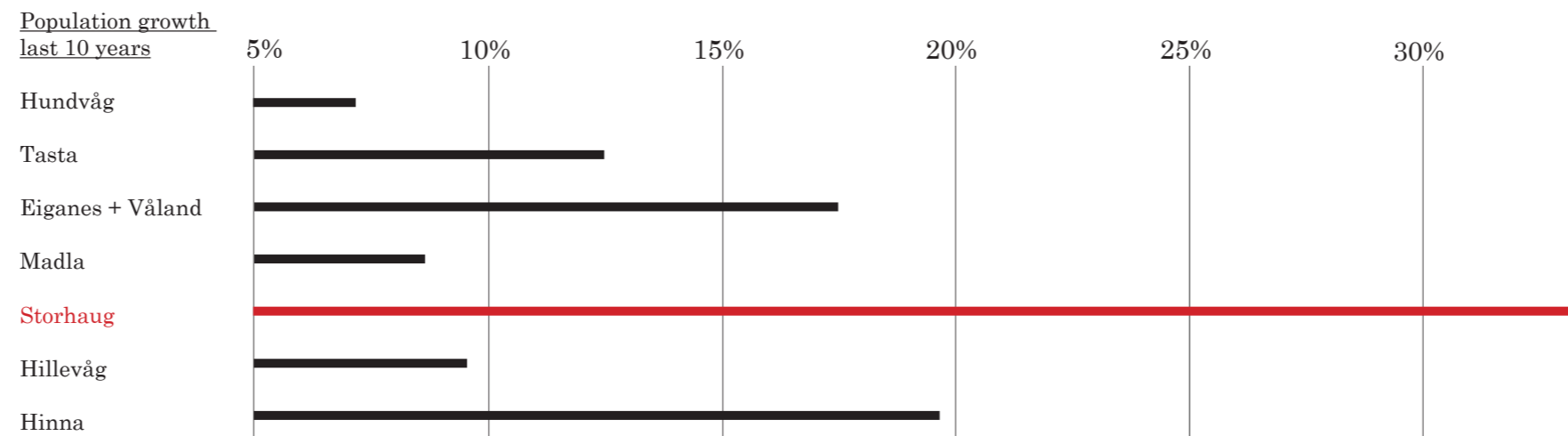
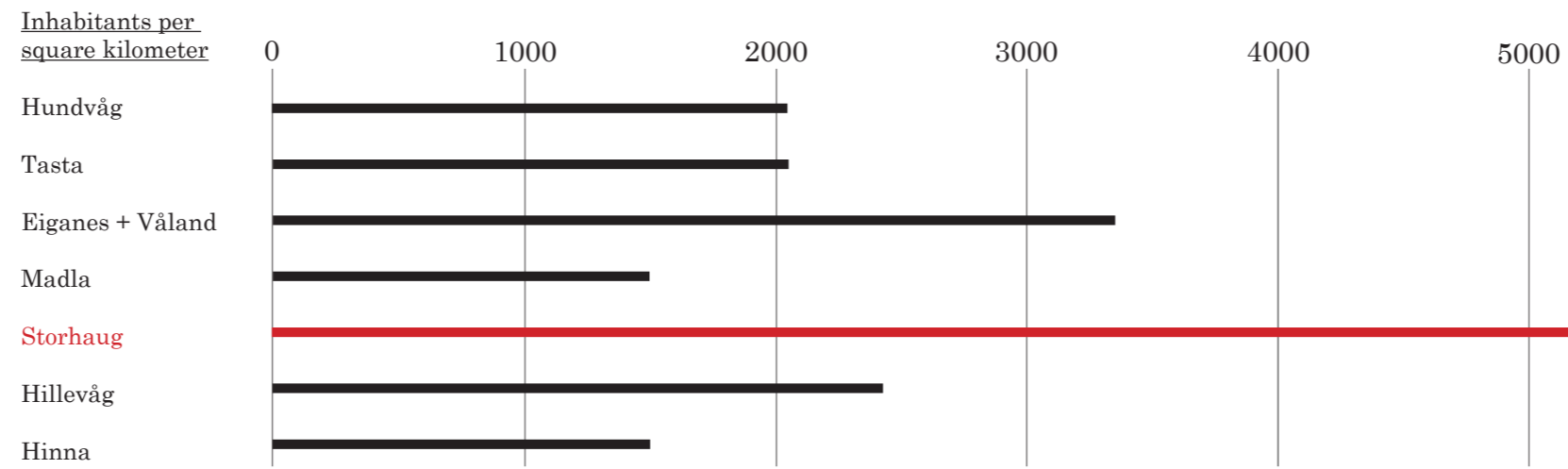


EIGANES

CITY CENTER

VALAND

STORHAUG



45 % of the housing are 1 or 2 room apartments

Bergeland is ranked third worst out of 73 zones in Stavanger

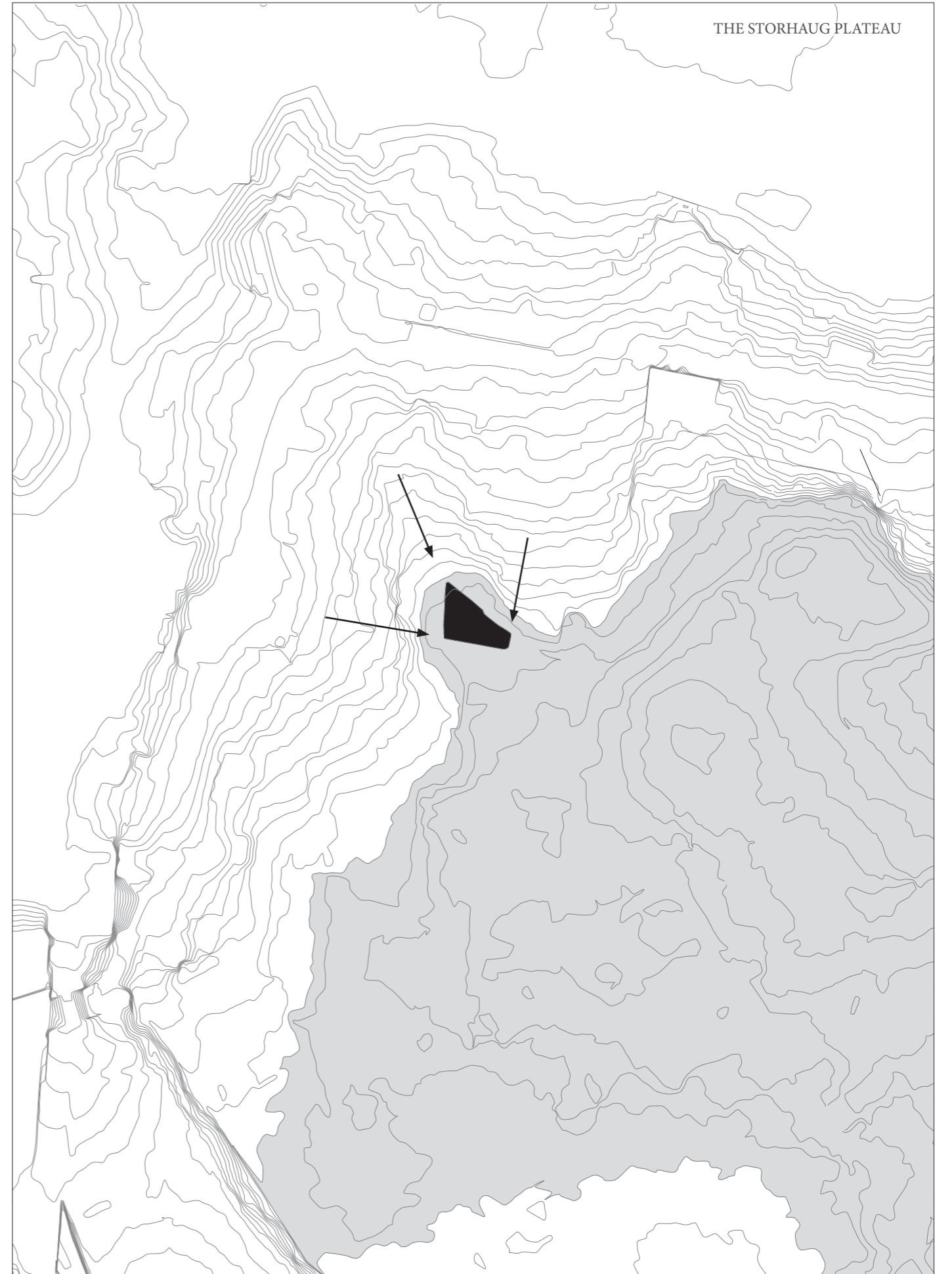


- SITE CRITERIA
- Low density
 - Poor condition
 - Not a part of the grid plan
 - Not a historical typology
 - Central location
 - Privatized today

NORMAL ROUTE TO CITY CENTER FROM STORHAUG

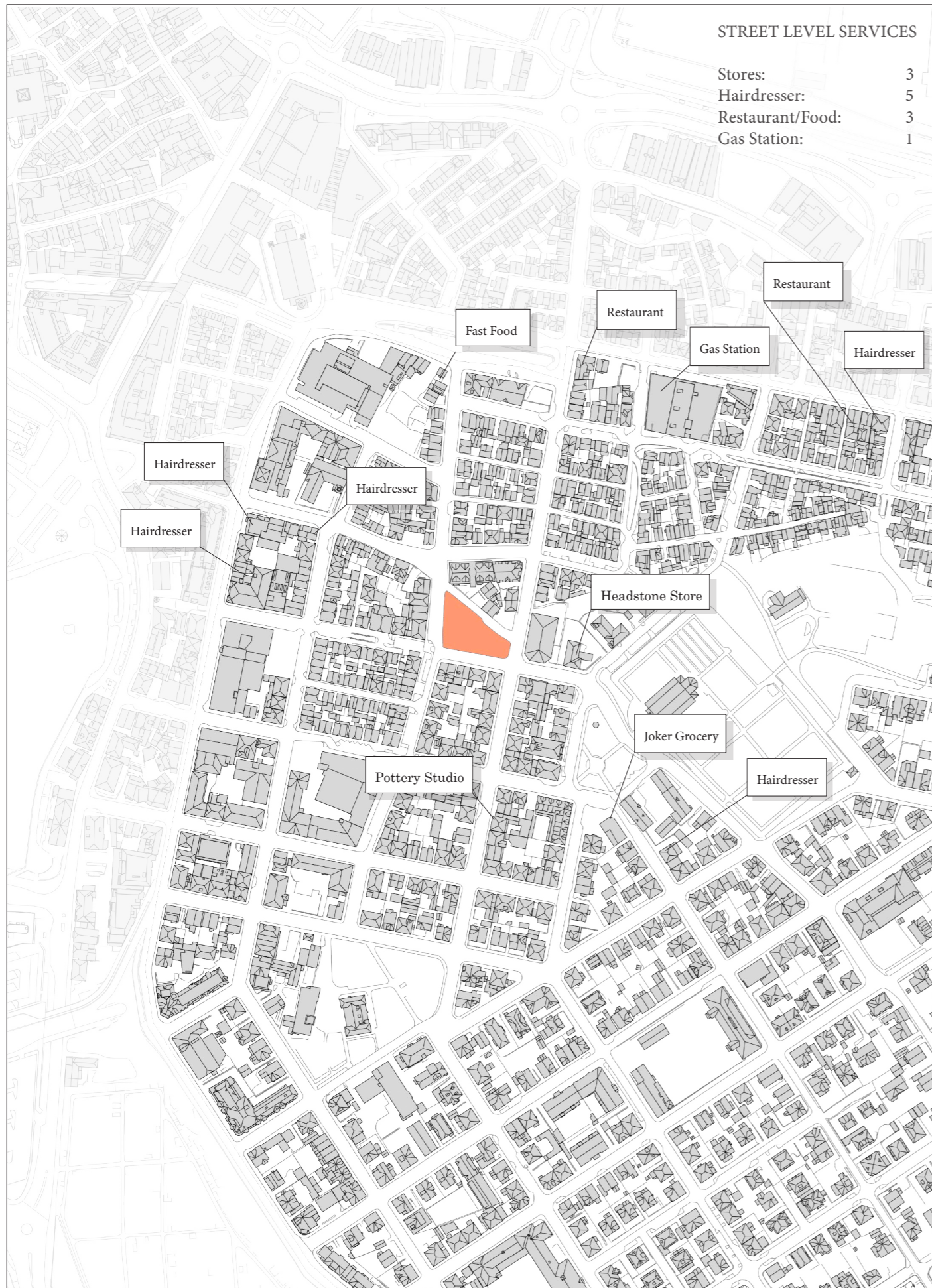


THE STORHAUG PLATEAU

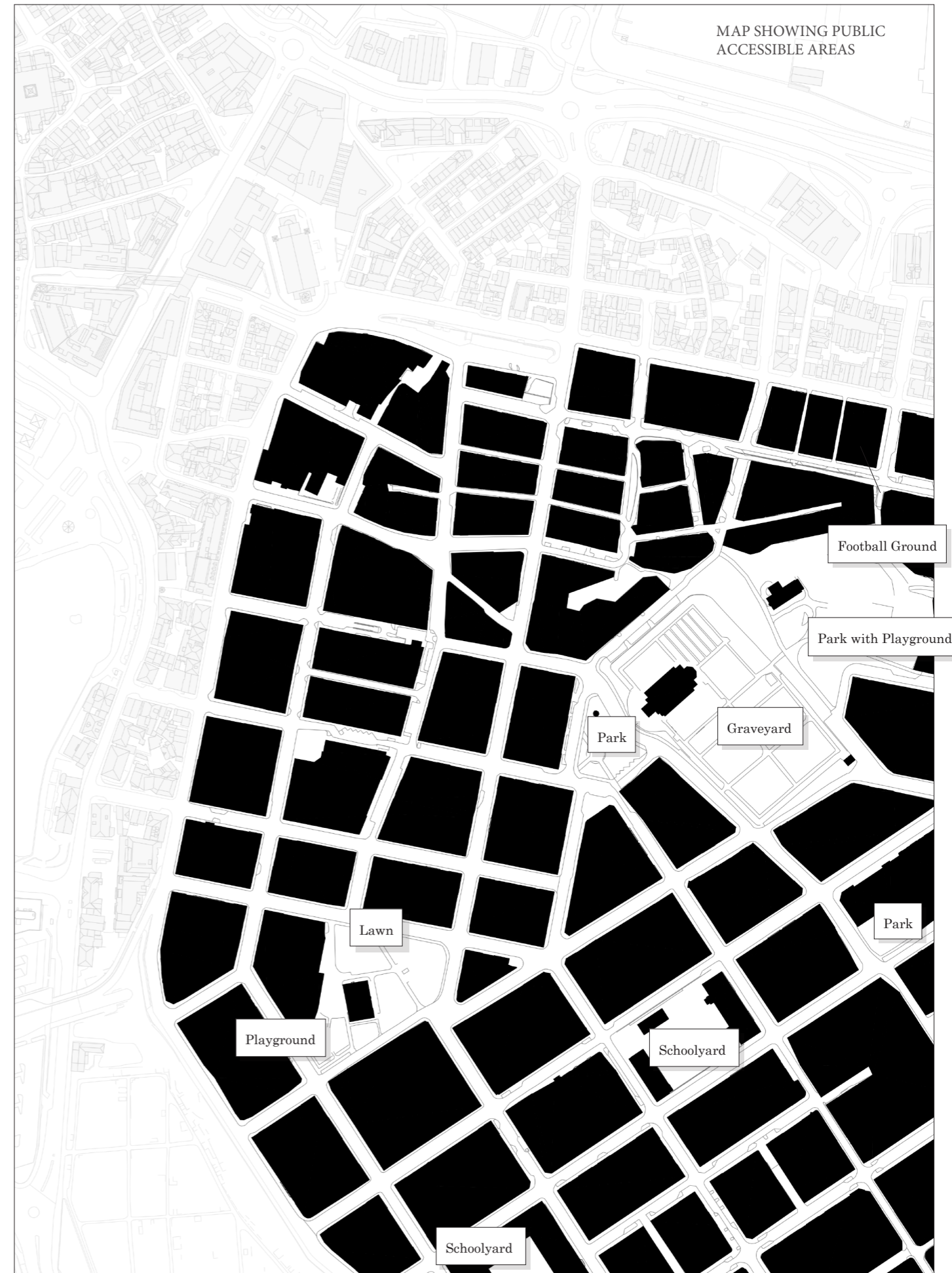


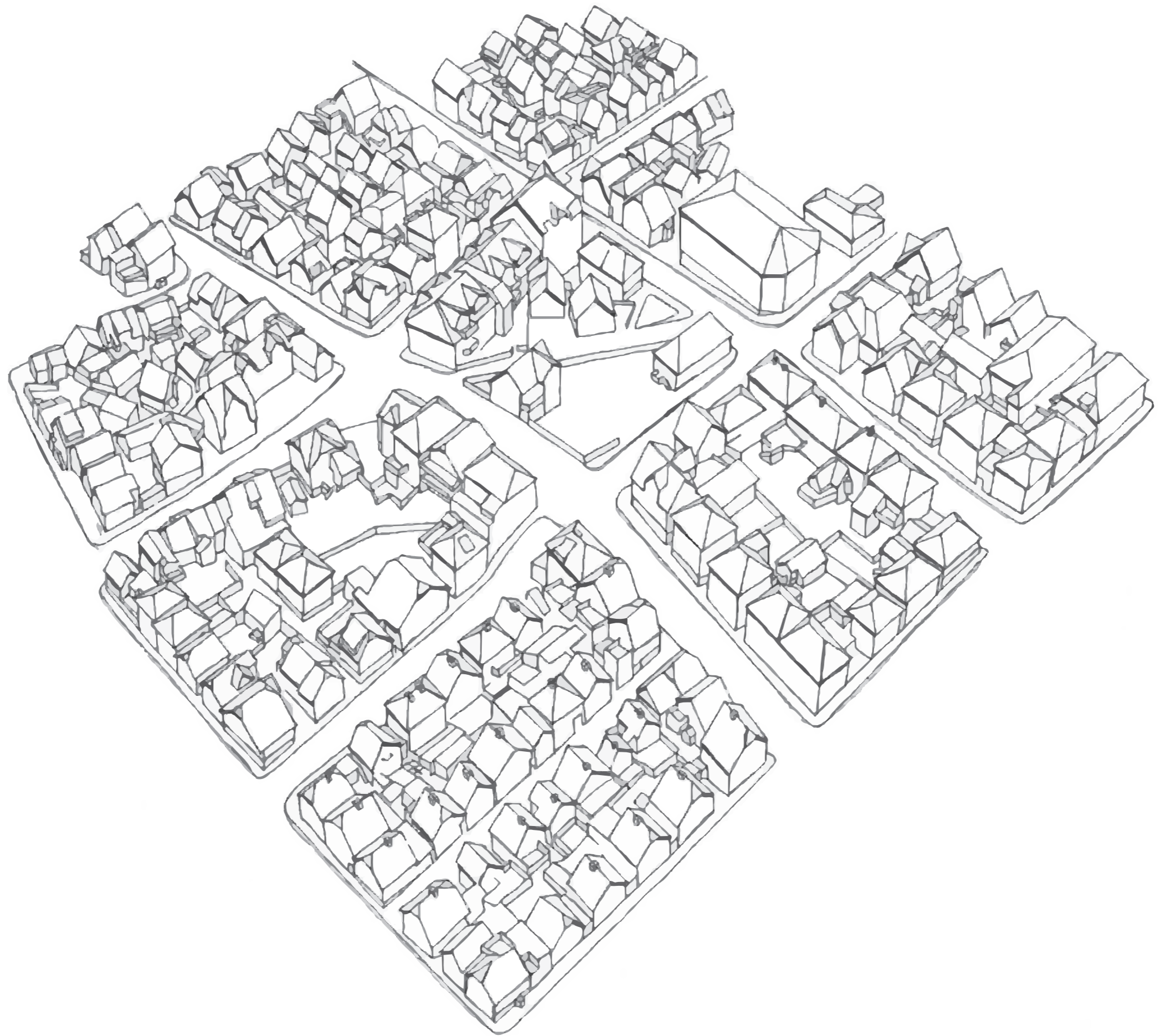
STREET LEVEL SERVICES

| | |
|------------------|---|
| Stores: | 3 |
| Hairdresser: | 5 |
| Restaurant/Food: | 3 |
| Gas Station: | 1 |



MAP SHOWING PUBLIC ACCESSIBLE AREAS



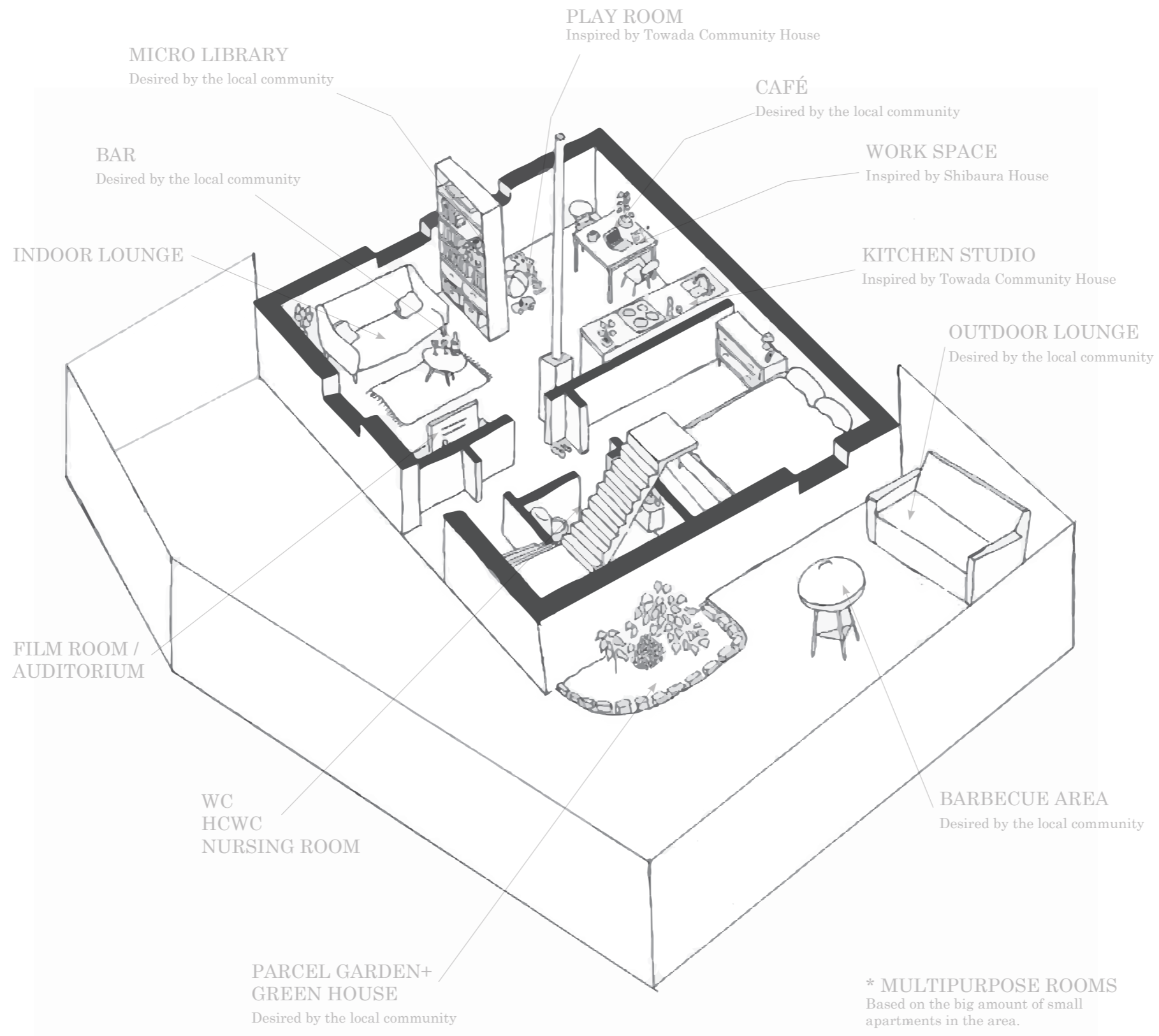




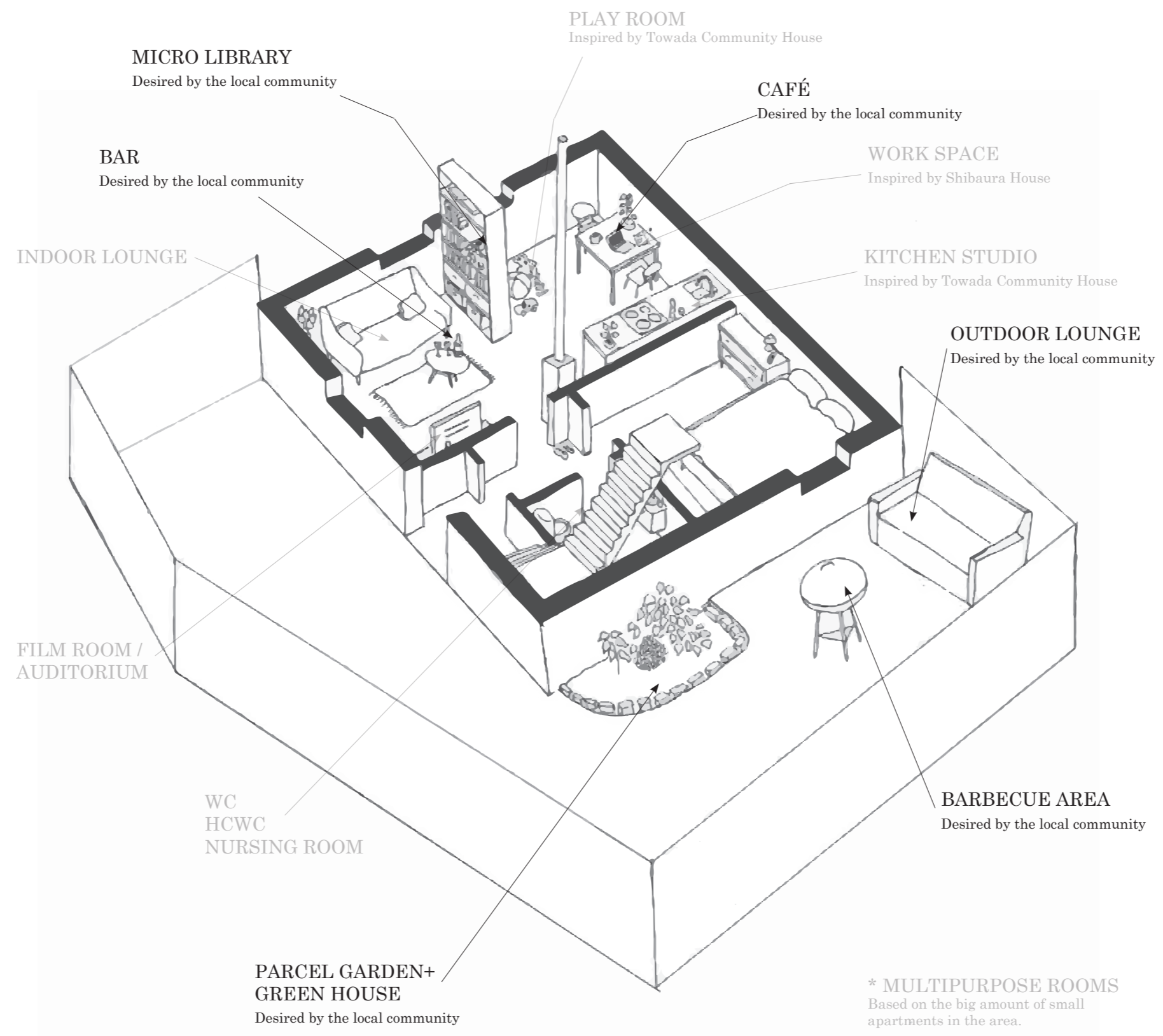
PRIVATGATA 9

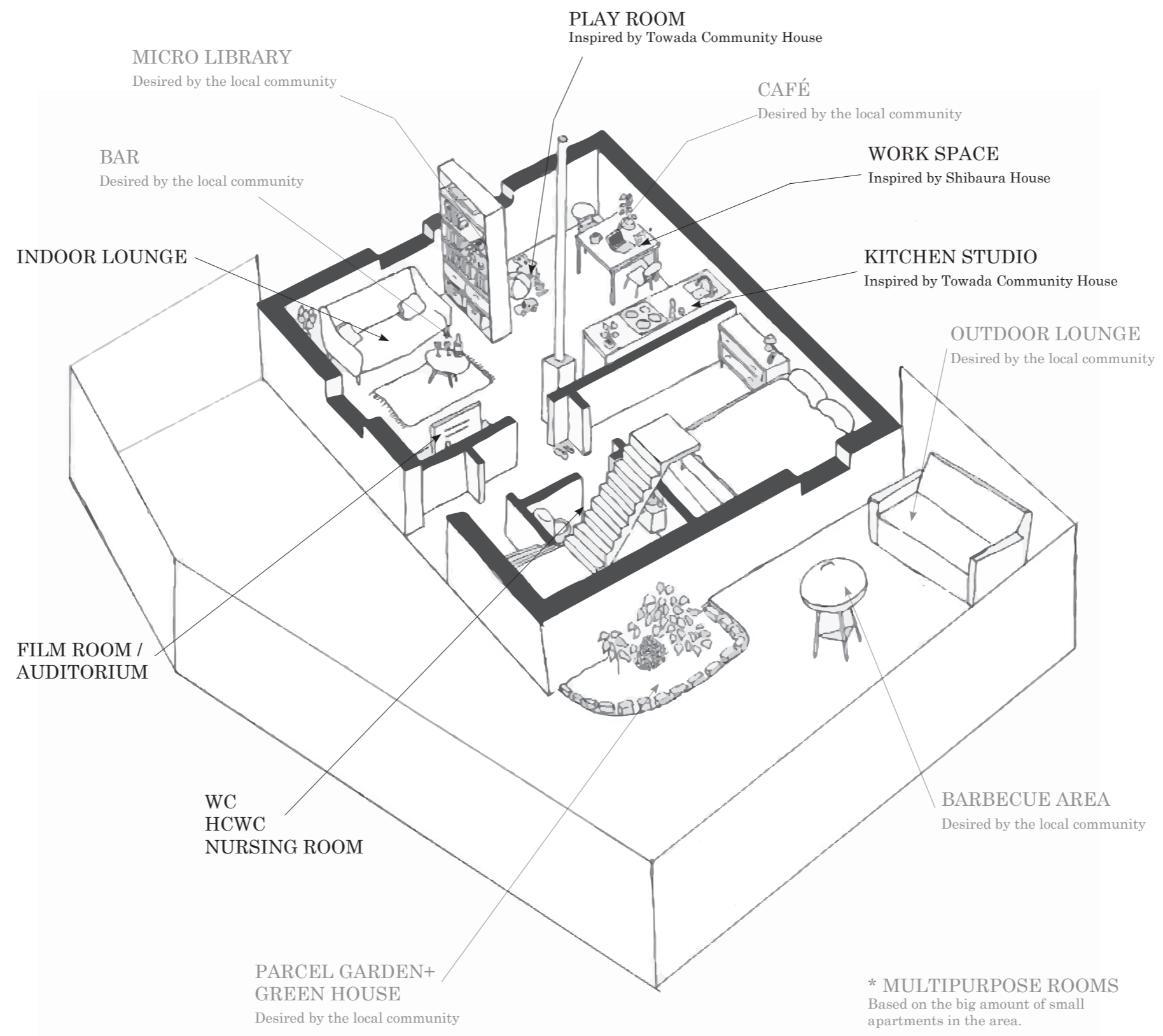




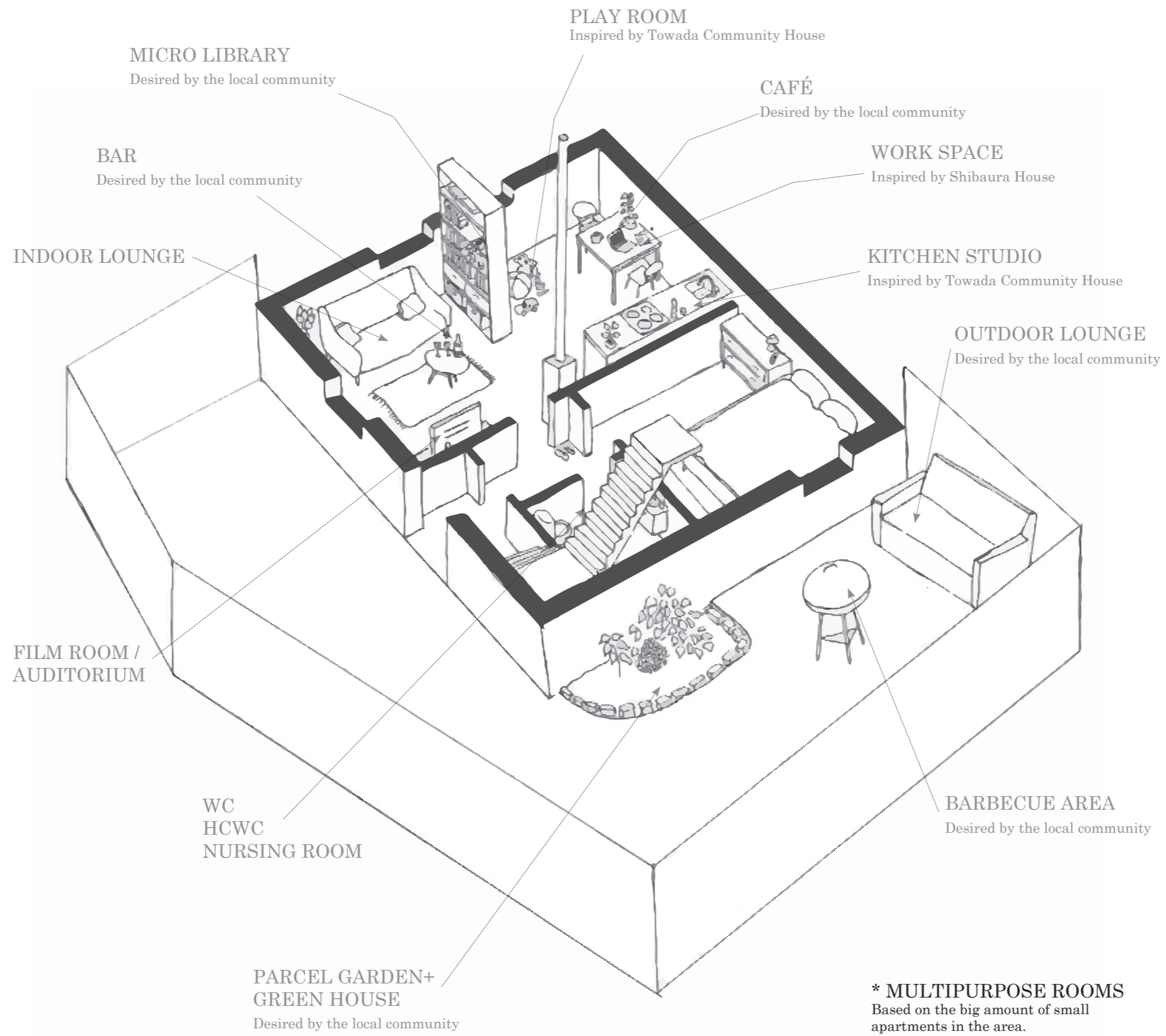


Rooms for rent for different occasions

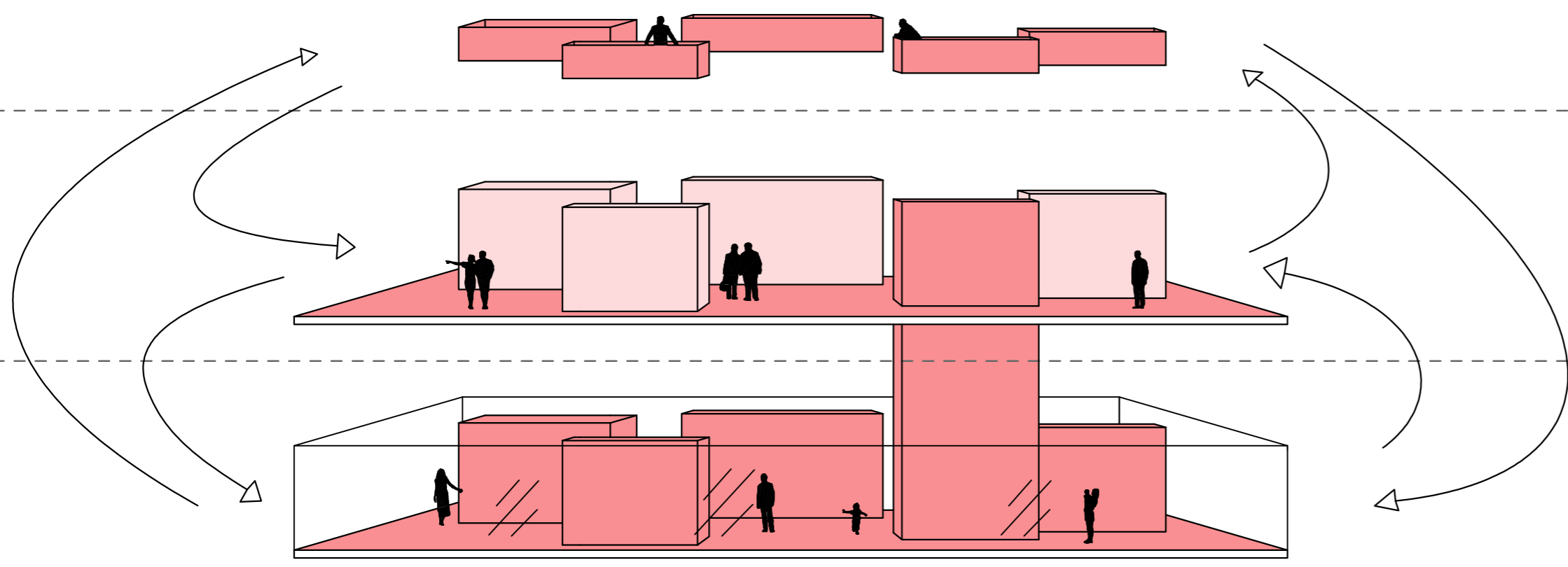




Rooms for rent for different occasions



Rooms for rent for different occasions



ROOFTOP
PUBLIC OUTDOORS

- BARBECUE ZONE
- OUTDOOR LOUNGE
- PARCEL GARDENS
- VIEWS

1st FLOOR
SEMI PRIVATE INDOORS
+ PUBLIC OUTDOORS

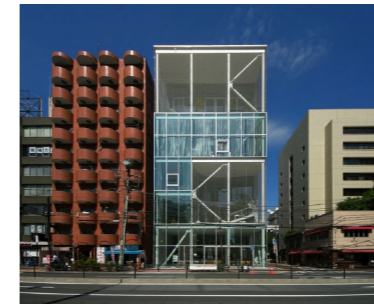
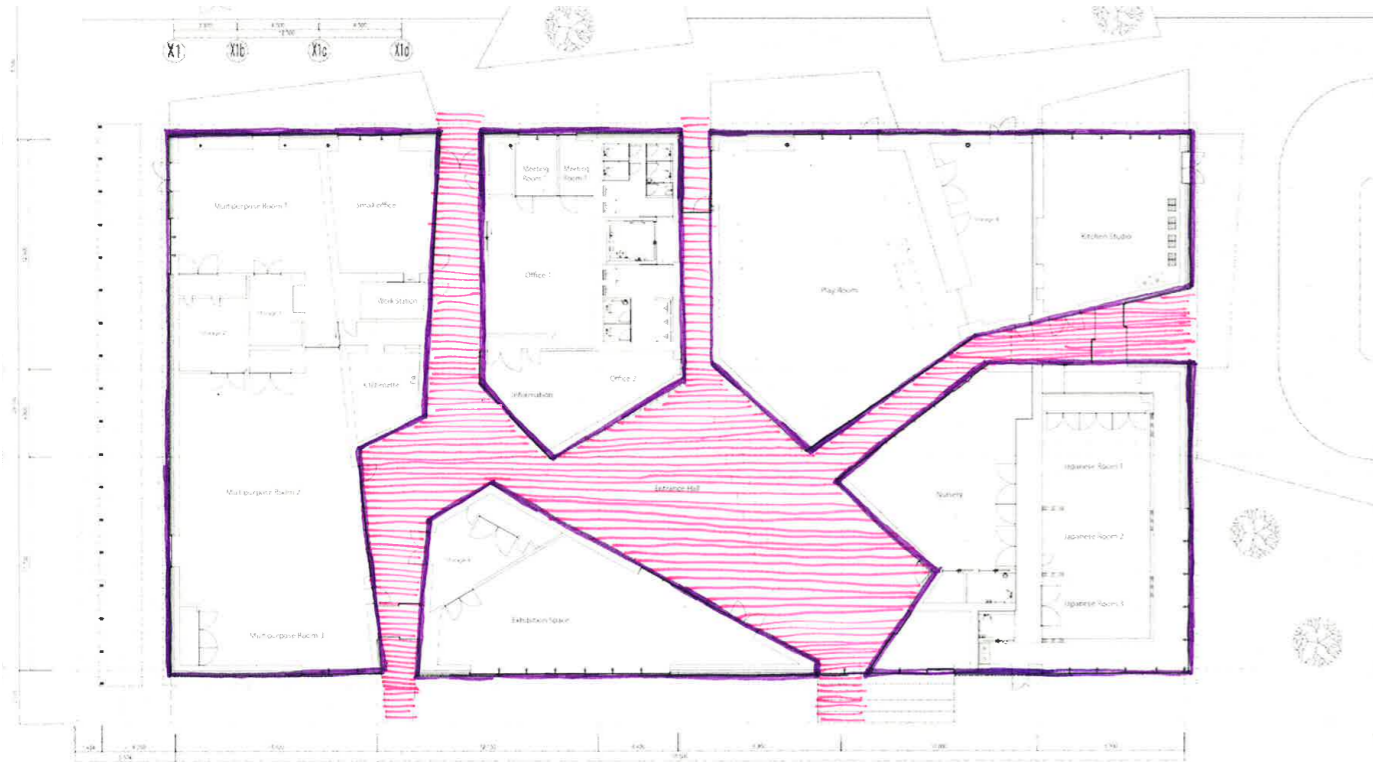
- MULTIPURPOSE ROOMS
- OUTDOOR PLAZA
- CAFÉ SECOND STORY

GROUND FLOOR
PUBLIC INDOORS

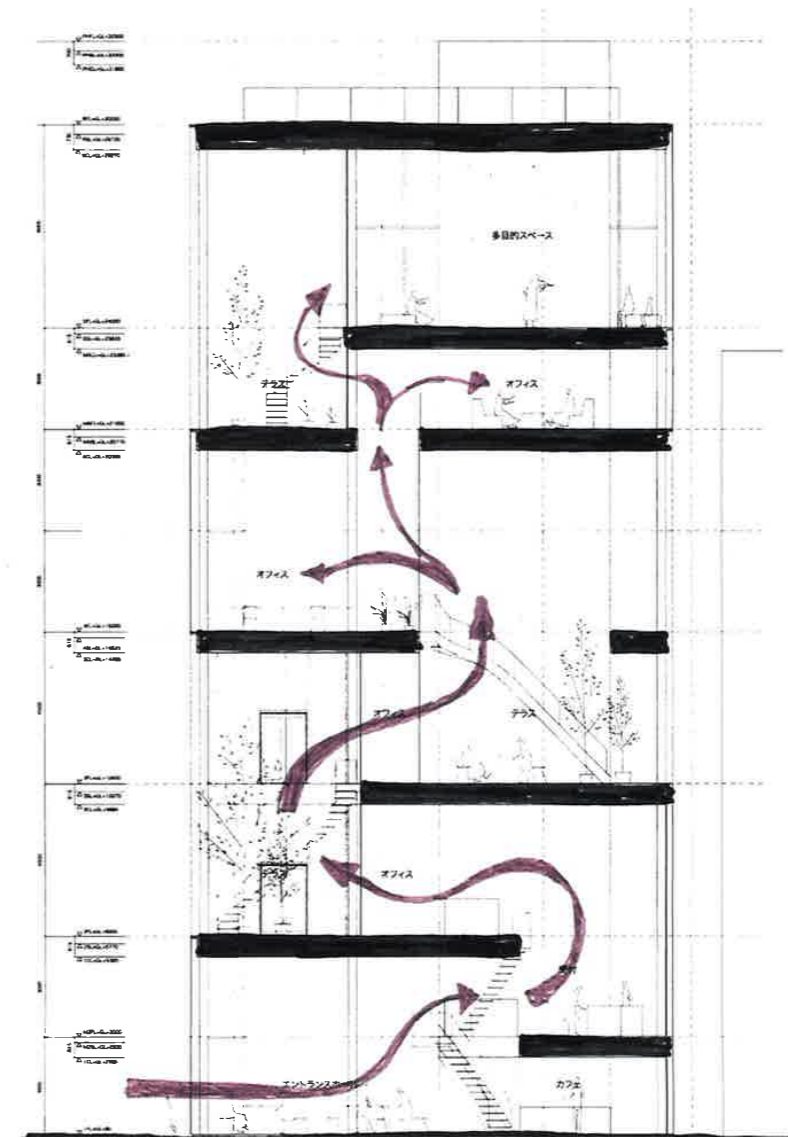
- KITCHEN STUDIO
- WORK STATION
- CAFÉ
- PLAY ROOM
- MICRO LIBRARY
- BAR
- INDOOR LOUNGE
- FILM ROOM/ AUDITORIUM

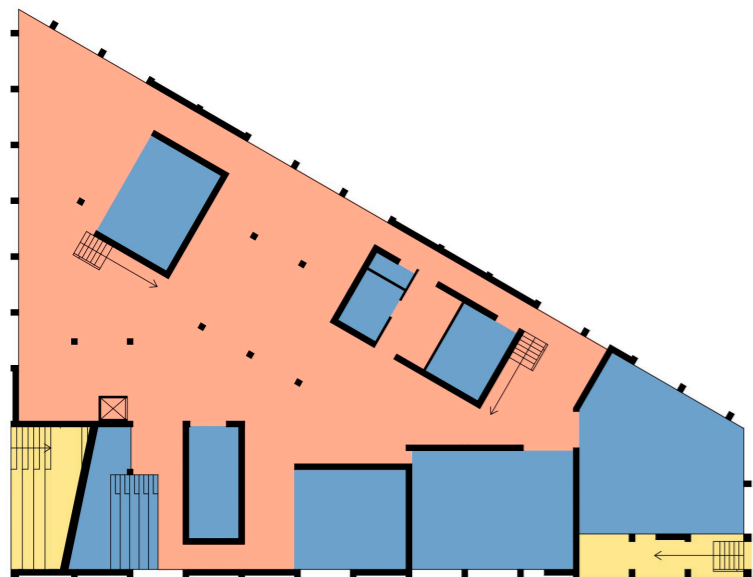


Towada Community Plaza



Shibaura House

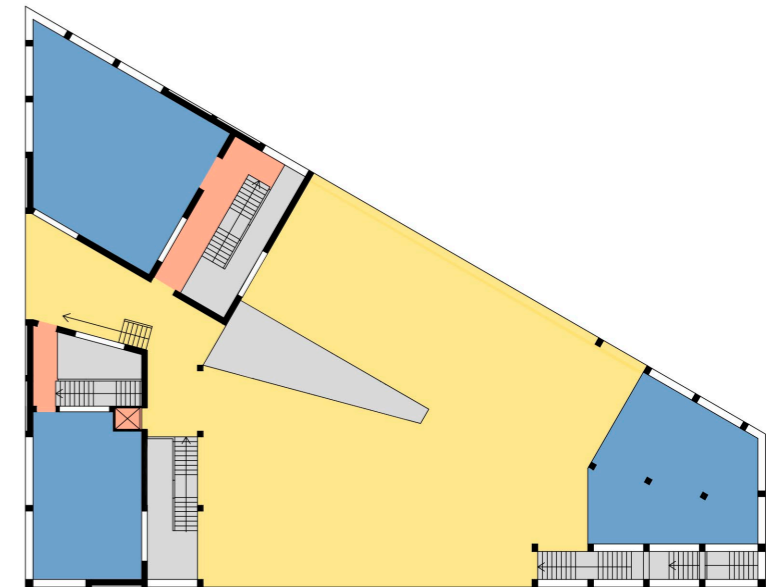




GROUND FLOOR

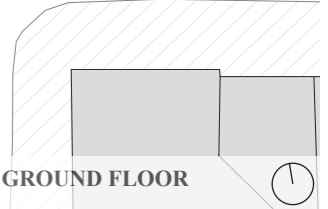
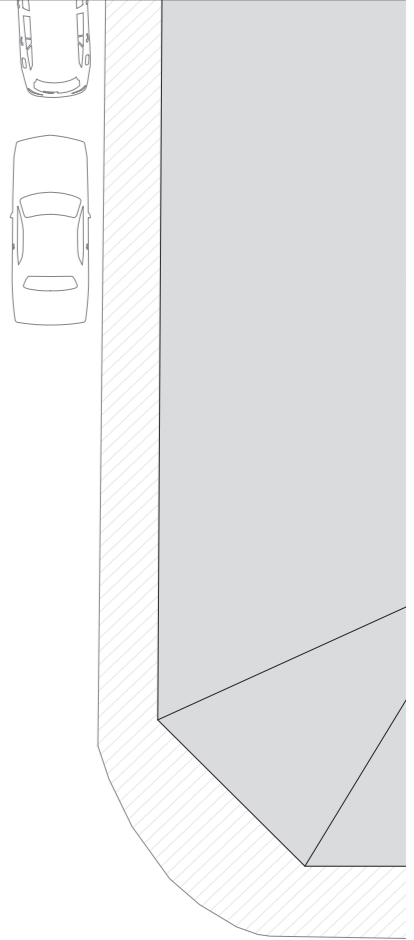
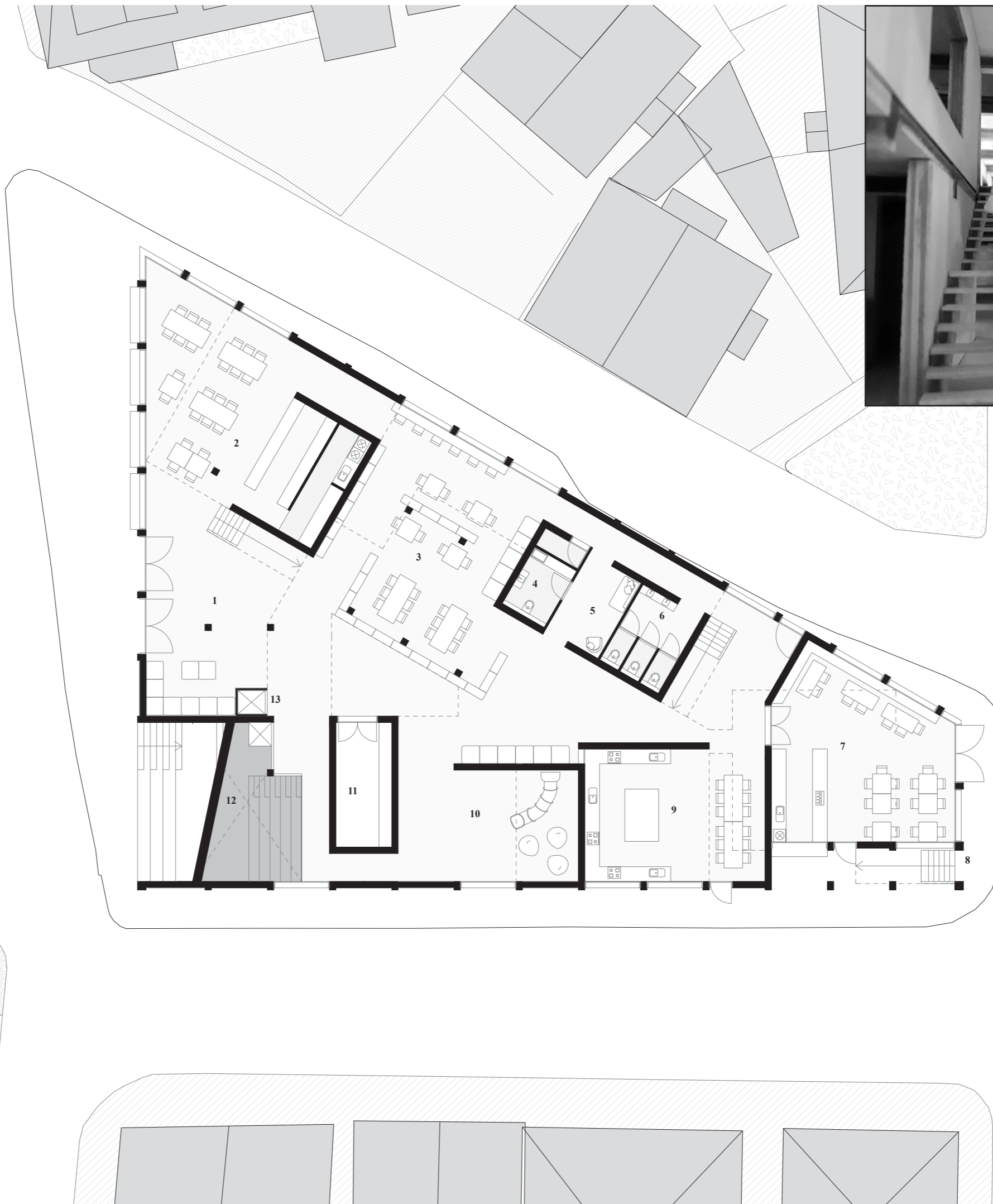
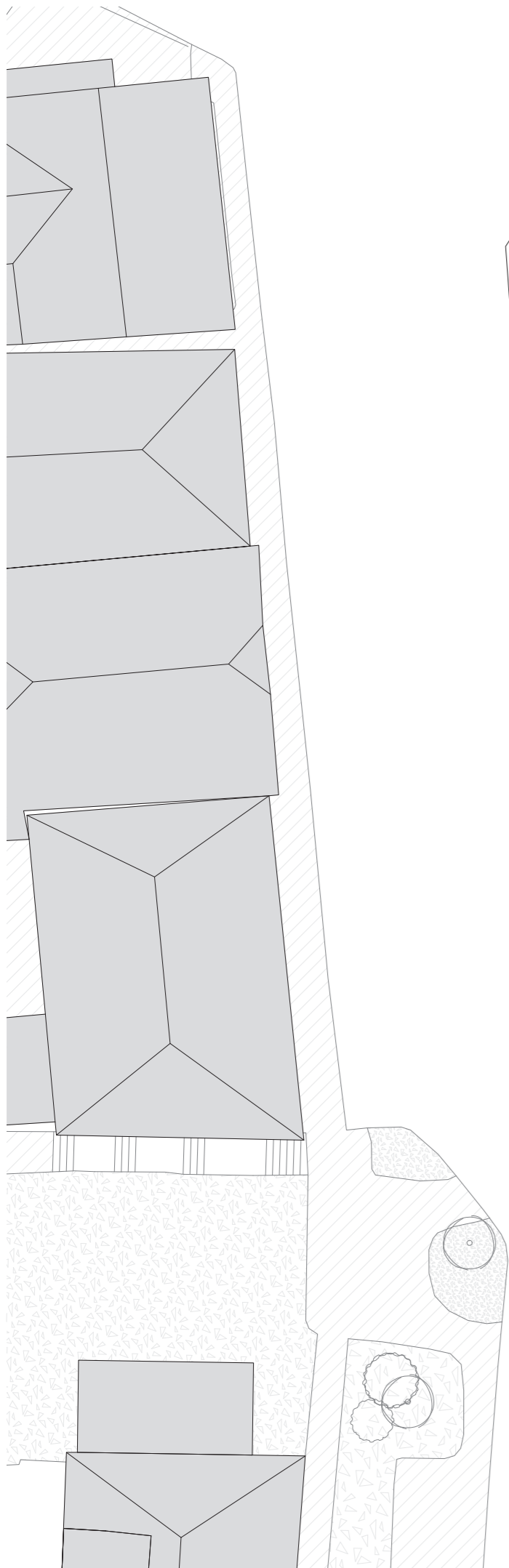


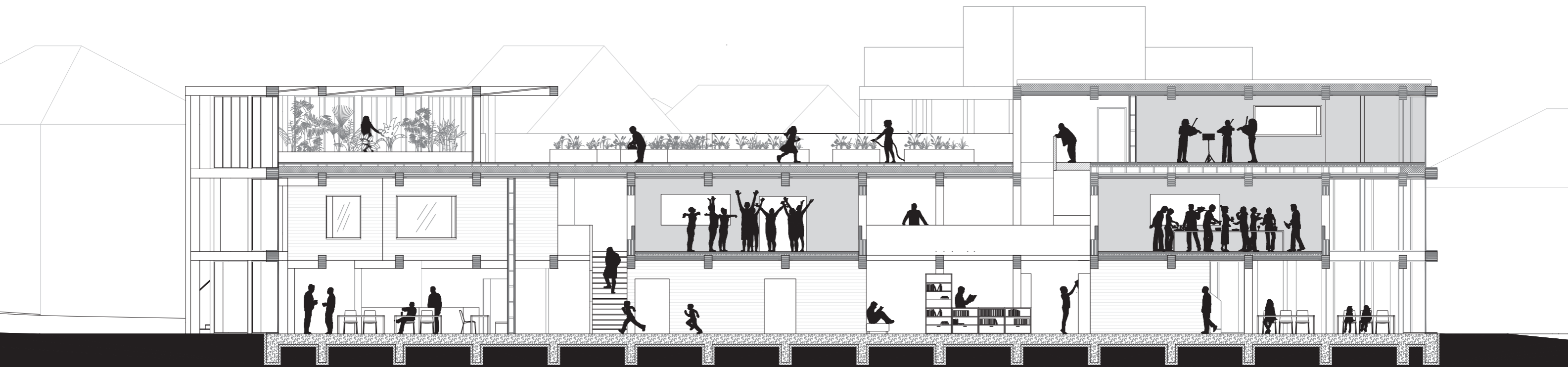
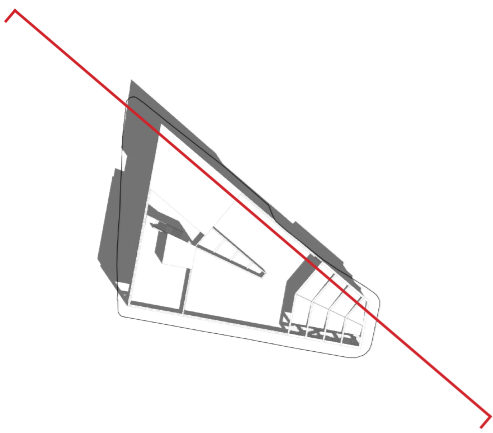
FIRST FLOOR



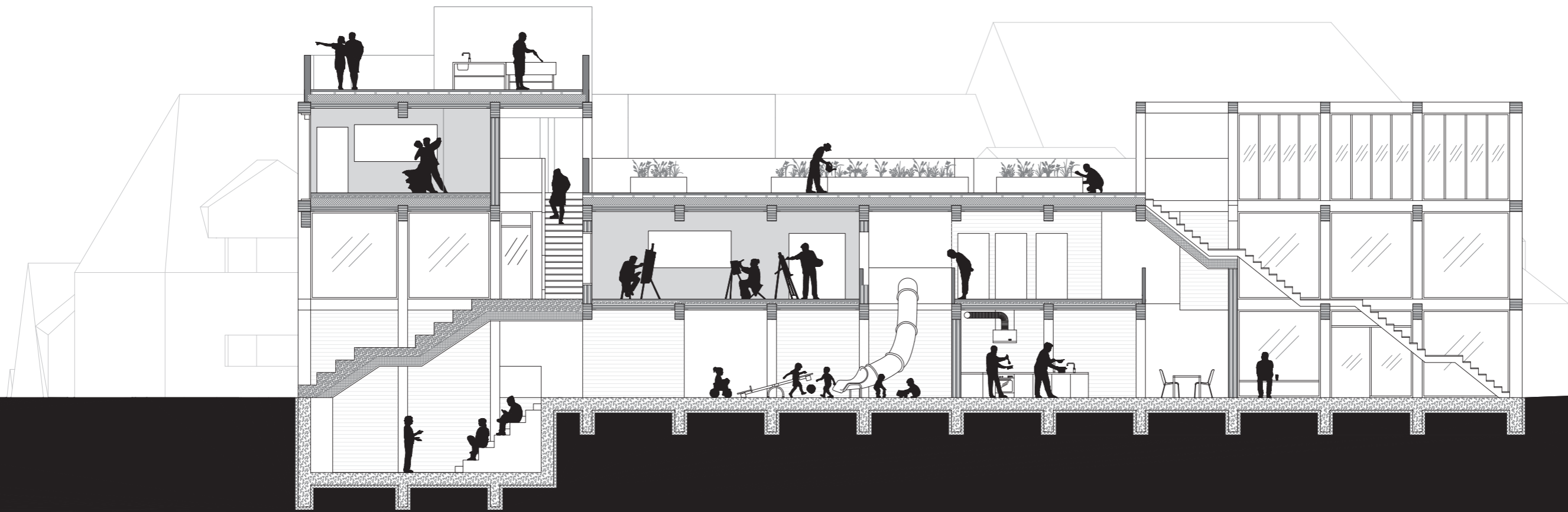
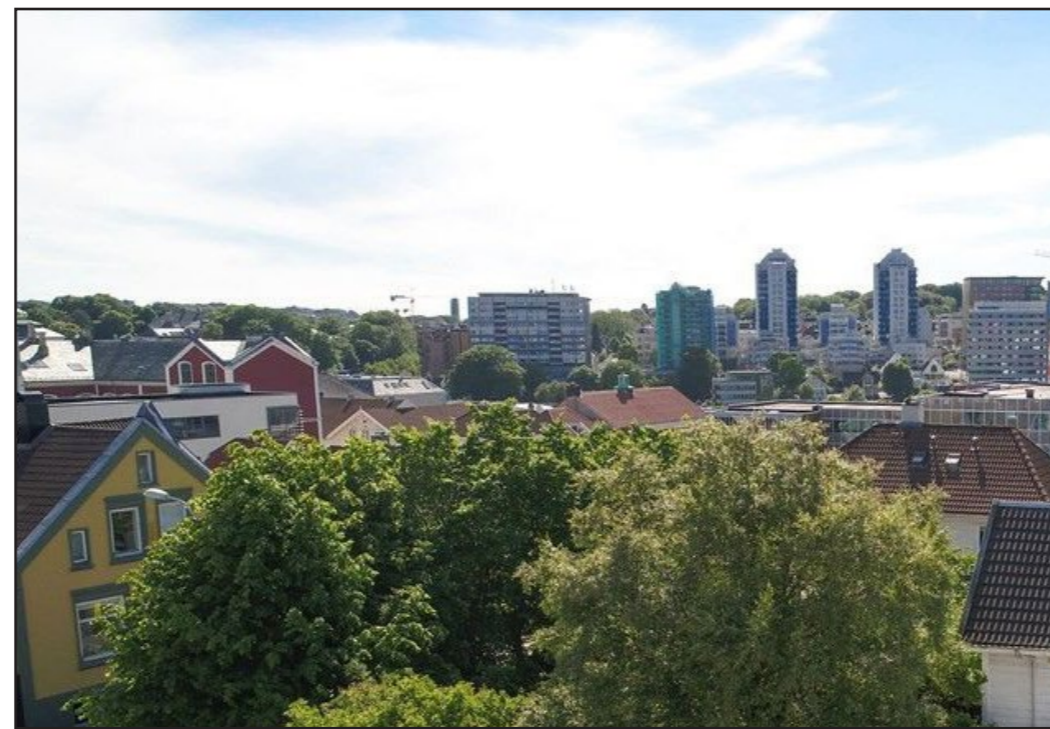
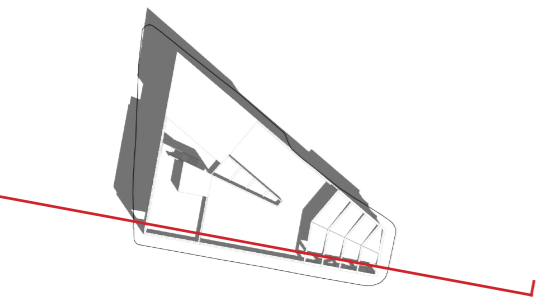
SECOND FLOOR/ROOF

- INDOOR CIRCULATION
- OUTDOOR CIRCULATION
- CLOSED ROOM/ DEFINED SPACE
- OPENING TO UNDERLYING FLOOR

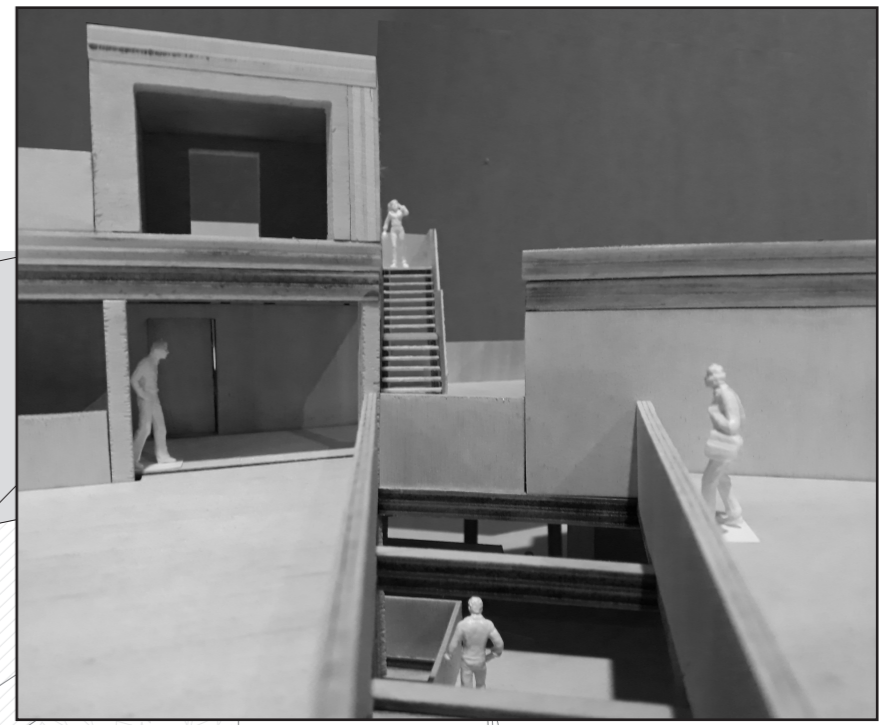
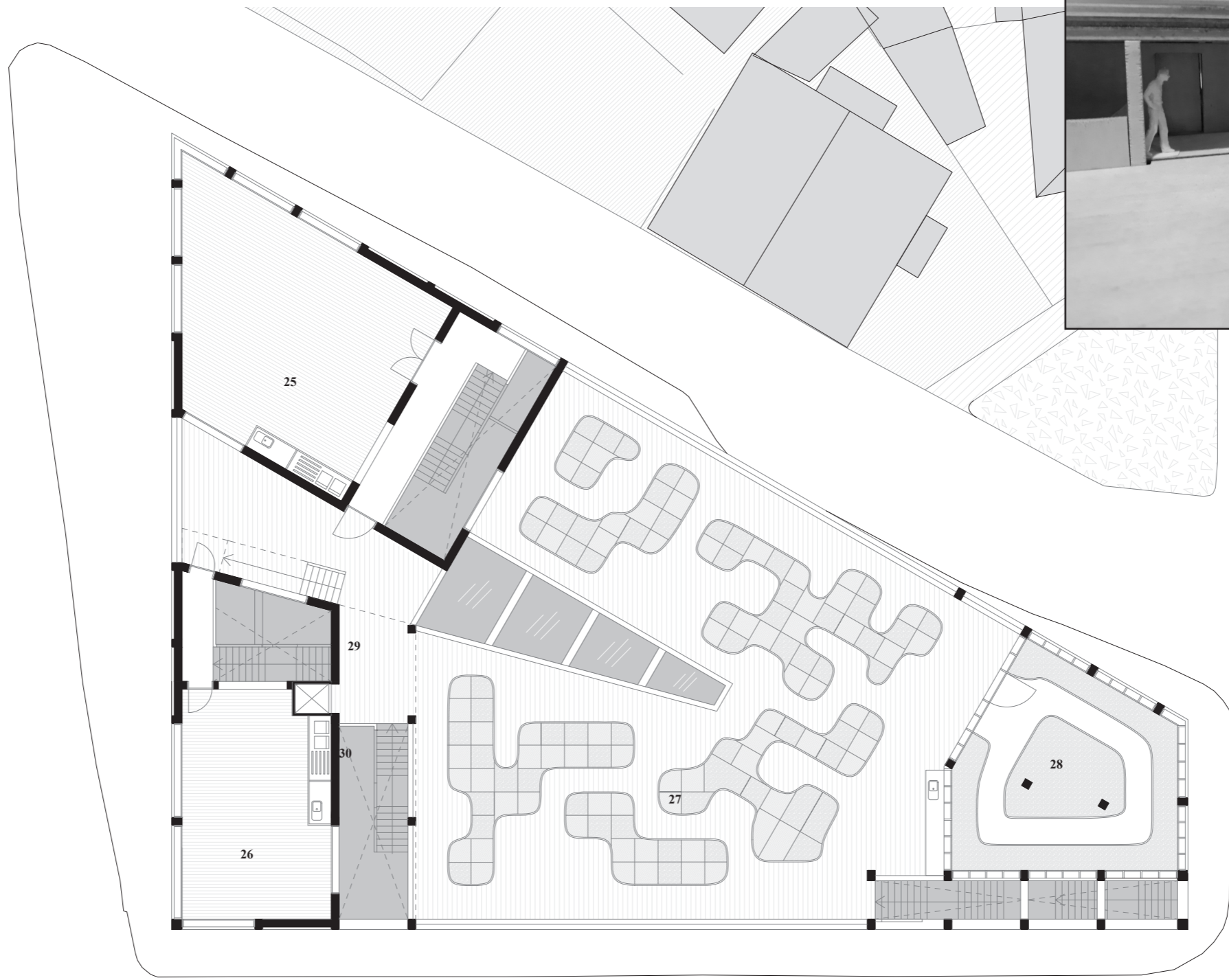
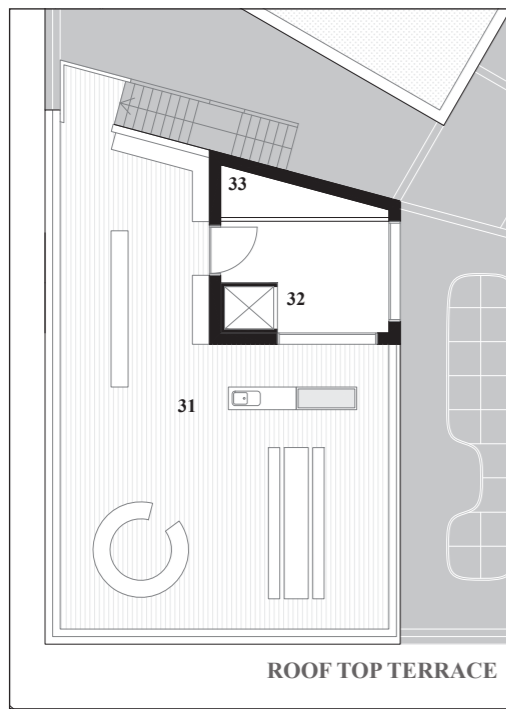








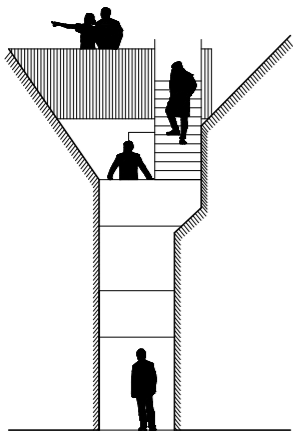
SECTION WEST-EAST



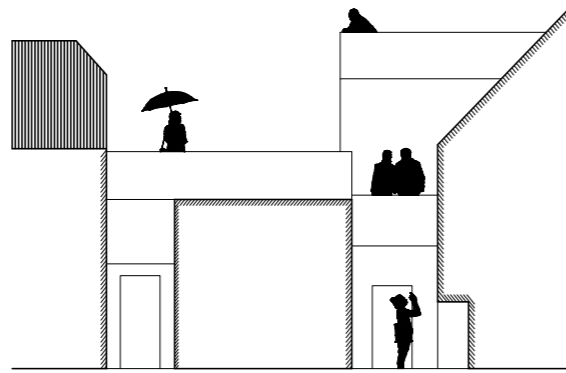
SECOND FLOOR / ROOF



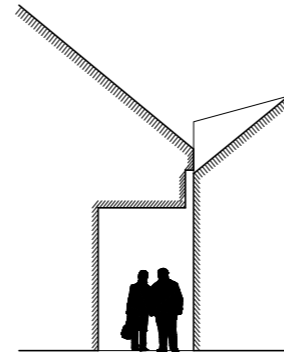




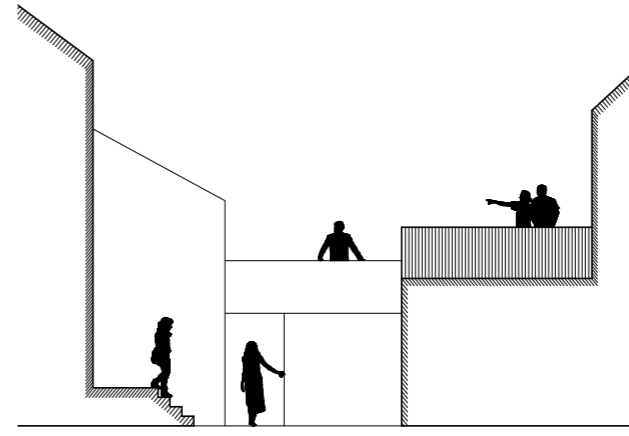
Nedre Dalgate 47-49



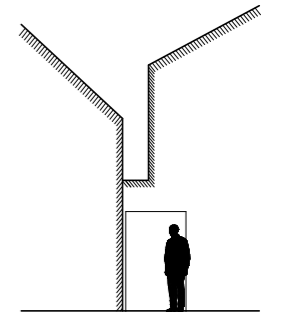
Hetlandsgata 38-40



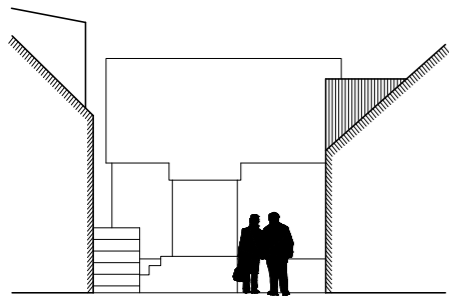
Brattegata 10-12



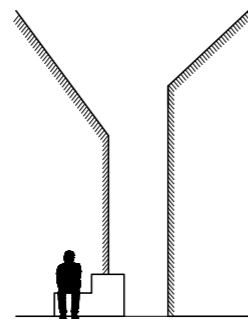
Lysefjordgata 11-13



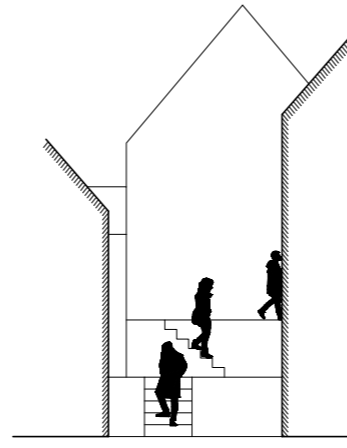
Nedre Dalgate 58-60



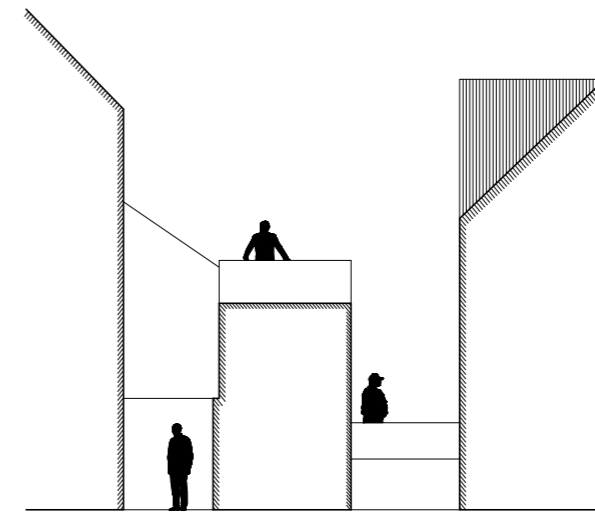
Risbakken 3-5



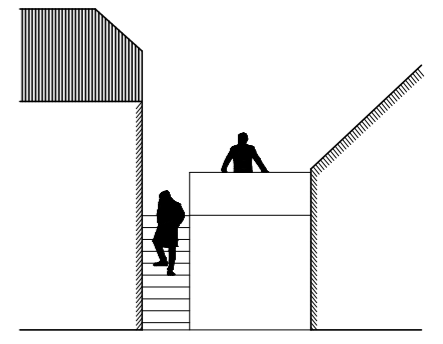
Midtre Dalgate 14-16



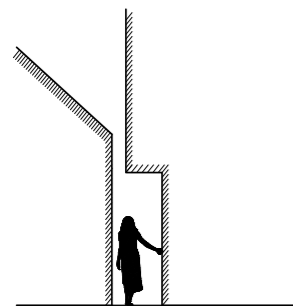
Mellomgata 3-5



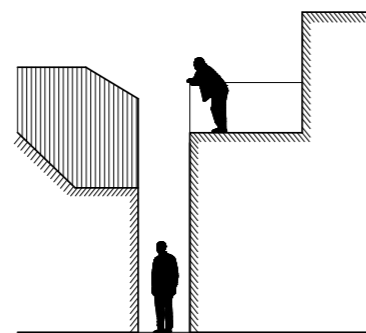
Skolegata 25-27



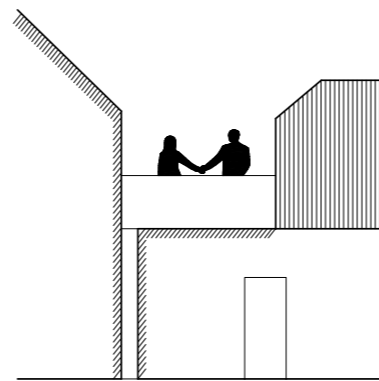
Hetlandsgata 26-28



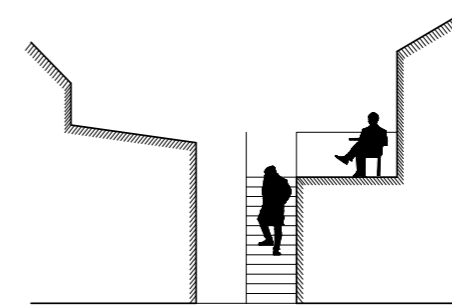
Langgata 44-46



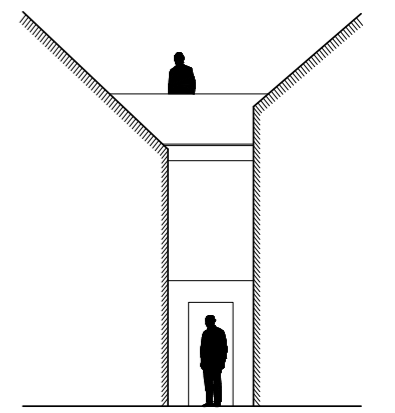
Langgata 26-28



Kirkebakken 13-15



St.Hansgate 11-13



Nedre Dalgate 33-35

