

The building has six stories and four facades facing different conditions. Each floor has four apartments which center around one stairwell and two light wells. The apartments range from 180-190 m<sup>2</sup> and are organized with distribution spaces surrounded by an enfilade of generous rooms.

There are many things to be taken into consideration when designing an urban apartment building. In the beginning of the process the aim for *one idea* was something I after some time realized was not what I wanted. The thought of one idea quickly evolved into something forced. Instead I embraced the thought of making a project with several notes to play on in the different scales of the building where the sum of it all would result in a building showing my values as an architect.

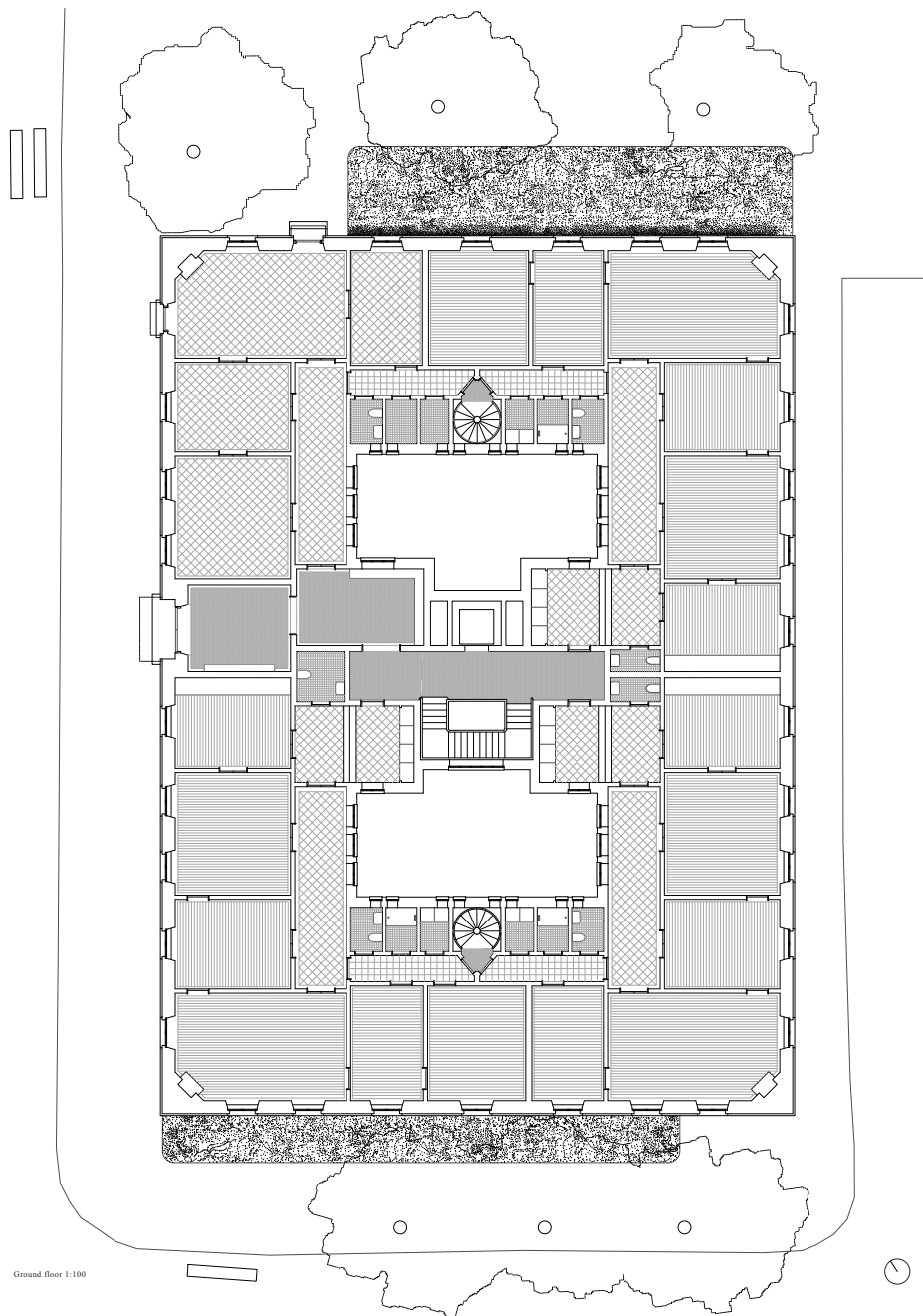
The plan and the façade and their relation has been my interest and tools throughout the process. It has come to my realization that it is not about announcing one of them to be the protagonist of the project but rather focus on their interaction and how to treat them as a twosome. The plan and the façade rely on each other; the plan gives the structure and the way of life inside the building, while the façade gives character and quality to the spaces of the structure.

The façade of the building is a wall with openings; with windows and balconies creating figurative moments on the façade. The imagery of the well-known objects provides a kind of comfort with its familiarity. The plan is a structure organized with distribution spaces surrounded by an enfilade of generous rooms. A robust plan with an ability to withstand time.

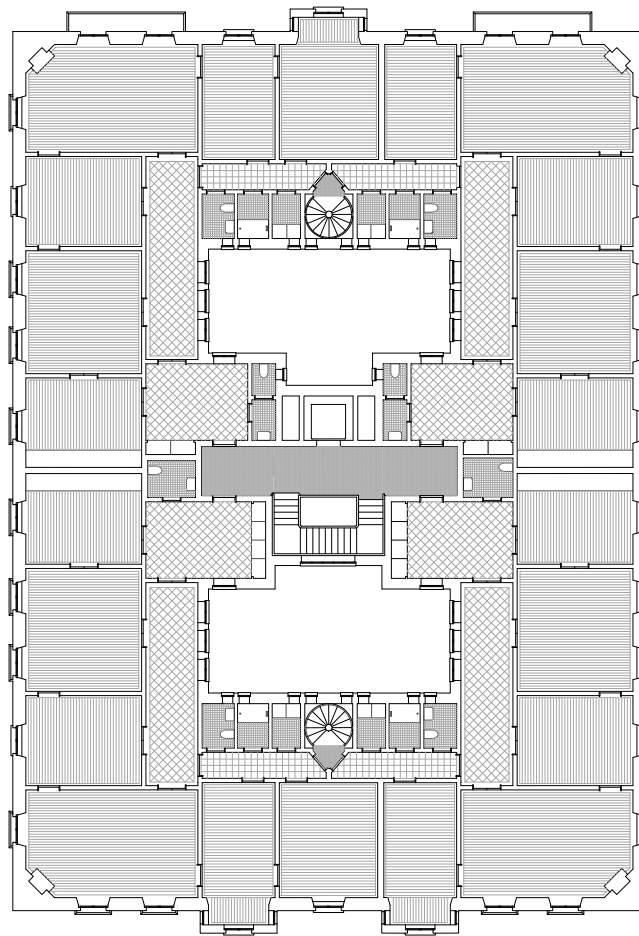


Situation plan 1:1500

The building is a freestanding building with four sides facing different conditions; one public and one private, one oriented north facing a park another one with a view to the sea oriented south.  
A situation where two typologies meet, the block structure from the city center meets the urban villa in the west.



On the ground floor there is three apartments and one shop/office space situated at the northern corner. Residents enter through the main entrance on the western facade; a double door with a canopy. A rather deep lobby takes you to the midst of the building and the main staircase. On the way you pass by a window revealing the prescens of one of the buildings two light wells. The staircase has windows facing south providing light.



Typical plan 1:100



Each floor has four apartment which center around one stairwell and two light wells. The apartments range from 180-190 m<sup>2</sup> and are organized with distribution spaces surrounded by an enfilade of generous rooms. The measures of the rooms and their position makes them general and is left undesignated; they are all living spaces.

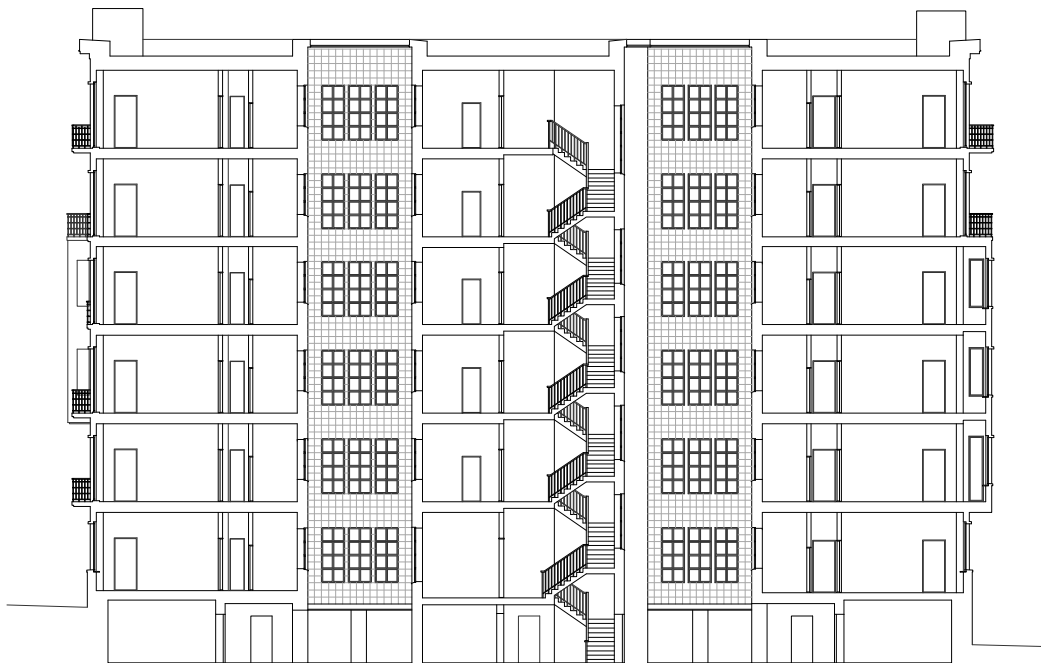
When entering an apartment you first arrive the hallway with wardrobe and access to a toilet. A light well is revealed through the one window. Next you could either enter the kitchen or the gallery space. Once inside the kitchen you can follow an enfilade ending in a fireplace in the corner room of the apartment. The gallery will lead you to the same room as well as give you access to a more private corridor leading to bathroom and adjoining rooms. In the end of the corridor each apartment has access to a internal staircase taking you down to the basement.



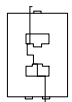
Section 1 | 1:100



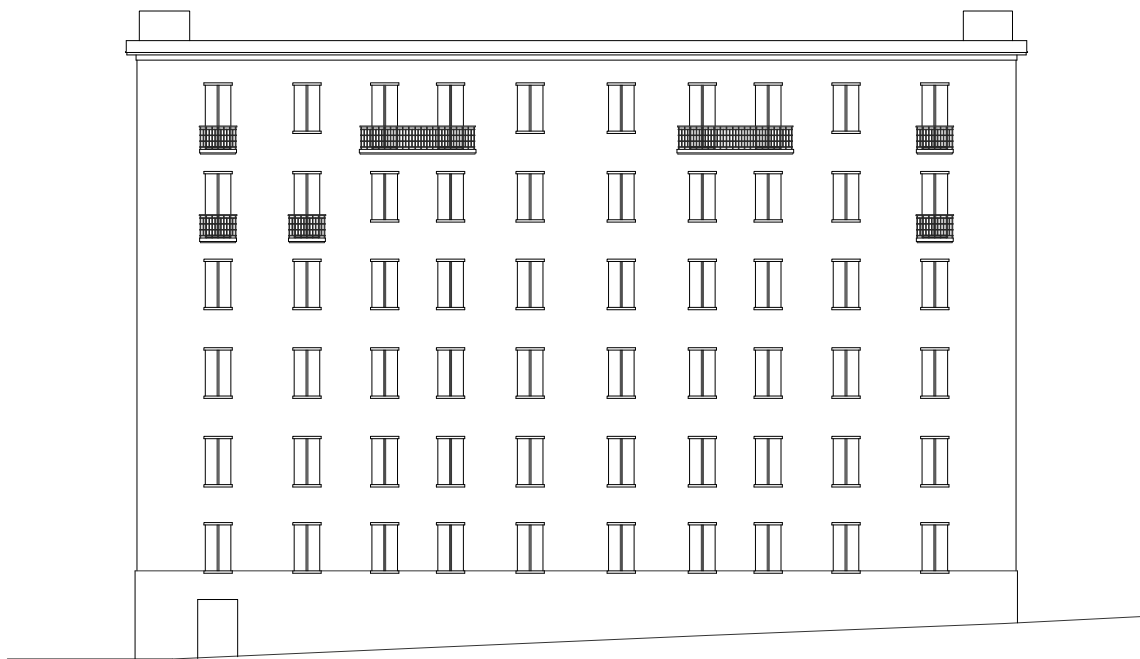
This section shows the distance between the apartments measuring in such a way that the privacy is not lost, but rather creates a prescens of neighbourhood.  
Structurally the in-situ casted decks spans from the outer facade to the inner facade. The facade of the light wells are cladded with glazed tiles that reflect and enhances the light conditions.



Section II 1:100



On the left side of the section you see the entrance situation, with the hallway window and how you look over into your own apartment on the other side of the light well. In elevation you see the windows of the gallery space in the neighbouring apartment.



Facade E 1:100

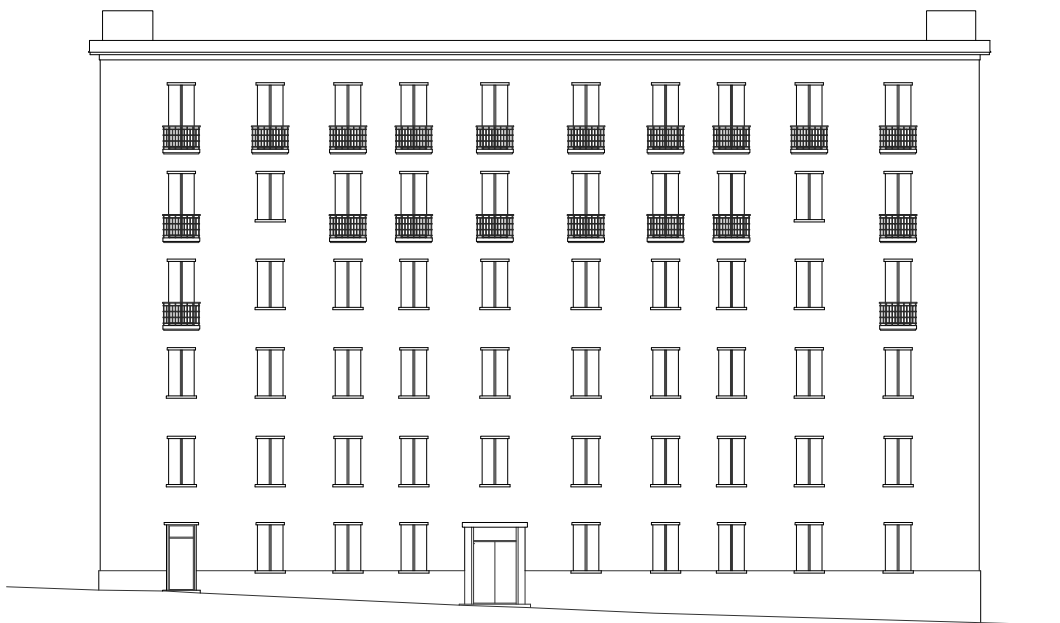
The eastern facade facing a narrow street and the neighbouring building. The most informal facade. In the left corner there is entrance to the basement.



Facade N 1:100

The northern facade overlooking the park is organized with narrow balconies and french balconies. This gives the resident the possibility to open their windows and let the trees of the park enter the rooms. In the right corner you see one of the doors entering the shop/office spaces on ground floor.





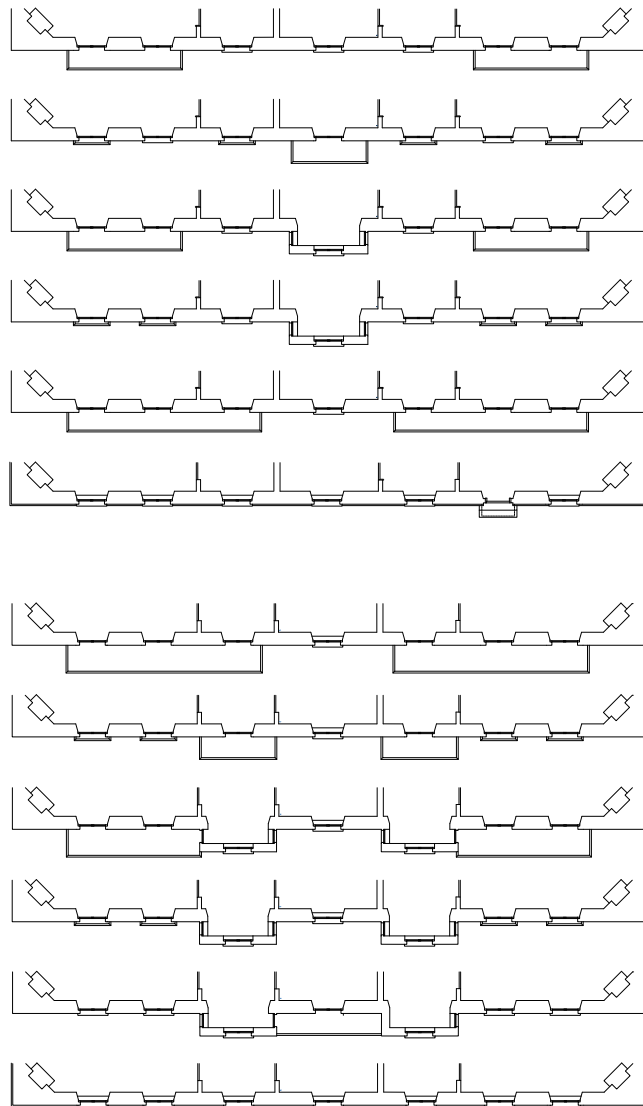
Facade W 1:100

The western facade with main entrance and the most public condition. The facade is organized with regular windows and french balconies at the upper floors. The plinth and the roof with the chimneys sticking up creates a top and a bottom of the building.

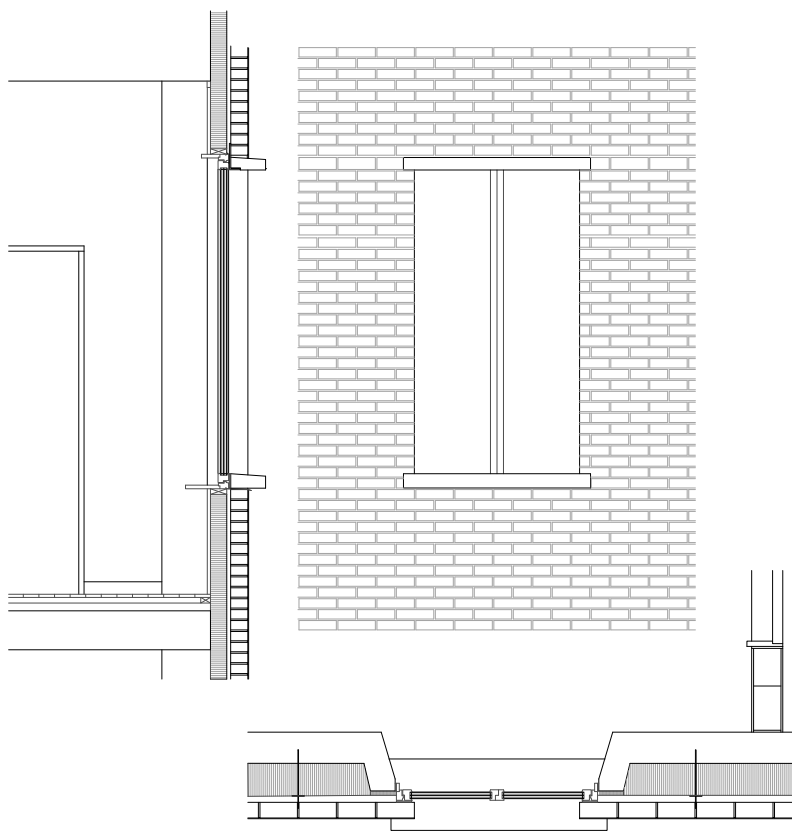


Facade S 1:100

The southern facade is facing an adjacent building but at the upper floors the sun conditions and the view to the sea makes the facade organized with more generous balconies than on the northern facade.



As a result of the variation in the facade and alterations according to the surroundings; the facade becomes a stacking of different segments with variations in window, balcony, bay window and french balcony. The result is that every apartment is slightly different.



Detail 1:20 showing how the window open inwards and is placed behind the brick cladding, bagwashed. The structural pre-cast concrete elements are exposed and the rebated profile gives a thickness experienced in the interior.