

# CENSOR BOOKLET

UNE TANGEN REKSTAD  
SPRING 2018

## A short introduction to the project

Oslo is the home of 74.000 students. It has the greatest offer of studies in Norway, which is natural for a capital. However, the city's student accommodation is poor. The beginning of each semester reveals a crisis in the capacity of student housing in Oslo.

Norway has a national goal to offer accommodation to at least 20% of it's students. Oslo is currently covering only 12,74% of the city's students.

This project addresses the current lack of accommodation for students in Oslo by injecting a student housing project into an existing gap in an urban block in Tøyen. The program springs out of both the urgent need, and the interest I have for collective and temporary forms of living. I believe that in the near future, these forms of living will be more common in Norway, both out of need and interest.

The chosen site is an infill site in Tøyen in Oslo. The surrounding apartment buildings make up a urban block with an inner courtyard for all of its residents. This is an urban site in the centre of the capital, with many urban qualities such as culture, shopping, public transport, places to be active, places to relax, etc. in an immediate distance. The botanical garden is one block away. At the same time the site is in a domestic situation with urban blocks of living in typical Oslo "bygårder" (urban blocks) with ground floors for the most part also being domestic. The streets around this urban block, are very little trafficated. The project is situated at the end, one-way of a dead end street, and the north-west longside is completely shut for traffic towards Rudolf Nilsens Plass (square).

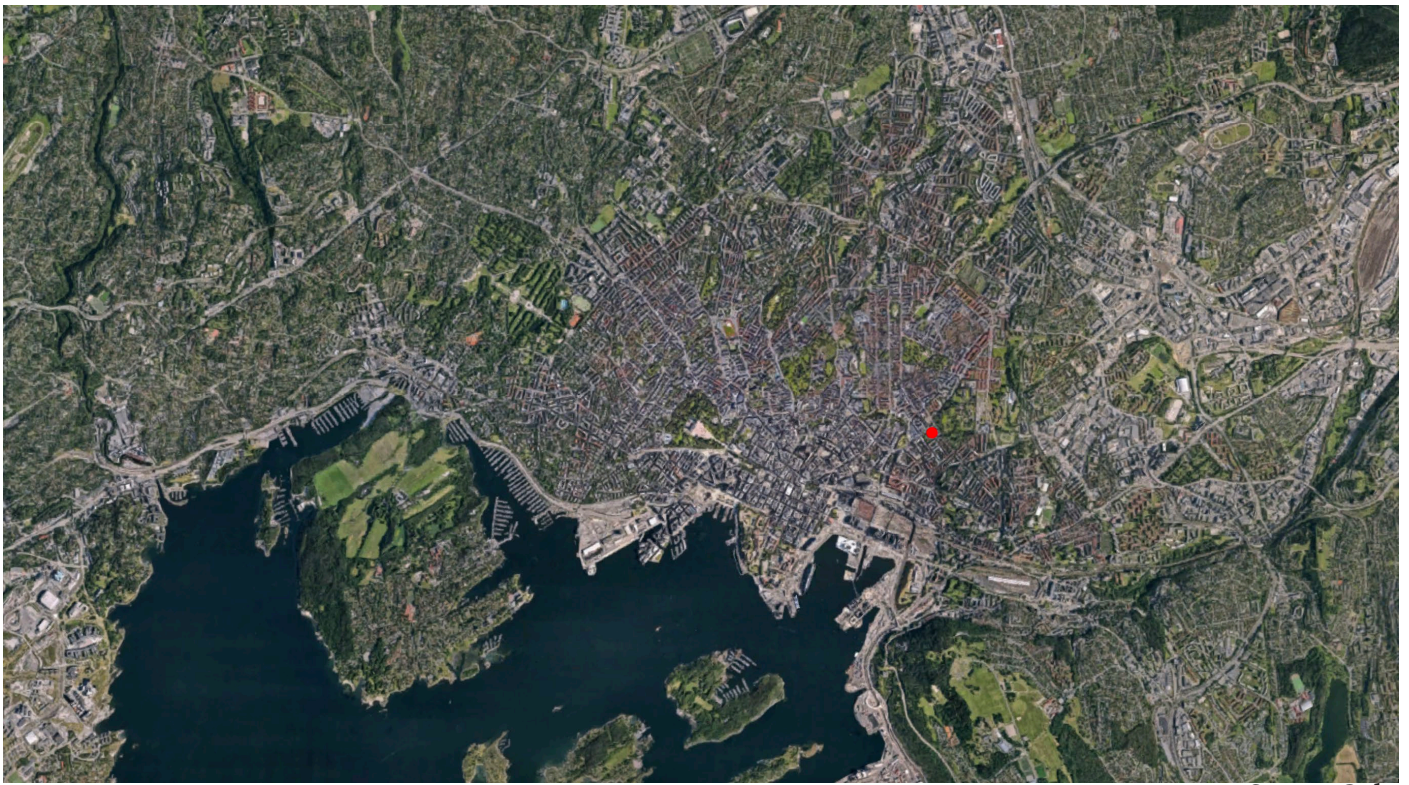
Through my studies, i have chosen to fill in the existing gap that currently feels like an interruption completely and thus creating a continuation in the street scape. The roof was more challenging to continue while simultaneously creating good spaces within. The solution was a peek that creates a double gabled roof.

The neighbouring facades in the street scape, follows a geometry with same size windows and spacing, while being decorated with lines and geometrical reliefs. The jagged facade in my project can be seen as an architectural response to these decorations, continuing horisontal lines and borrowing withs from them.

The student house consists of four collectives separated by floors. These open for a social and physical way of sharing and gaining from other students in similar life situations, with spaces ranging from completely private to completely shared. Alongside the student housing program, is a shared space for the residents of the block on the ground floor of the project. This is a space meant to have a low threshold for usage and a flexible layout. So that the uses may range from doing yoga, having a wedding reception to filling your water bottle when having a picnic in the courtyard. The courtyard itself has recieved a clean-up to encourage a more frequent use.

Through my studies of the block, i decided to ad a passageway into the courtyard, even though the current gap is not used as a passage. The gap creates a division between what is shared by the whole block, and the student housing project. The top floor is shared by all the students and works as a common room with access to the roof terrace with impeccable sun conditions.





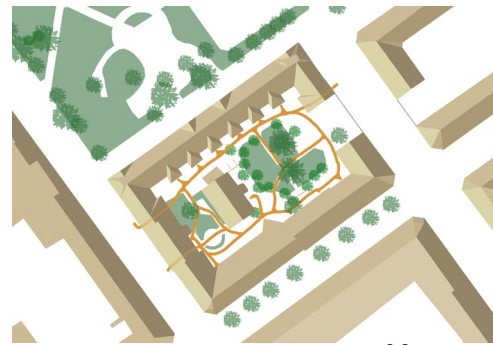
Site in Oslo

Site in Tøyen

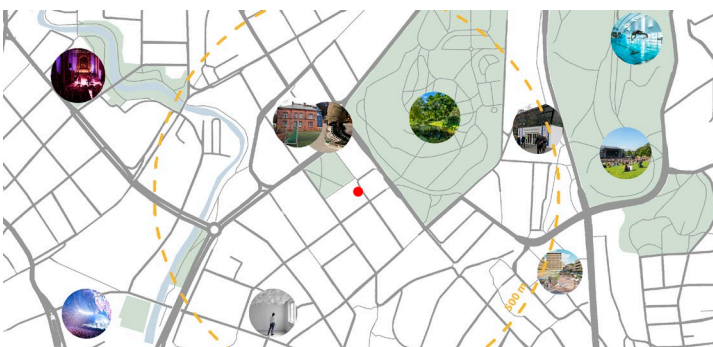


Public transport

The block



Movement



Activities



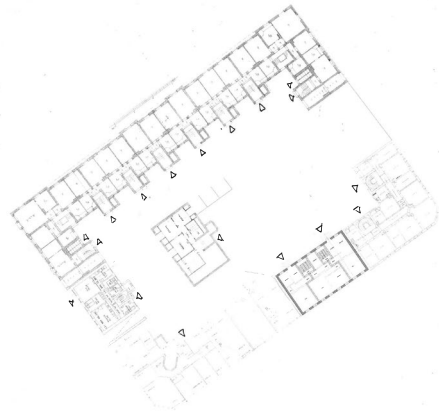
Shared



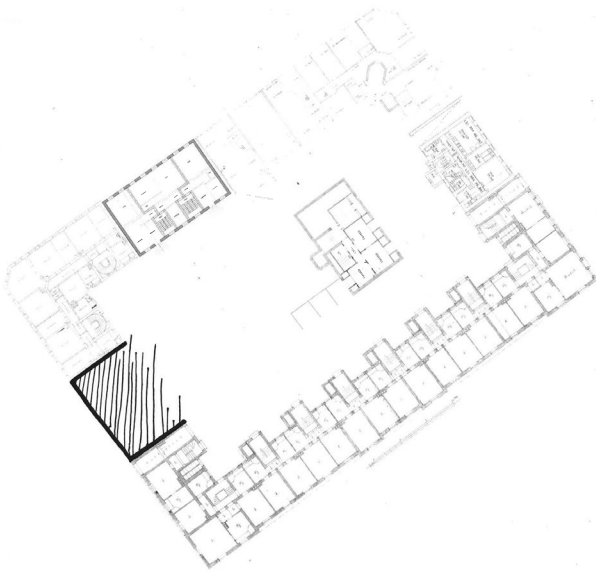
Dead ends in area



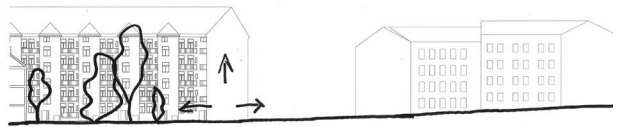
Views



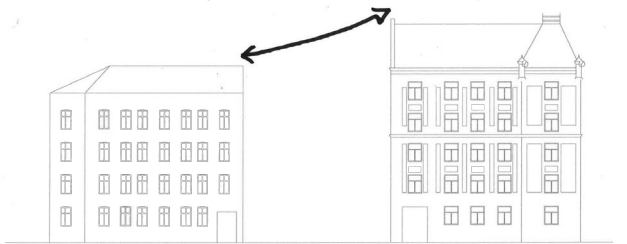
Arrival and entrances



Fill site

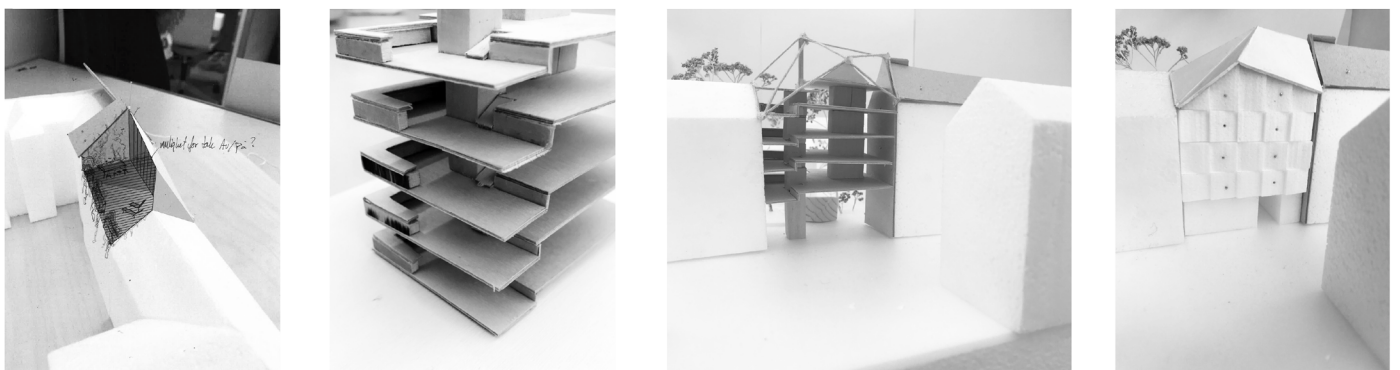
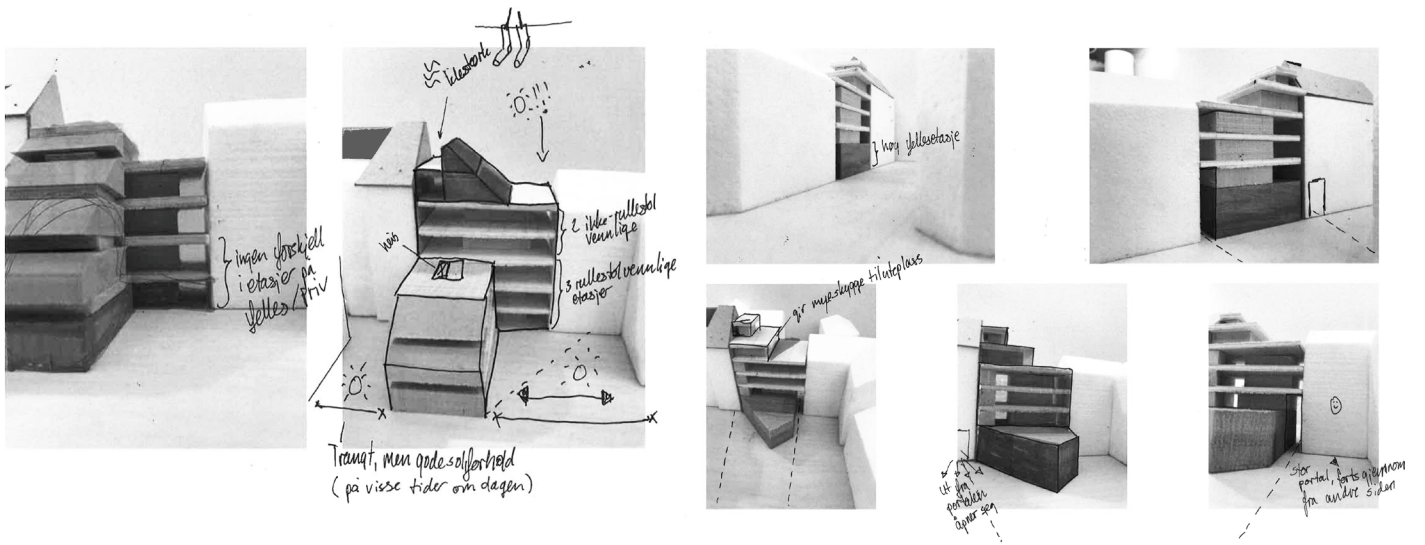
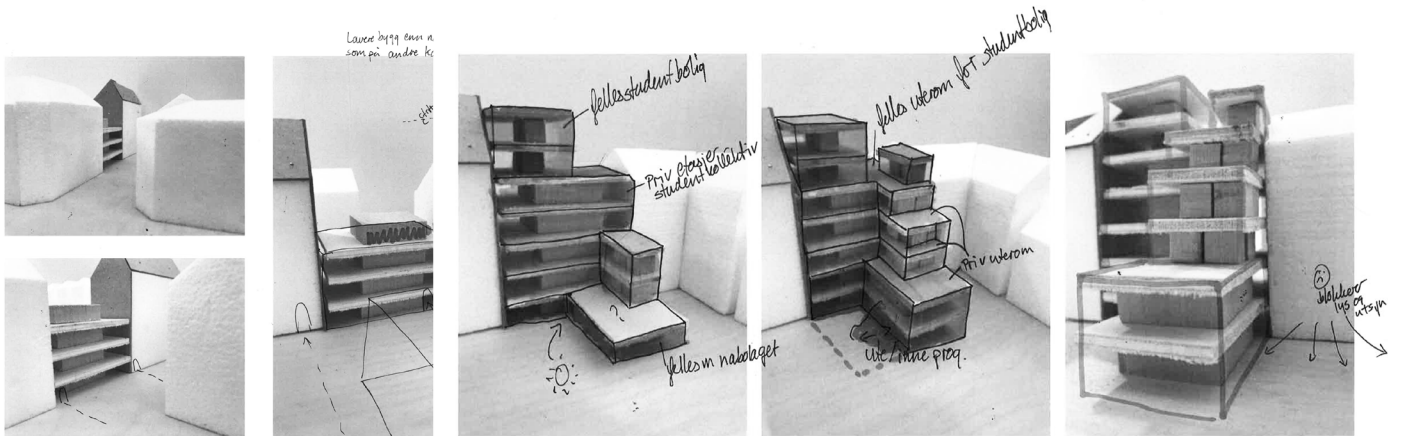
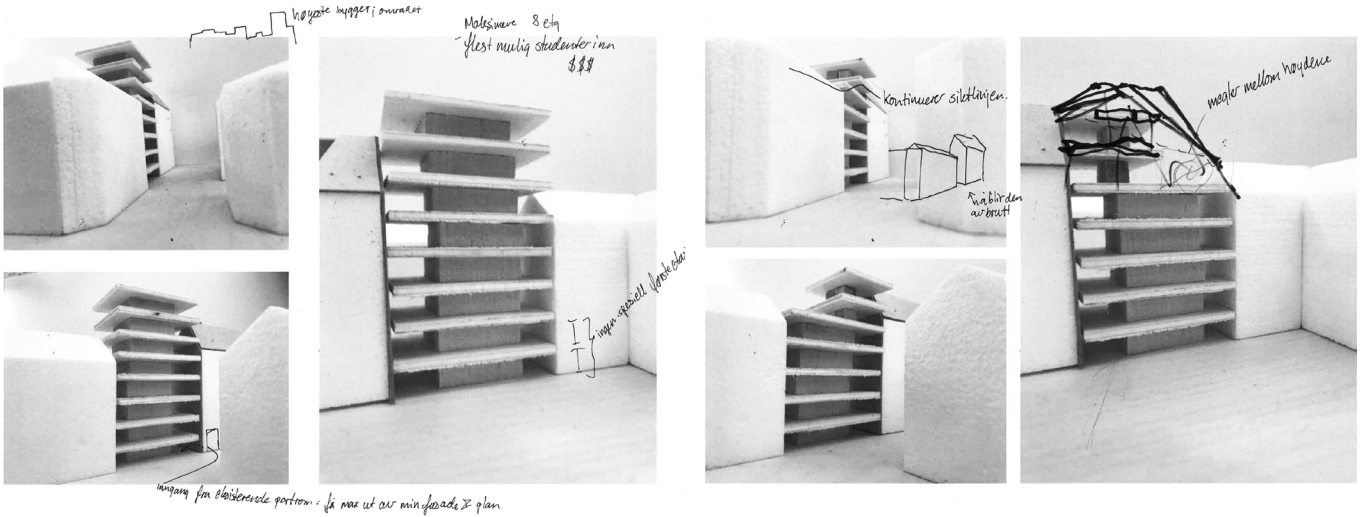


Connecting point

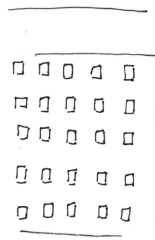


Continue roof scape





Sketch models



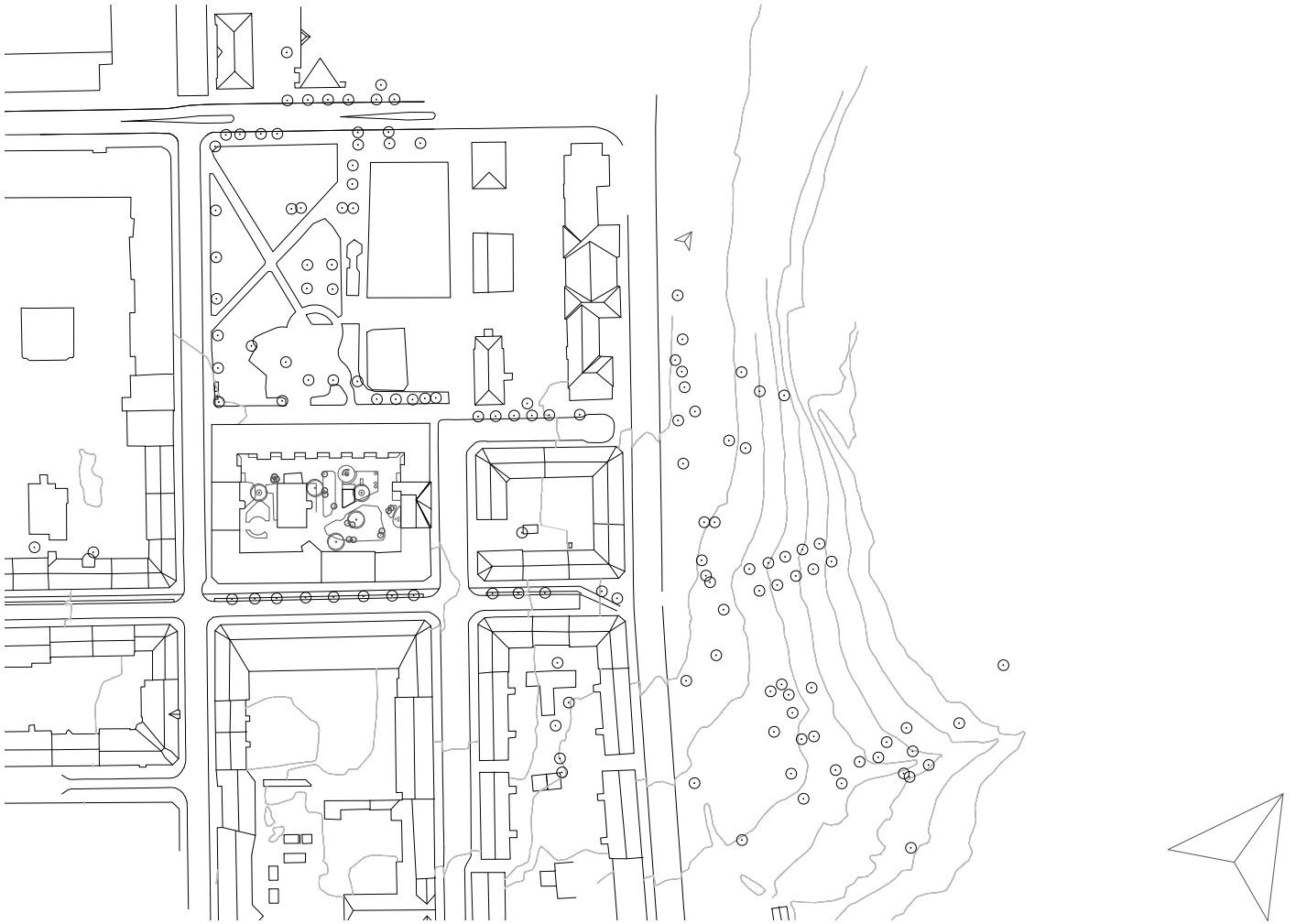
Strict facade towards street, more free itowards courtyard

\_\_\_\_\_



Cross section





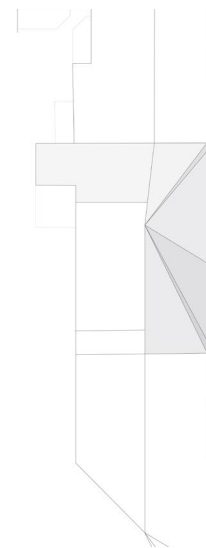
Situation  
Plan and section



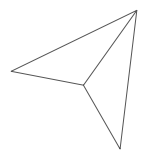
Typical plan



Top floor plan



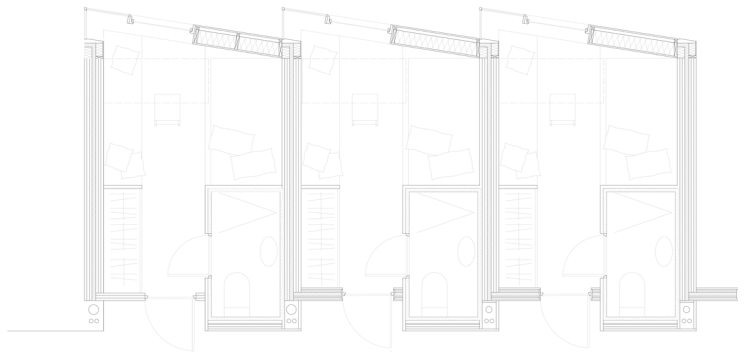
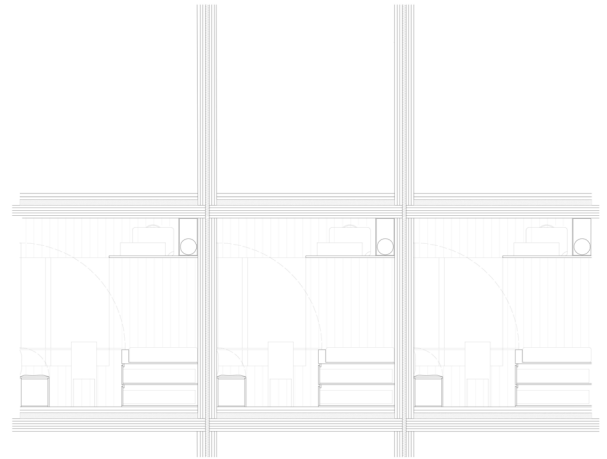
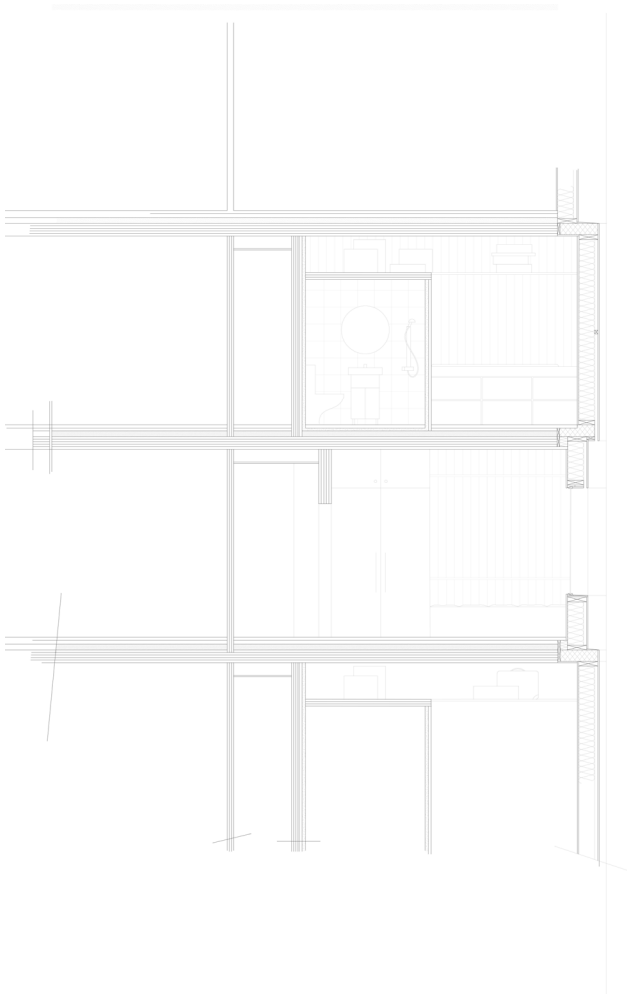
Roof plan





Long section through student rooms





Student rooms. "jag" in facade explained:  
This detailing ensures a straight horizontal line, while a jagged  
vertical line between the rooms in elevation.



Elevation towards street



Elevation towards yard