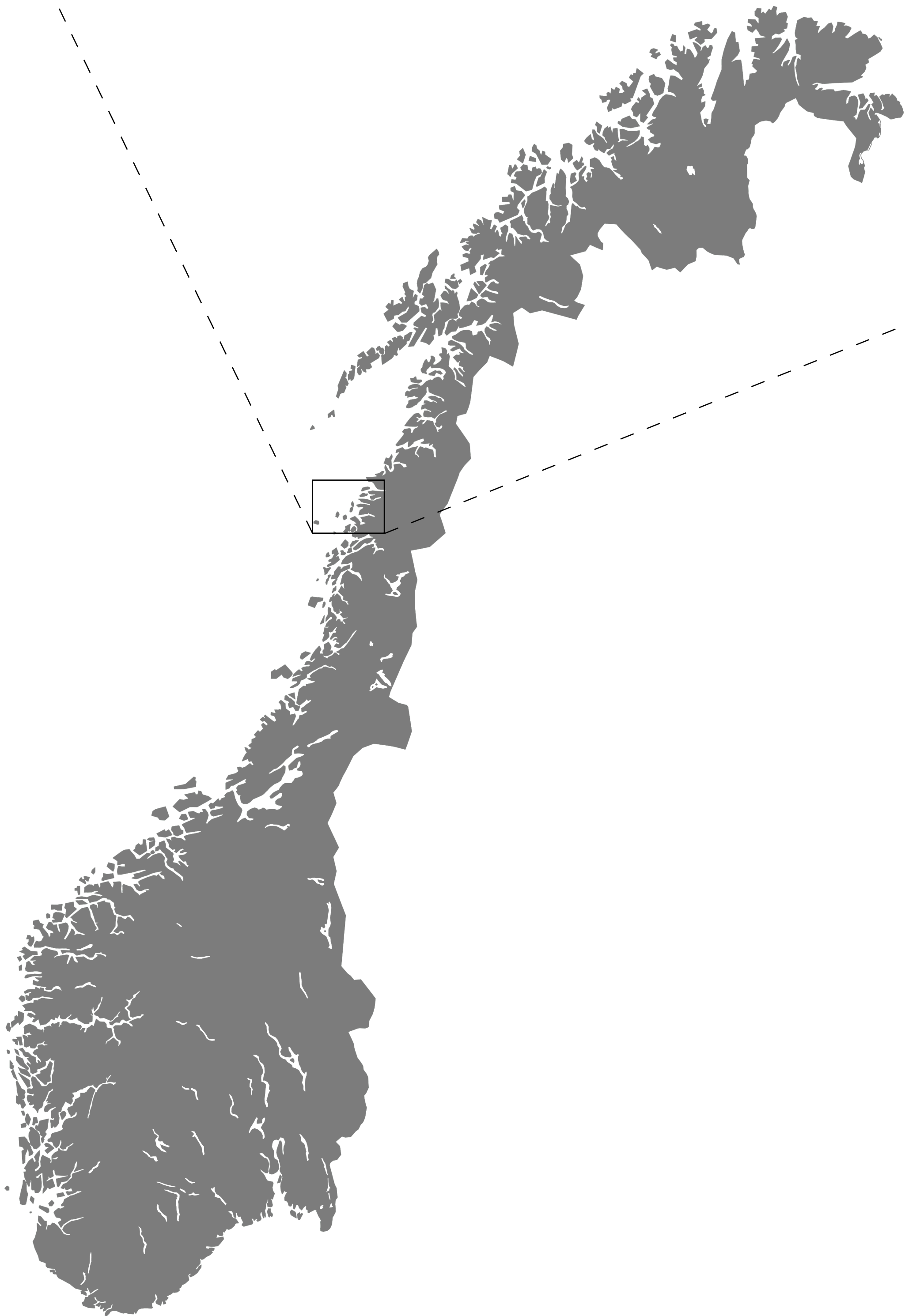


Current school districts in Redøy Municipality



The School of the Isles is about changing the perception of community, and to explore how architecture can bring new meaning to a traditional program. What are the boundaries of a community surrounded by water? The answer seems simple when looking at a geographical correct map. But I think the ocean represents an endless number of possibilities in connecting people and communities, and I think space and form has an important role to play.

The School in the Isles will become an important building for the entire island district of Redøy. It will become an object that represents a node in the public sphere. How should it appear?

Schools in these communities are small, but they are often the biggest building on the island. How do we deal with relatively big structures in a context of small houses?

During the process it has been important for me to explore the relationship between autonomous external forms and internal space. How do the one inform the other, and what spaces can come out from designing a building from, so to say, starting in two opposite ends. Another factor has been important for me in order to honor at least one segment of local building tradition; namely pragmatism.

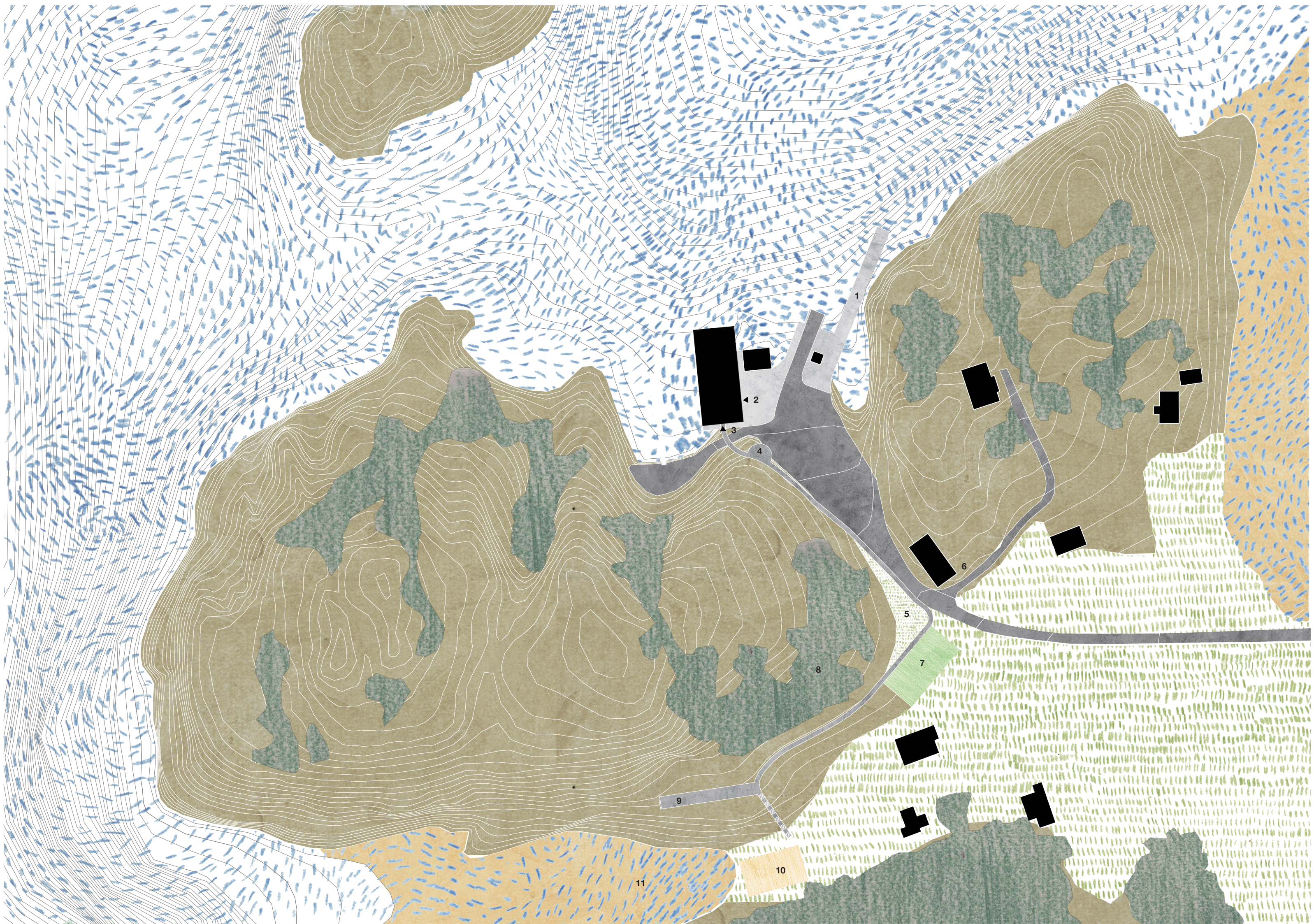
This project has been created where uncompromising forms has met with the demands of a fairly straight forward program, mixed with the some pragmatism from local building tradition, and it has become The School in the Isles.





1: Ferry quay. 2: Site. 3: Grocery store. 4: Culture school. 5: Church. 6: Existing school. 7: Summer café. 8: Community building.

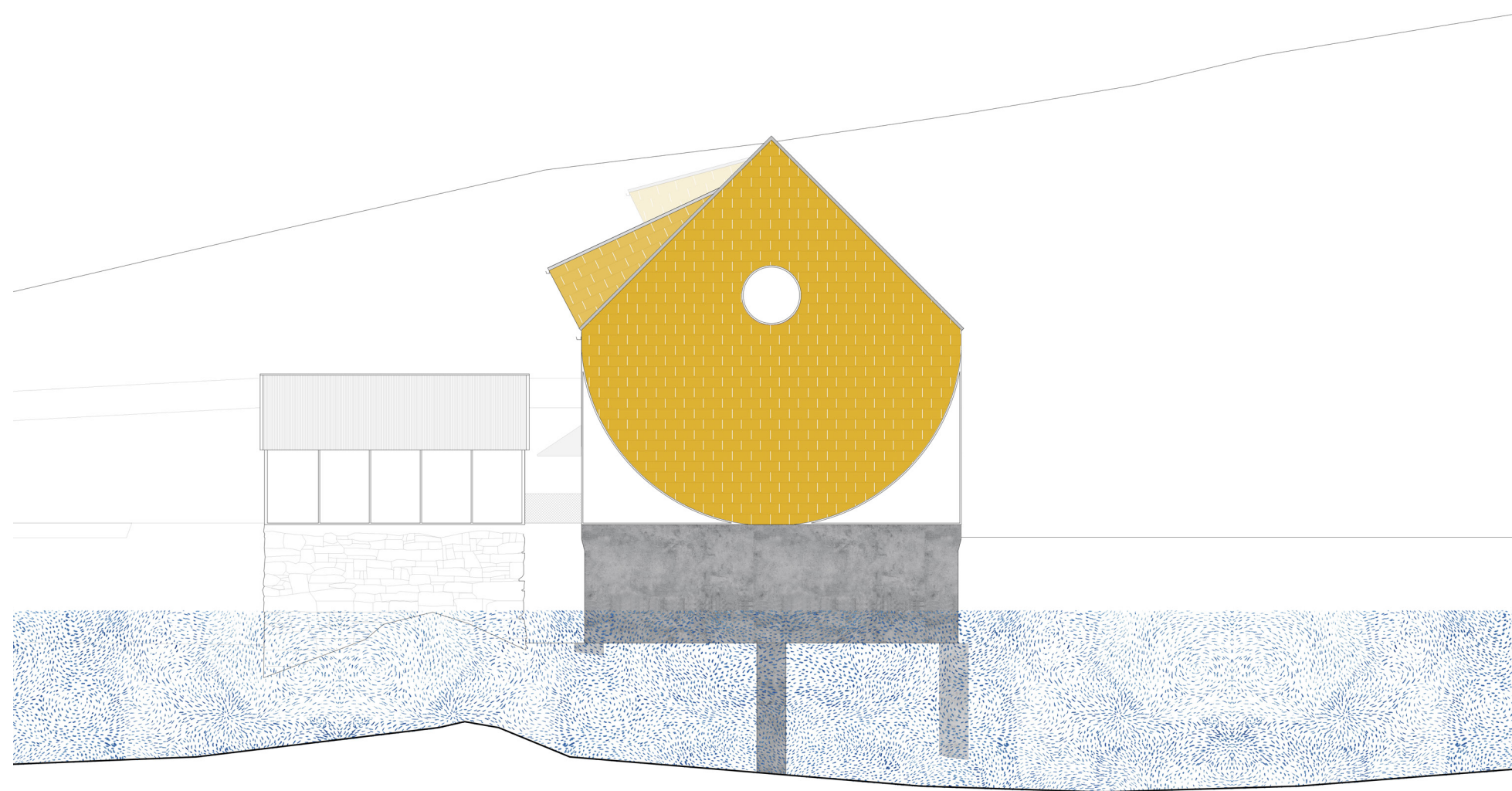
Map of Gjerøy 1:15 000



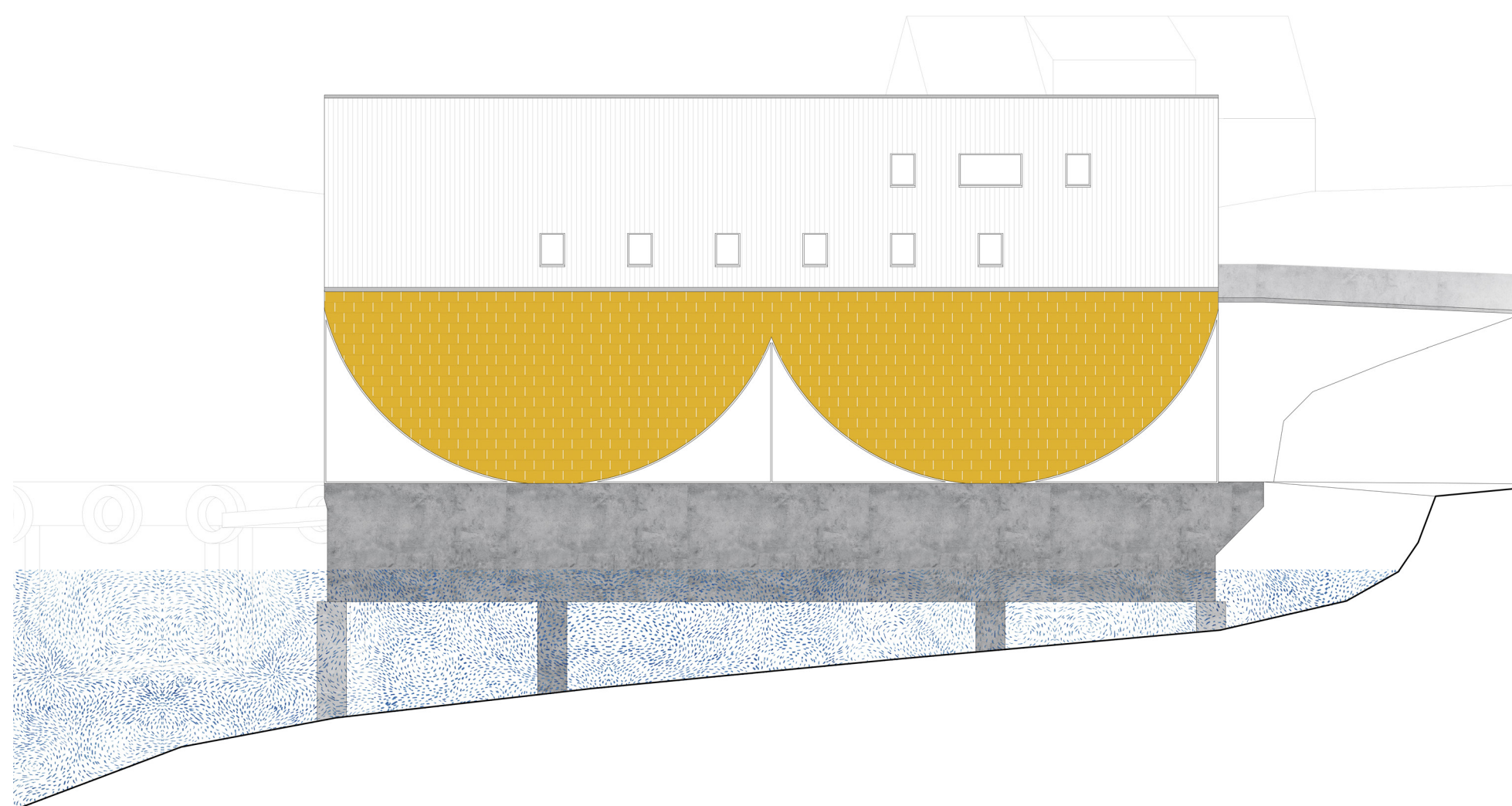
1. Arrival point for the school boat. 2. Lower entrance. 3. 3rd floor entrance. 4. Nice view towards Rødeyløva. 5. Garden. 6. Grocery store to buy lunch in. 7. Football mini-pitch. 8. Trees to build huts in. 9. Nice view towards Nesøya. 10. Beach volleyball court or huge sandpit. 11. Nice beach where you can find crabs and crayfish.

Situation plan 1:1000

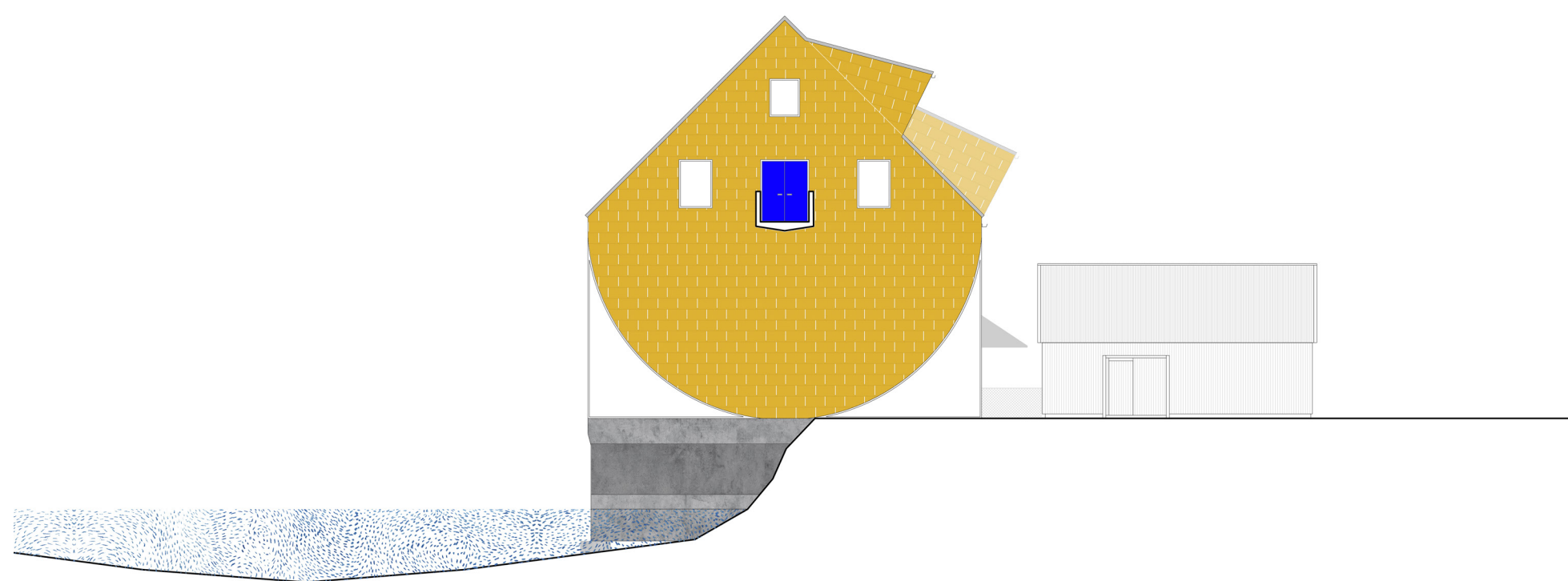




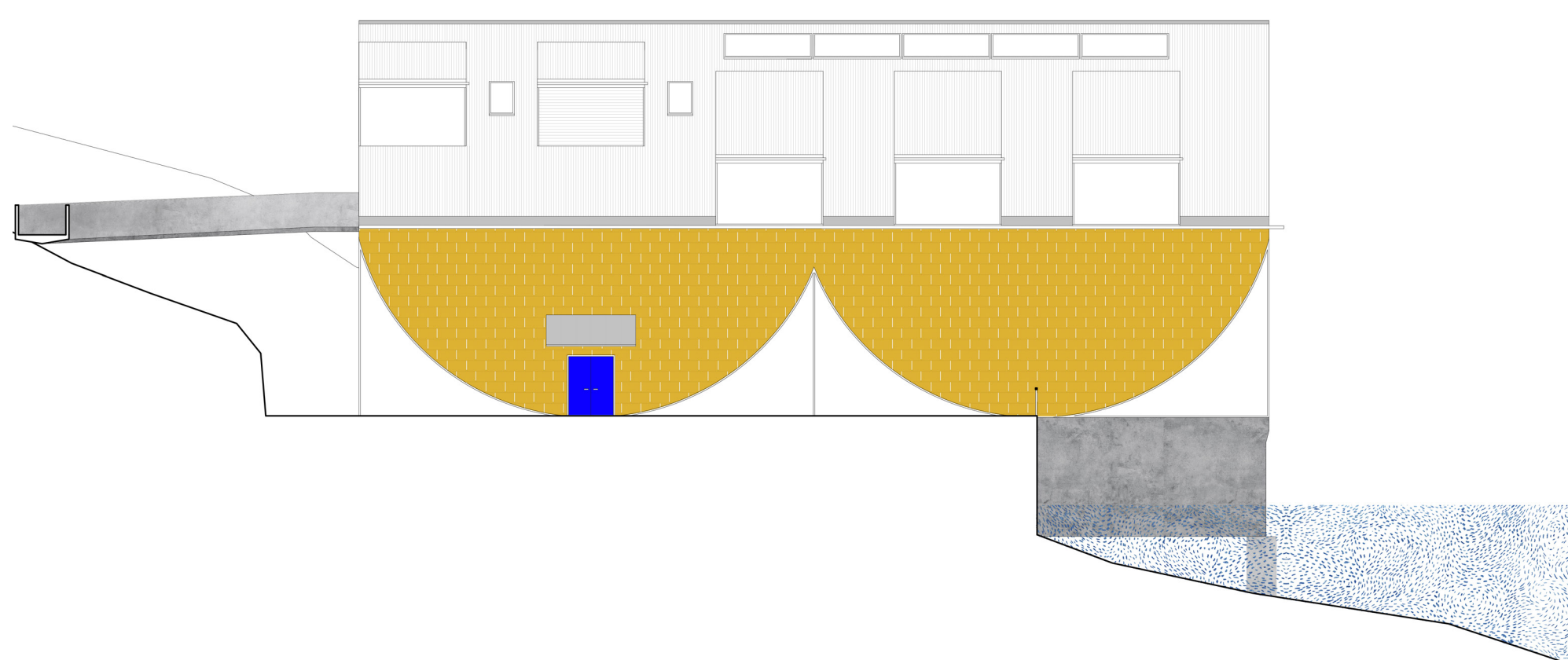
Elevation North 1:200



Elevation West 1:200

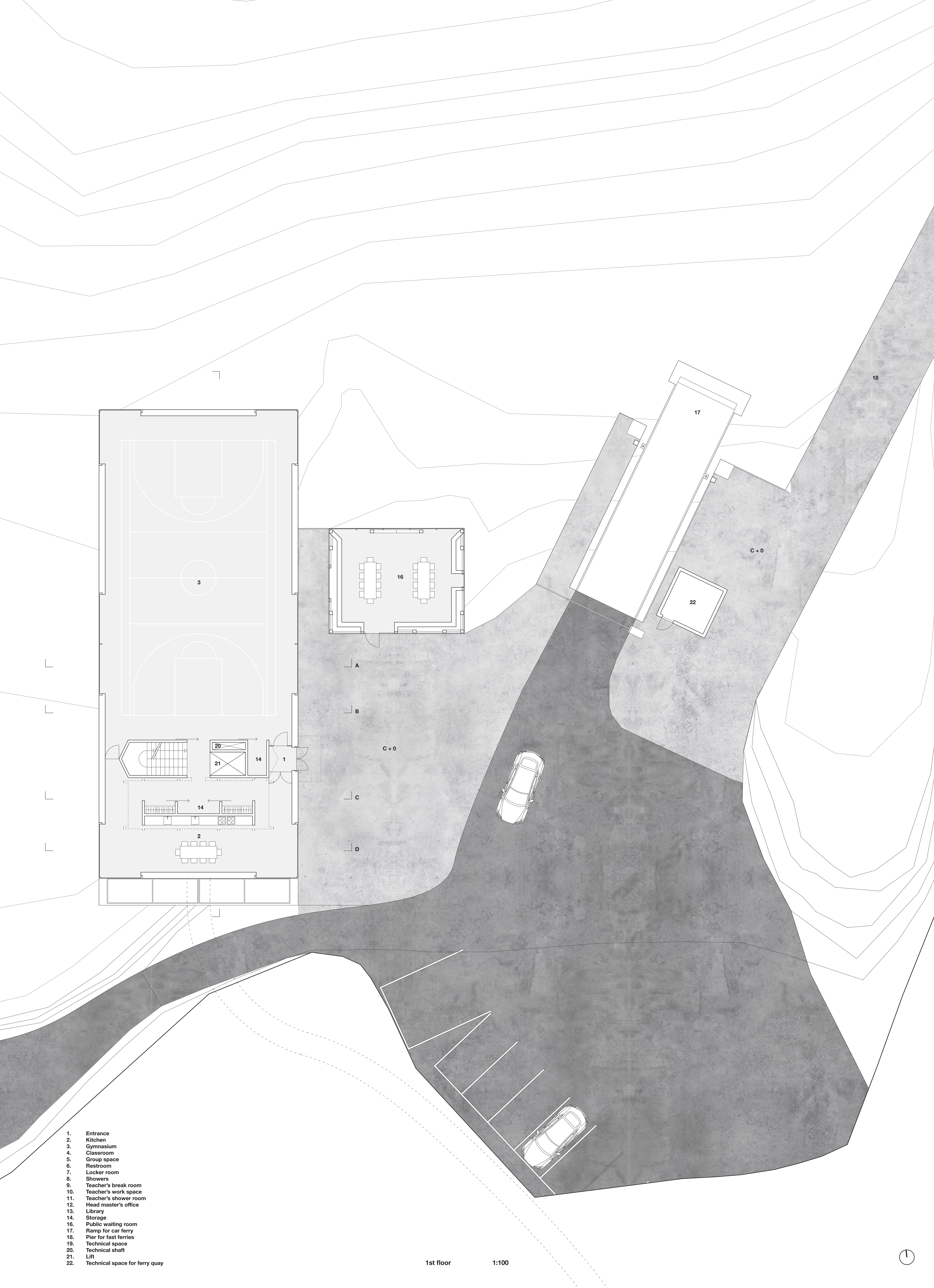


Elevation South 1:200



Elevation East 1:200





1. Entrance
2. Kitchen
3. Gymnasium
4. Classroom
5. Group space
6. Restroom
7. Locker room
8. Showers
9. Teacher's break room
10. Teacher's work space
11. Teacher's shower room
12. Head master's office
13. Library
14. Storage
16. Public waiting room
17. Ramp for car ferry
18. Pier for fast ferries
19. Technical space
20. Technical shaft
21. Lift
22. Technical space for ferry quay

1st floor

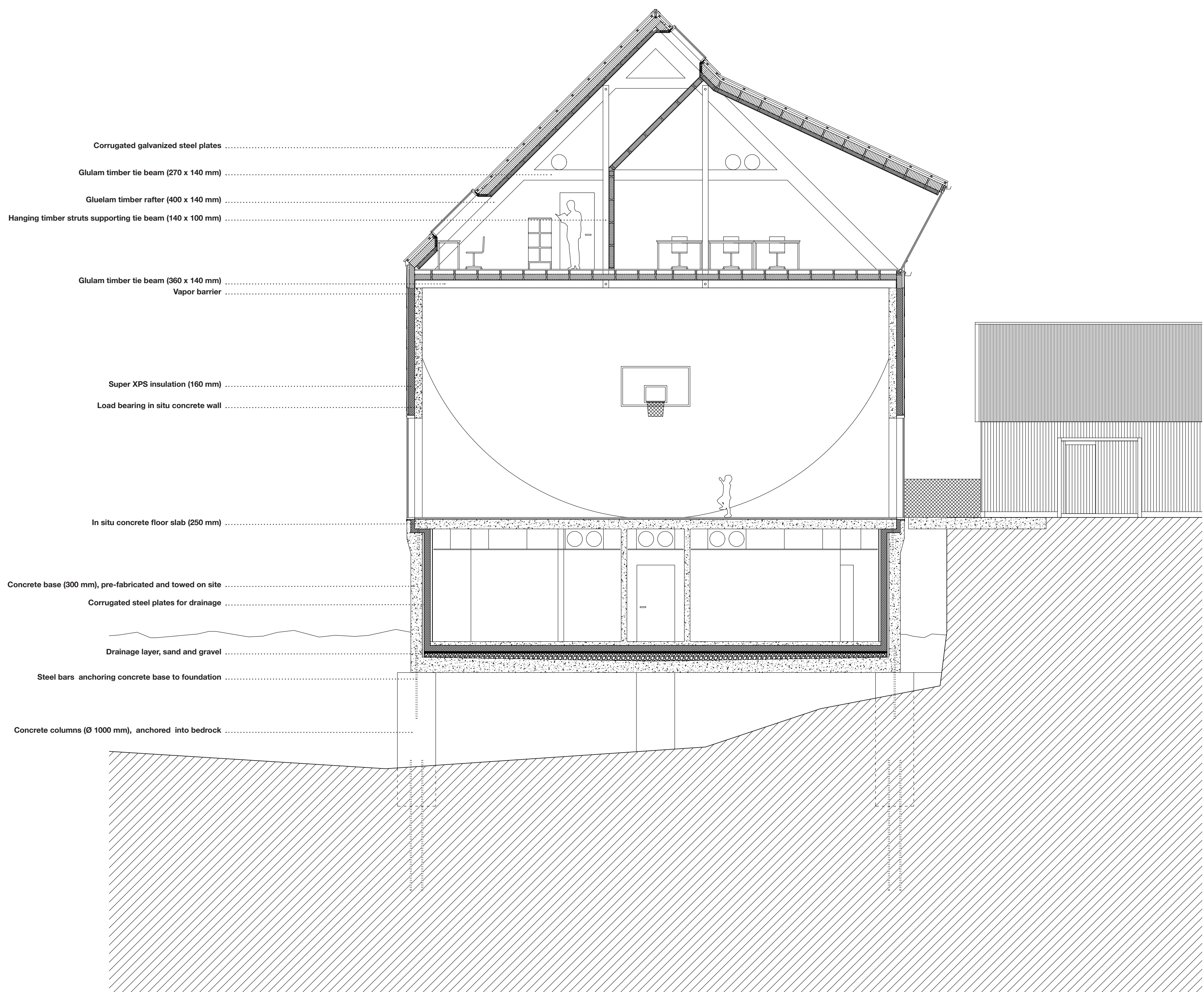
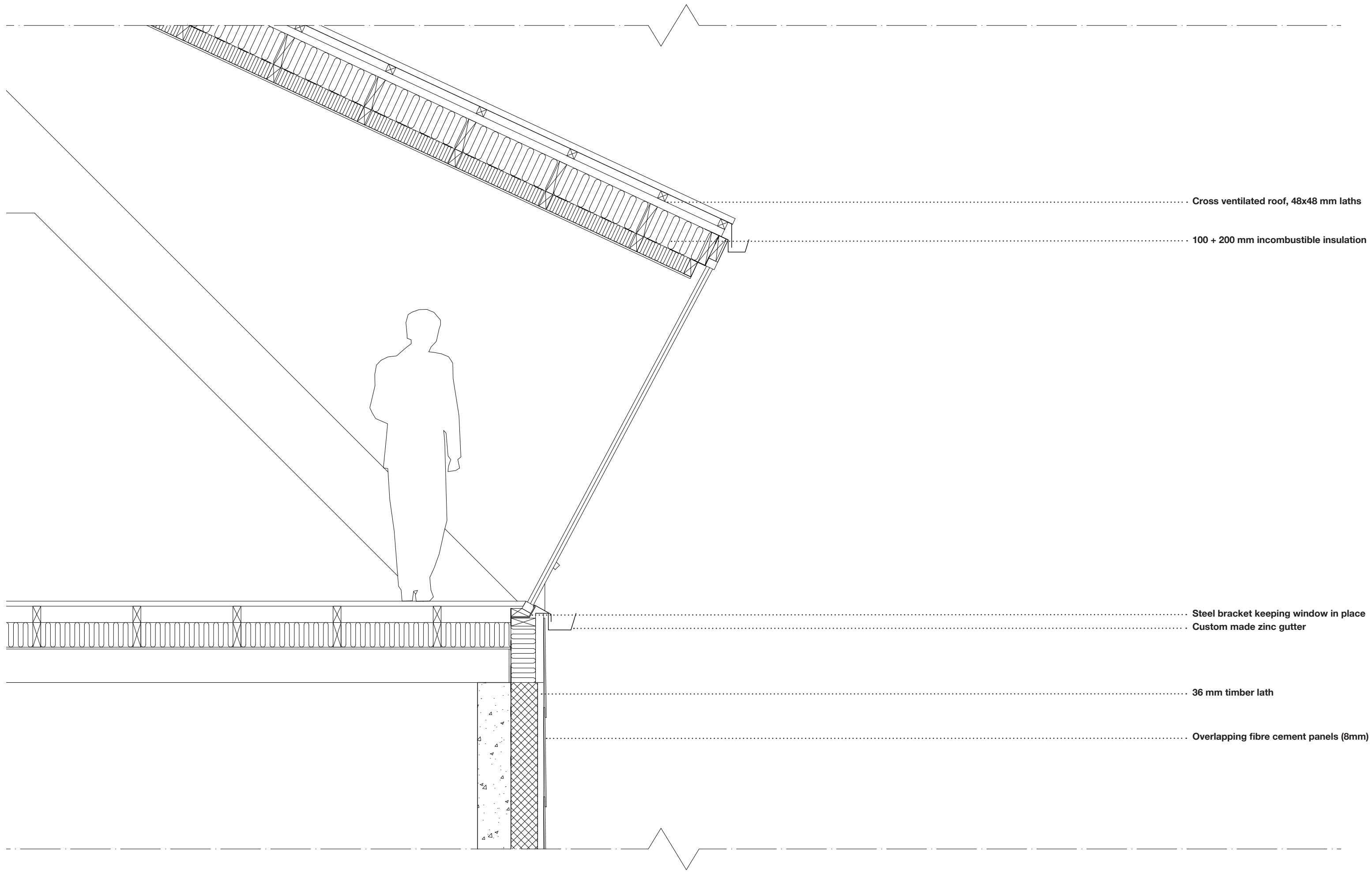
1:100



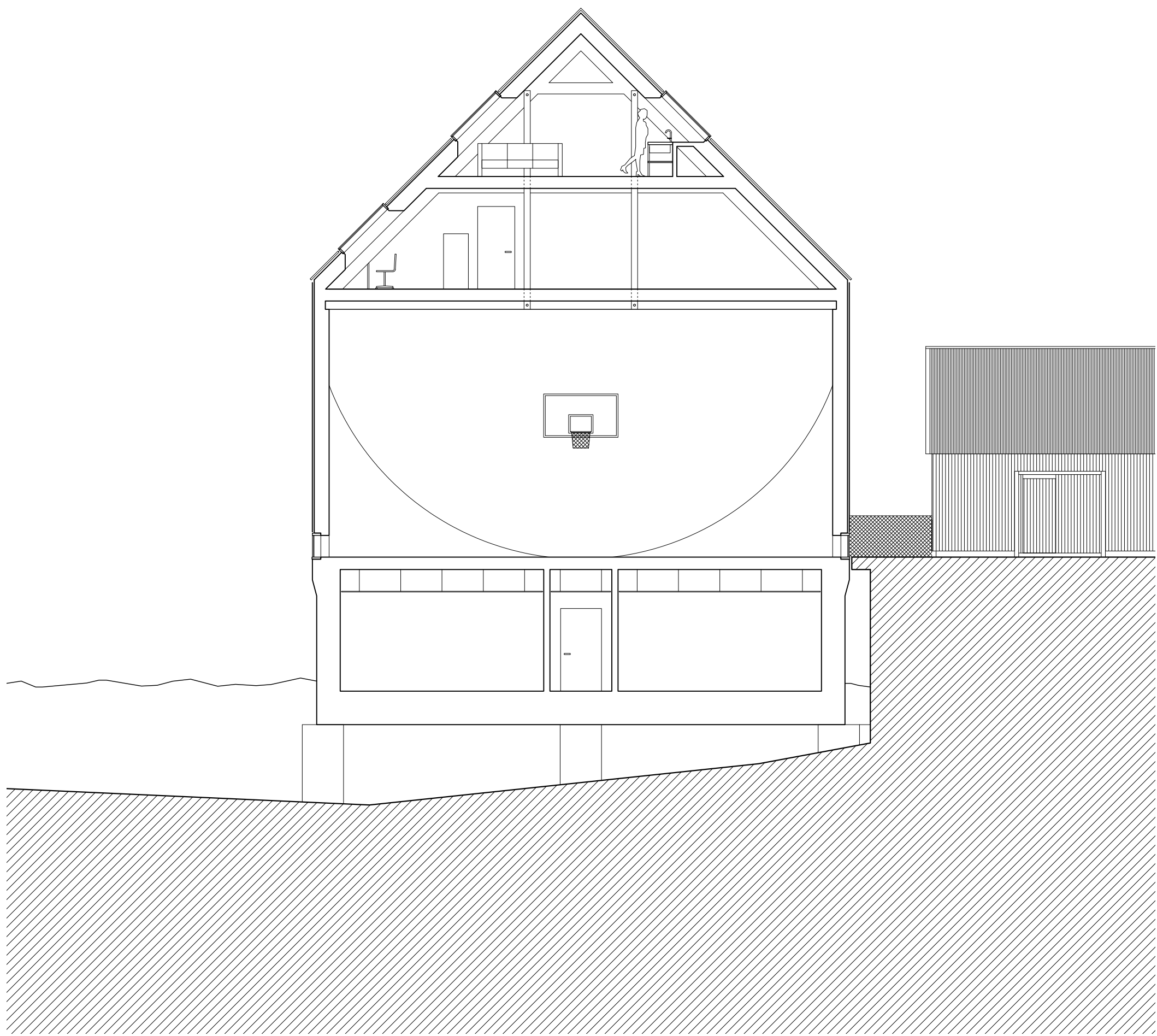




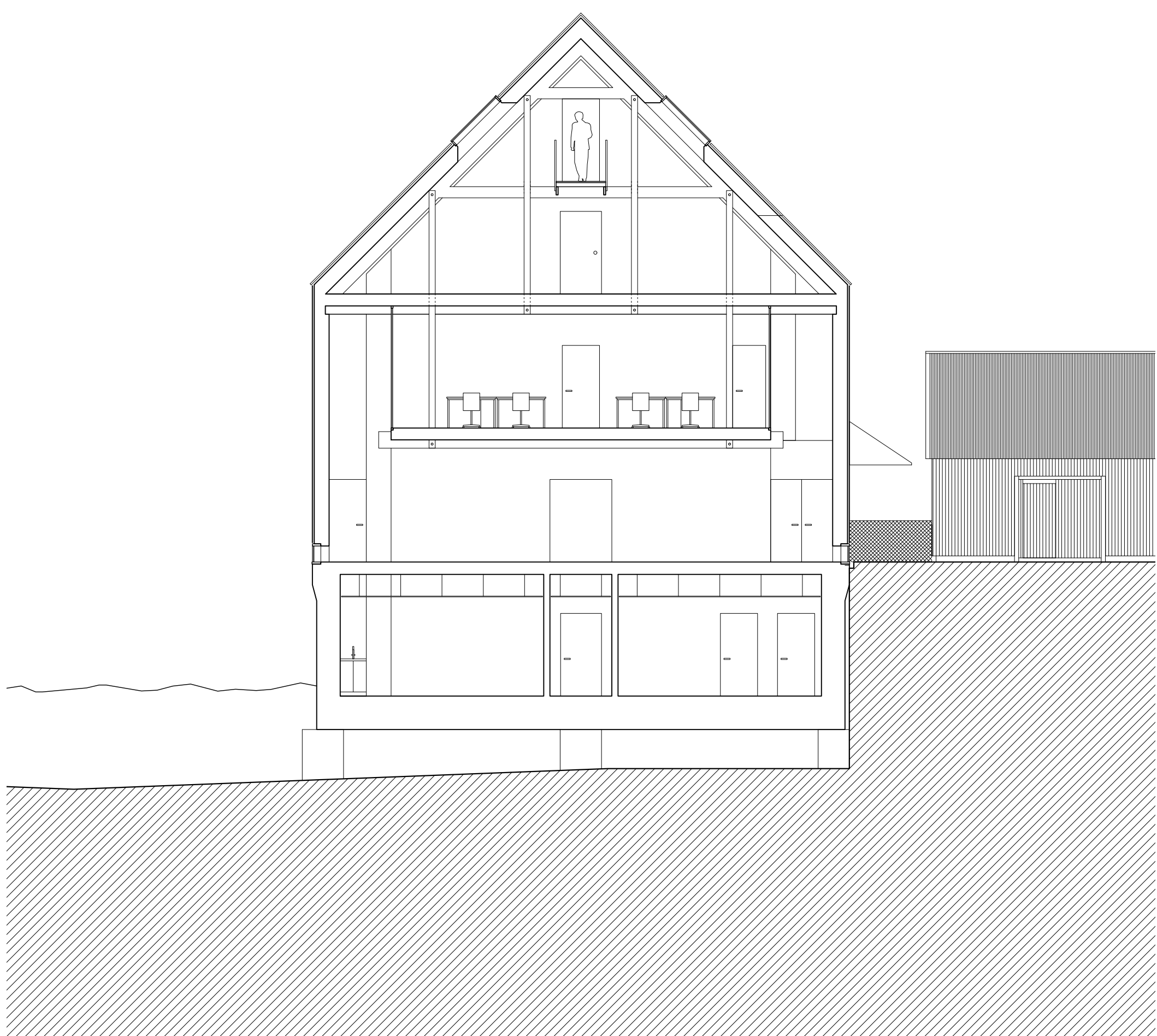






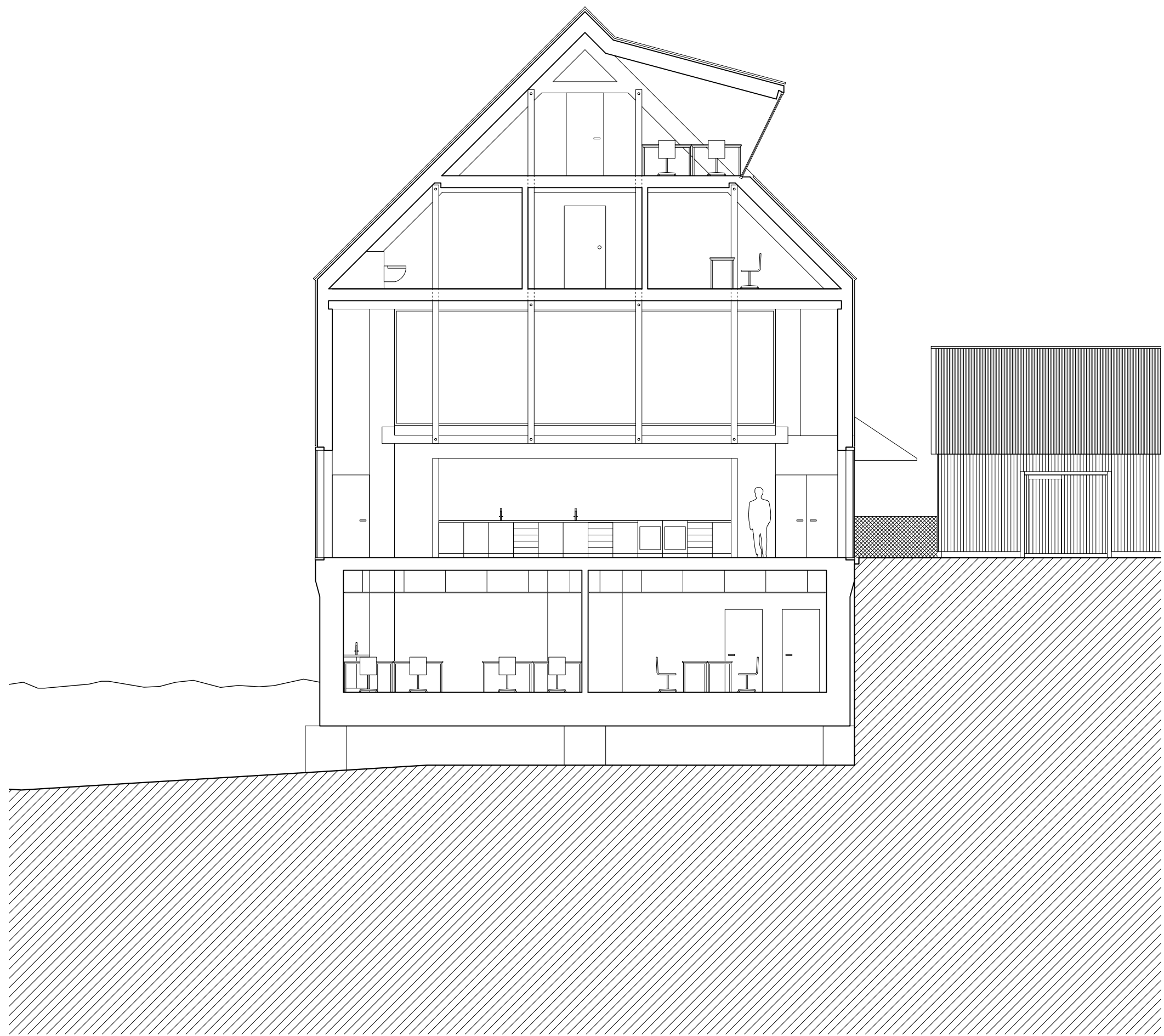


Section B 1:100

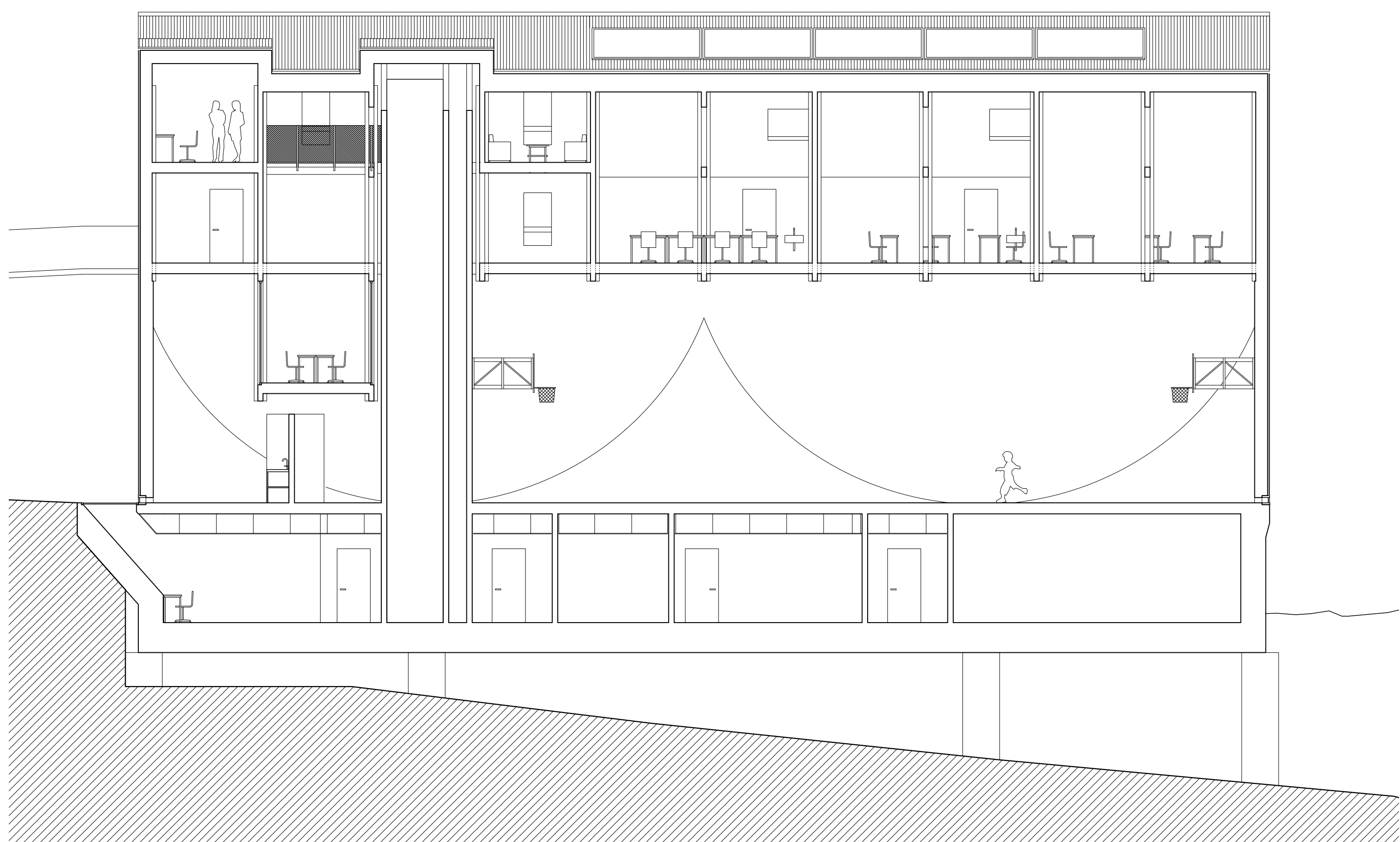


Section C 1:100





Section D 1:100



Section E 1:100



