

WAREHOUSES AND LOGISTICS BUILDINGS

Kjetil Mikael Sortland

This is a collection of reference projects that has been relevant to my work. The collection includes buildings of various program that is somehow dealing with a long horizontal façade. There are both examples to follow and examples to avoid.

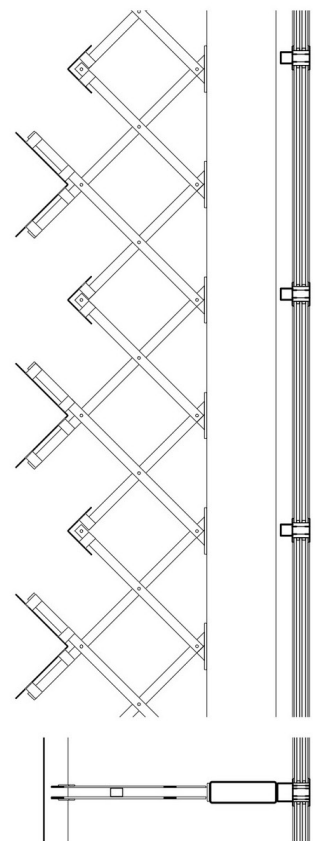
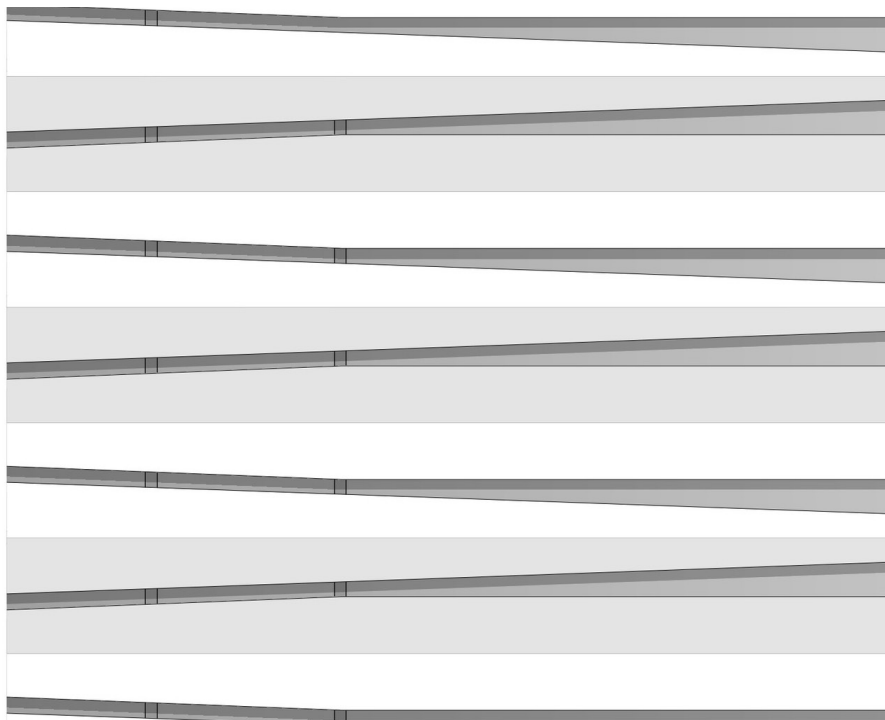
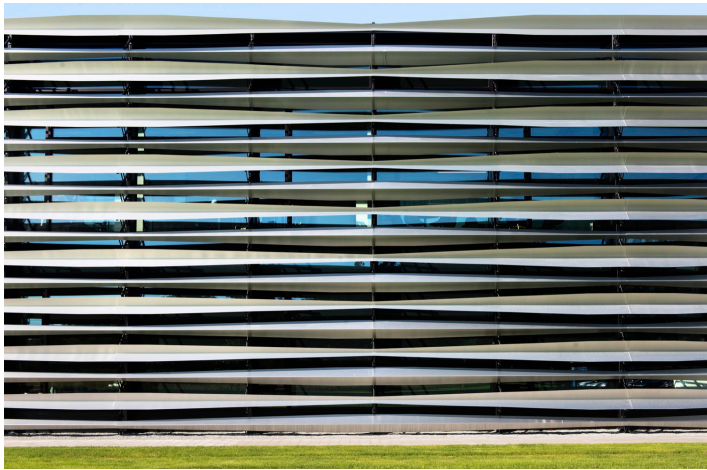
Trumpf Poland Technology Center

Program: Office, warehouse

Architect: Barkow Leibinger

Area: 3200 m²

Year: 2016



Cantonal Museum of Fine Arts

Program: Museum

Architect: Barozzi Veiga

Area: 3200 m²

Year: 2019



Logistics and Auxiliary Services for JATA

Program: Office, warehouse

Architect: José Miguel García Pérez

Area: 18550 m²

Year: 2017



Factory in AWAJI

Program: Factory

Architect: OHArchitecture

Area: Unknown

Year: 2019



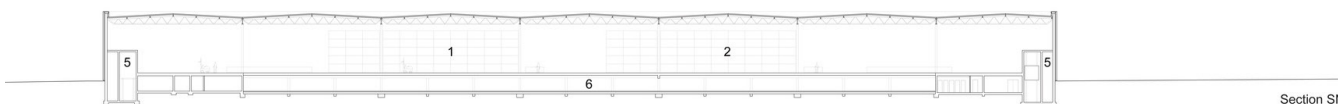
Factory Building on the Vitra Campus

Program: Factory, warehouse

Architect: SANAA

Area: 20455 m²

Year: 2012



Section SN

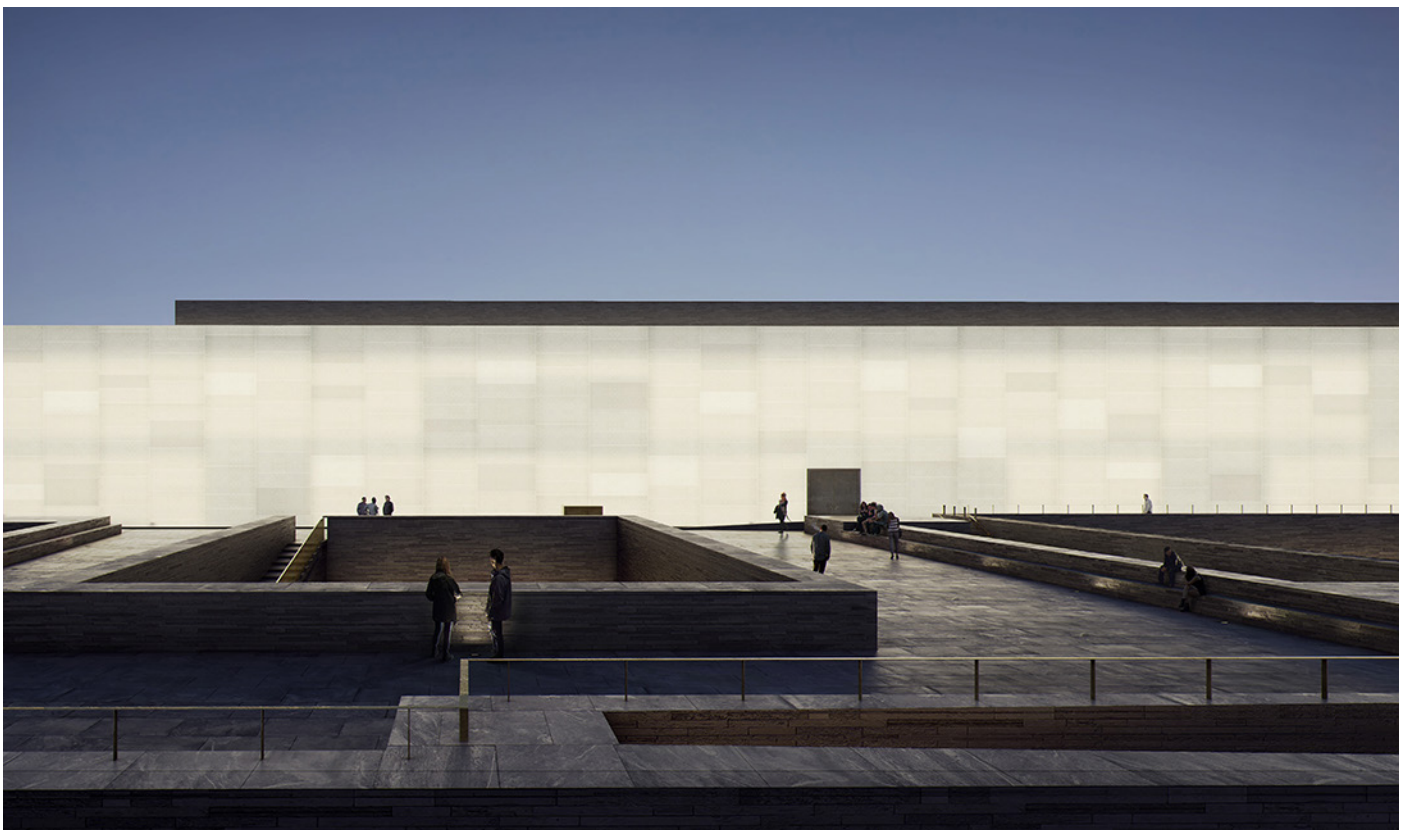
National Museum

Program: Museum

Architect: Kleihues + Schuwerk

Area: 54 600 m²

Year: 2021



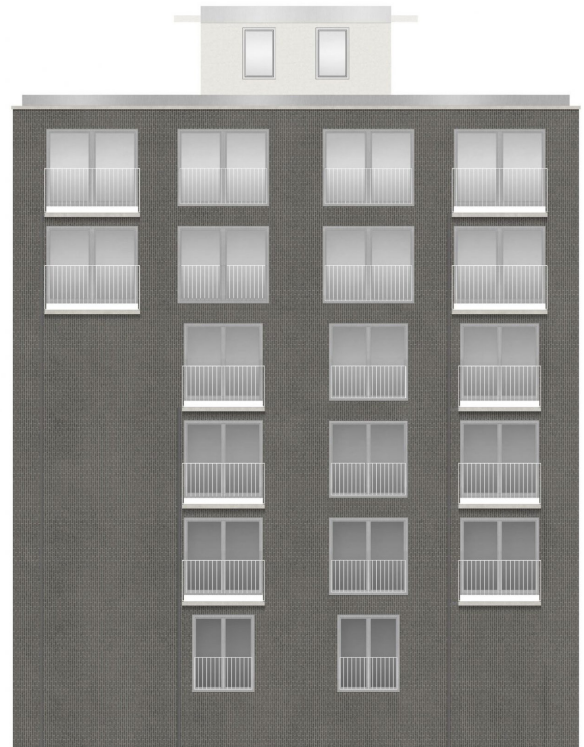
Venezia biennale 2018 - The Facade Is The Window To The Soul Of Architecture

Architect: Caruso St John

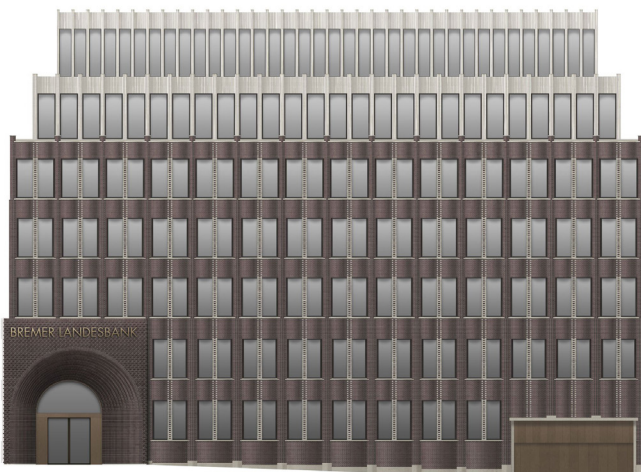
"In response to the Biennale's theme of Freespace, Caruso St John Architects put together an exhibition that celebrates the historical richness and social generosity of the façade. Whether a building is public or private, whatever its intended use, its façades have the responsibility to make a positive contribution to the public realm and should have the capacity to emotionally affect people who may only have a fleeting relationship to the building. Good buildings, like Georgian townhouses and Victorian warehouses, can accommodate new uses over time, and while programme can be fleeting, it is the physical presence and the image of these buildings that underpin the formation of great cities. The facade has been missing from the architectural discourse for too long."



Apartment building_Biel-Benken_CH_2014-2020



Apartment building_Falkenstrasse_Munich_DE



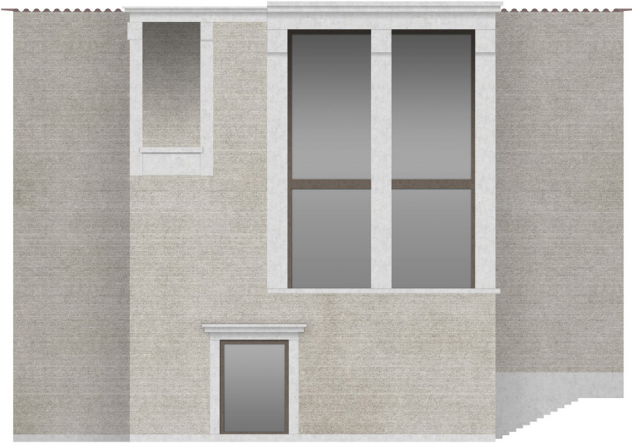
Bremer Landesbank Headquarters_Bremen_DE_2011



Apartment building_Welfenstrasse_Munich_DE

Venezia biennale 2018 - The Facade Is The Window To The Soul Of Architecture

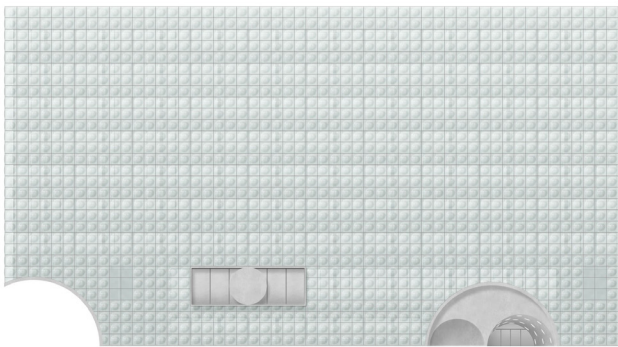
Architect: Caruso St John



City Hall_Pully_CH_2017



House in the Mountains_Tschierschen_CH_2016



Department of Biomedicine_Basel University_CH



Mixed use building_Europaallee_Zurich_CH_2008



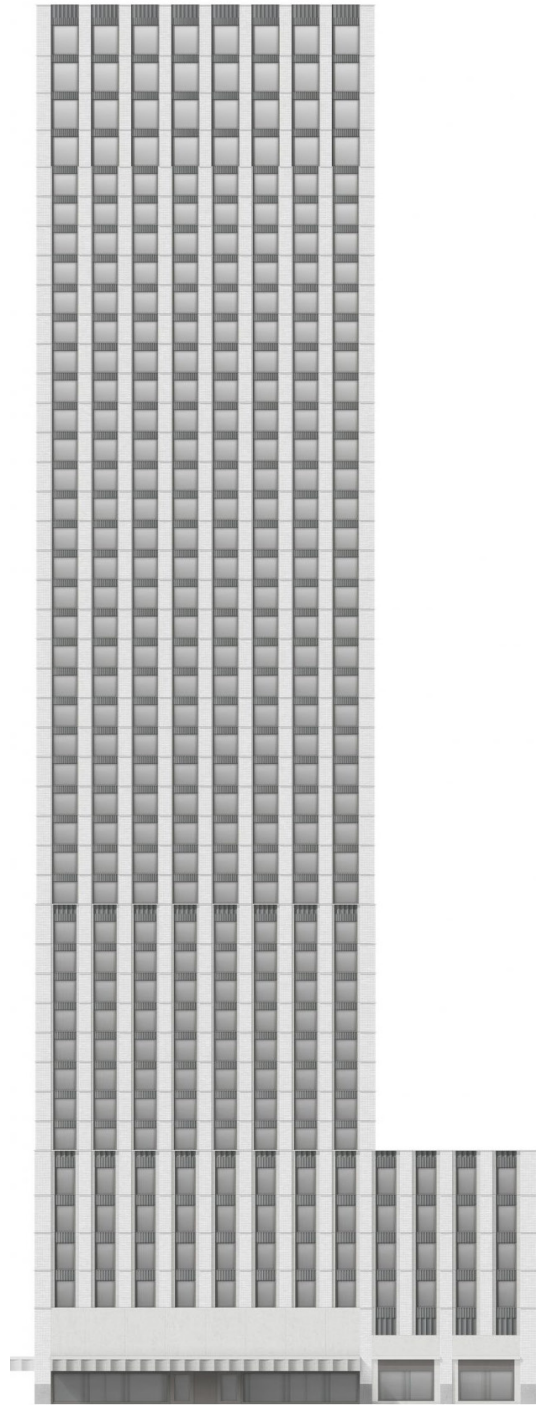
Mixed-use building_Antwerp_BE_2014-2019



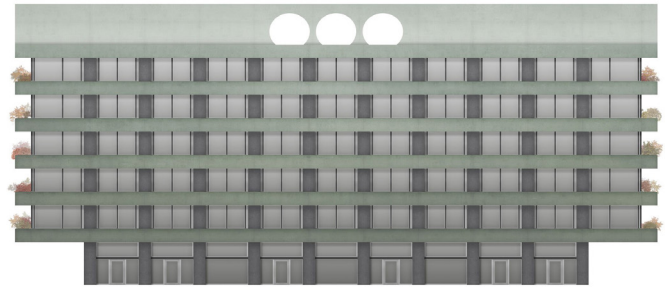
Office building_Grosser Burstah_Hamburg_DE

Venezia biennale 2018 - The Facade Is The Window To The Soul Of Architecture

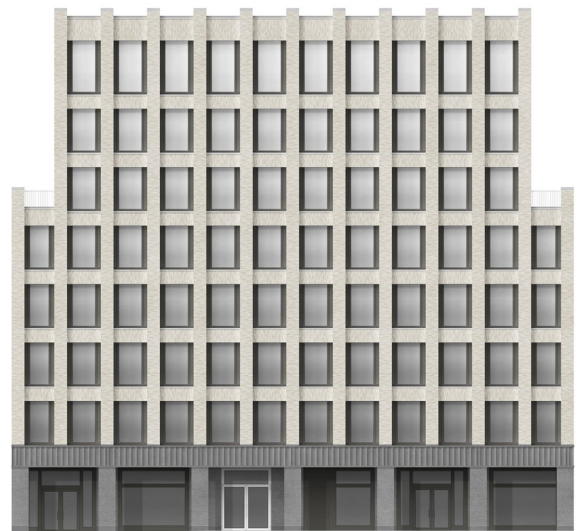
Architect: Caruso St John



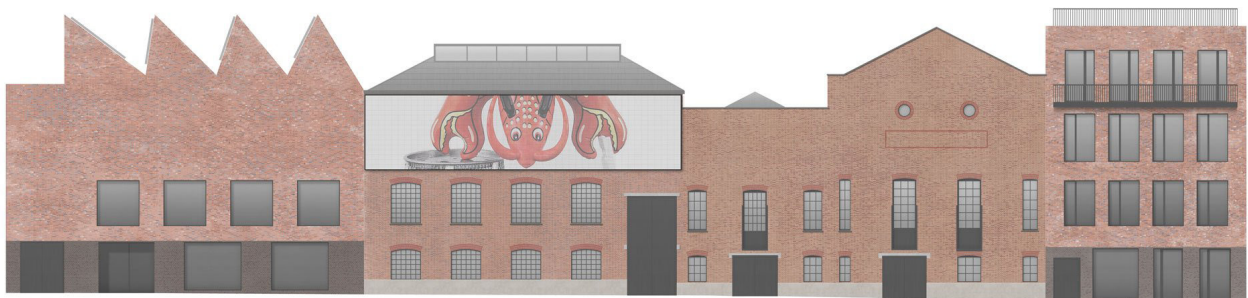
Mixed-use tower_Hardturm_Zurich_CH_2016



Office building_Escher Wyss_Zurich_CH_2017



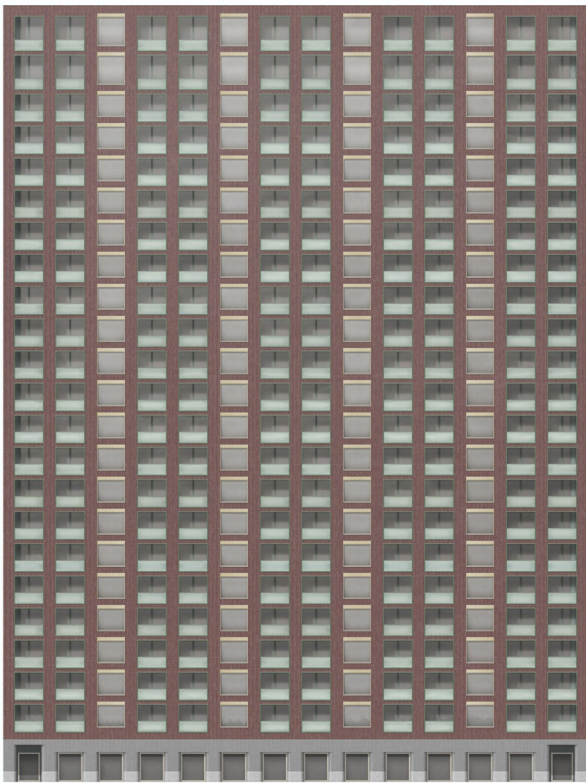
Office building_Rudolfplatz_Cologne_DE_2015



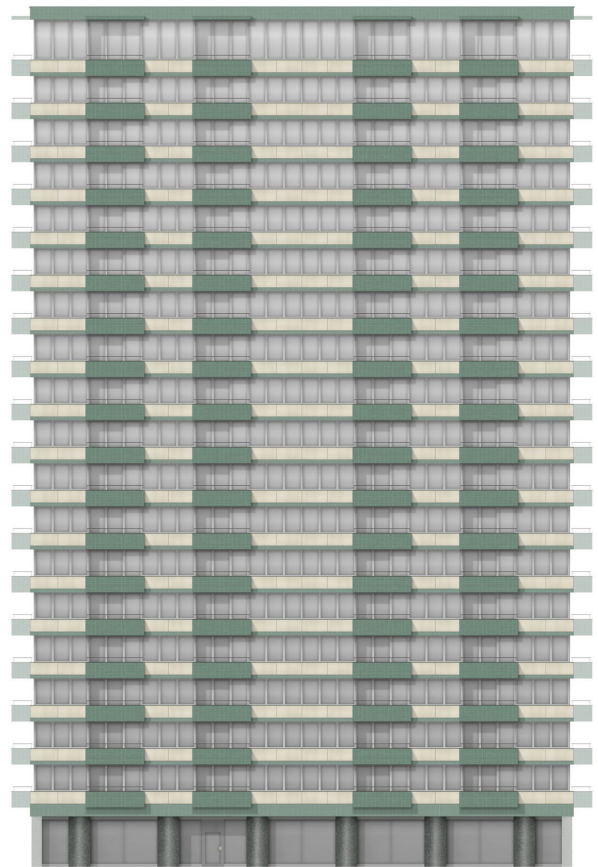
Newport Street Gallery_London_UK_2005-2015

Venezia biennale 2018 - The Facade Is The Window To The Soul Of Architecture

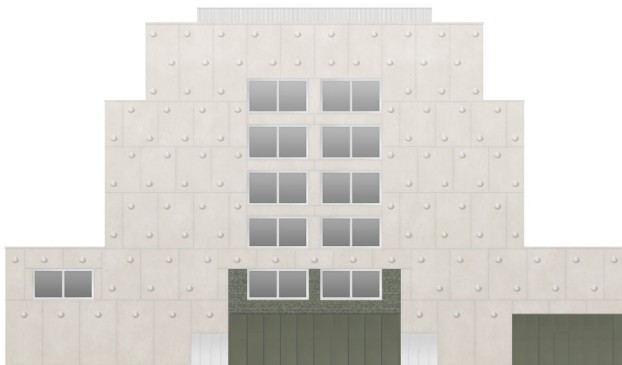
Architect: Caruso St John



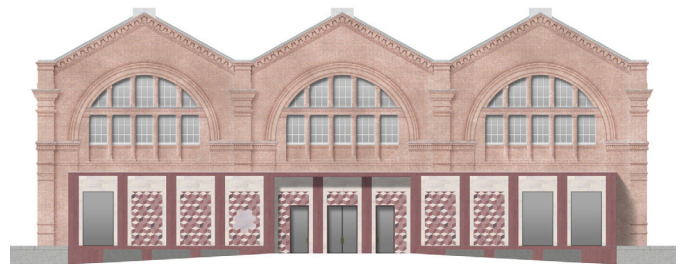
Residential tower_A_Aarau_CH_2017



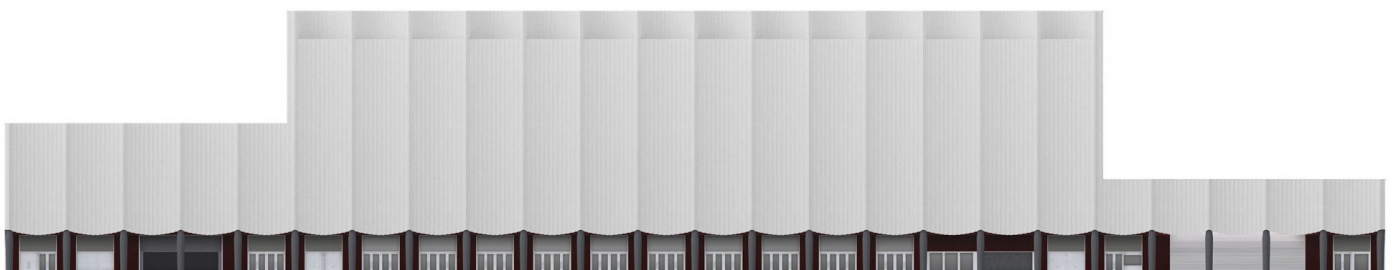
Residential tower_D_Aarau_CH_2017



St Jakob Stiftung_Mixed-use building_Zurich_CH



VA Museum of Childhood_London_UK_2002-2007



ZSC Lions sports arena_Zurich_CH_2012

OFFICE Kersten Geers David Van Severen



Project: MAISON MEDIA HUIS

Site: Brussels, BE

Year: 2017

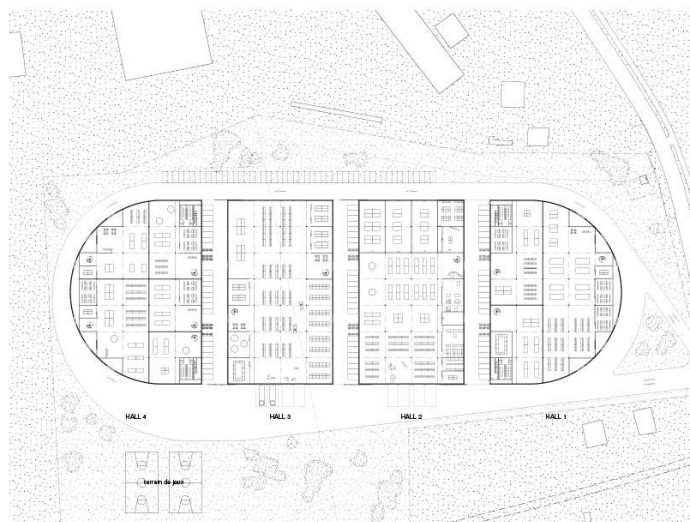


Project: LES HALLES GÉNÉREUSES

Site: Bordeaux, FR

Year: 2018-

Area: 20 000 m²



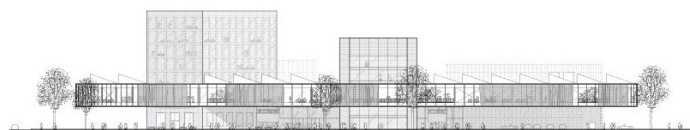
"The proportions of the building become territorial."



Project: CAMPUS RTS

Site: Lausanne, CH

Year: 2014-



OFFICE Kersten Geers David Van Severen



"This office building, housing the West Flanders Chamber of Commerce, stands like a villa in the landscape of the urbanised edge of Kortrijk. The representative façade on the street side, completely of glass, displays the organisation's operations like a billboard in a giant concrete cabinet."

Project: CHAMBER OF COMMERCE

Site: Kortrijk, BE

Year: 2008- 2011



"This building is the most extreme and simple incarnation of a big box: a building envelope removed from anything even vaguely referring to function—a true building without content... It sometimes appears box-like, sometimes a perforated plane."

Project: DRYING HALL

Site: Hulshout, BE

Year: 2011- 2013



"It is the only common building of the allotment of private companies and thus needs to express that position. For that reason the building is at once very 'box-like' and archetypal but also elegant and refined, to set an example of economy of means and public engagement. The project is a simple and spartan box, demonstrating a refined use of standard industrial building elements, such as prefabricated concrete walls, aluminium cladding and cupboard-like office spaces."

Project: INCUBATOR

Site: Waregem, BE

Year: 2013- 2016

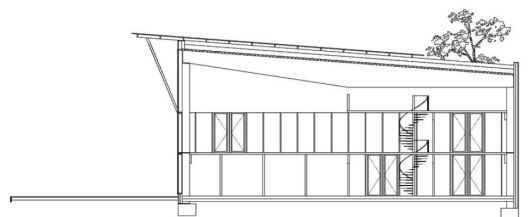
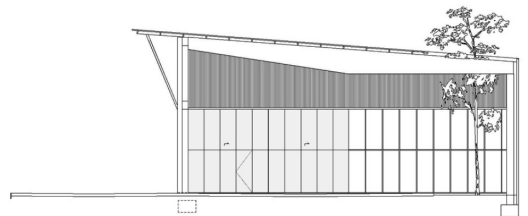
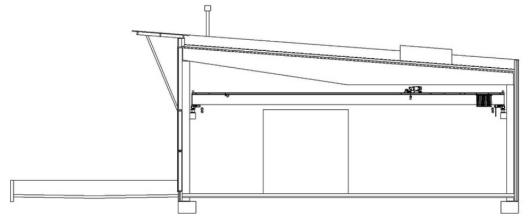
LAB15

Program: Factory

Architect: GAFPA

Area: unknown

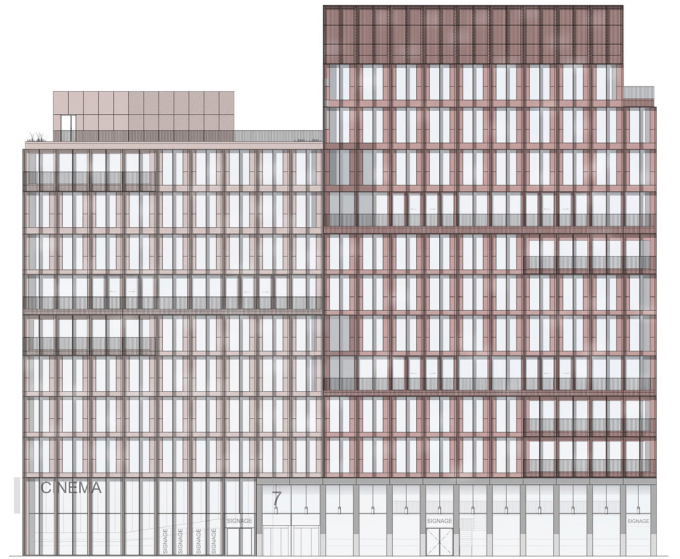
Year: 2018



MORRIS+COMPANY



Project: R7
Site: Kings Cross, UK
Year: 2017
Area: 22900 m²



Project: Wildernesse Restaurant
Site: Sevenoaks, UK
Year: 2018
Area: 224 m²



Project: Shepherds Building
Site: London, UK
Year: 2013
Area: 10,000 m²



Project: The Loom
Site: London, UK
Year: 2016
Area: 10,219 m²

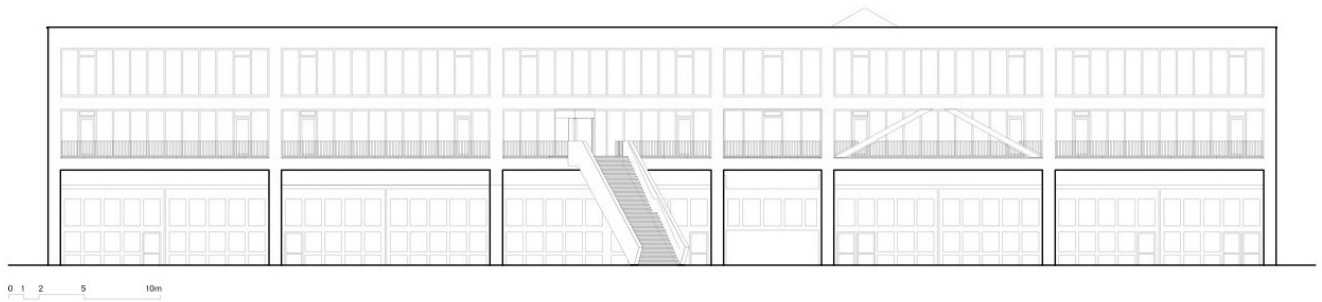
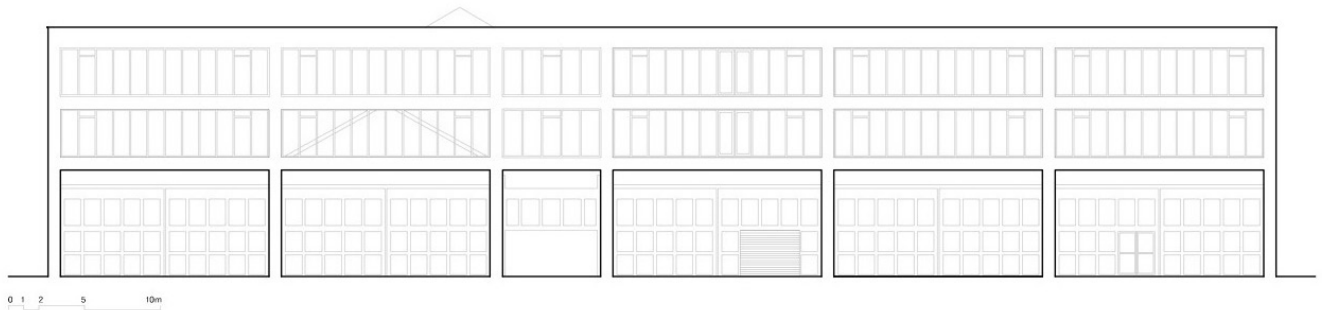
The Platform Office Building

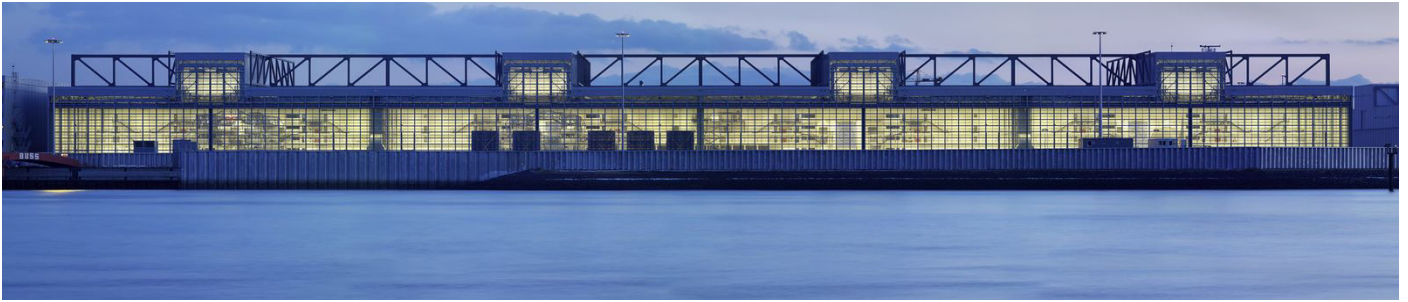
Program: Office, warehouse

Architect: Space Encounters

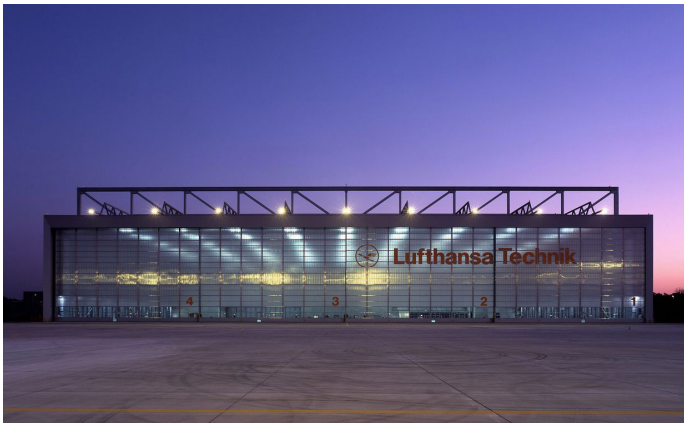
Area: 5270 m²

Year: 2019

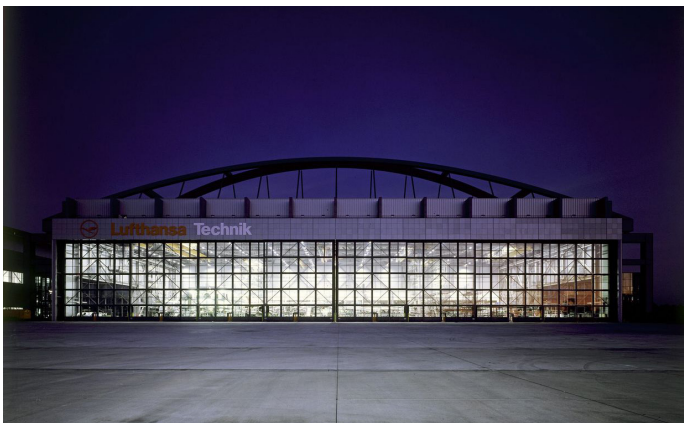




Project: Airbus A380 Interior Equipment Assembly Hall
Site: Hamburg, Germany
Year: 2005
Area: 58,890 m²



Project: A380 Lufthansa Maintenance Hangar
Site: Frankfurt, Germany
Year: 2008
Volume: 1,300,000 m³



Project: Jumbo Maintenance Hangar
Site: Hamburg, Germany
Year: 1992
Volume: 473,850 m³

Herzog & de Meuron

RICOLA KRÄUTERZENTRUM

Project Year: 2014

Size: 11 meters high, 111 meters long, and 30 meters wide. 3,218 sqm footprint. Gross Floor Area (GF): 4,800sqm. Number of Levels: 3.

Loadbearing structure: Prefabricated concrete. Column and lintel system.

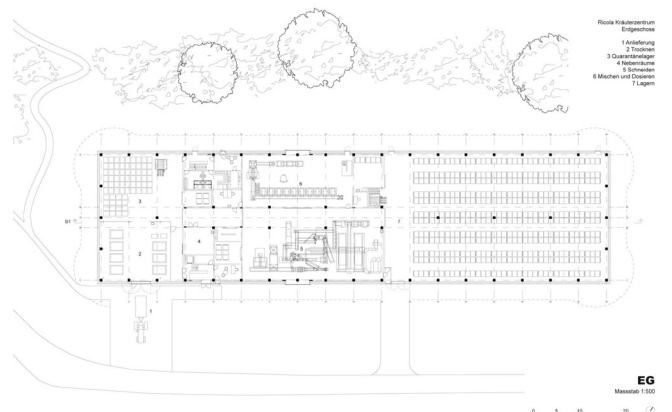
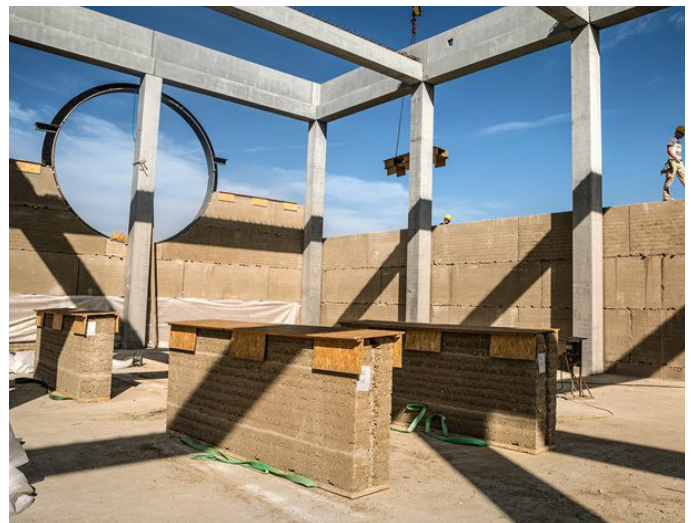
Façade: Prefabricated, monolithic blocks of rammed earth. Manufactured in a nearby factory. The façade is self-supporting and simply linked to the concrete loadbearing structure of the interior. 666 blocks in total. 45 cm thick.

Construction time: 16 months

Relation to site: The new Kräuterzentrum (herb center) is situated like an erratic block in the midst of a landscape dotted with conventional industrial buildings. Its elongated shape echoes the pathways and the hedges that have long been a distinctive feature of this area. The length of the building also reflects the steps involved in the industrial processing of herbs, from drying and cutting to blending and storing. The Kräuterzentrum is built largely out of locally sourced earth; it is like a geometrical segment of landscape with its dimensions and archaic impact heightened by the radical choice of material.

General: The center will clean, dry, cut, store and mix 1,400,000 kilograms of fresh herbs every year at a central location to create the unique Ricola herb blend that is the vital ingredient of all Ricola products. The sustainable construction of the Kräuterzentrum is underlined by the energy-friendly heating system and the rammed earth elements used for the façade, which help to stabilize the temperature and humidity levels inside the building.

"Every detail is addressed with great care: What does the surface of the walls look like? How do the walls sit on their foundations? How do they end when they reach the roof? How are the windows inserted? Can the material be felt from inside? Those are the things that count." Pierre de Meuron



Herzog & de Meuron

STORAGE BUILDING

Location: Baselstrasse 91, Laufen – Switzerland

Project Year: 1986–1987

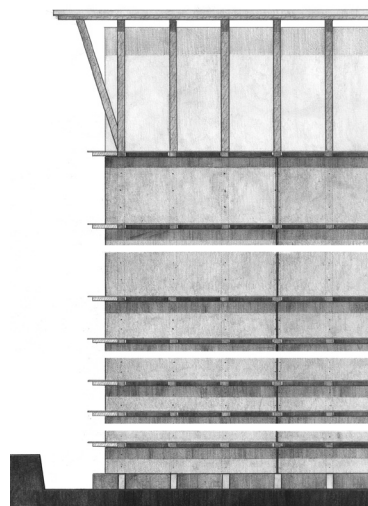
Size: 60meters long, 26meters wide and 17meters high. Building Area: 2,900sqm

Loadbearing structure: Steel frames

Façade: Fiber cement. The fiber cement paneling was secured to a series of structural ribs that protrude from the framework, which is cast on solid rock foundations. Bonded timber posts were fixed to the ribs to help them bear the weight of the outer cladding. They protect the panels of insulation placed behind them. The horizontal panels were bolted onto the structure and laid flat or slightly angled, increasing the width and optical weight of the warehouse as it slopes upward. These untreated Eternit panels — the industry-standard fiber cement material pioneered by EQUITONE — are larger at the top of the building than the bottom. They are stacked in three zones of five layers that measure 1.38 feet, 2.76 feet and 4.13 feet, respectively, thus resulting in a “shuttered” façade that disorients the viewer and looks as though it could break apart or collapse at the slightest touch.

Relation to site: A visual references are made to the traditional stacking of sawn timber boards around the numerous saw mills of the area, as well as to the limestone quarry within which the storage building sits. The design also gives a little nod to the stacks of cardboard boxes inside the facility

At the same time, the architects undermine the building’s visual unity. On approaching the warehouse, one sees above all the single elements that have gone into creating the façade and its overall composition. The monolithic, almost menacing character of the building fades away. The façade reveals how it was made.



Herzog & de Meuron

PACKING AND DISTRIBUTION BUILDING

Location: Mulhouse, France

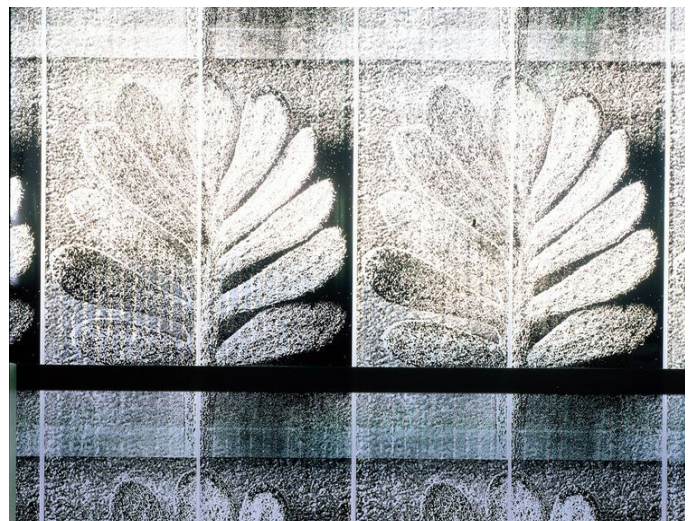
Project Year: 1993

Size: 60 meters long, 30 meters wide, and 8 meters high. 2,760sqm

Loadbearing structure: Steel

Façade: Polycarbonate panels with print. The short sides of the factory building are each closed by a black concrete wall. Water from the roof runs down over these black concrete walls and trickles into a deep bed of Alsatian gravel. The water running down the walls forms a fine film of plant life; a natural drawing ensues.

Both long walls are light walls providing the work area with constant, pleasantly filtered daylight. Light filtering occurs through printed translucent polycarbonate façade panels, a common industrial building material. Using silkscreen, these panels are printed with a repetitive plant motif based on photograph's by Karl Blossfeldt.



Bestseller Logistics Centre North

Program: Offices, warehouse, distribution

Architect: C.F. Møller Architects

Area: 48000 m²

Year: 2012



Carlsberg Innovation, Research And Development Centre

Program: Offices, laboratories, factory

Architect: S&AA

Area: 9400 m²

Year: 2014



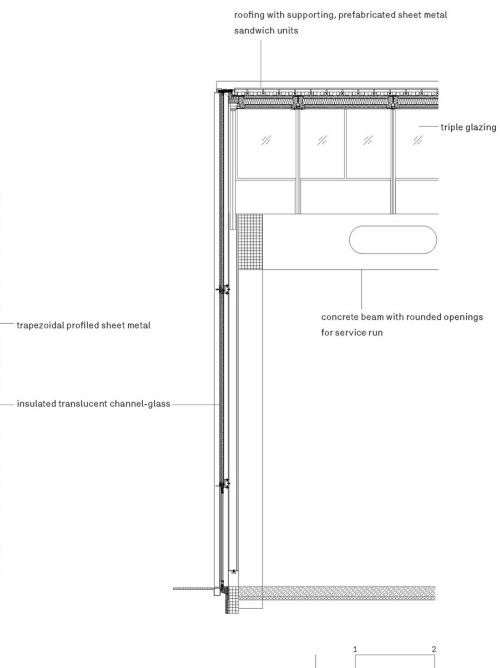
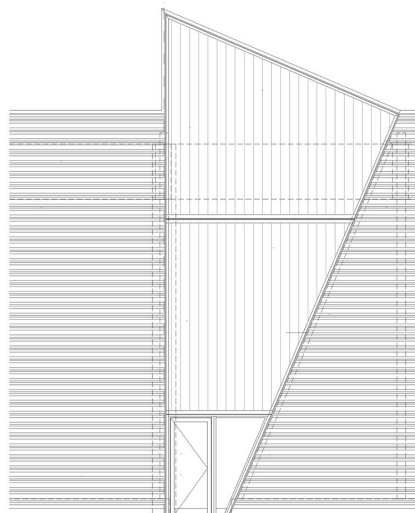
HAWE Factory Kaufbeuren

Program: Offices, factory

Architect: Barkow Leibinger

Area: 50039 m²

Year: 2014



Prologis 2030 Competition: Future Logistics Building

Program: Logistics, warehouse

Architect: O25

Area: 10000 m²

Year: 2014



BIRDS' EYE WINTER VIEW



WEST SIDE WINTER VIEW

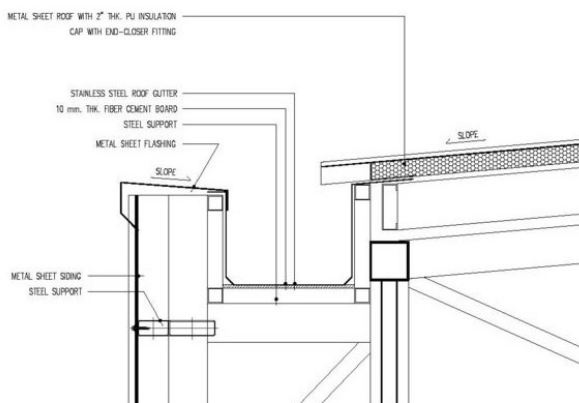
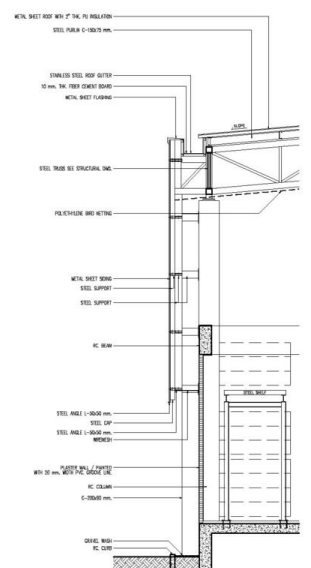
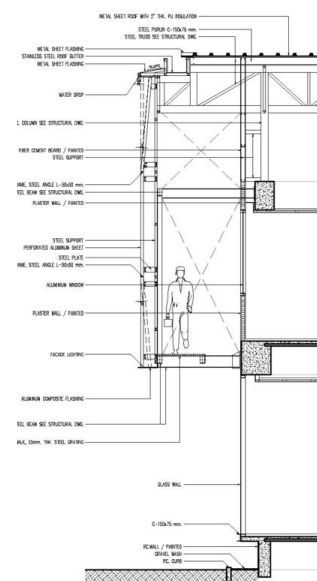
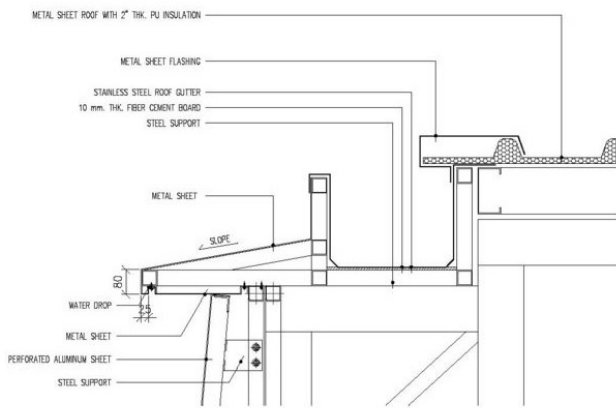
TAK Building

Program: Sale office, warehouse

Architect: AOMO

Area: 3400 m²

Year: 2017



System Warehouse

Program: Office, logistics, warehouse

Architect: Olgooco

Area: 1500 m²

Year: 2017



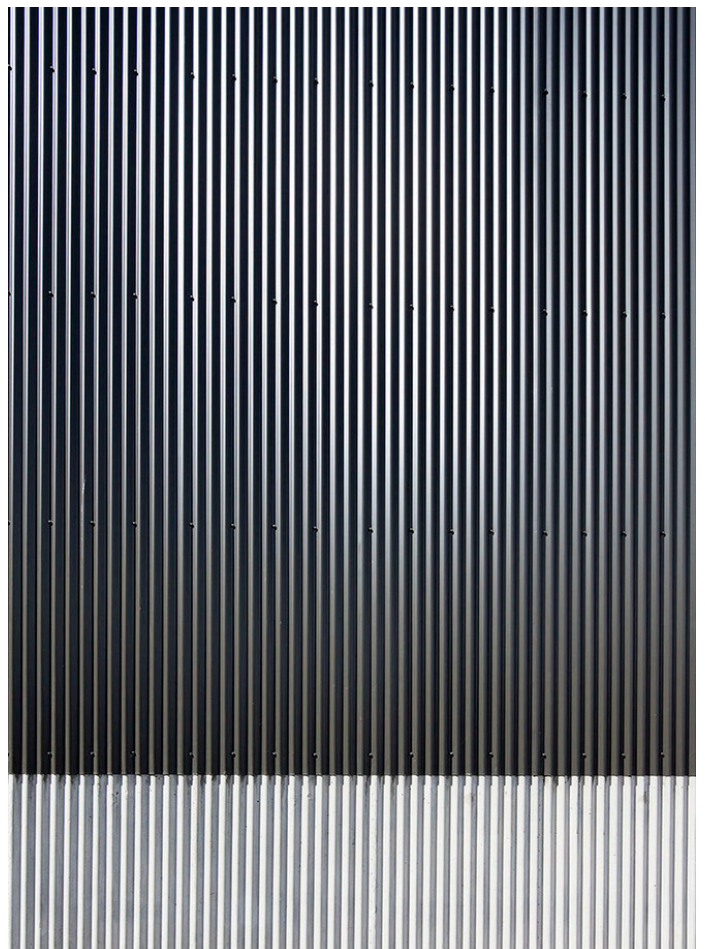
Adémia Office Building

Program: Office, Exhibition center, warehouse

Architect: João Mendes Ribeiro

Area: m²

Year: 2015



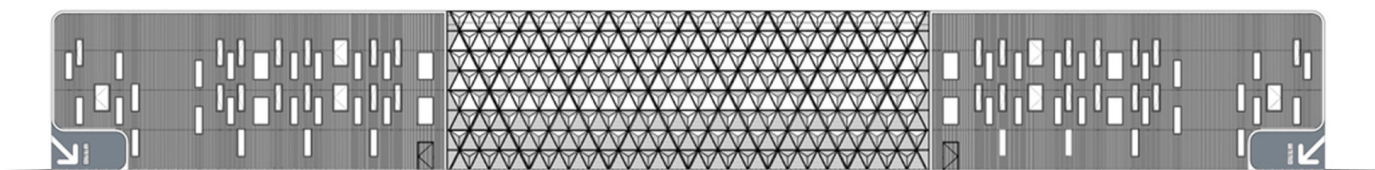
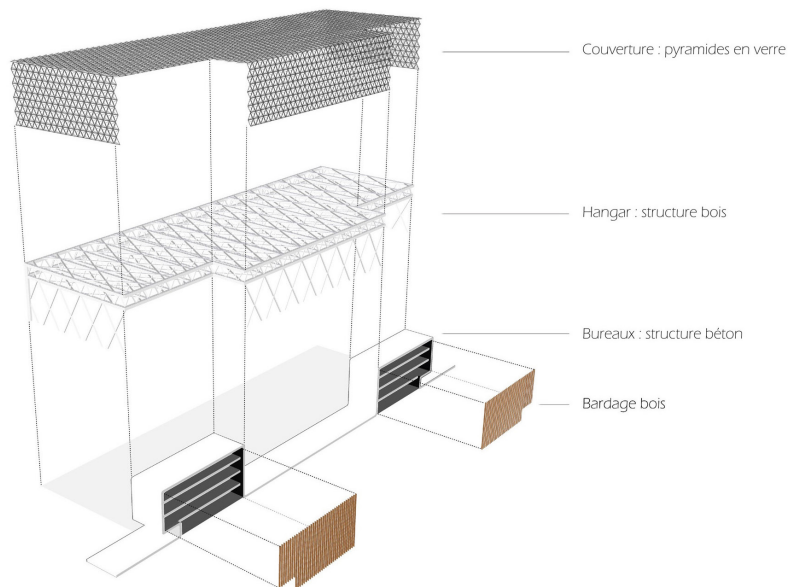
Cannes Airport

Program: Hangar

Architect: Comte & Vollenweider Architectes

Area: 4 406 m²

Year: 2013



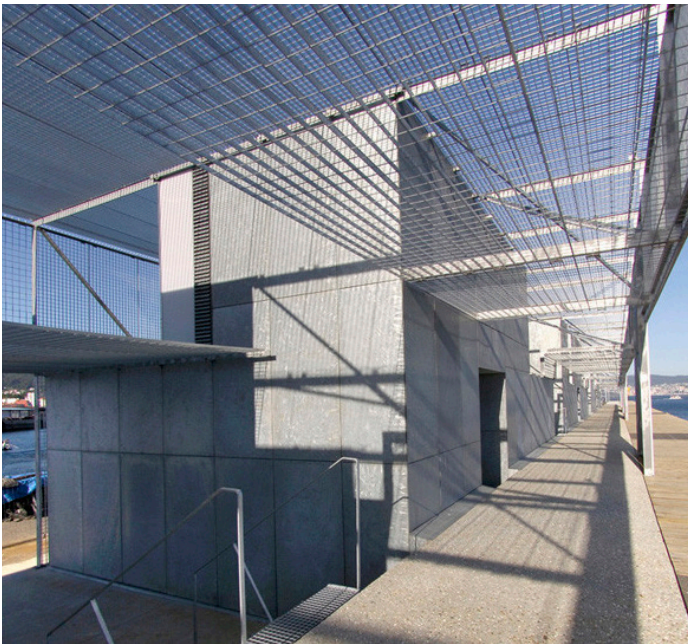
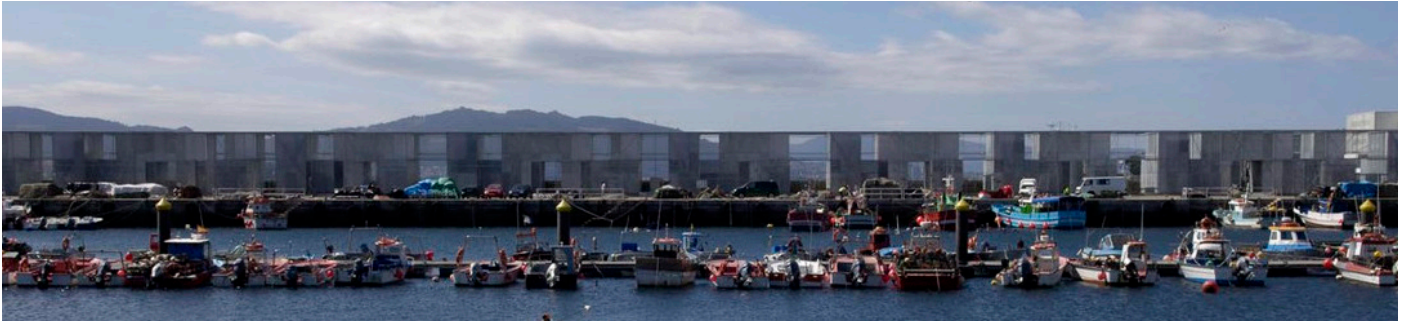
Fishermen warehouses in the port of Cangas

Program: Warehouse, production, pedestrian street

Architect: Irisarri + Piñera

Area: 897 m²

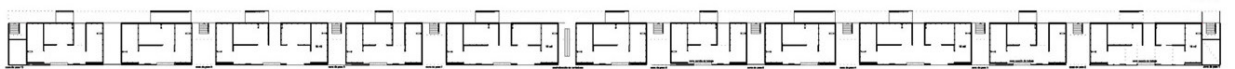
Year: 2003



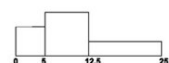
alzados desde espaldón de paseo
from bay stroll



alzado desde muelle de carga y circulación
from vehicle circulation and service acces



general floor



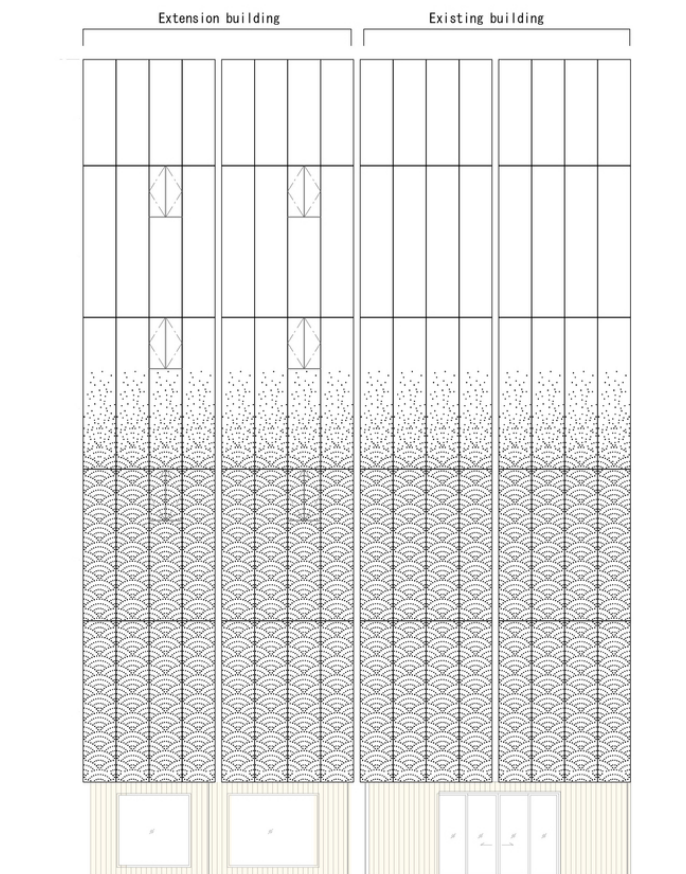
Ryogoku Yuya Edoyu Spa

Program: Spa

Architect: Kubo Tsushima Architects

Area: 802 m²

Year: 2019



ICA Miami Museum

Program: Museum

Architect: Aranguren&Gallegos Arquitectos

Area: 3450 m²

Year: 2017

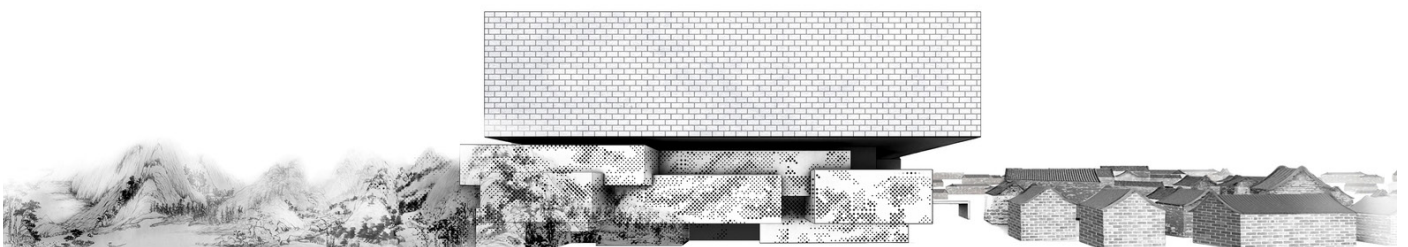
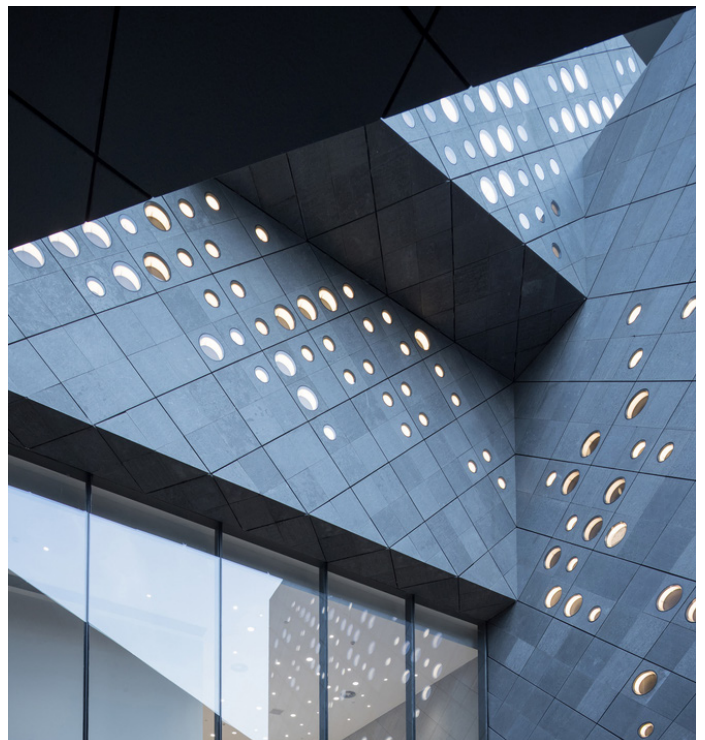


Guardian Art Center in Beijing

Program: Museum

Architect: Büro Ole Scheeren

Year: 2017



Vitsoe HQ and production building

Program: Warehouse, production, pedestrian street

Architect: Vitsoe and Martin Francis

Area: 3680 m²

Year: 2017



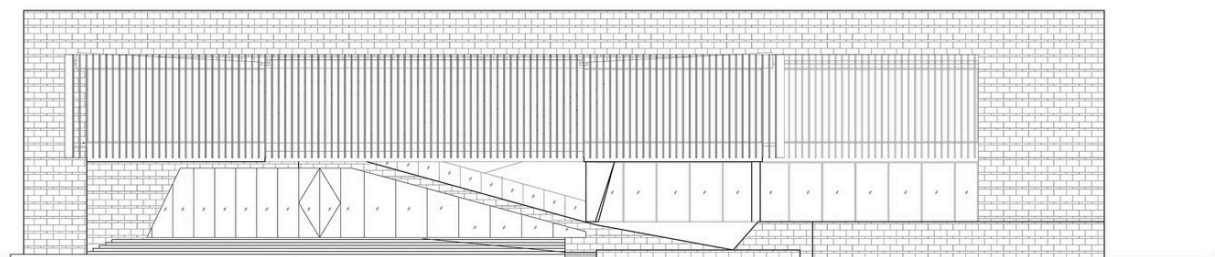
PTTEP-S1 Office

Program: Office

Architect: Office AT

Area: 2000 m²

Year: 2014



ELEVATION 1
SCALE 1:200

Paykar Bonyan Panel Factory

Program: Warehouse, factory

Architect: ARAD

Area: 10500 m²

Year: 2006



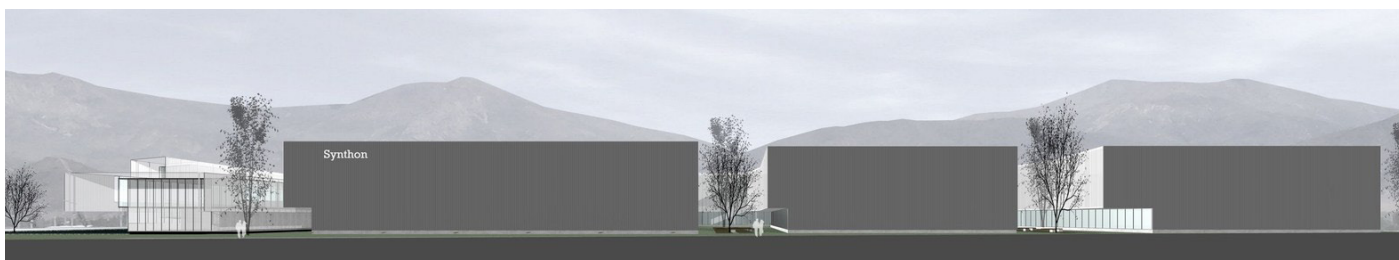
Synthon Laboratory Building

Program: Office, laboratory

Architect: GH+A & Guillermo Hevia

Area: 12000 m²

Year: 2012



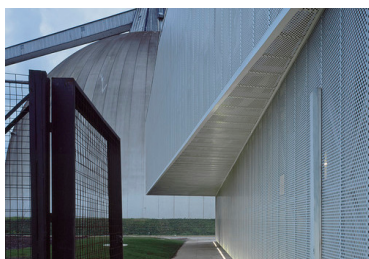
Cero K

Program: Factory

Architect: Max-A

Area: 3500 m²

Year: 2015



Ballande Meneret warehouse

Program: Logistics, warehouse

Architect: Baggio Piechaud

Area: 100000 m²

Year: 2017



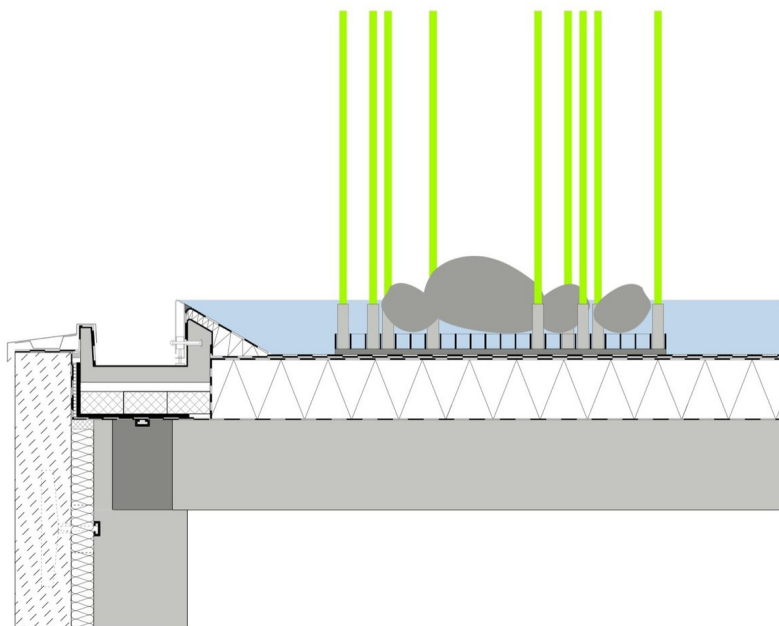
RS+Yellow Distribution Centre

Program: Logistics, warehouse

Architect: Bolles + Wilson

Area: 9158 m²

Year: 2009



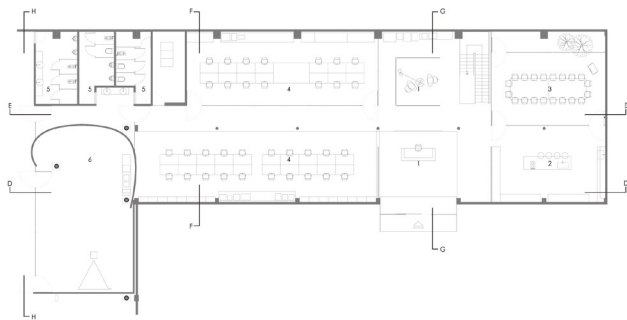
Forest Spring Enterprise

Program: Office, logistics, warehouse

Architect: Waterfrom Design

Area: Unknown

Year: 2018



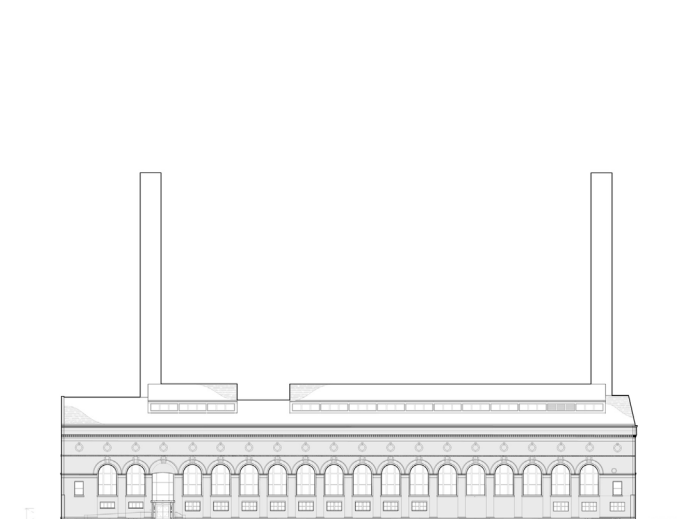
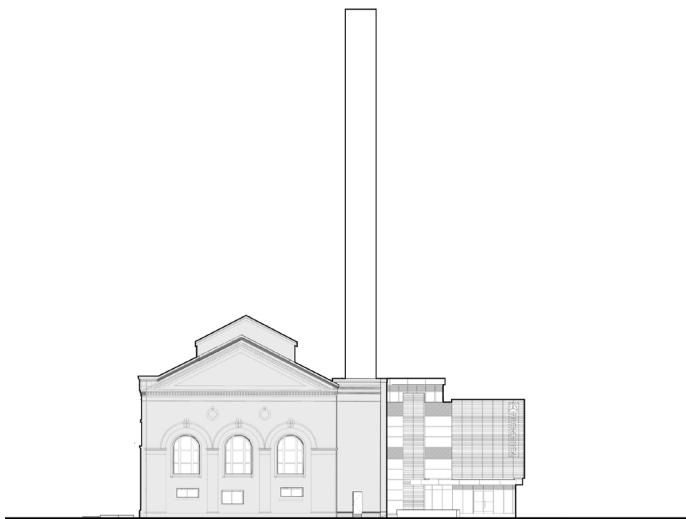
ProMedica Headquarters

Program: Office, former steam plant

Architect: HKS

Area: 102000 m²

Year: 2018



Corn factory in Mexico

Program: Office, factory, warehouse, memorial

Architect: Atelier Ars

Area: Unknown

Year: 2017



Trumpf Smart Factory

Program: High-end factory

Architect: Barkow Leibinger

Area: 5300 m²

Year: 2017



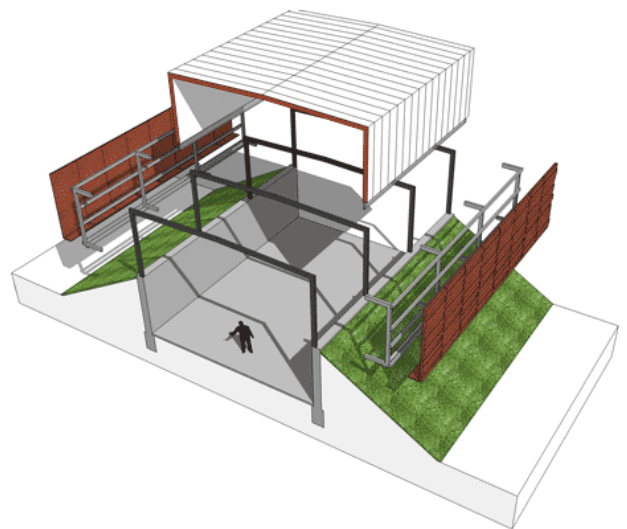
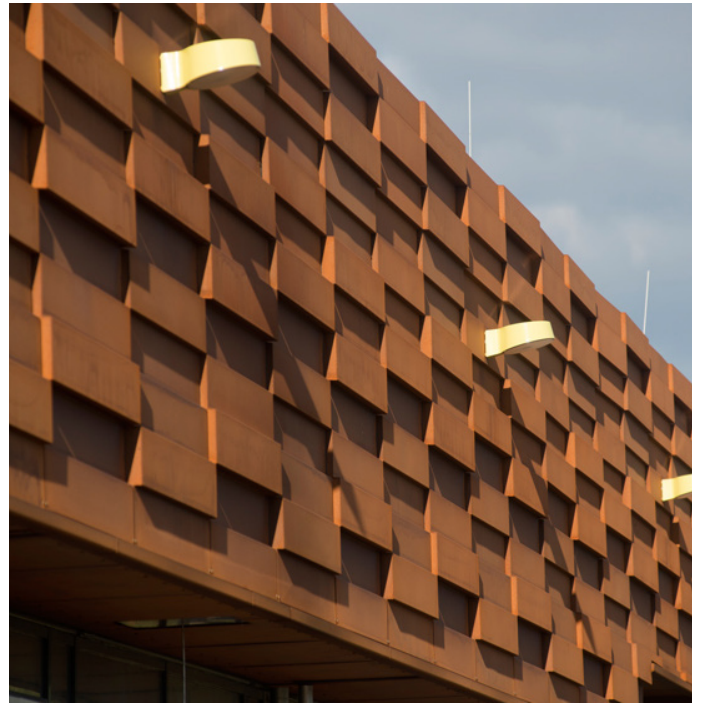
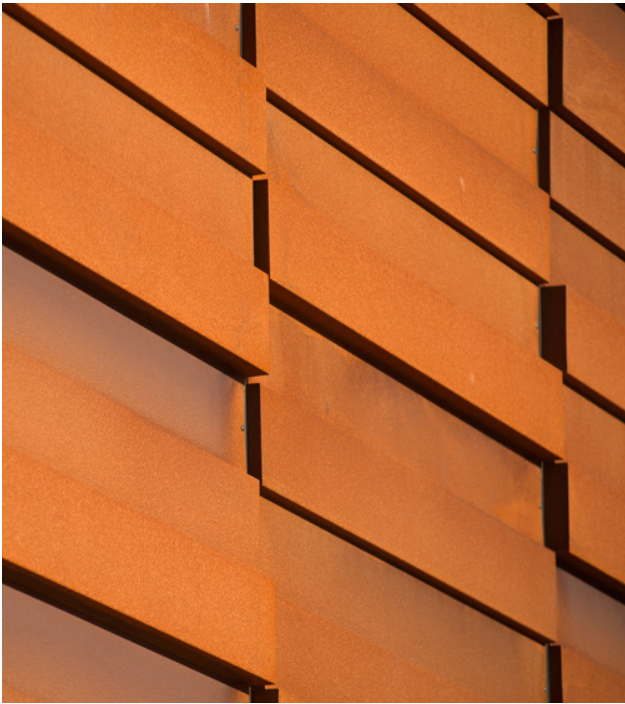
Kompressor Station Egtved

Program: Technical plant

Architect: CF Møller

Area: 5300 m²

Year: 2017



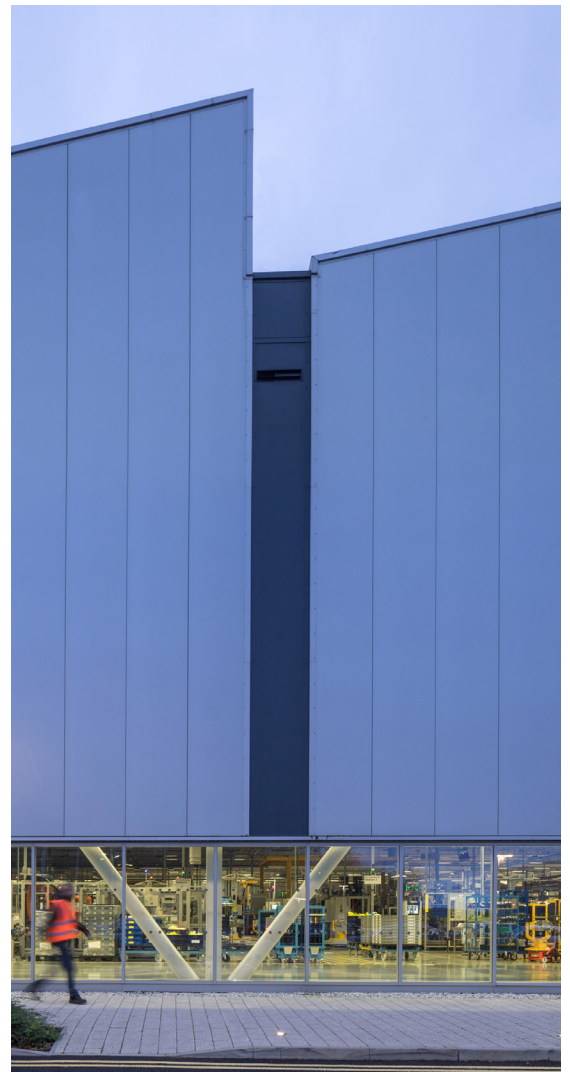
Jaguar Land Rover Factory

Program: Car manufacturing factory

Architect: Arup Associates

Area: 185,000 m²

Year: 2017



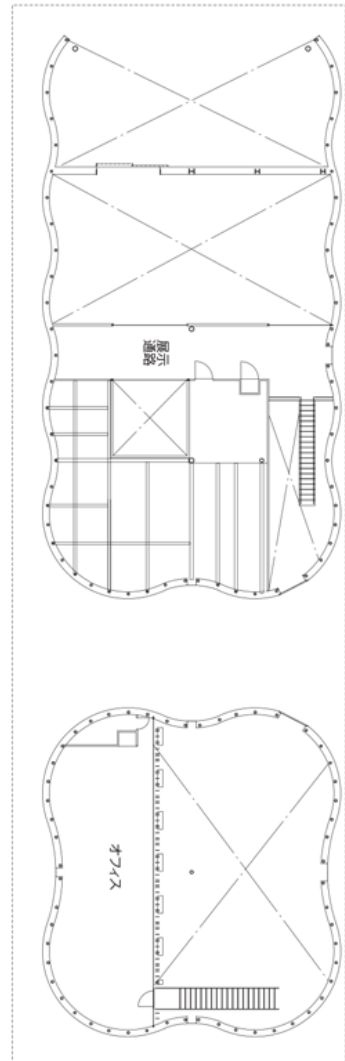
Sogokagu Design Lab

Program: Furniture showroom and production facility

Architect: Kengo Kuma

Area: A/N

Year: 2016



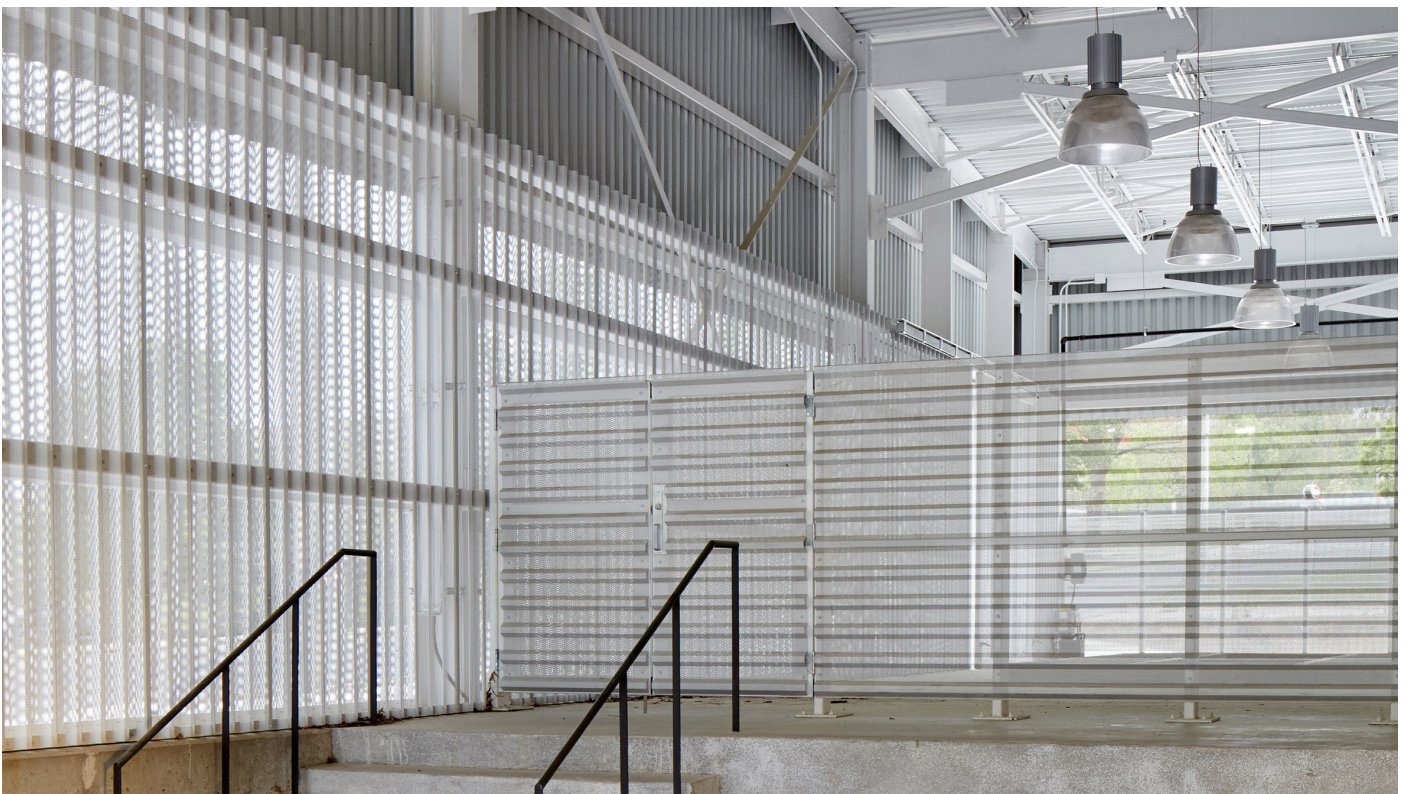
Arkansas art school

Program: Old warehouse reformed into educational facility

Architect: El Dorado and Modus Studio

Area: 3066 m²

Year: 2017



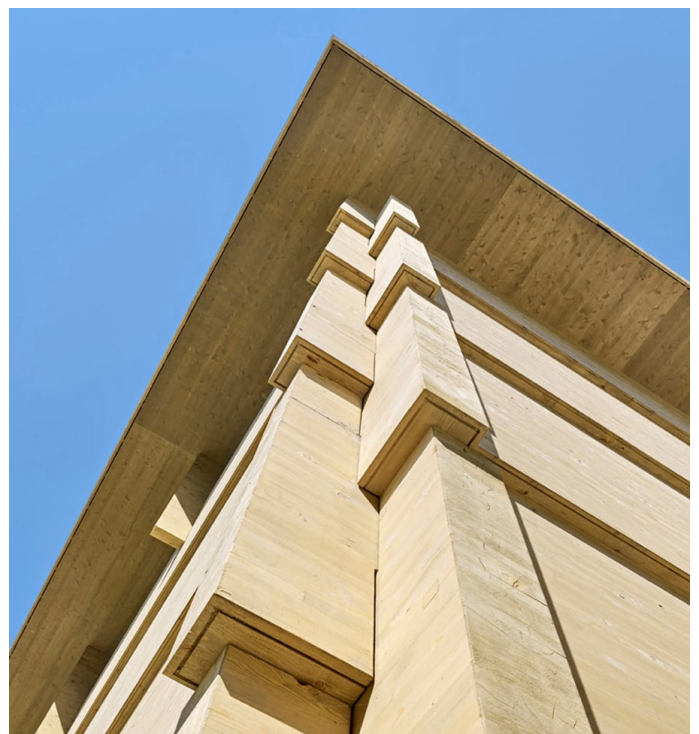
Workshop Andelfingen

Program: Garage for vehicles and machines

Architect: Rossetti + Wyss Architekten

Area: N/A

Year: 2015



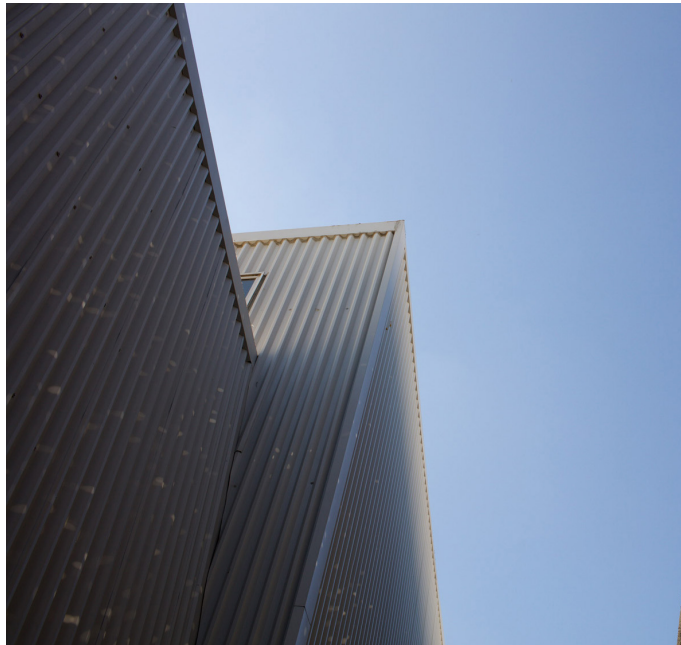
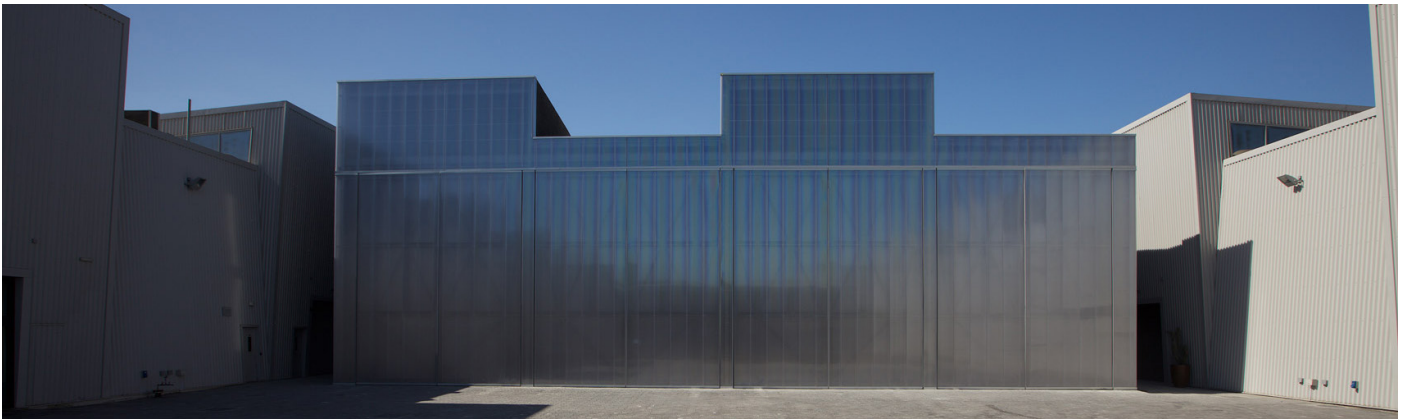
Concrete at Alserkal Avenue

Program: Events venue

Architect: OMA

Area: 1250 m²

Year: 2017



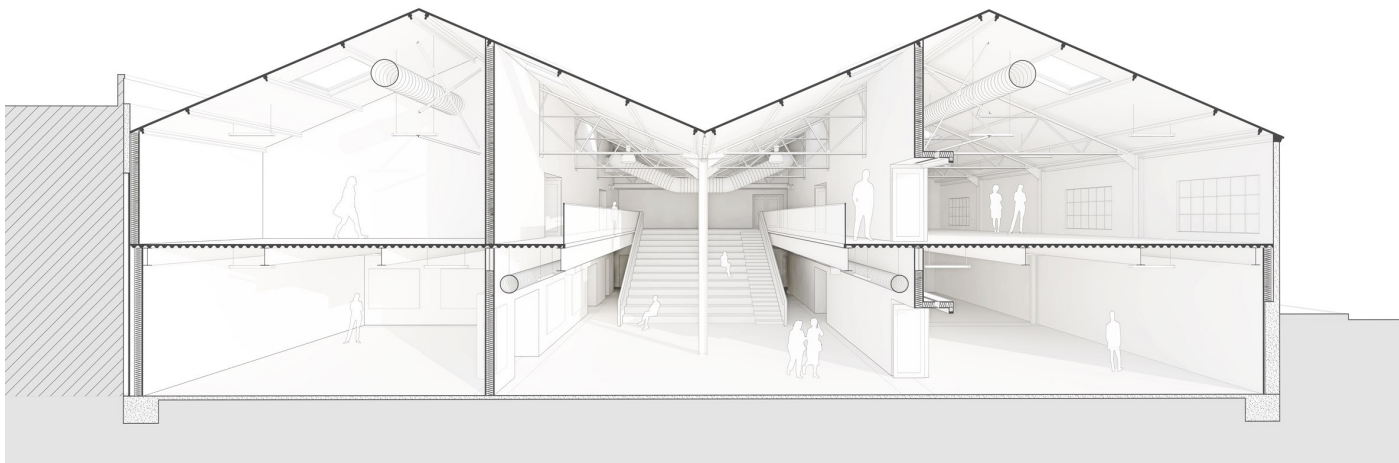
1275 Minnesota Street

Program: Art centre

Architect: Jensen Architects

Area: N/A

Year: 2016



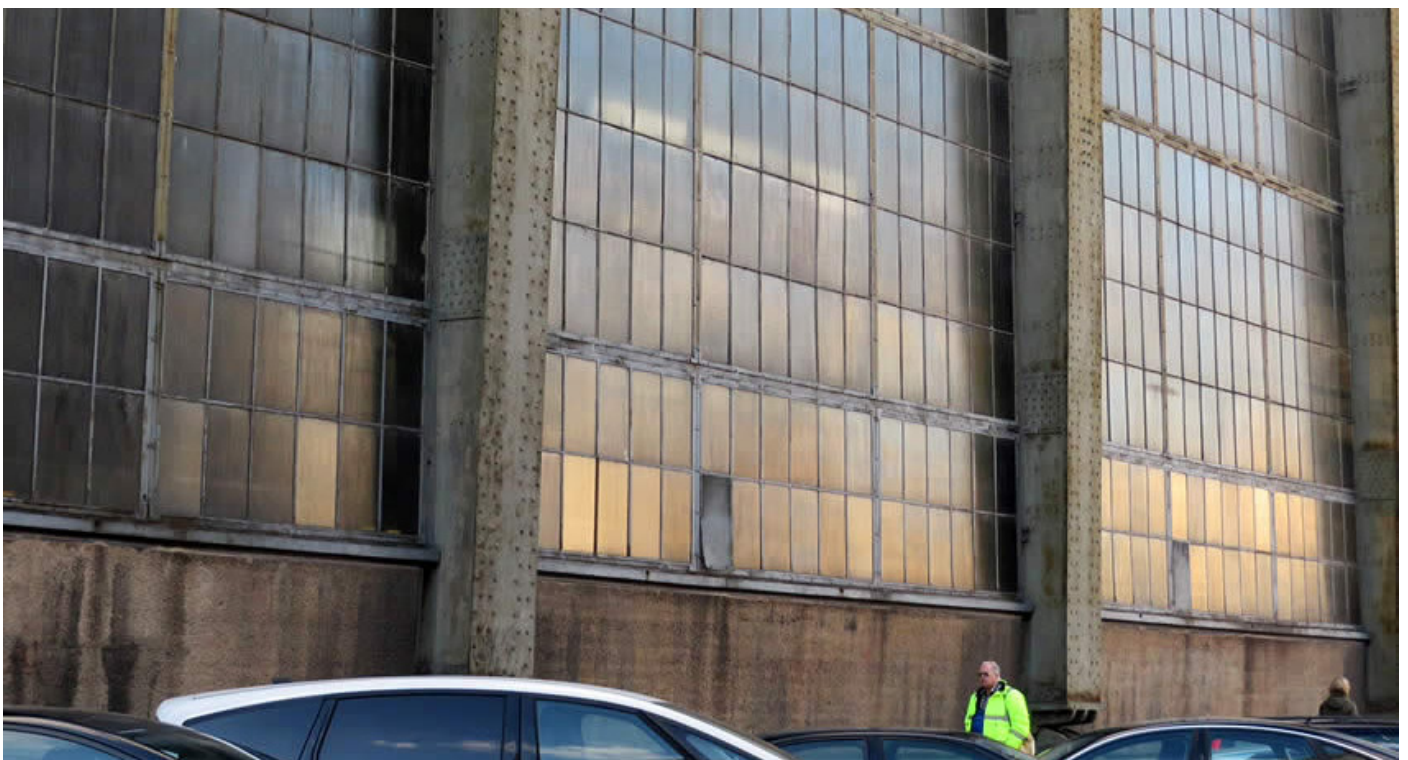
AEG turbine factory

Program: Factory

Architect: Peter Behrens

Area: 8000 m²

Year: 1909



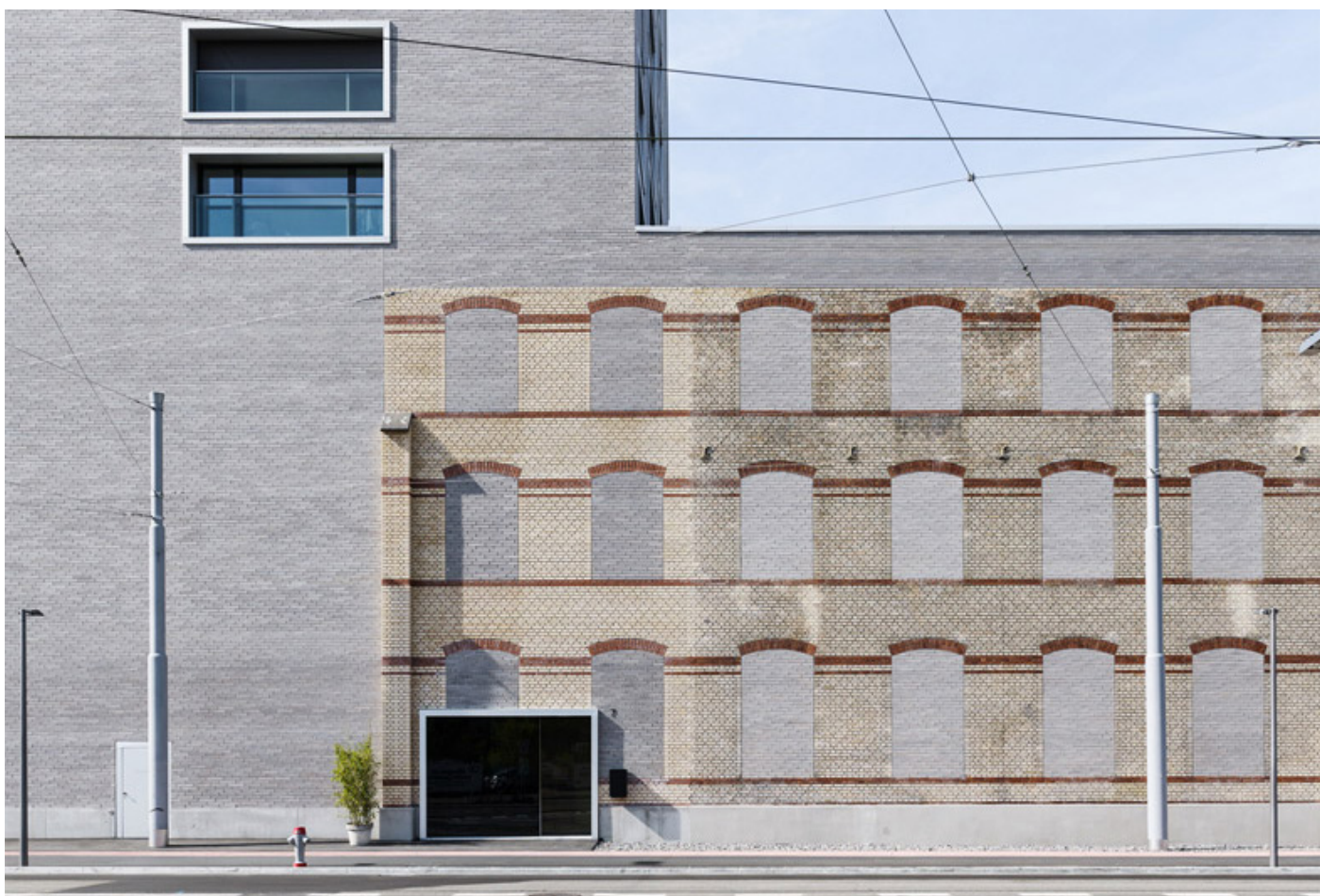
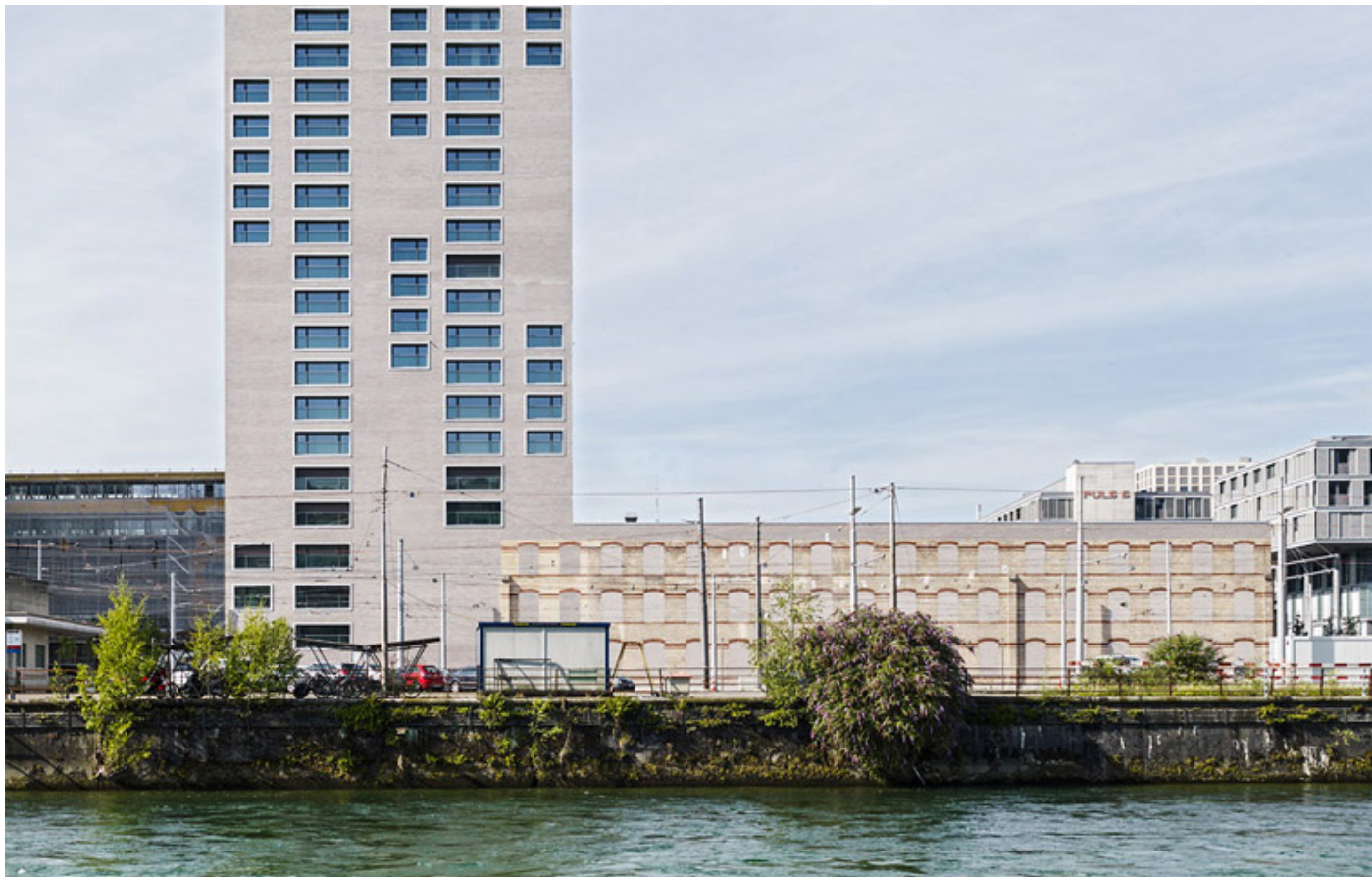
Escher Wyss quarter

Program: Performance space and apartments

Architect: E2A

Area: N/A

Year: 2015



Techno-Prisme

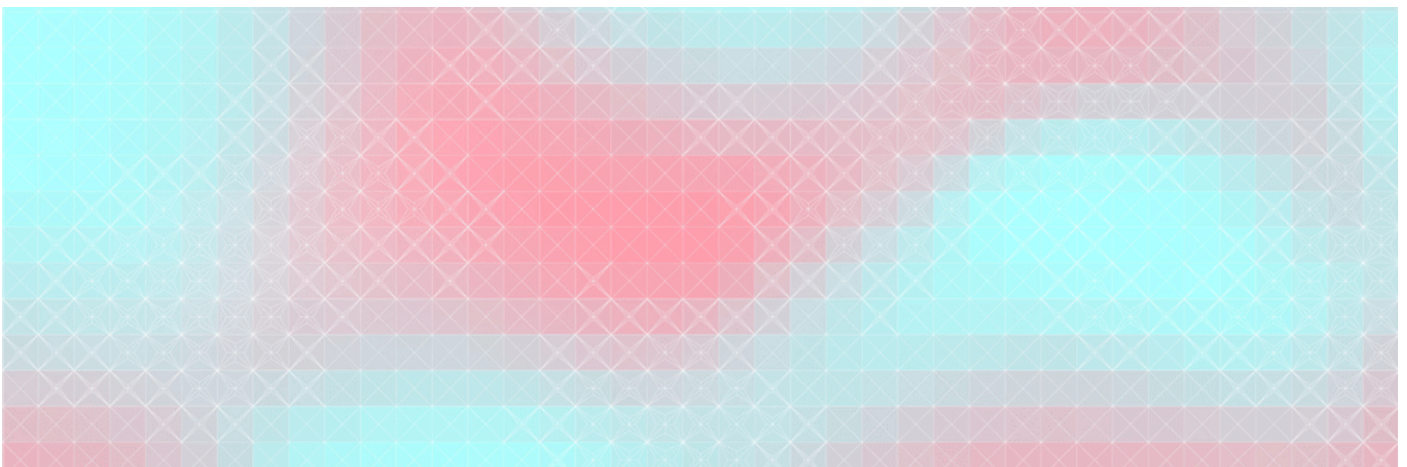
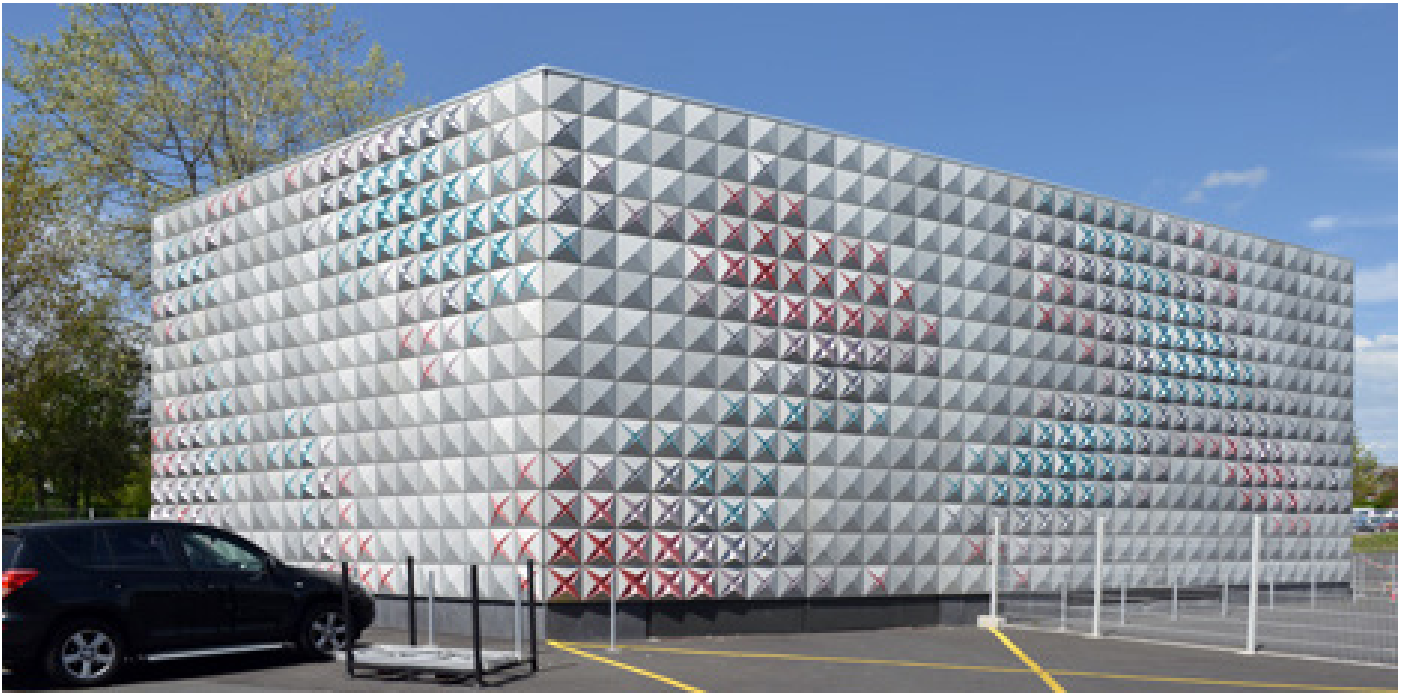
Program: Storage building

Architect: Brisac Gonzalez

Area: 500 m²

Year: 2012

Cost: 600 000 €



Le Prisme

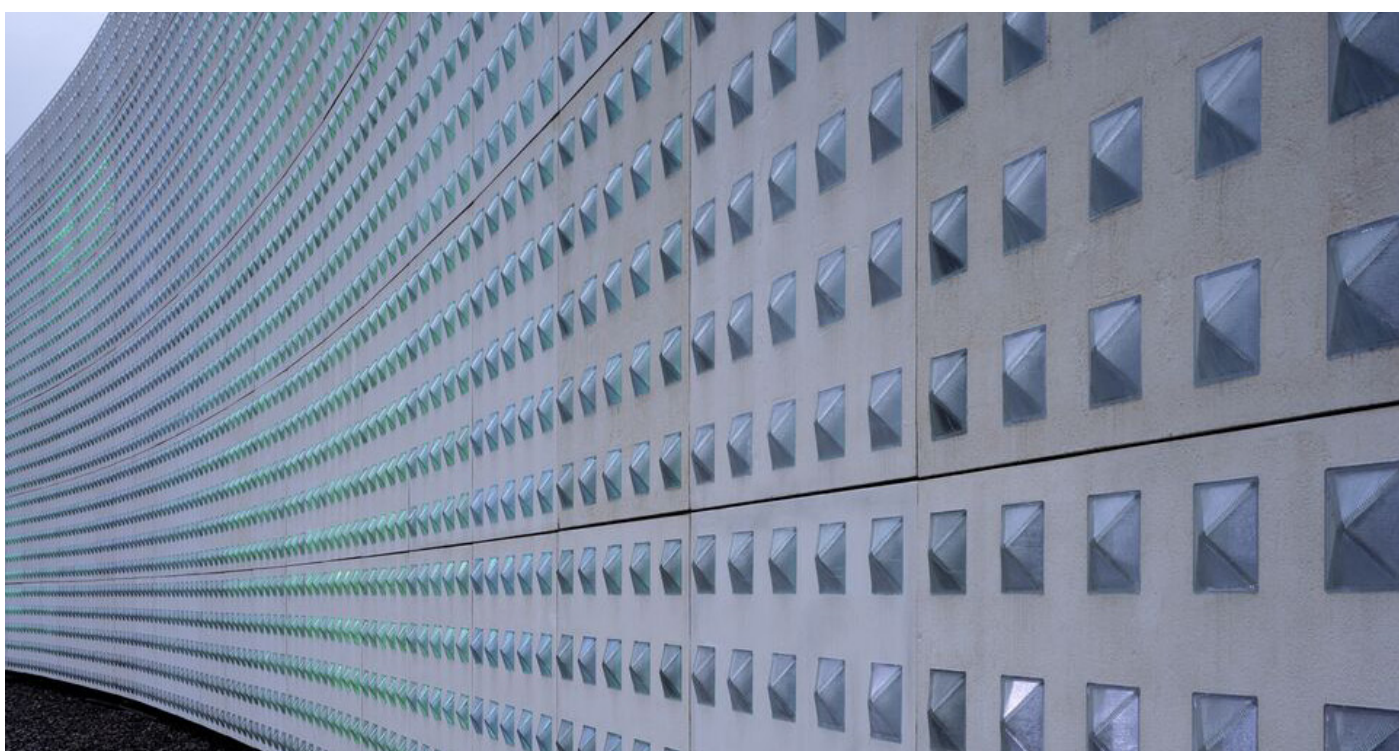
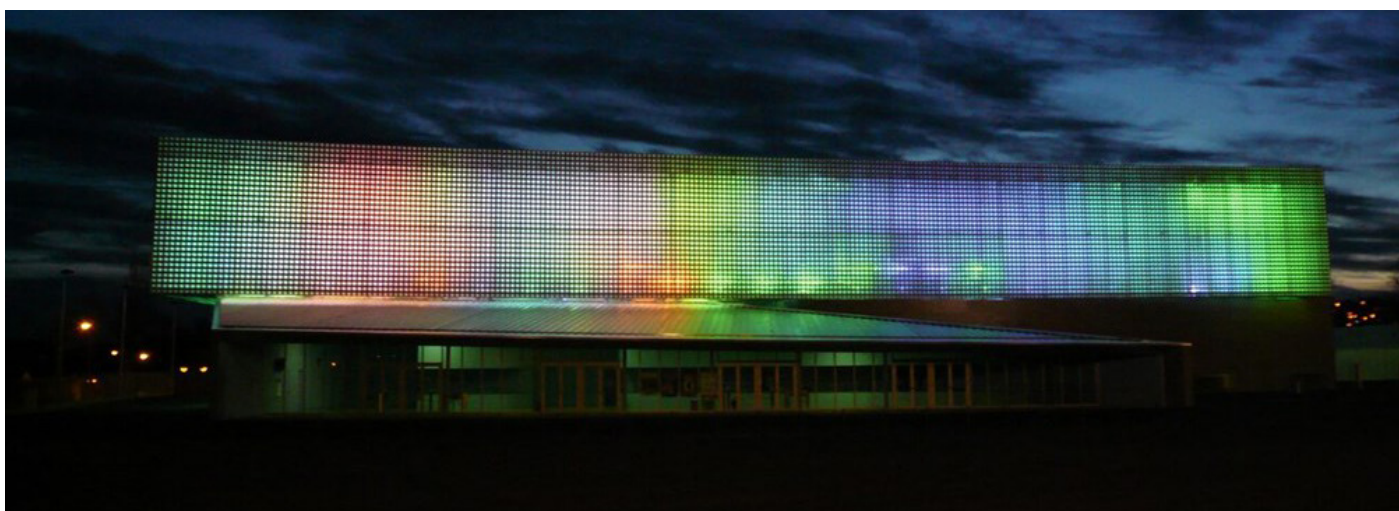
Program: multi-purpose hall for sport, trade shows and performance

Architect: Brisac Gonzalez

Area: 5 265 m²

Year: 2007

Cost: 9 165 000 €



FASA Distribution Centre

Program: Logistics and production

Architect: GH+A | Guillermo Hevia

Area: 24000 m²

Year: 2010



Cristalchile Glass Container Plant

Program: Factory, bottling plant

Architect: GH+A | Guillermo Hevia

Area: 27500 m²

Year: 2006



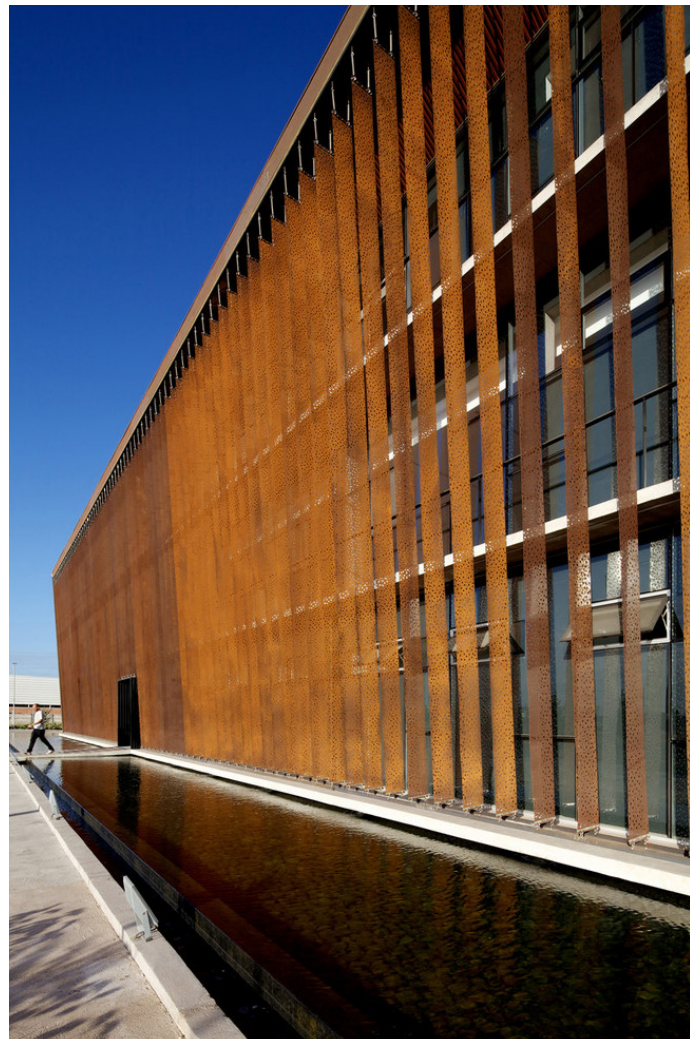
Ferretería O'Higgins Headquarters

Program: Offices, service and storage space

Architect: GH+A | Guillermo Hevia

Area: 7170 m²

Year: 2011



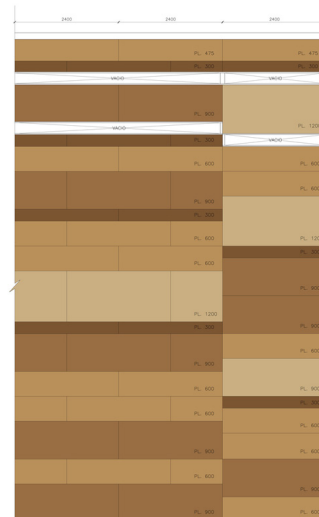
Olisur factory

Program: Factory for olive oil

Architect: GH+A | Guillermo Hevia

Area: 2800 m²

Year: 2008



Fiberline Factory

Program: Factory

Architect: KHR arkitekter

Area: 25 000 m²

Year: 2008



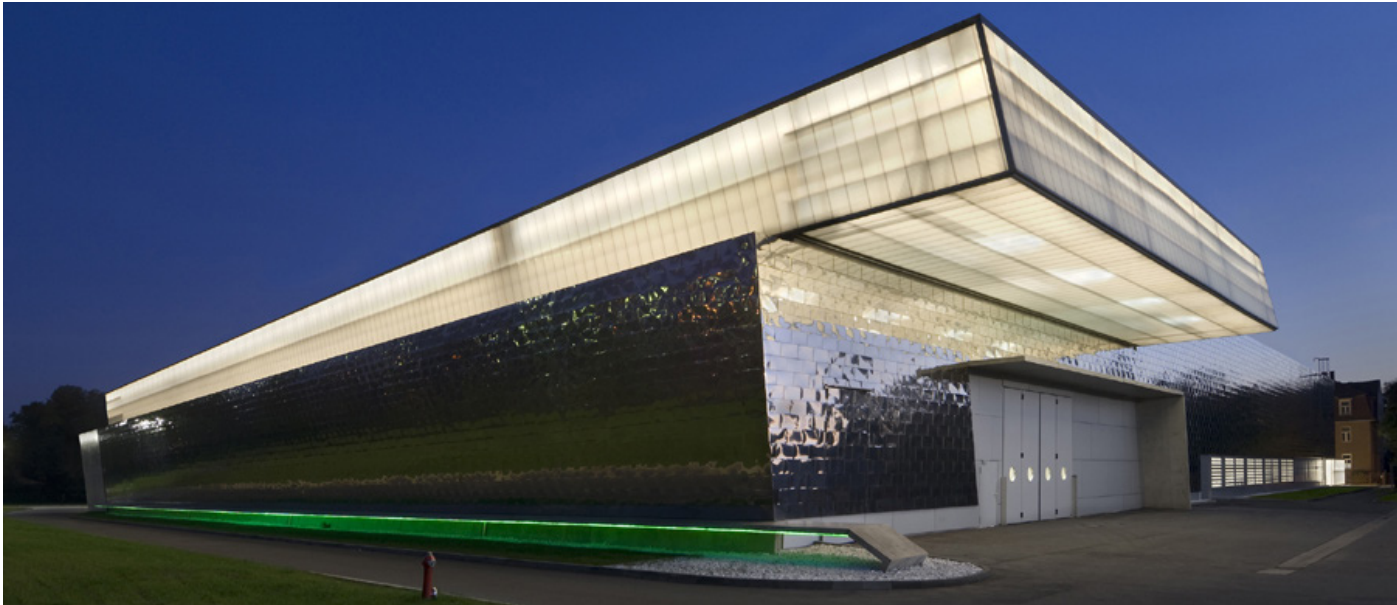
GFC Coswig

Program: Offices and warehouse

Architect: Wurm + Wurm Architekten

Area: 8100 m²

Year: 2009



Reliance Controls

Program: Office, factory

Architect: Team 4 (Richard Rogers and Norman Foster)

Area: 3200m²

Year: 1966



Dazzle camouflage

Artist: Norman Wilkinson

Year: Around WW1

