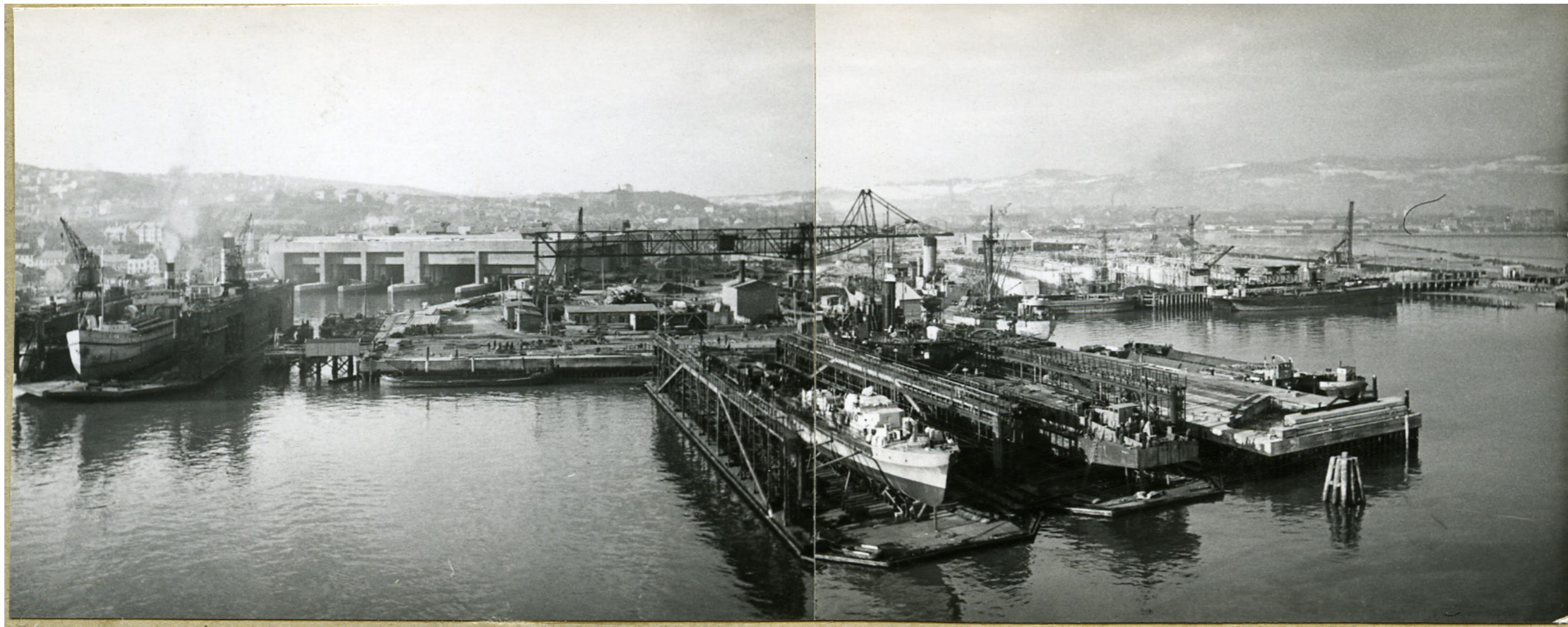




Dora2



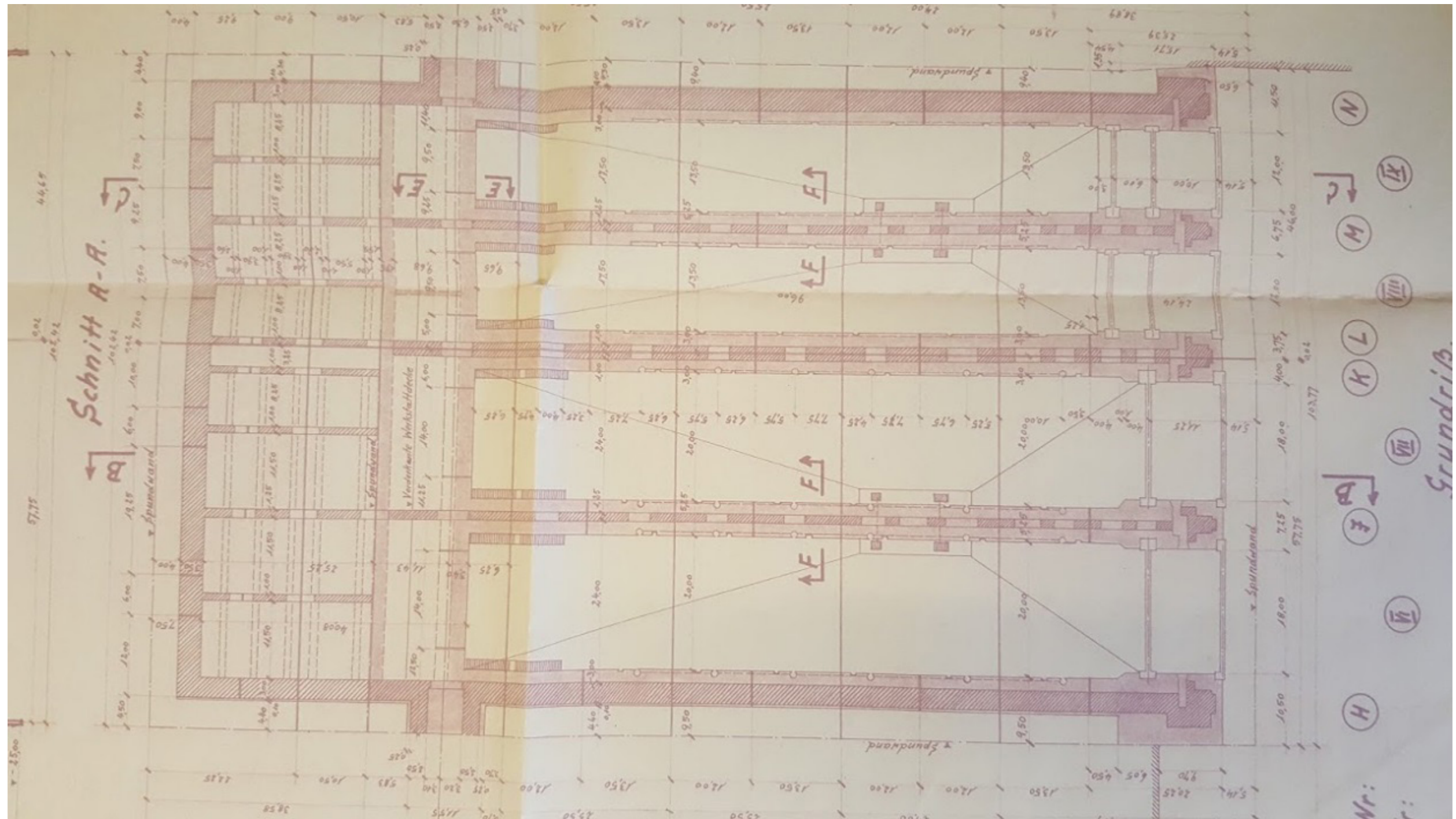
I find the idea of hundreds of these ghost structure spread along the western coast of a growing continent very exiting.



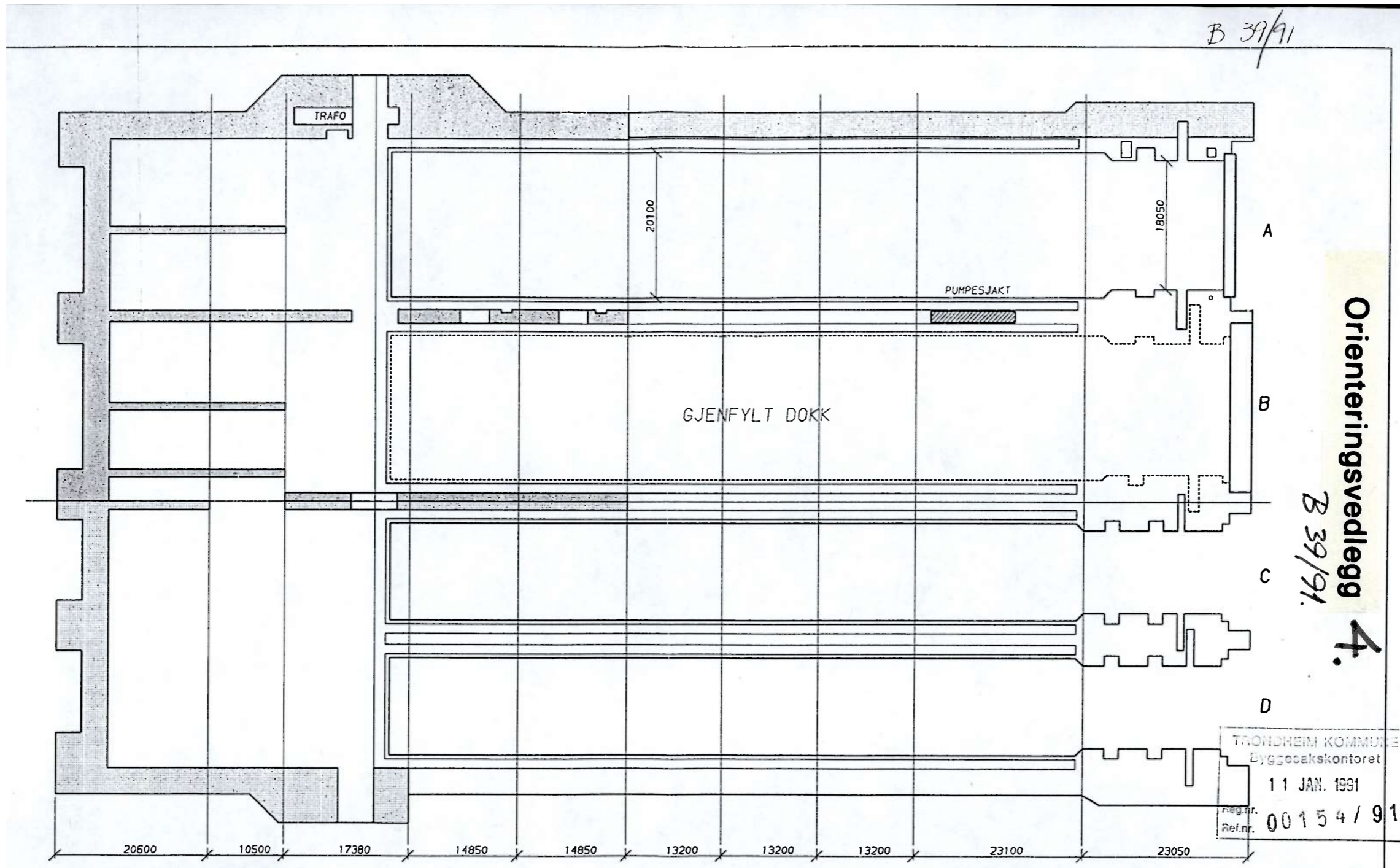
How to work with, and breathe new life  
in a complex building which its purpo-  
se was solely to promote destruction?



What will become of these ghost structures in an expanding urban world



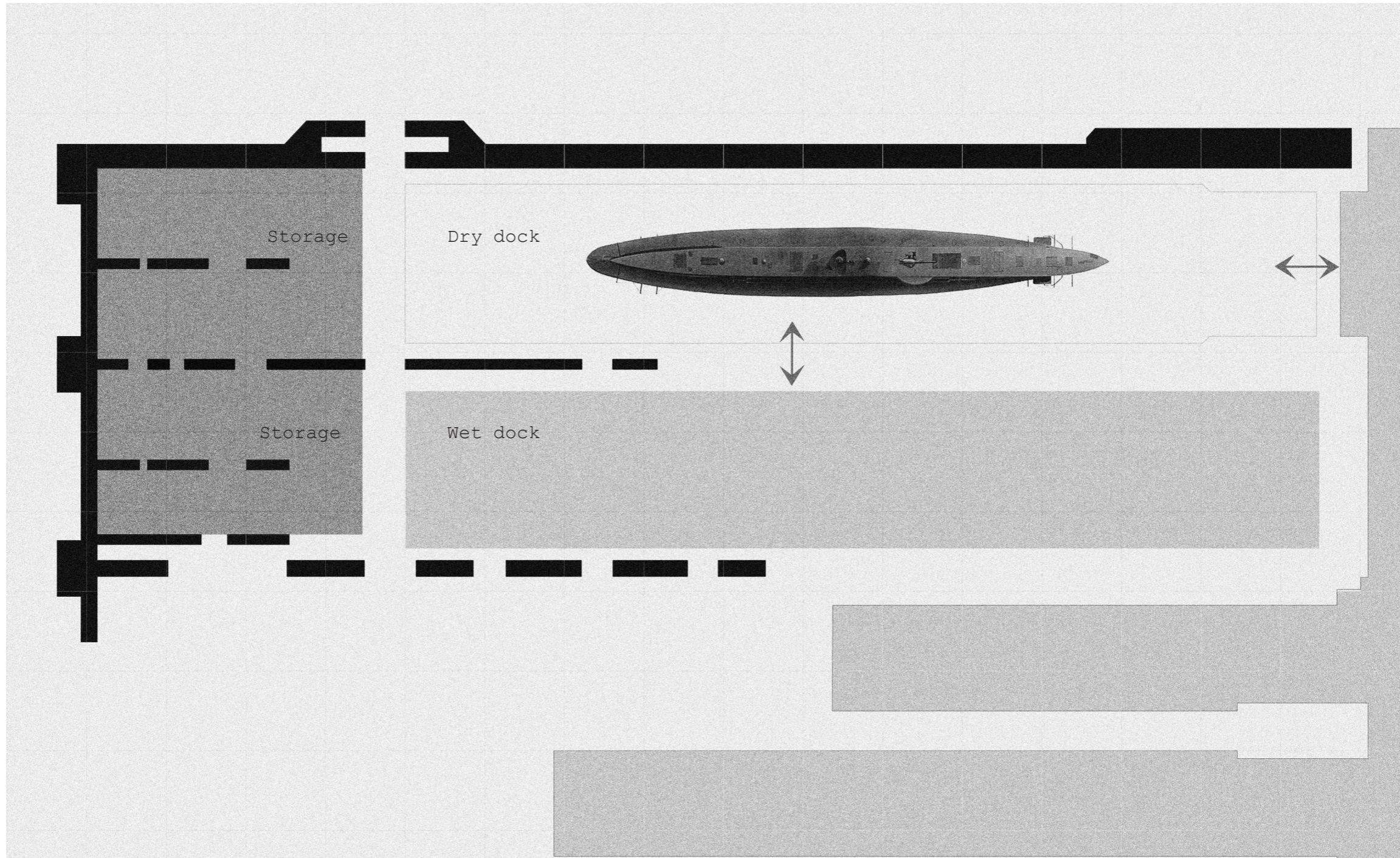
Projected plan for Dora 2 by Organisation Todt



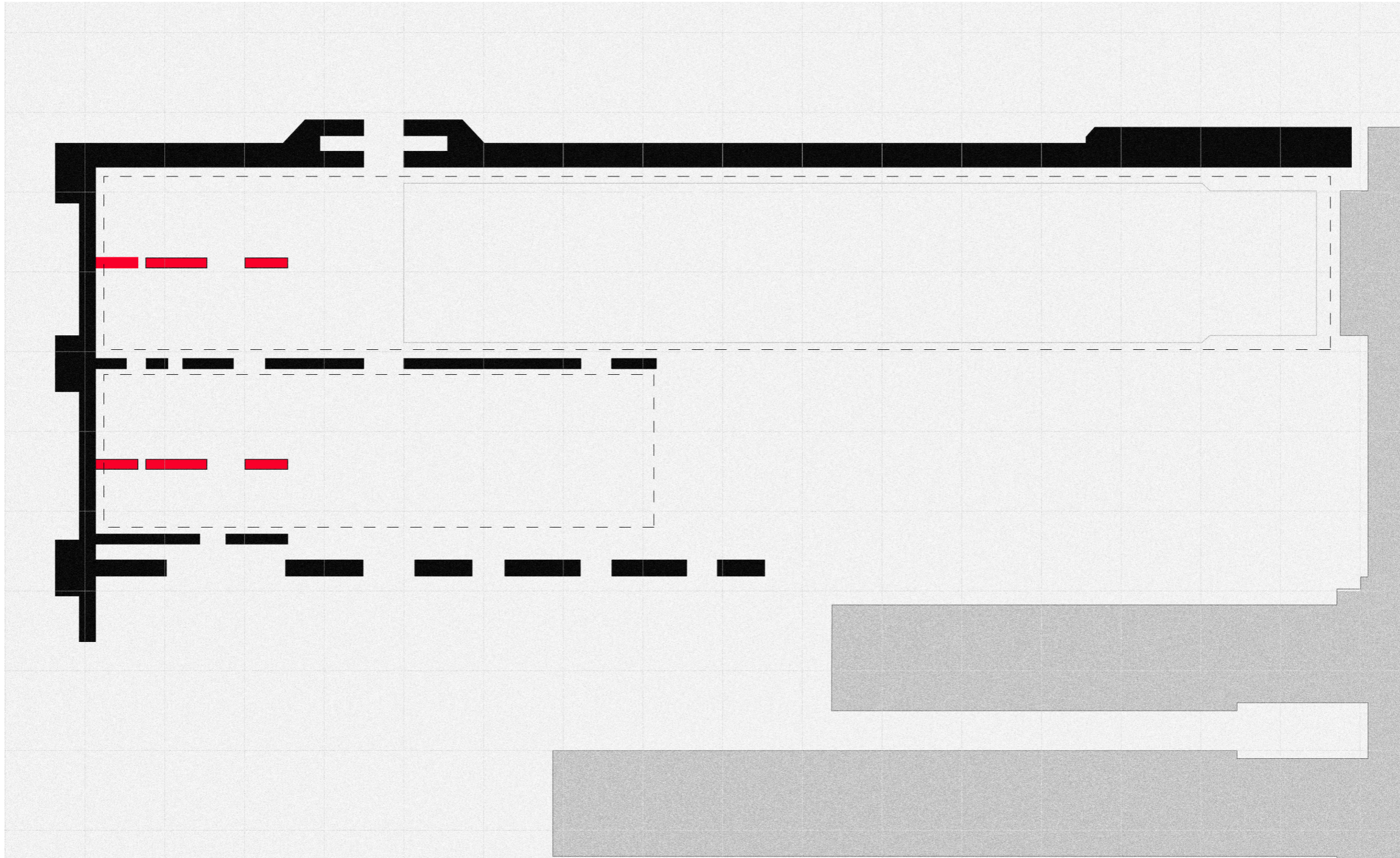
Orienteringsvedlegg 4.

B 39/91.

Post-war plan

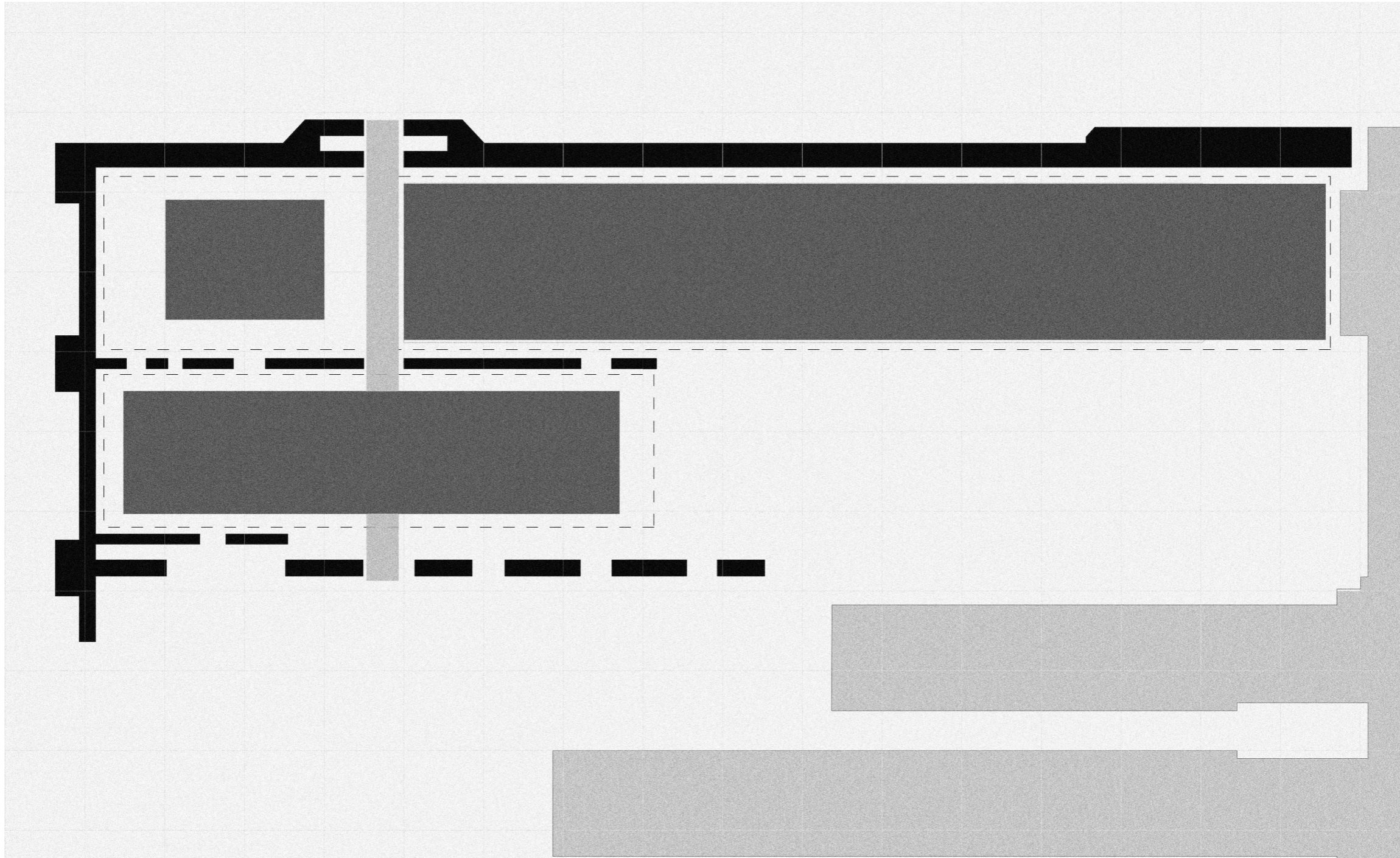


Dora 2 was constructed with a wet dock and a dry dock. The dry dock was the working submarine basin. The wet dock provided with flood-gates for restraining the water, and could mechanically empty the dry dock.



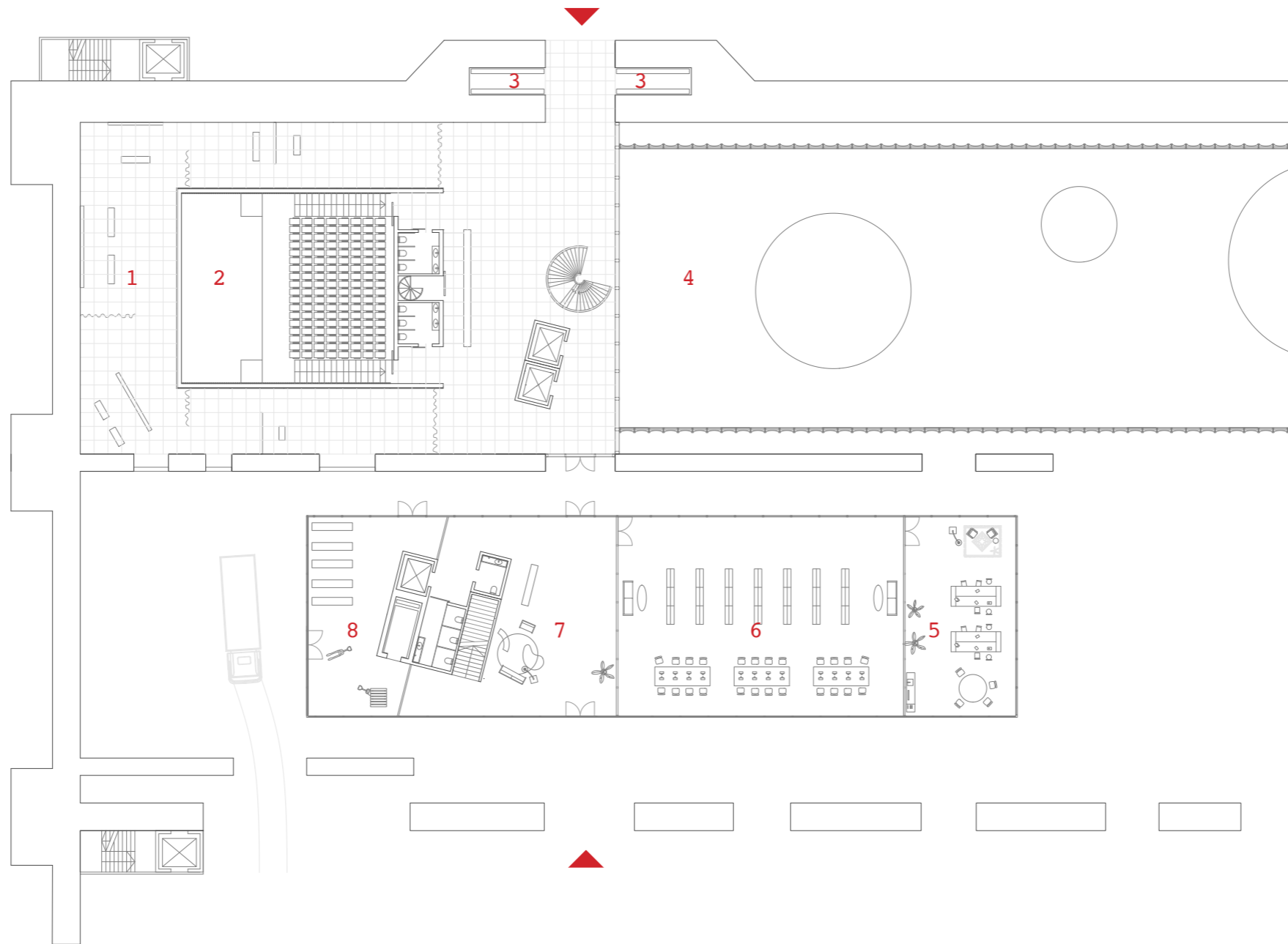
I started by defining the existing spaces. I wanted to intervene with minimal "damage" into the structure, at the same time taking advantage of its structural possibilities. The geometry and logic of my intervention is defined by the axial spaces of the bunker. Two partition walls had to be removed in order to get the full benefits of the spaces.





I wanted to use the strong enfilade space, to shape my geometry even further. I worked with two volumes "detached" from the existing walls, which define the spatial and structural idea of the project: The Archive is a volume suspended from the roof, whereas the exhibitions are freestanding volumes under the roof.

A brief description of the programs

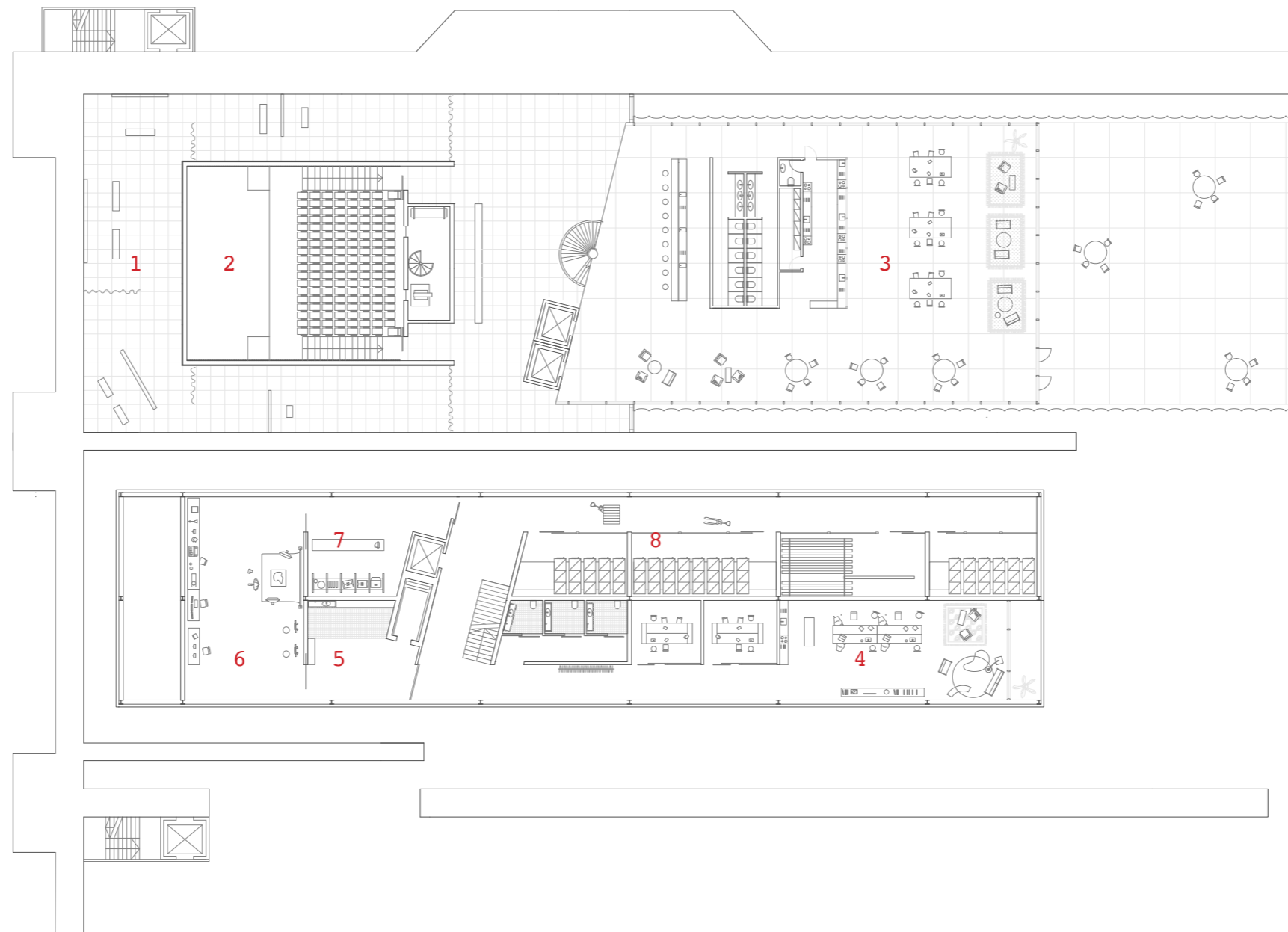


Extroverted spaces

- 1 Digital exhibitions
- 2 Performance space
- 3 Cloackroom
- 4 Object-based Exhibition

Introverted spaces

- 5 Office for Exhibitions
- 6 Public study room for Archive
- 7 Reseption Archive
- 8 Loading dock

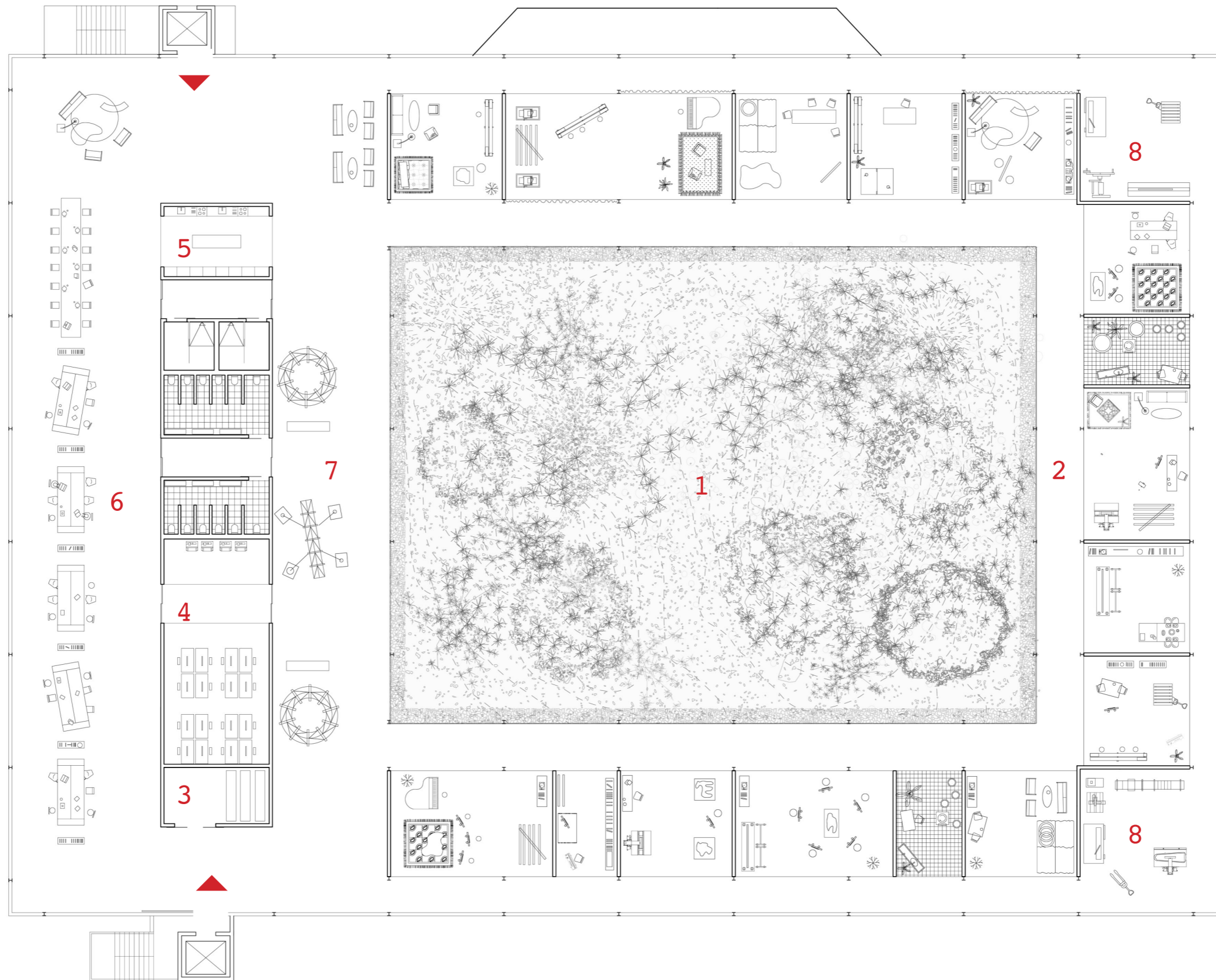


Extroverted spaces

- 1 Digital exhibitions
- 2 Performance space
- 3 Bar and Restaurant

Introverted spaces

- 4 Staff room Archive
- 5 Sanitation room
- 6 Dokumentation room
- 7 Packaging room
- 8 Archive space



- 1 Garden
- 2 Atelier spaces
- 3 Material Storage
- 4 Media room

- 5 common kitchen
- 6 Study room
- 7 Exhibition space
- 8 Specific workshops





Illustration of Dora2's Opening exhibition



A view from inside the main Exhibition space





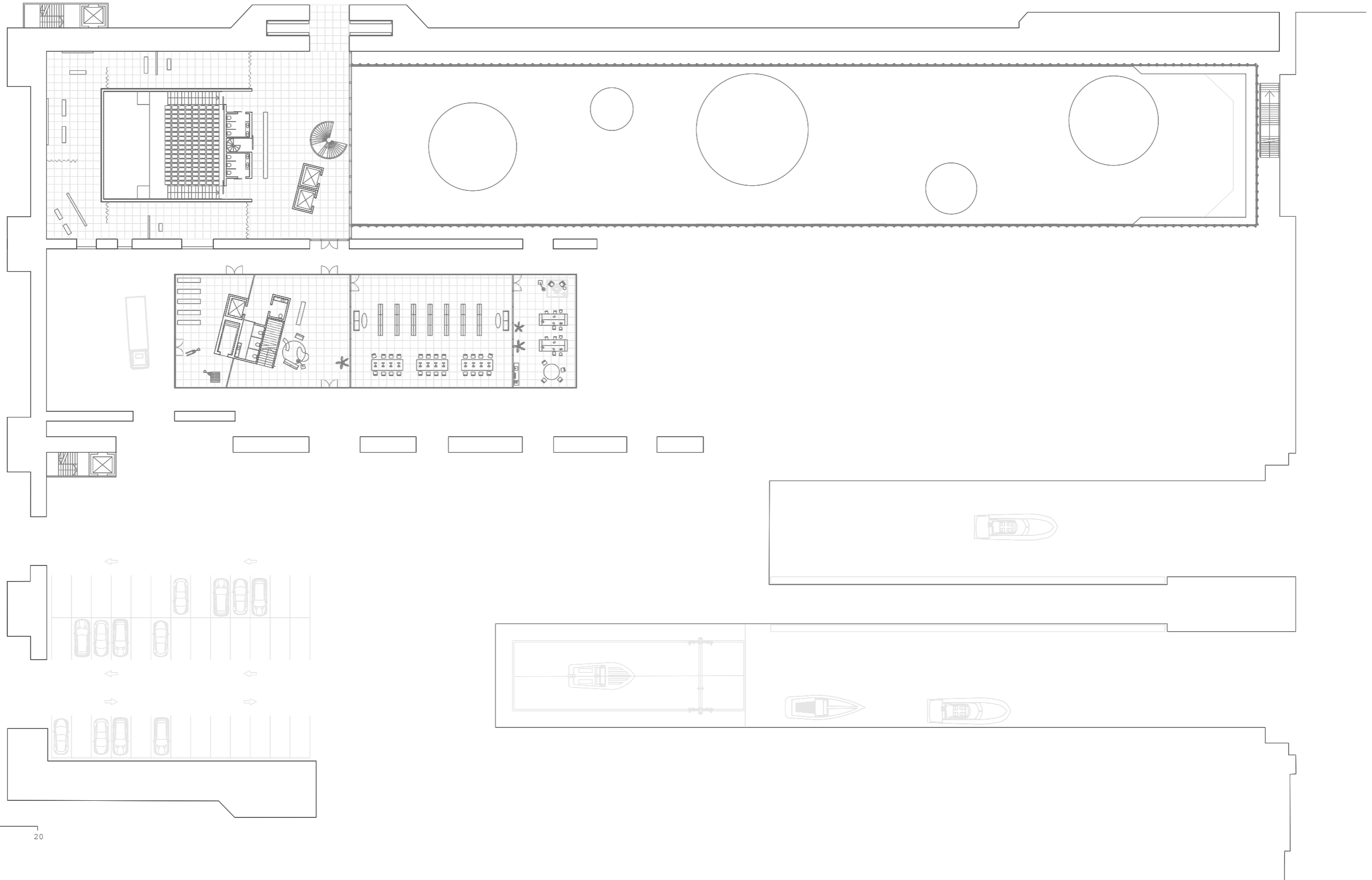
A view from the public space,  
facing the atelier



Restaurant overseing the fjord

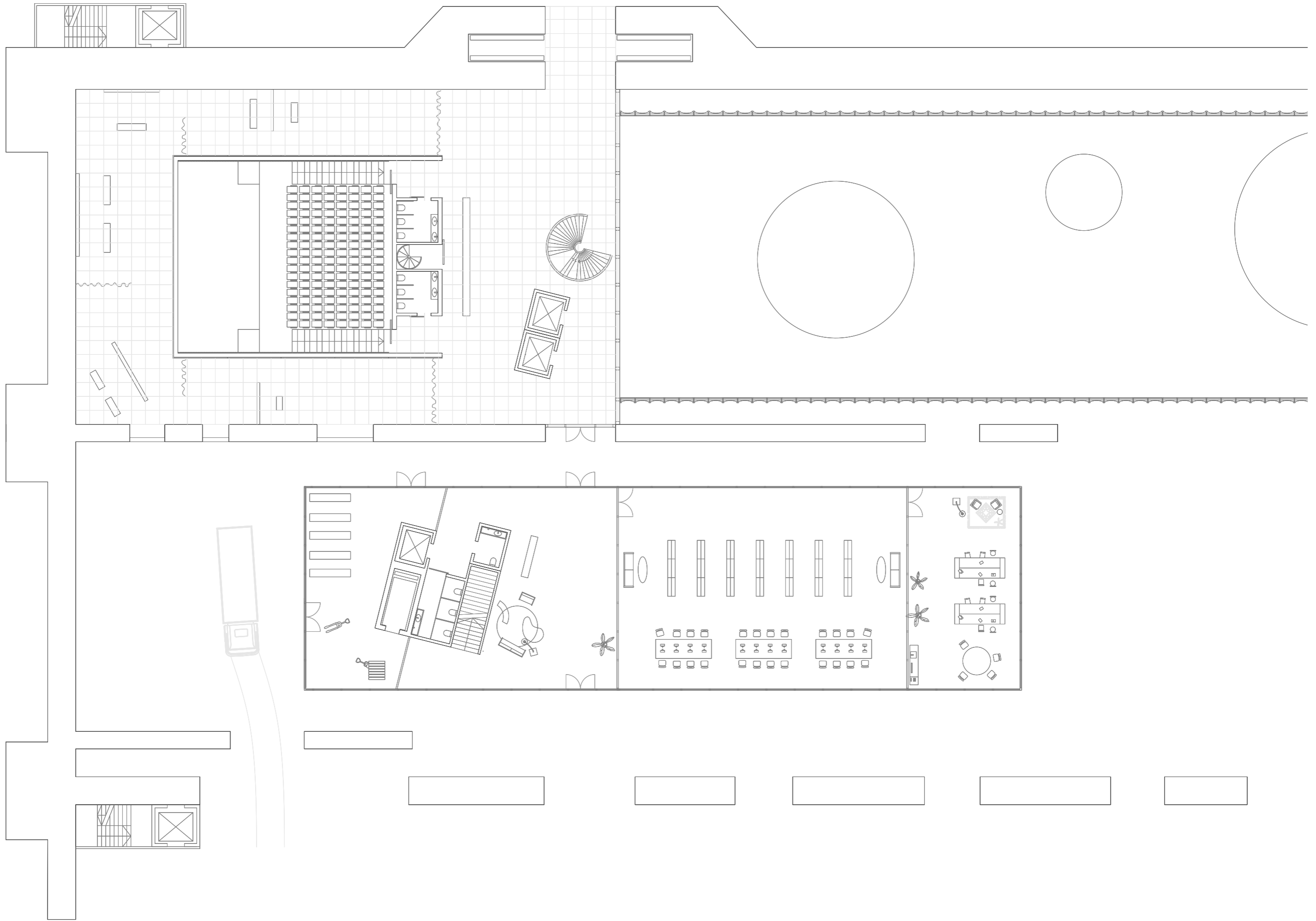


Video Exhibition



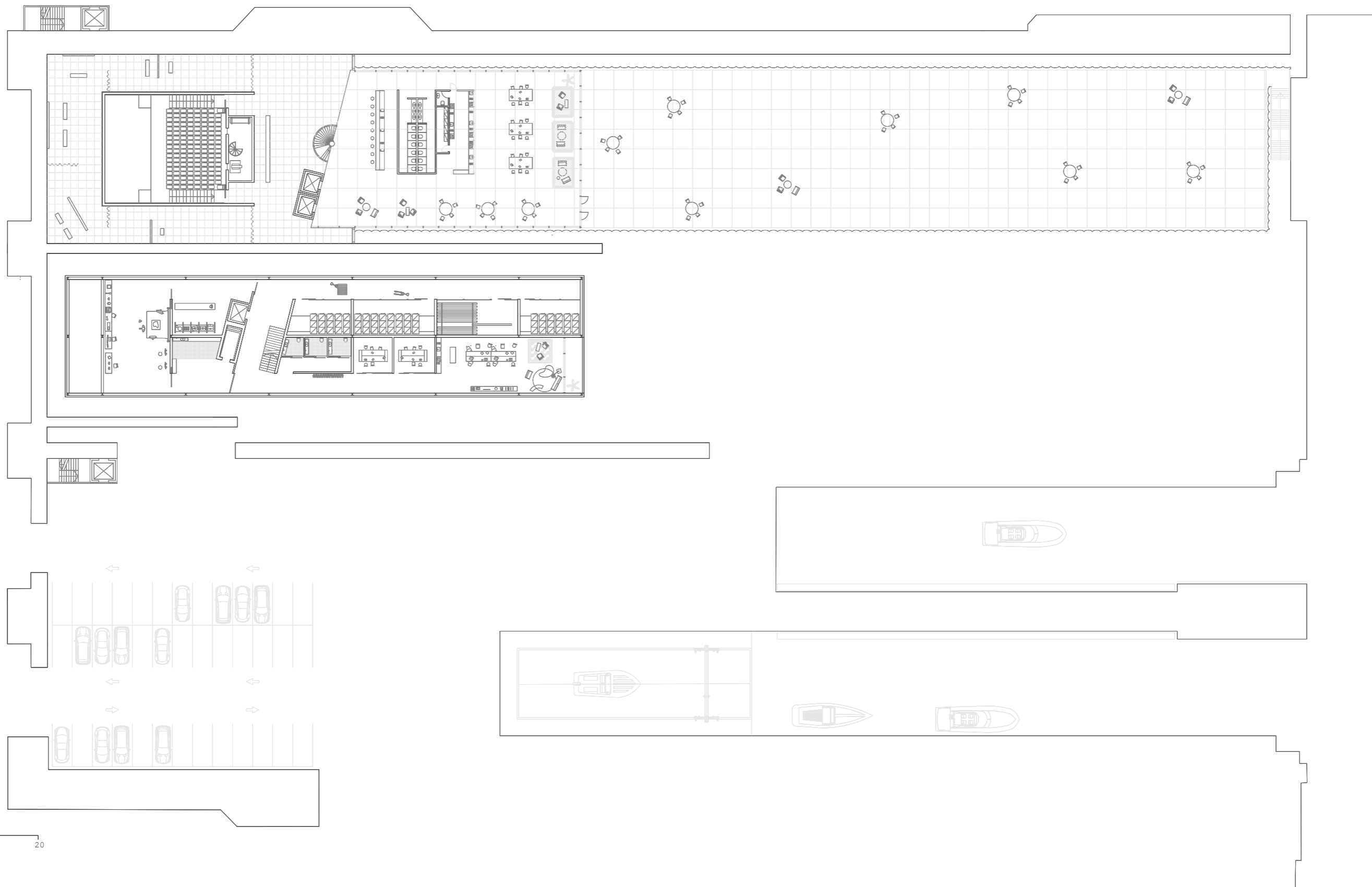
1 5 10 20

Ground floor



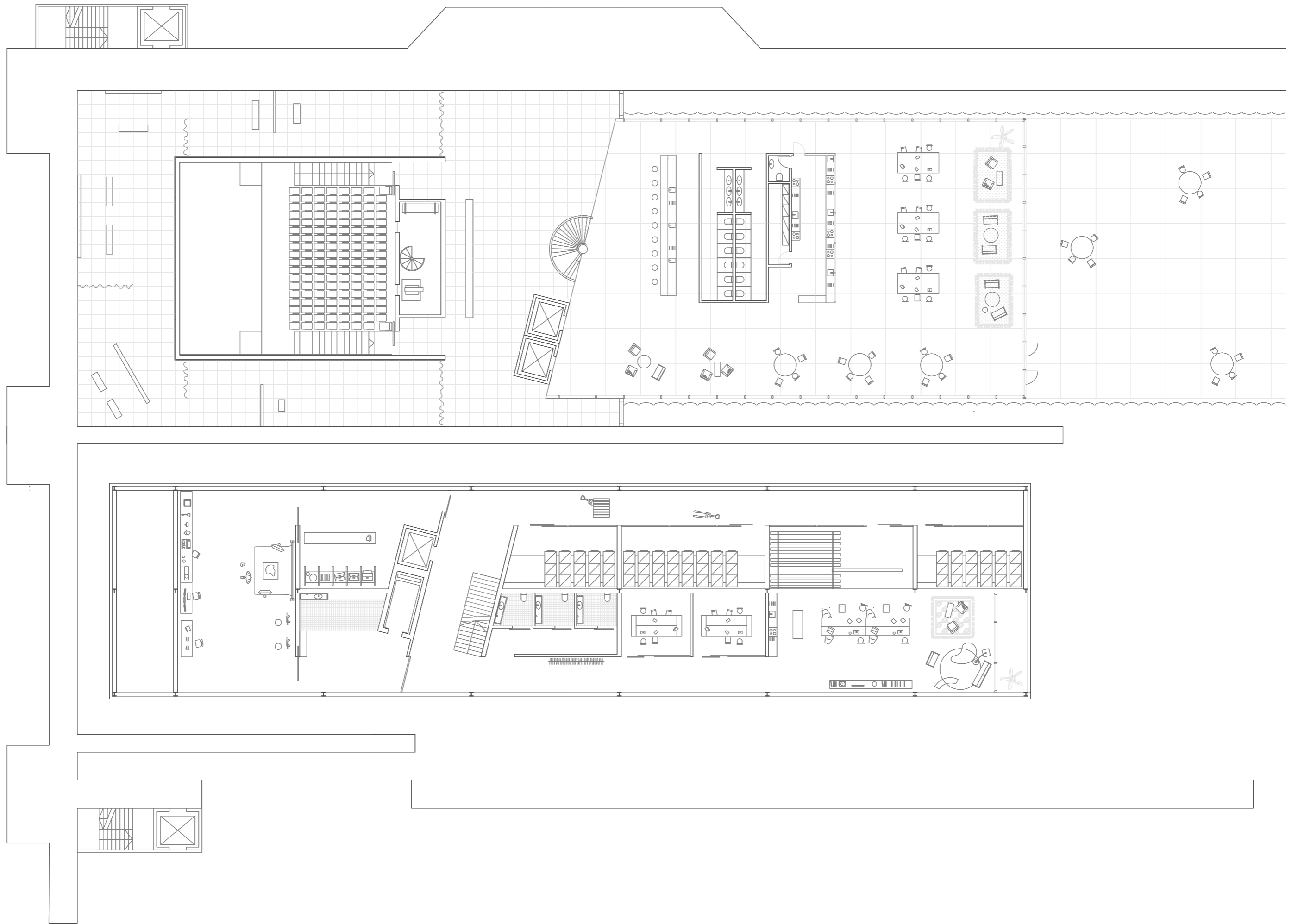
Ground floor





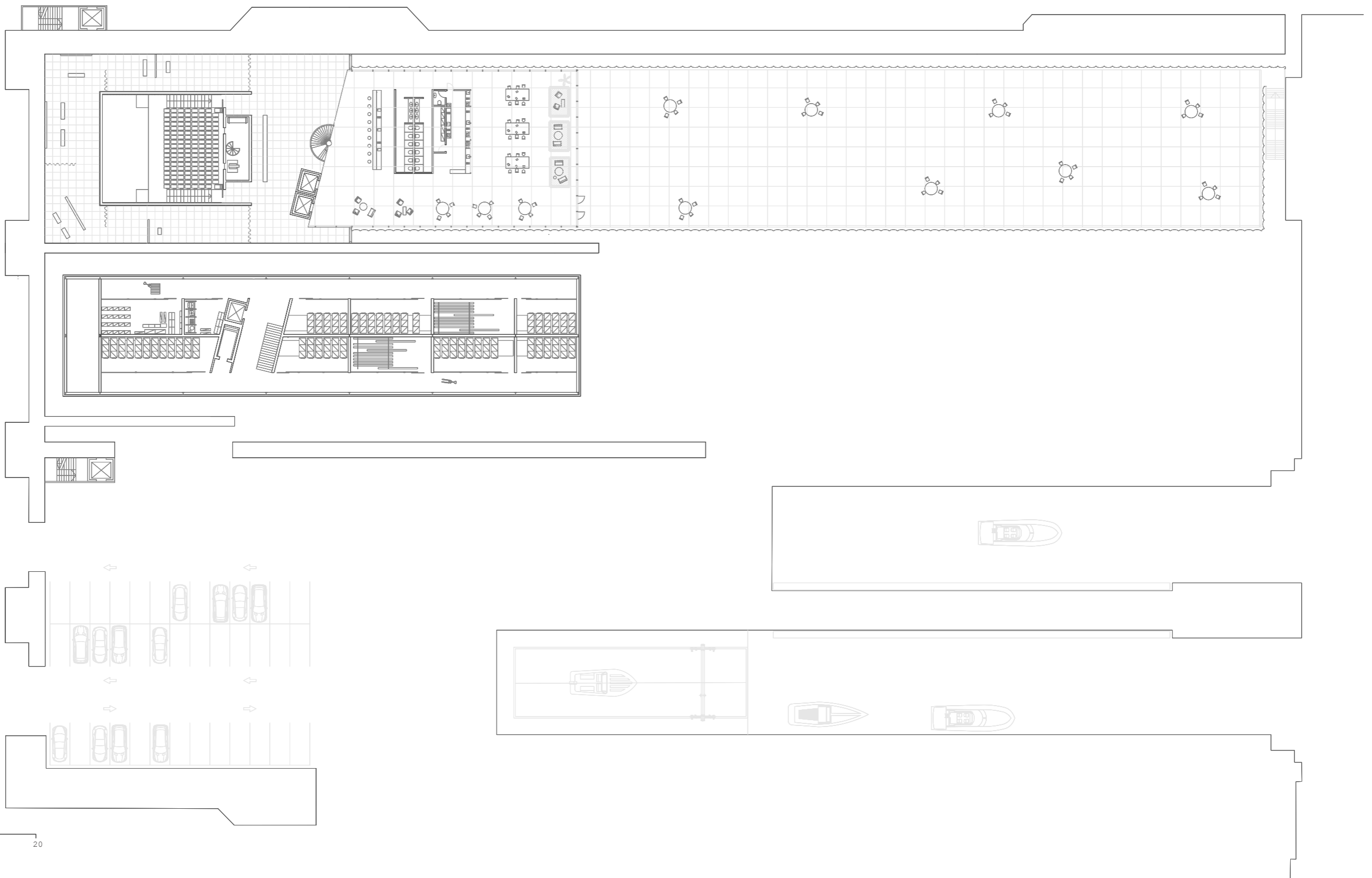
1 5 10 20

Second floor



Second floor

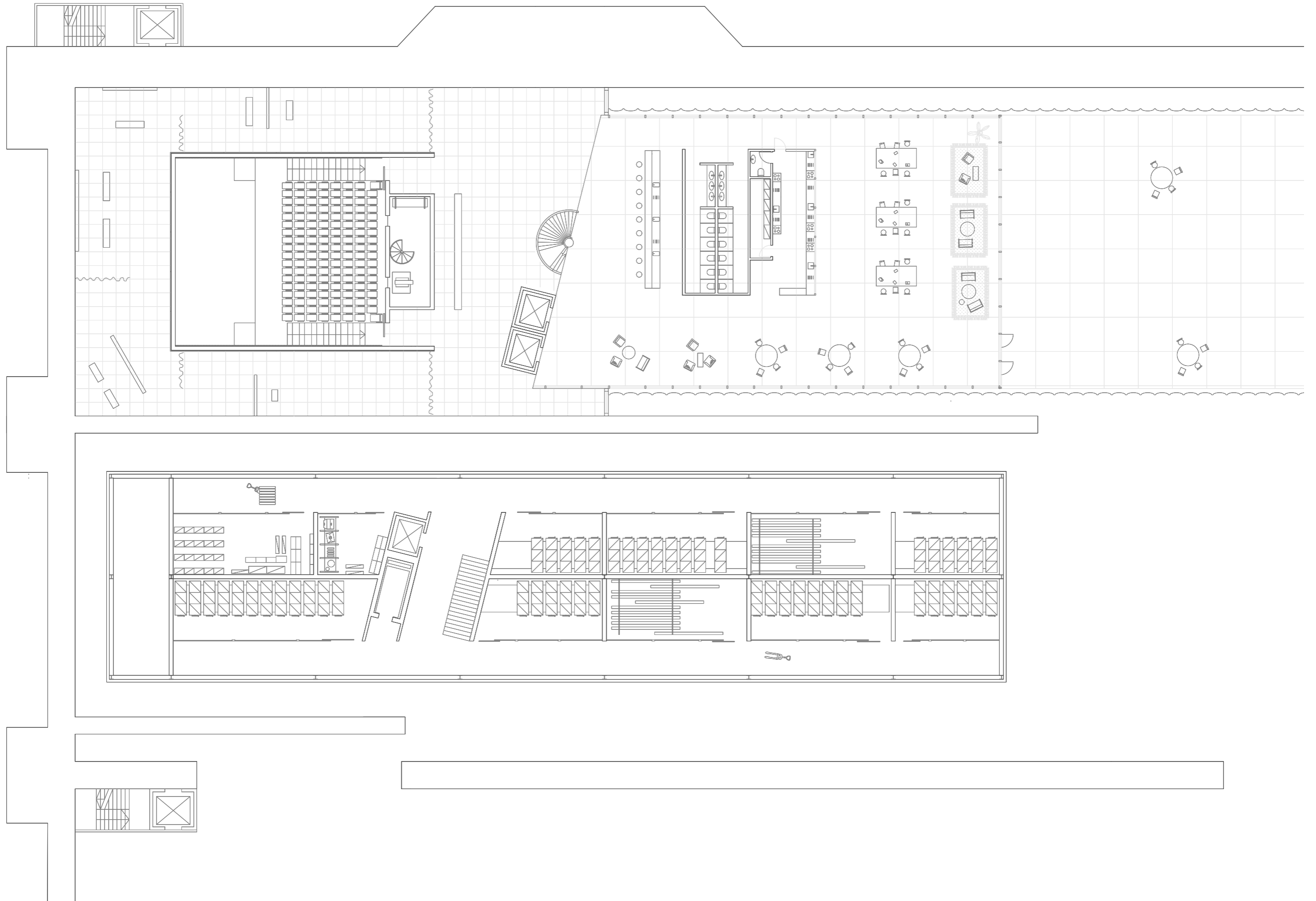


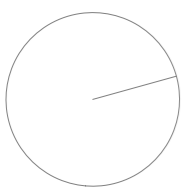
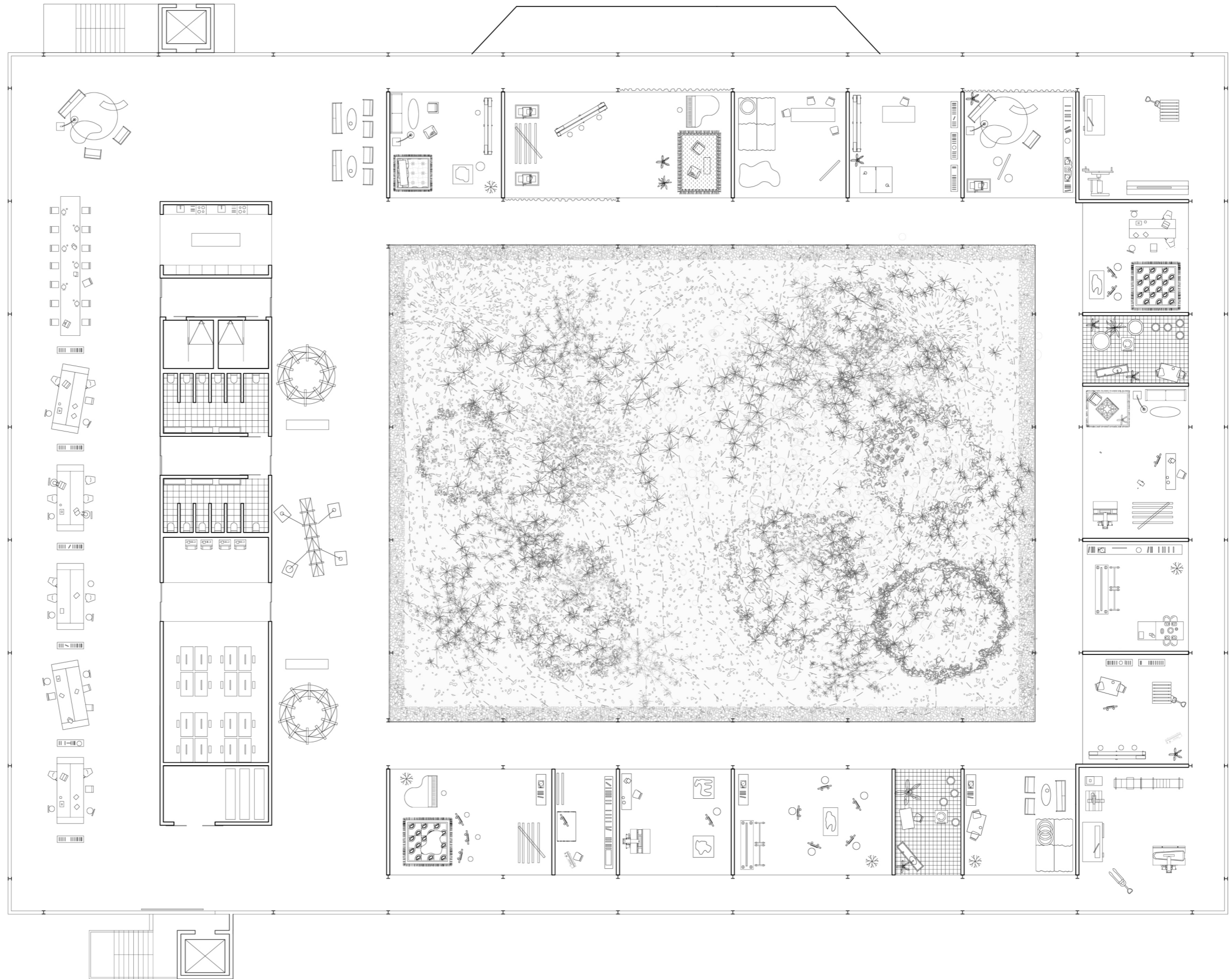


1 5 10 20

Third floor Archive







Roof plan



