

Reimagine a Factory



4. Productions

Diploma student
Peder Ravneng

Supervisor
Erik Langdalen

External supervisor
Wenche Andreassen

*Institute of Form, Theory and History at the
Oslo School of Architecture and Design (AHO)*



Established in 1916, Norsk Teknisk Porselensfabrikk (NTP) started producing components to build up the establishment of electricity in Norway.

Today, they continue to contribute to the constant build up of electricity in Norway and Northern Europe.

This booklet will present the factory's past and present production facilities. In addition, it will present several projects, where elements from NTP are used.

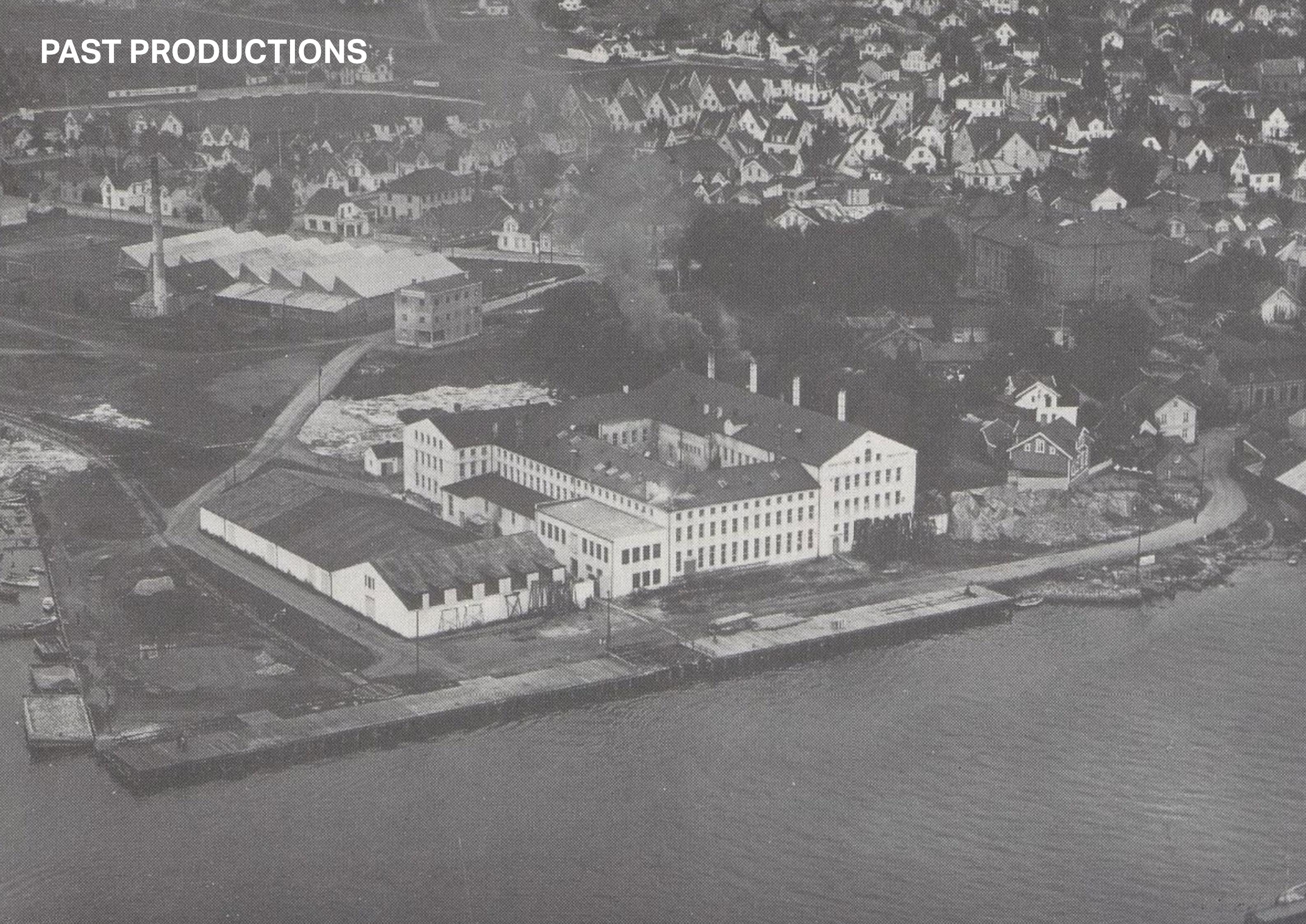
All photos are either taken by the diploma student or retrieved from Digitalt Museum.

PAST	6
SELECTED PROJECTS	22
PRESENT	36

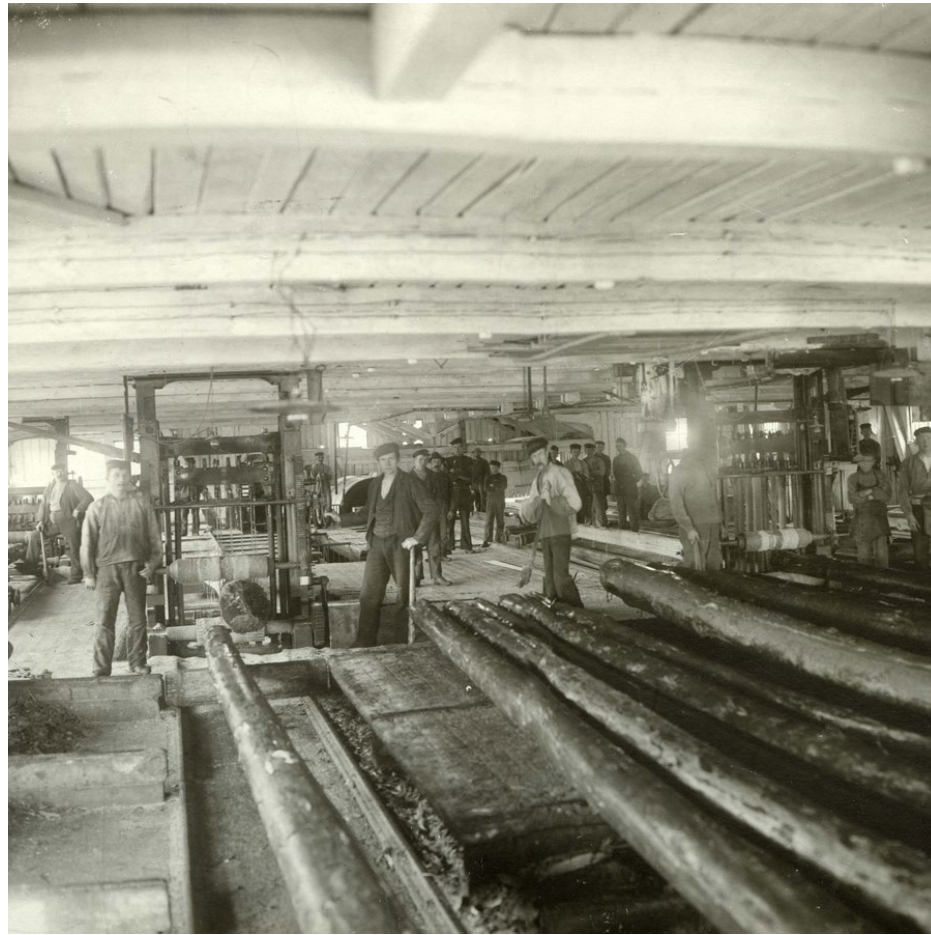


The river Glomma has always influenced the development of the city. Here seen in 1921 from Kråkerøy.

PAST PRODUCTIONS



The industrial development of Fredrikstad



Gressvig Brug (1873)

From saw mills →



Fredrikstad Mekaniske Verksted (1898)

to docklands and factories.



Norsk Teknisk Porselen (1916)



The site for Norsk Teknisk Porselensfabrikk (NTP) before its establishment.



Aerial view of Fredrikstad in 1920.
The site in the south west corner.



Workes at Fredrikstas Wharf (FMV) in 1924.
Norsk Teknisk Porselen in the background.



Indsalget



Eneret
7061. J.H. K uenholdt, A.S.

Fredrikstad, Porselansfabrikken

Postcard from 1918.



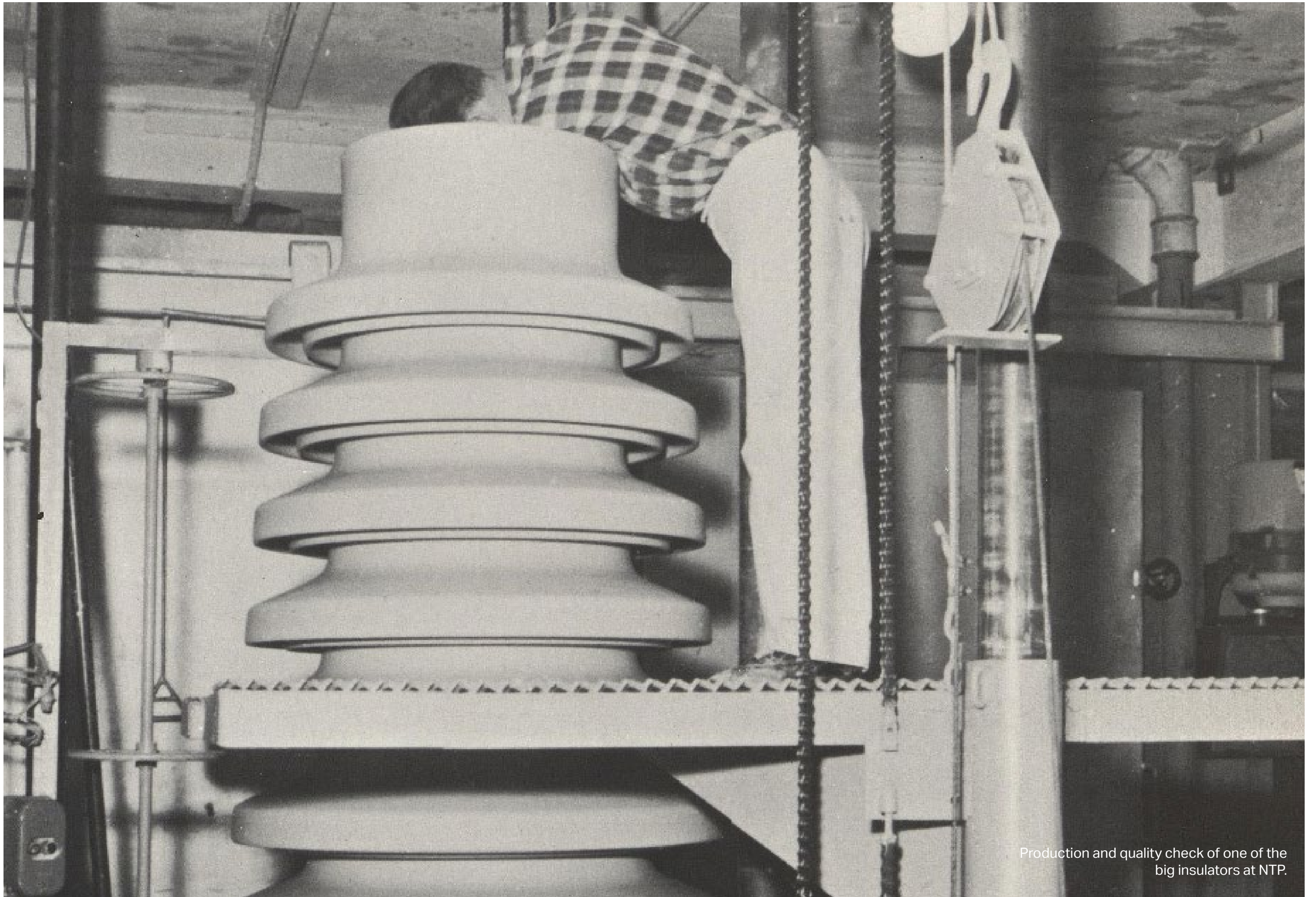
Interior view of Kitteriet



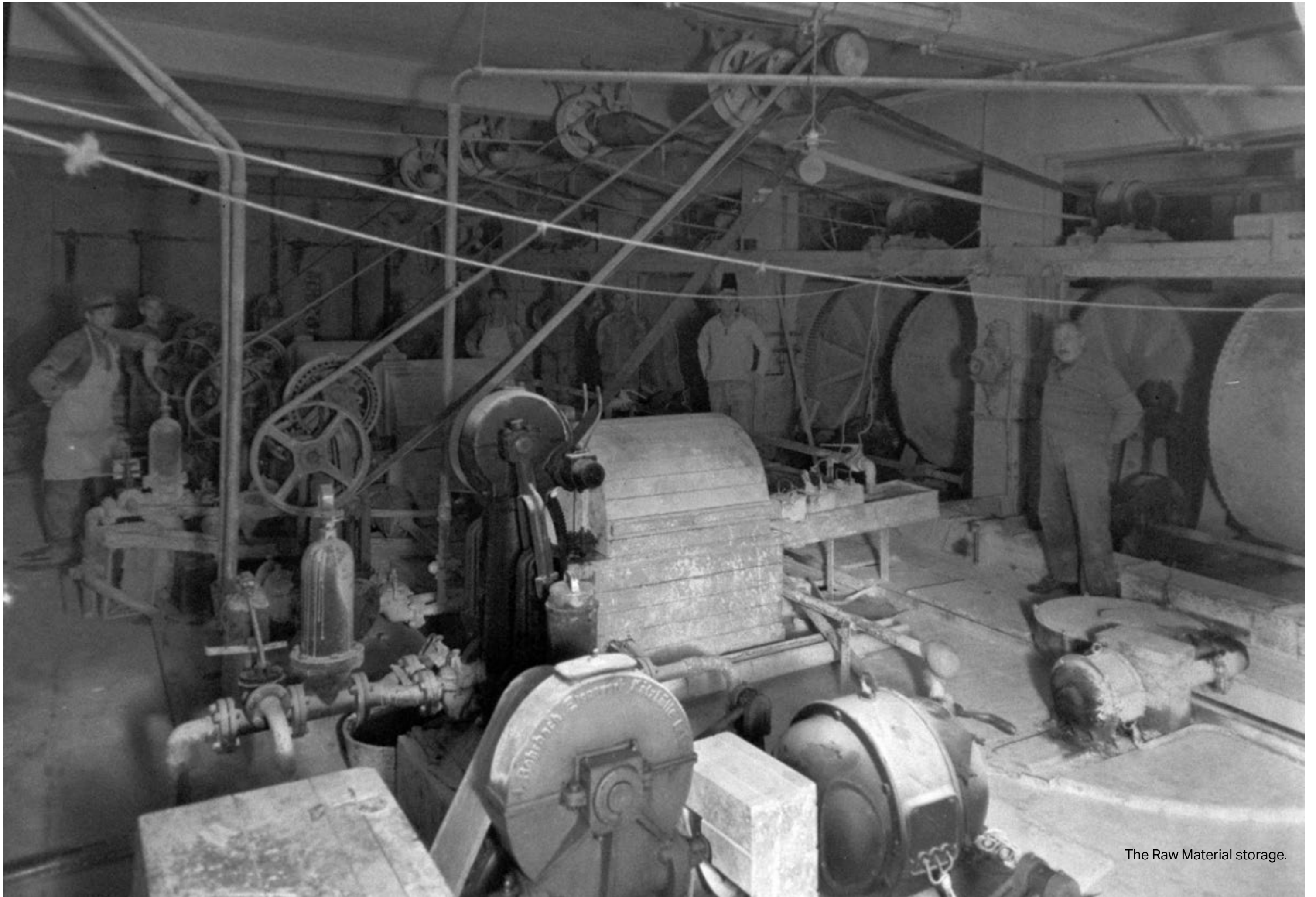
NTP were one of the first factories hiring women.
Hwee seen in the shaping dept.



The factory produces elements, which can be up to two meter high.



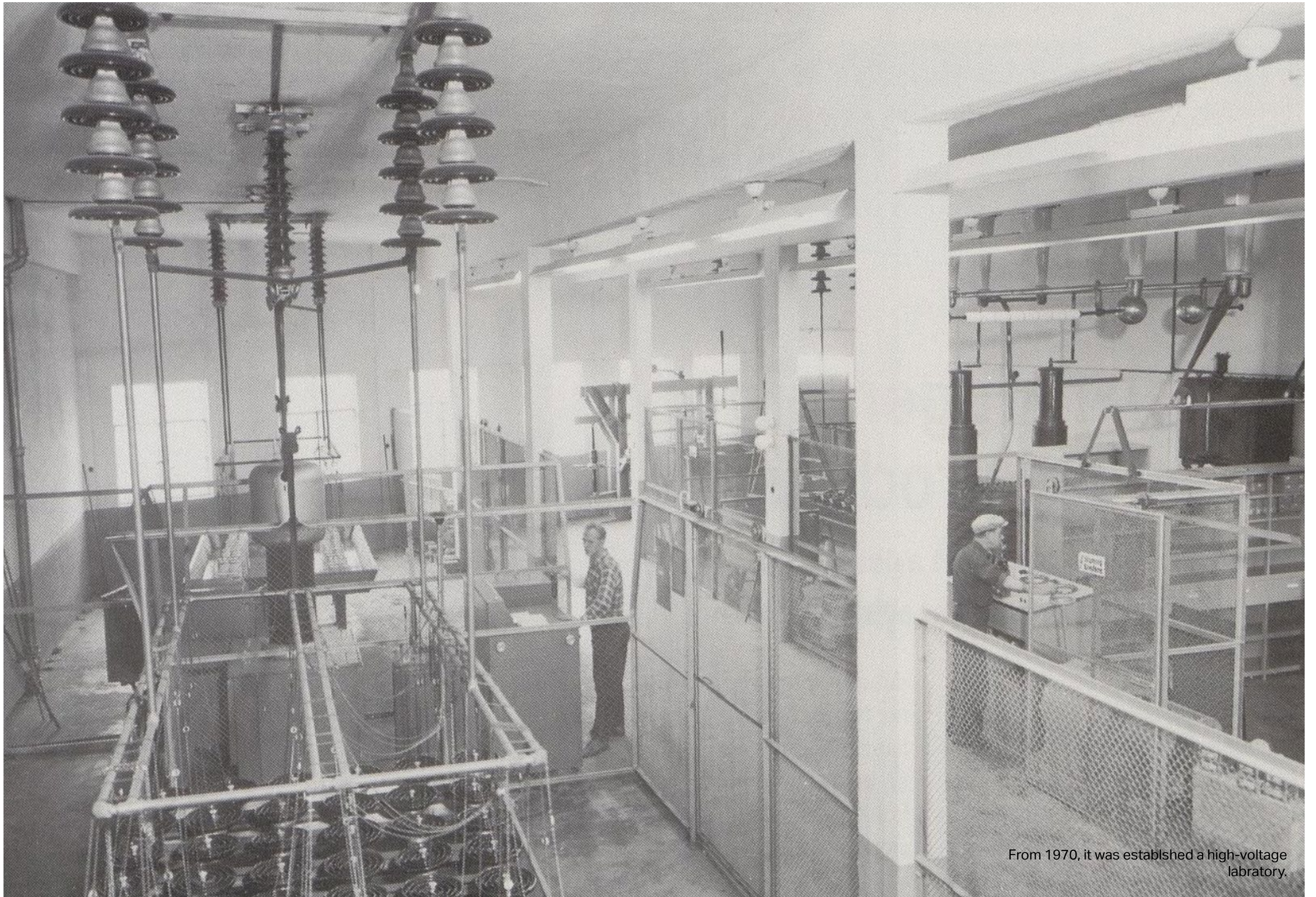
Production and quality check of one of the big insulators at NTP.



The Raw Material storage.



From 1923 - 1964, the factory also produced cups and plates.



From 1970, it was established a high-voltage laboratory.

SELECTED PROJECTS WITH ELEMENTS FROM NTP



The first electrical lamp in Norway, was lightened up
in 1877 at Lisleby Brug in Fredrikstad.

Vemork power station

The largest power station in the world in its first production years.

Location

Rjukan, Vestfold & Telemark county

Start of production

1911

Start of use of elements from NTP

1916

Status

Listed as UNESCO Heritage

Monument



Vamma power station

*Europe's largest low pressure plant
in it's start up years.*

Location

Askim, Viken county

Start of production

1915

Start of use of elements from NTP

1918

Status

Protected, and operational.



Drammenbanen

First electrified railway line connecting Kristiania (Oslo) to Drammen.

Location

Oslo and Viken county

Start of production

1922

Start of use of elements from NTP

1922

Status

Operational.



Tafjord power station

One of first power stations in Sunnmøre-region in Norway.

Location

Ålesund, Møre og Romsdal county

Start of production

1923

Start of use of elements from NTP

1923

Status

Operational



Nore powerline

Biggest supplier of electricity in the Eastern Norway. Still in use.

Location

Rødberg, Viken county

Start of production

1928

Start of use of elements from NTP

1928

Status

Nore I plant is protected by the owner Statkraft.



Røldal-Suldal facility

A facility between Røldal and Suldal, most famous for its Geir Grung drawn building.

Location

Nesflaten, Rogaland county

Start of production

1963

Start of use of elements from NTP

1963

Status

Energihotellet is protected and closed, but the facility is operational.



PRESENT PRODUCTIONS



The site in 2021.



The view of the site from the west and Værstebrua.



Between the *Treatment* and *Composite* building.



The rivefront today.



Kitteriet facade



View from Kitteriet to the Treatment dept.



The riverfront today.



Composite and storage shed.



A part of the storage shed is a flea market storage today.



Shaping machines.



Main production area. Glazing on the left, and some of the ovens right ahead.



Glazing machines.



The oven room.



One of the artists and her art in the oven room.



The oven room.



The treatment dept.



The storage shed.



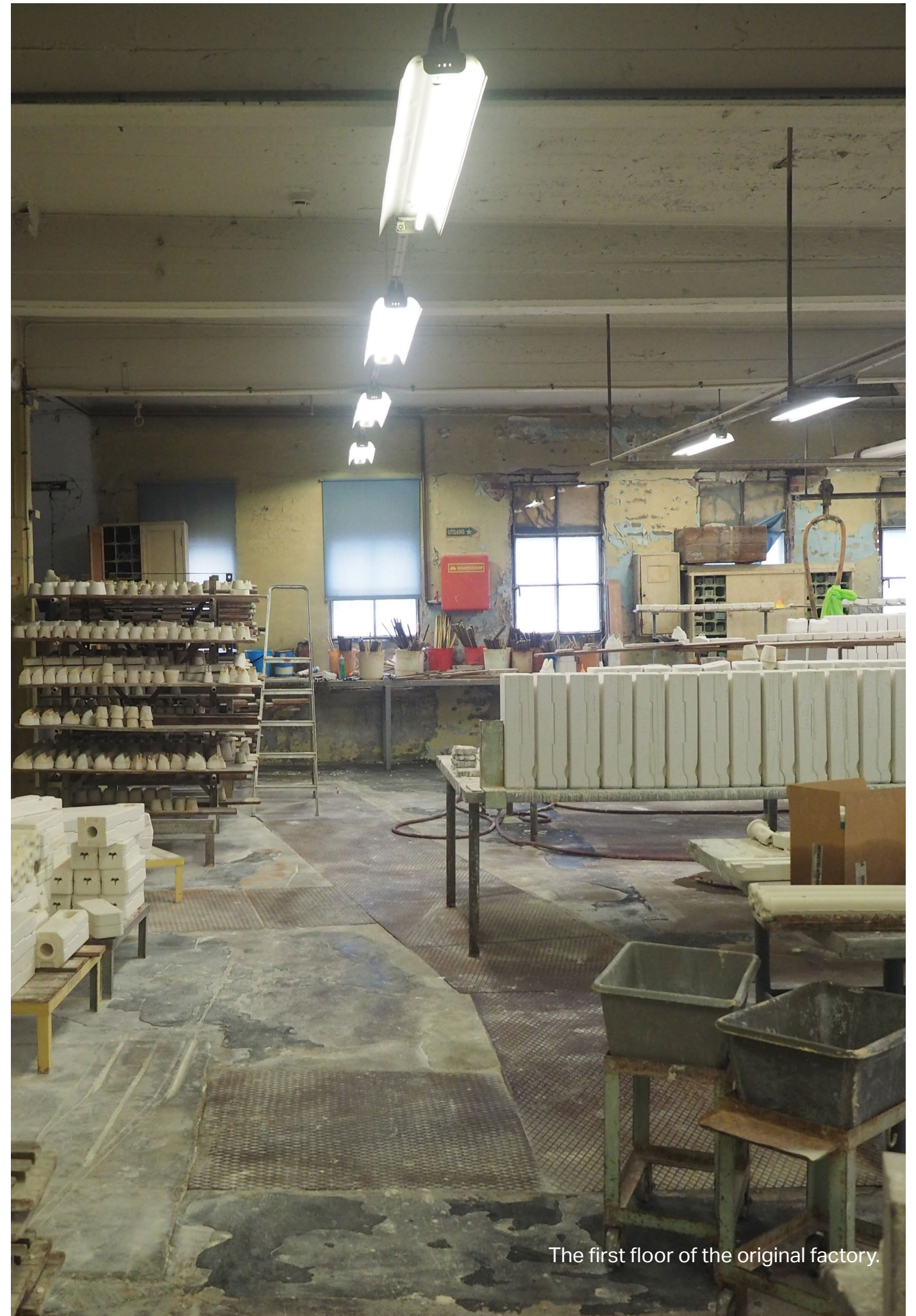
The ground floor of the original factory.



The first floor of the original factory.



The second floor of the factory building.



The first floor of the original factory.



The interior of the shed.



The interior of the shed.



The interior of the shed.



Ground floor of the *Composite* building.



First floor of the *Composite* building.



One of the artist arriving at her atelier.



One of the artists working at the factory floor.



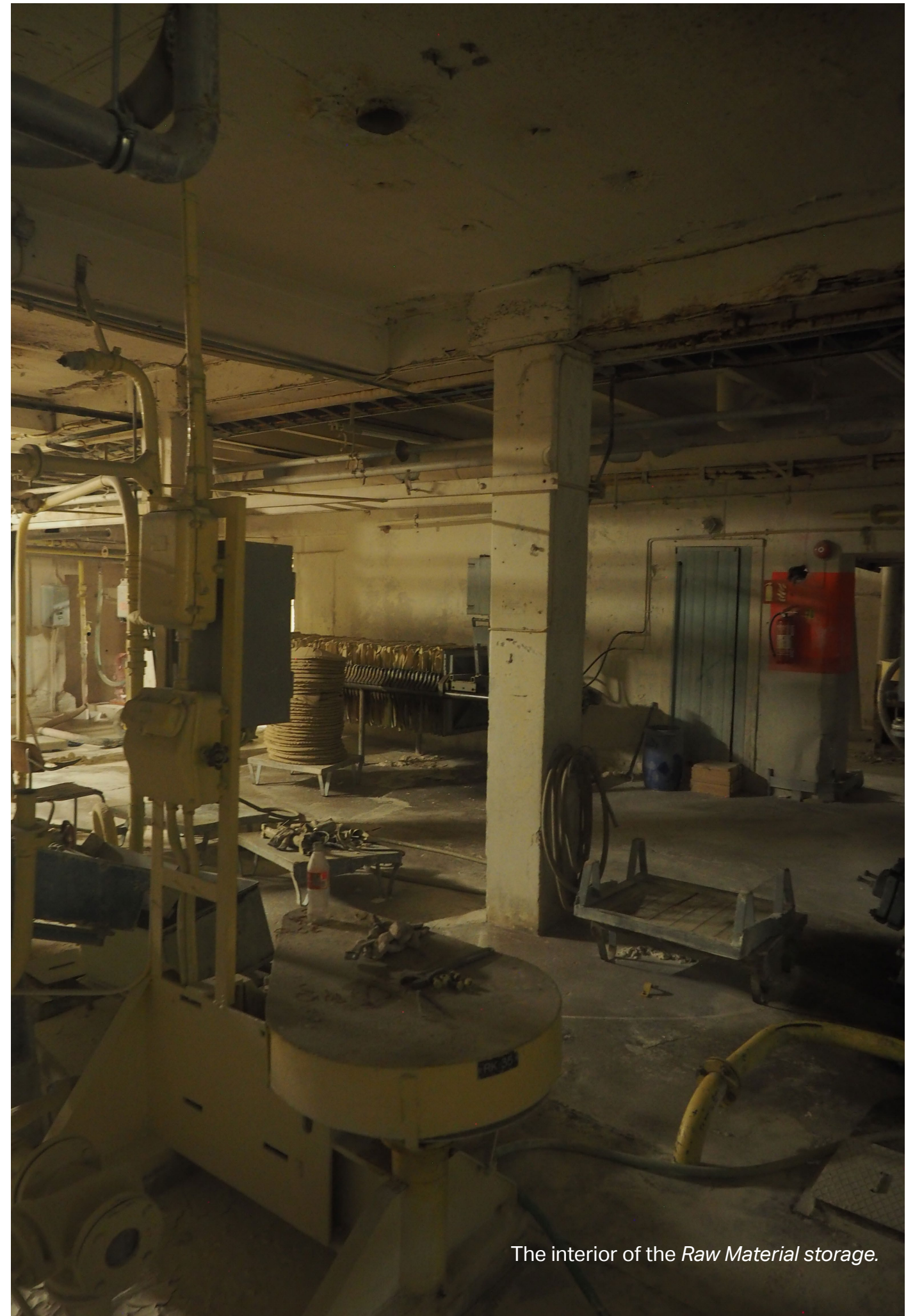
The atelier of the art collective.



The second floor of the factory building.



The interior of the *Raw Material storage*.



The interior of the *Raw Material storage*.

