

ET TÅRN OG EN  
BRØNN:  
ET STED FOR  
MUSIKK.



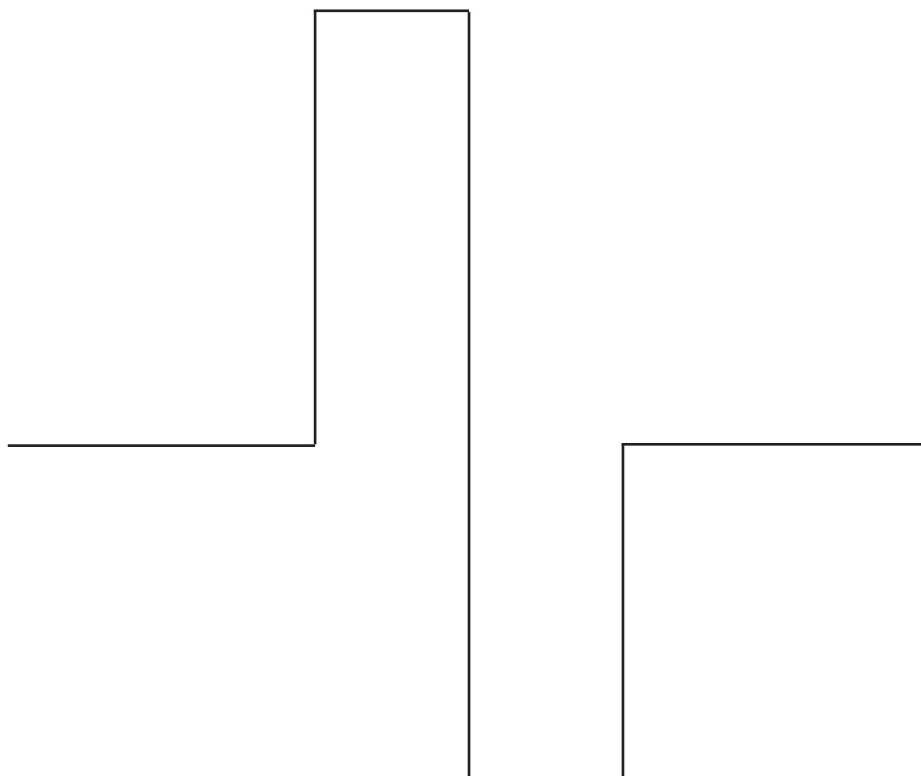
Initiativet fra starten og helt siden jeg leverte pre diplomten har vært å prøve å finne ut hva tårnets ubrukne potensial.

Prosjektet tar for seg programmet skole,i tårn. Tanken er at tårnet skal hjelpe de som er der med å gi mening til det de er der for.

På samme linje som et godt forhold til et pålitelig og elsket instrument er viktig for at en musiker skal lage god musikk og skal spille godt. Kan også et spesielt sted eller atmosfære være med på å hjelpe musikeren å spille lettere eller å lettere komme i sonen.

Sonen: En form for dyp konsentrasjon musikeren kan komme i. Dette kan føre til et høyere ytelsesnivå og en dypere tilkobling til de andre musikerne og publikum.

Jeg tror tårnet kan være med på å skape en spesiell atmosfære og være med på å forme en trio sammen med instrumentet å musikern, hvor de hjelper hverandre med å oppdage sine egne behov og sine grenser. For at musikeren og instrumentet skal kunne spille godt og lage god musikk må tårnet/tårnene utforske sitt ubrukne ubegrensede potensialet.

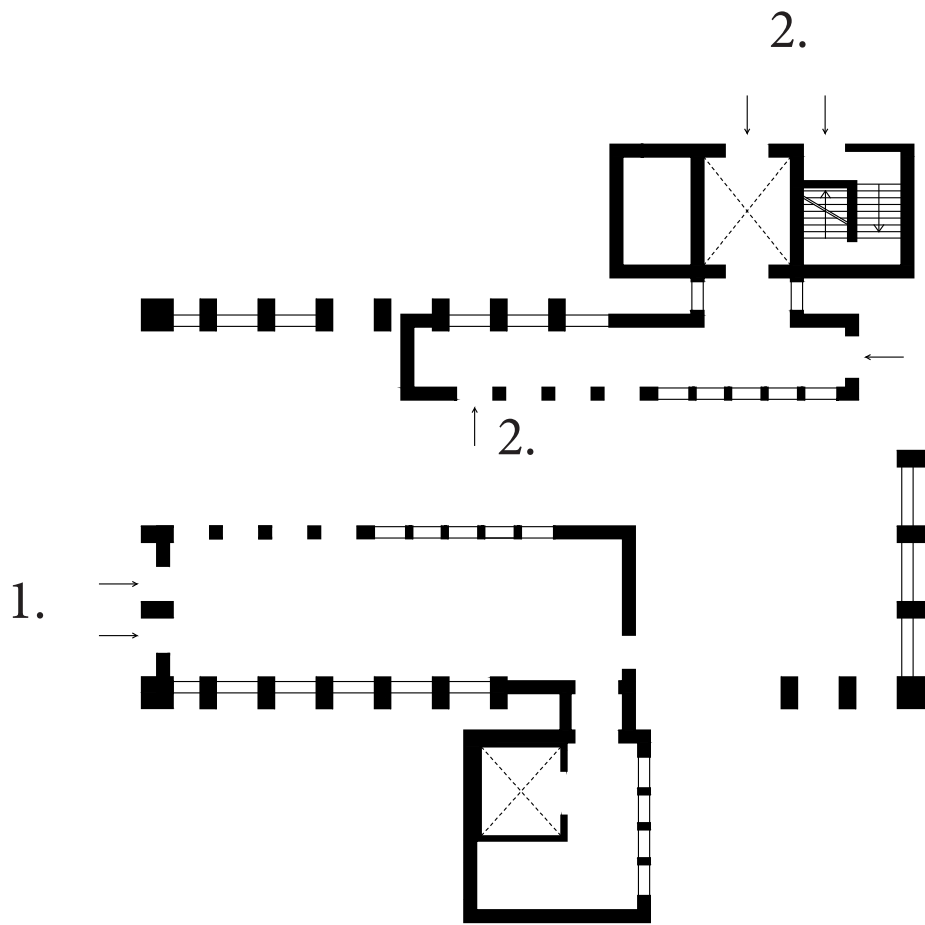


My fascination with towers started when in playing with the two terms The Conscious tower and The Unconscious tower.

Where The Conscious tower (The conscious mind) contains what we know about the tower or can learn about it today, its history, its symbolic meaning in fiction / myth and its metaphysical meaning. Everything that exists in the physical world about towers.

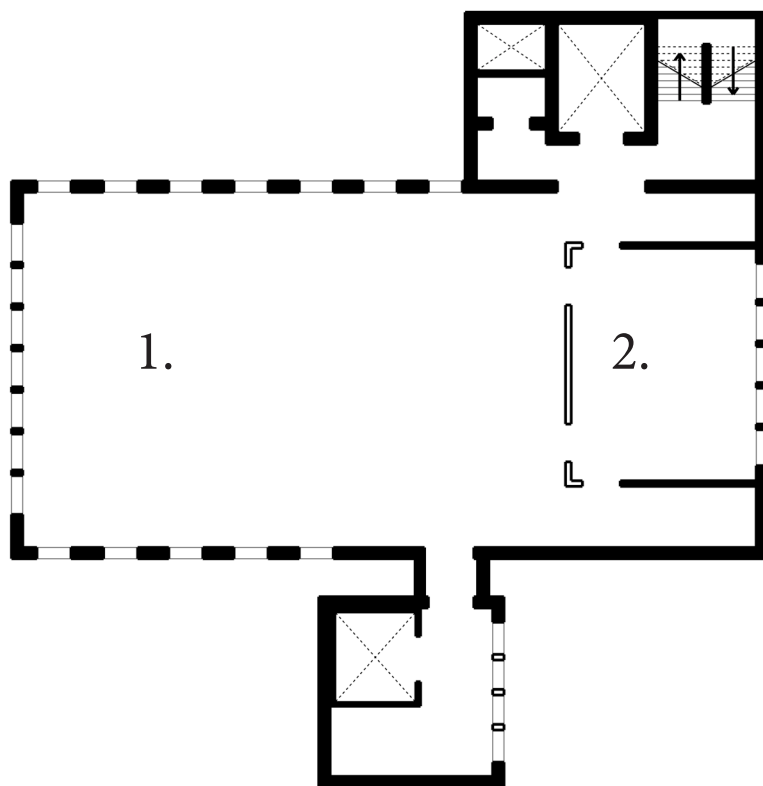
The Unconscious tower (The unconscious mind) is for me a tower where I can make the conscious tower come together with the idea of infinite potential. It doesn't need to be something unacceptable or unpleasant

1. Ankomst. ETG:1
  2. Spisesal. ETG: 2-3
  3. Kjøkken. ETG: 2-3
  4. Soverom.ETG: 4-9-(10)
  5. Bad, WC. ETG: ALLE.
  6. Auditorium / Samlingssal. ETG: Topp 4.
  7. Fellesområde. alle med bolig 4-9-(10) og de neden for.
  8. Basketballbane. ute bak. ground level.
  9. Rektor Bolig.
  10. Rekkehus 1A.
  11. Hybel 1B.
  12. Kontorer Kjøkken.
  13. Kontorer drift. ETG: 1-2.
  14. Rom for teoretisk undervisning.ETG: 4-5
  15. Rom for å spille sammen. ETG: 5-6
  16. Rom for å spille alene. ETG: 6-7
  17. Rom for å spille med lærer. ETG: 7-8
- 
18. Rom for spesielle instrumentgrupper. ETG: 8-9.
  19. Rom for alle instrumentgruppene. ETG: 5-6
  20. Rom for et instrument. ETG: 6-7
  21. Rom for to instrument. ETG: 7-8
  22. Rom for tre instrument. 8-9-10
  23. Rom for fire instrument. 10-11.12
  24. Rom for fem instrument. 10-11-12
  25. Konserthus eller mer en 5 instrumenter. ETG: 12-13-14-15-16-17
  26. Instrumentverksted. ETG: 1-minus 1-minus 2
  27. Rom for å ta opp musikk. ETG: 3
  28. Rom for å stemme et instrumenter. ETG: 3-5-6-7-8-9-10.
  29. Ankomst leiligheter. ETG: 1.
  30. .Vei fra Skole til konserthus. ETG: heis
  31. Bussholdeplass.
  32. Treningsrom. ETG: 11.
  33. Lagerrom for instrumenter. ETG: Minus 1-4-9
  34. Bibliotek / Arkiv. ETG: 2-3-minus 1
  - 35.



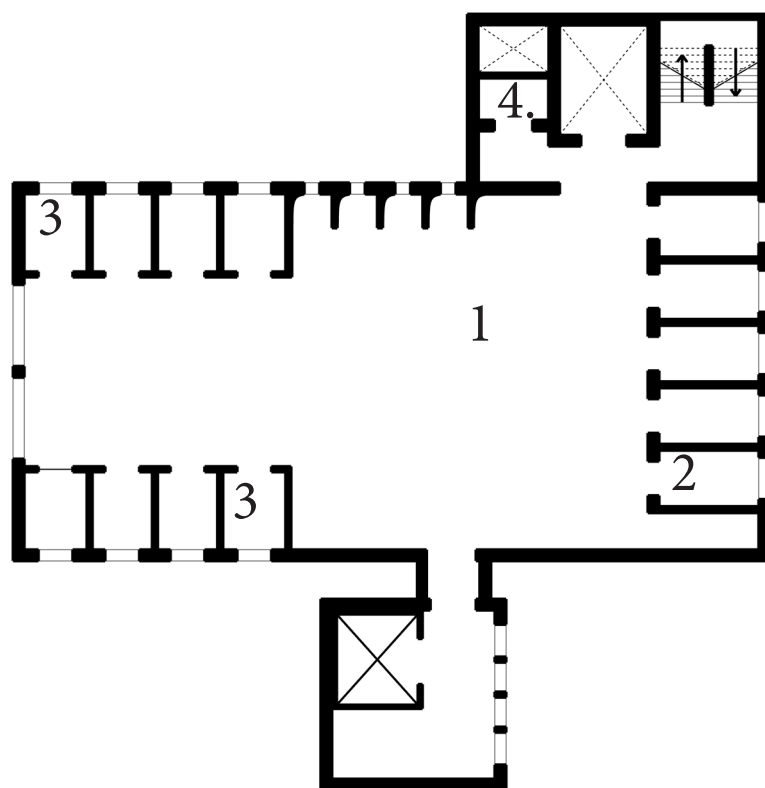
1. Inngang besøgende.

2. Inngang Studenter.



1.      Biblotek.

2.      Videorom.



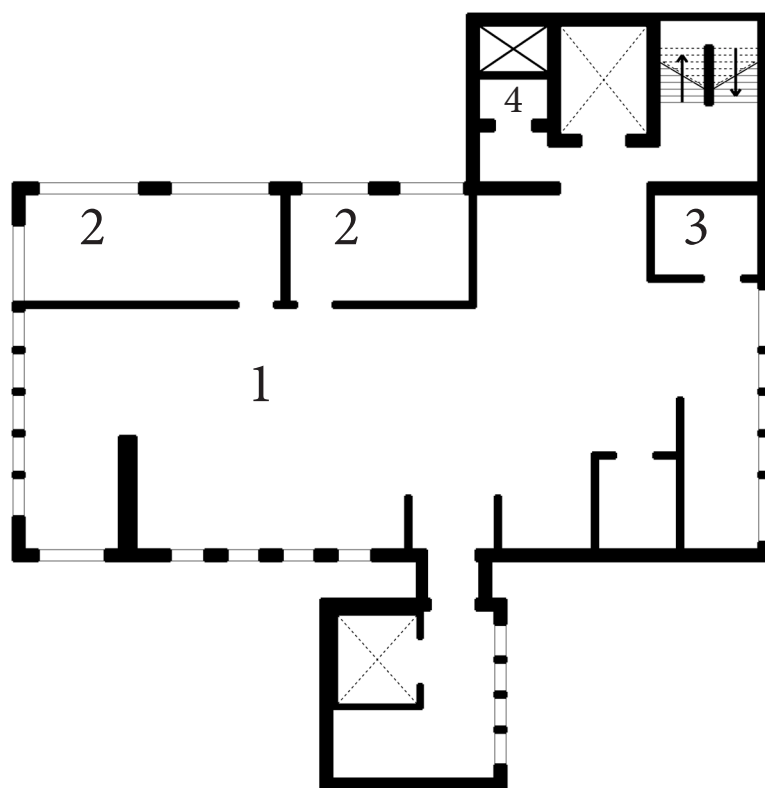
1. Biblotek.

2. rom for å lytte til musikk

3. Rom for å lese.

4. WC.



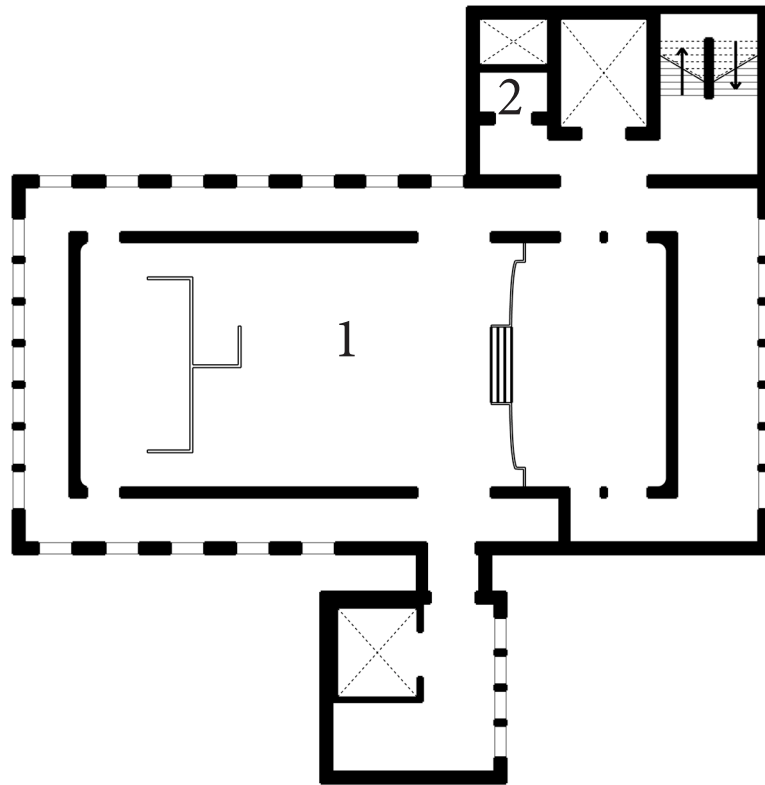


1. Administasjon.

2. Møterom.

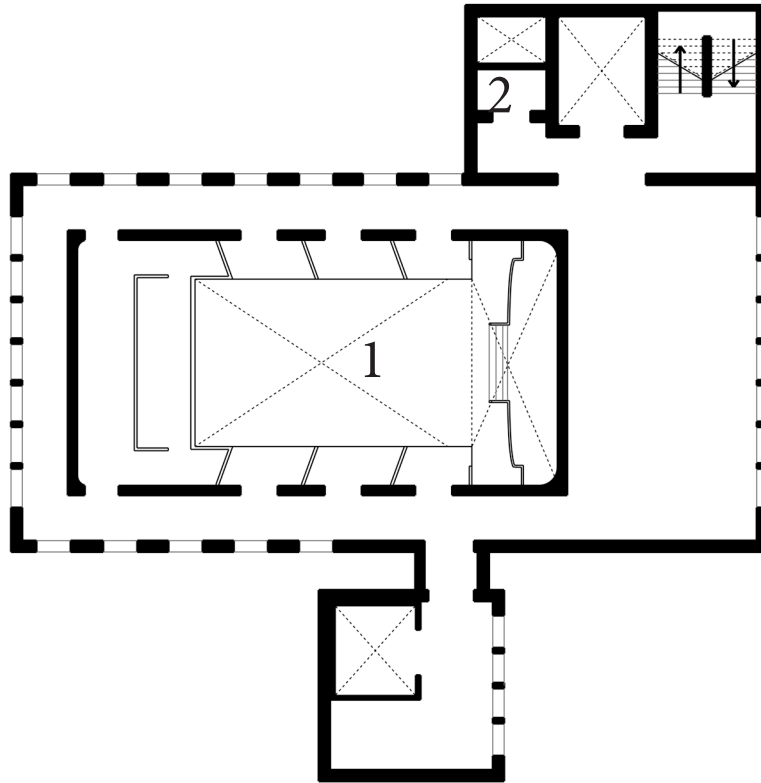
3. Lager

4. WC.



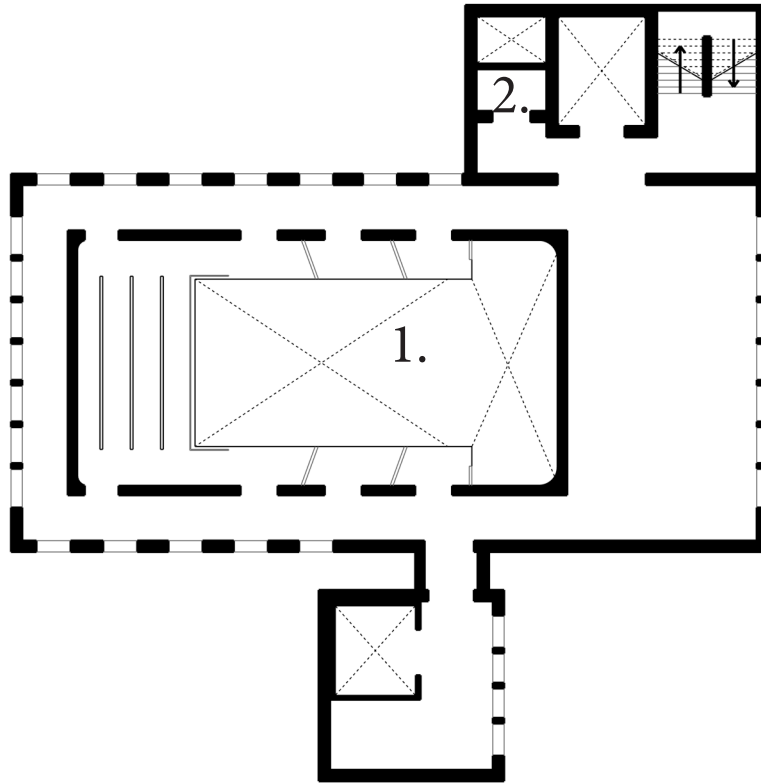
1. Konzertsal.

2. WC.



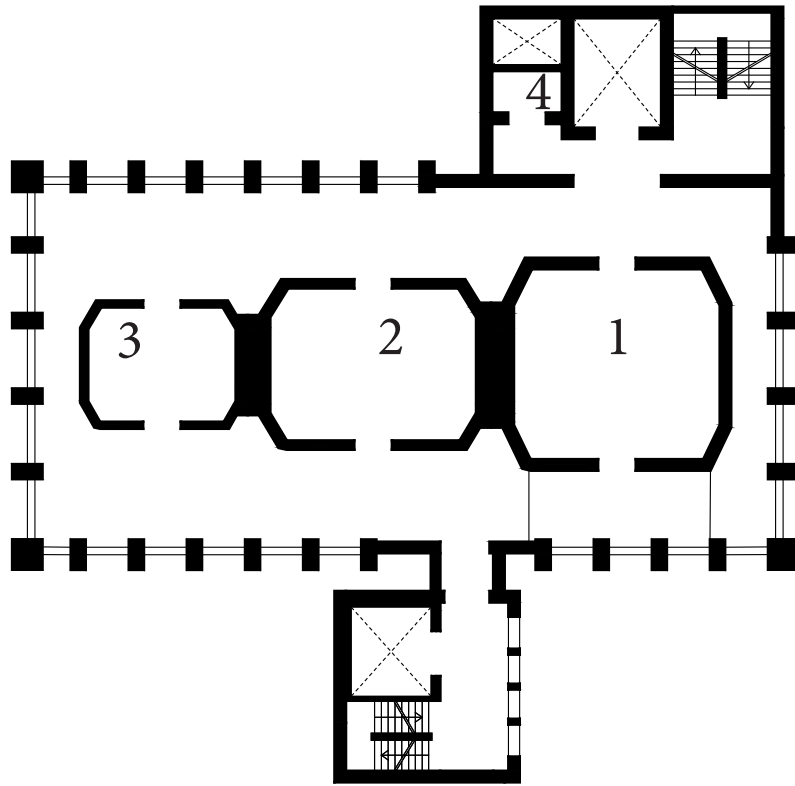
1. Konzertsal.

2. WC.

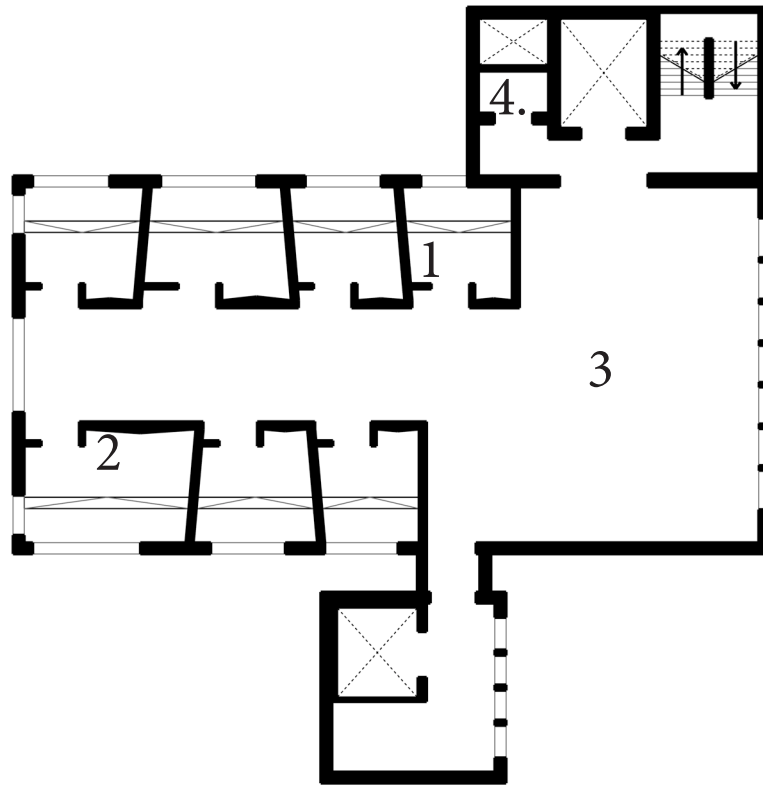


1. Konzertsal.

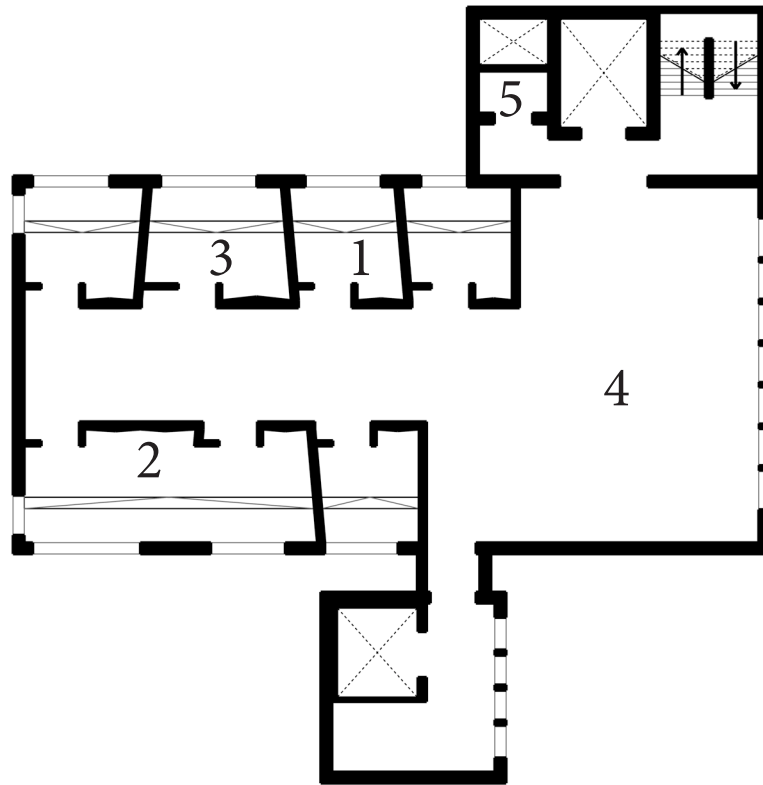
2. WC.



1. Slagverk. 8 personer.
2. Slagverk. 6 personer.
3. Slagverk. 4 personer.
4. WC.



1. Rom for og spille 1-2 personer.
2. rom for å spille 1-3 personer.
3. Flerbruks areale.
4. WC.



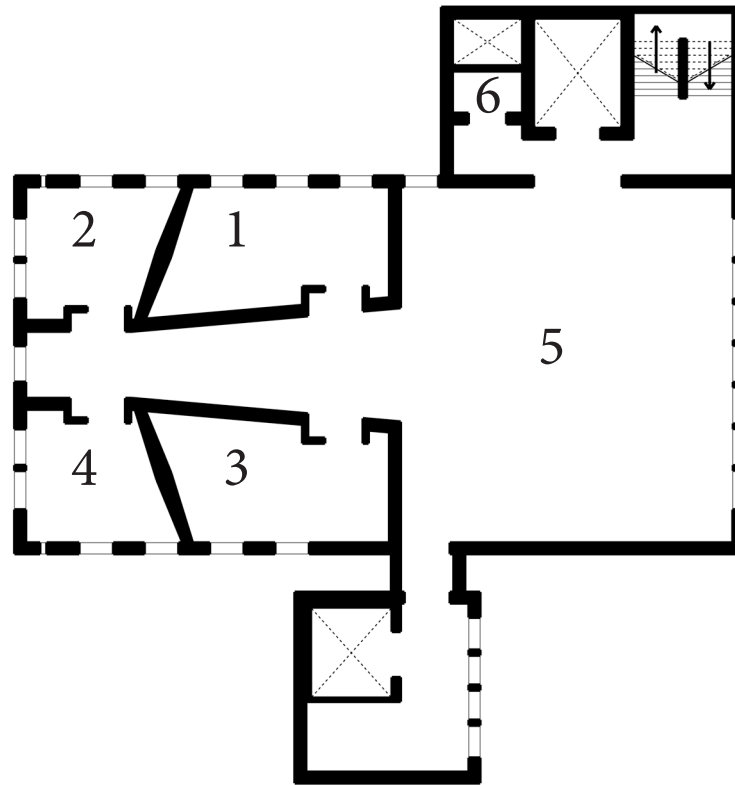
1. Rom for og spille 1-2 personer.

5. WC.

2. Rom for og spille 1-4 personer.

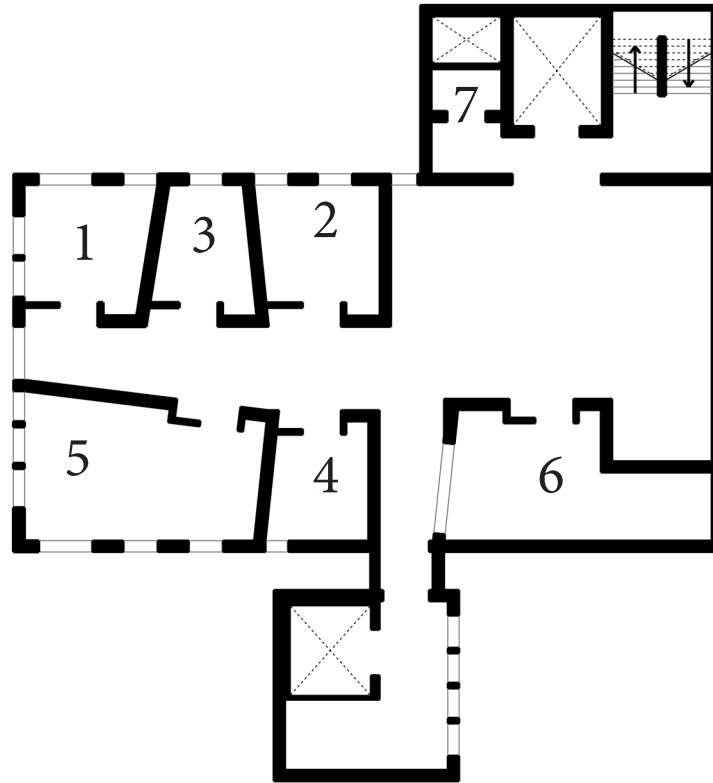
3. Rom for og spille 1-3 personer.

4. Flerbruks areale.

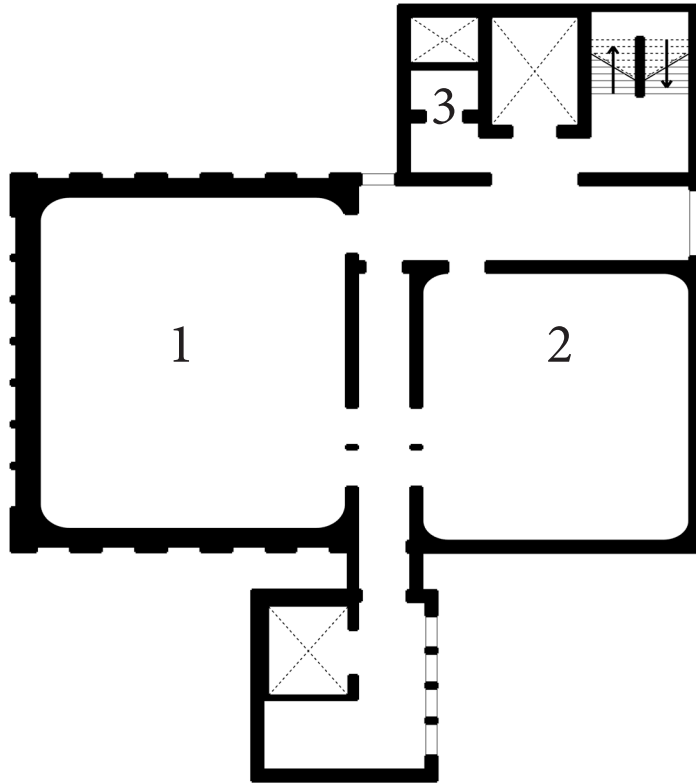


- |    |                                       |    |                   |
|----|---------------------------------------|----|-------------------|
| 1. | Rom for Klaverinstrumenter/<br>orgel. | 5. | Flerbruks areale. |
| 2. | Rom for Klaverinstrumenter/<br>orgel. | 6. | WC.               |
| 3. | Rom for Klaverinstrumenter/<br>orgel. |    |                   |
| 4. | Rom for Klaverinstrumenter/<br>orgel. |    |                   |





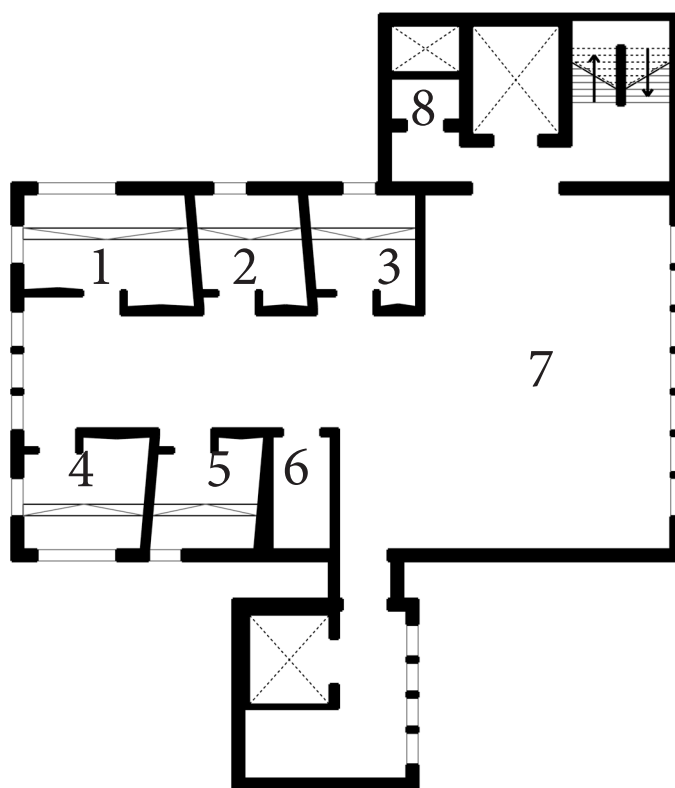
- |    |                               |    |   |
|----|-------------------------------|----|---|
| 1. | Stryke og blåse instrumenter. | 5. | Strykere og blåse instrumenter.                 |
| 2. | Stryke og blåse instrumenter. | 6. | Teoretisk undervisning for blåsere og strykere. |
| 3. | Stryke og blåse instrumenter. | 7. | WC.   |
| 4. | Stryke og blåse instrumenter. |    |   |



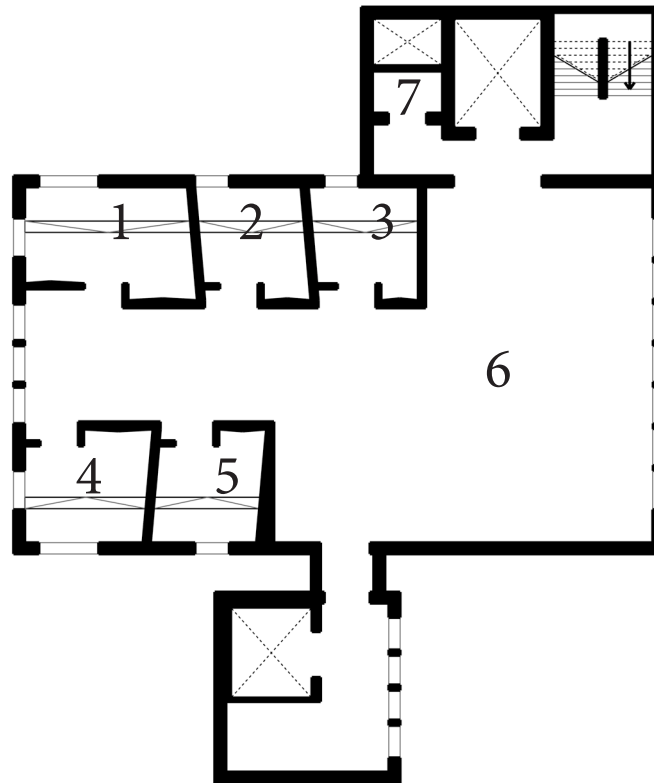
1. Kammermusikk sal 1.

2. Kammermusikk sal 2.

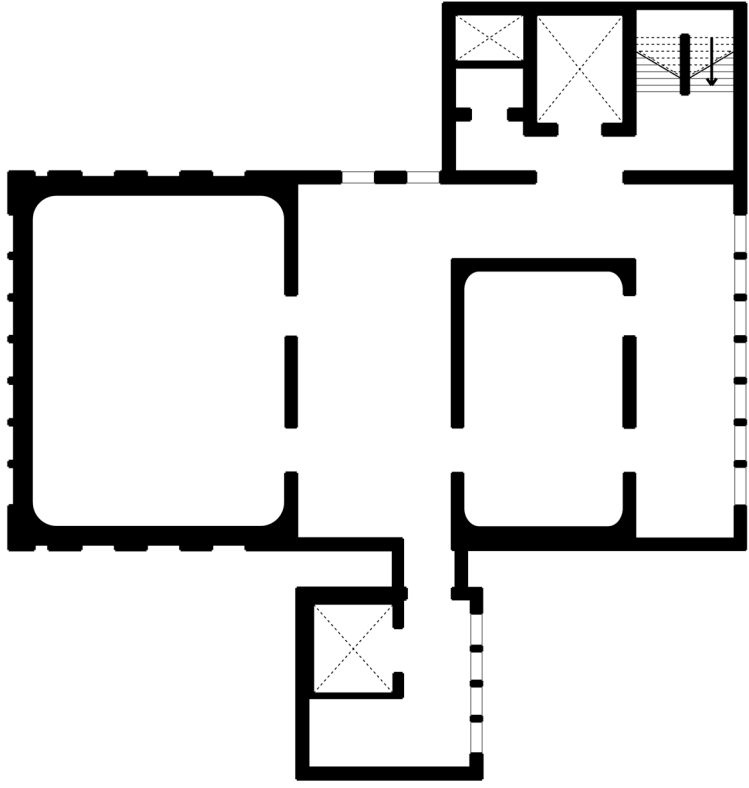
3. WC.

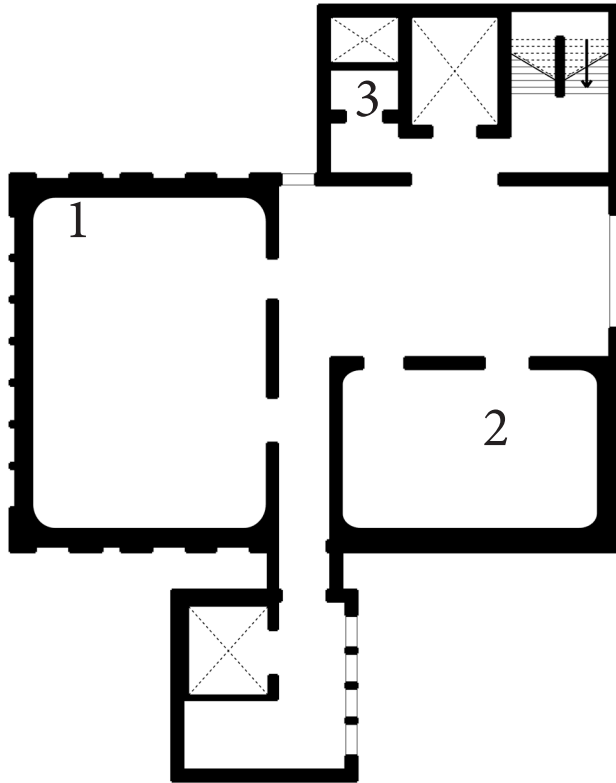


- |    |                                 |    |                                 |
|----|---------------------------------|----|---------------------------------|
| 1. | Rom for og spille 1-4 personer. | 5. | Rom for og spille 1-2 personer. |
| 2. | Rom for og spille 1-2 personer. | 6. | Lager.                          |
| 3. | Rom for og spille 1-2 personer. | 7. | Flerbruks areale.               |
| 4. | Rom for og spille 1-3 personer. | 8. | WC.                             |



- |    |                                 |    |                                 |
|----|---------------------------------|----|---------------------------------|
| 1. | Rom for og spille 1-3 personer. | 5. | Rom for og spille 1-2 personer. |
| 2. | Rom for og spille 1-2 personer. | 6. | Flerbruks areale.               |
| 3. | Rom for og spille 1-2 personer. | 7. | WC.                             |
| 4. | Rom for og spille 1-2 personer. |    |                                 |

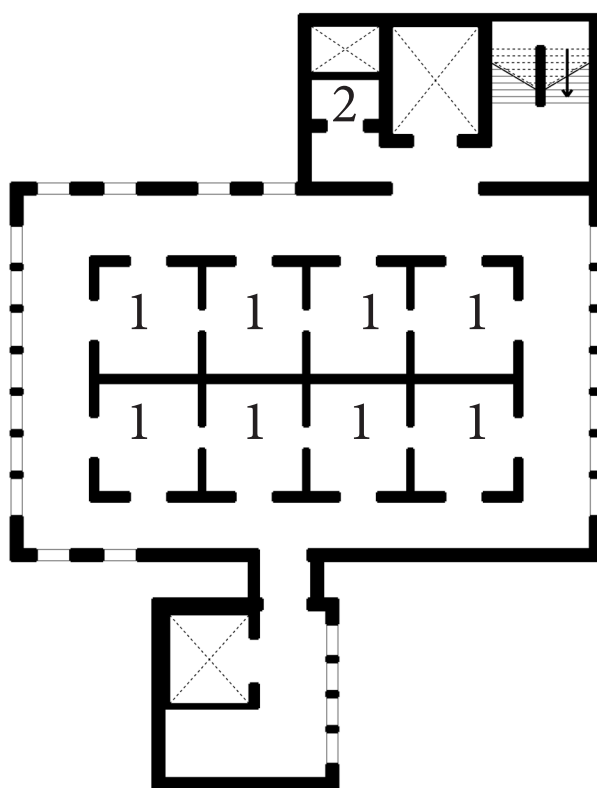




1. Kammermusikk sal 3.

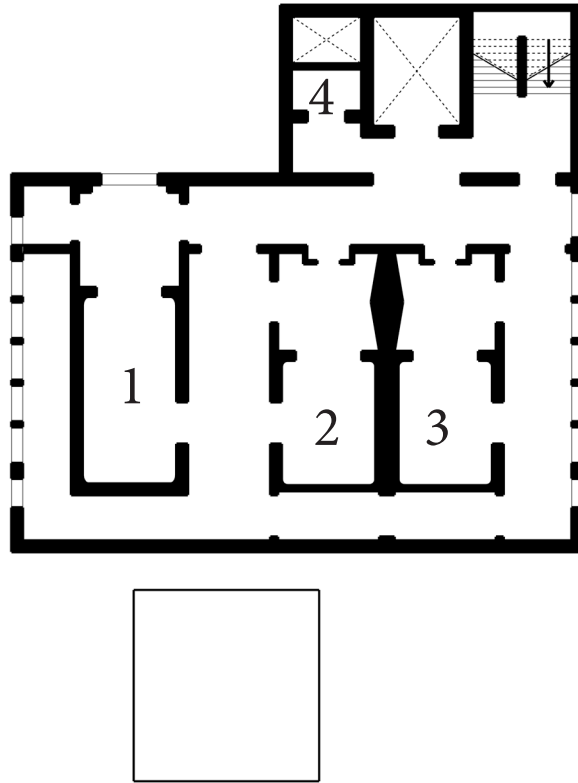
2. Kammermusikk sal 4.

3. WC.



1. Rom for veiledning.

2. WC.



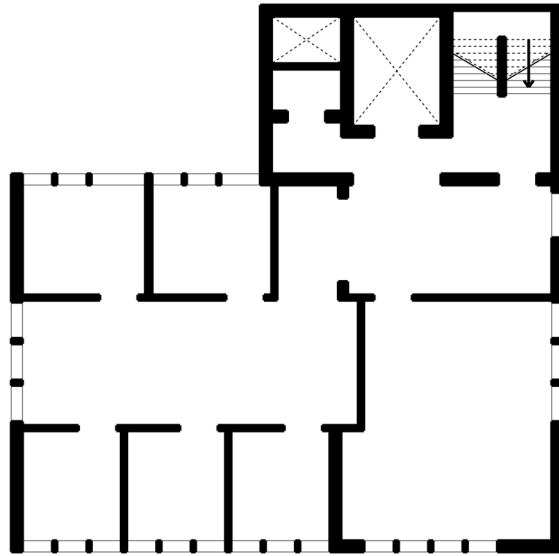
1. Musikk studio 1.

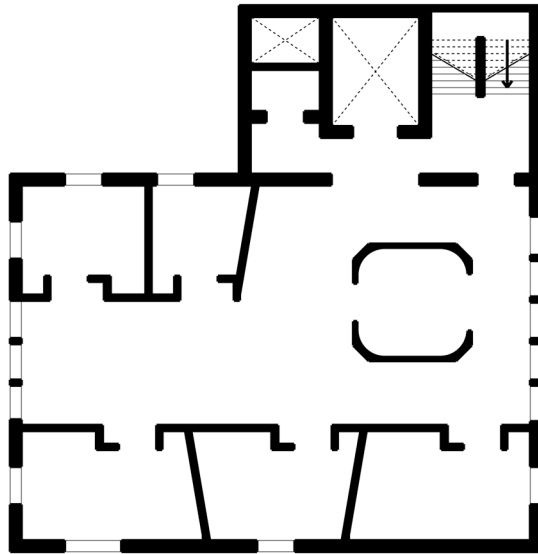
2. Musikk studio 2.

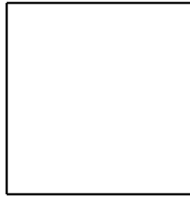
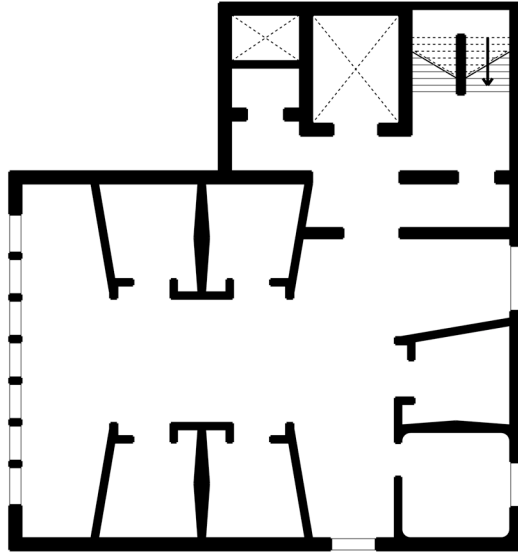
3. Musikk studio 3

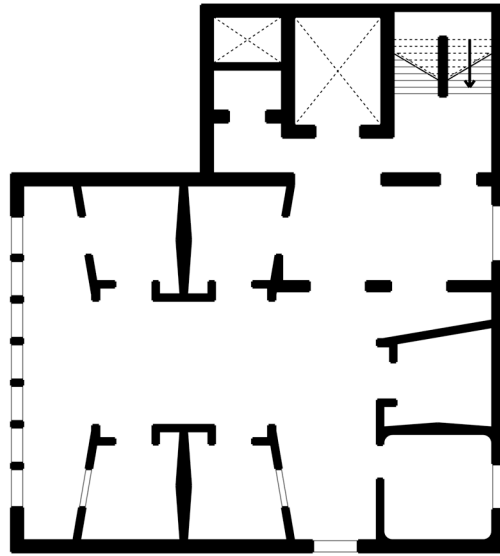
4. WC.

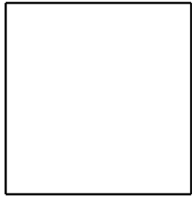
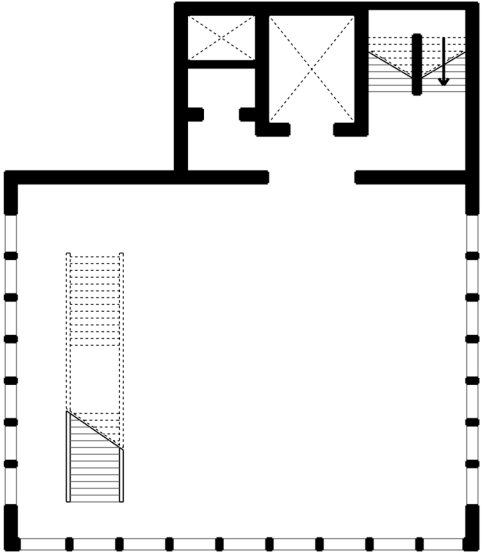


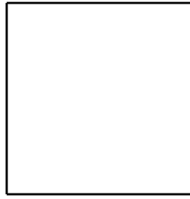
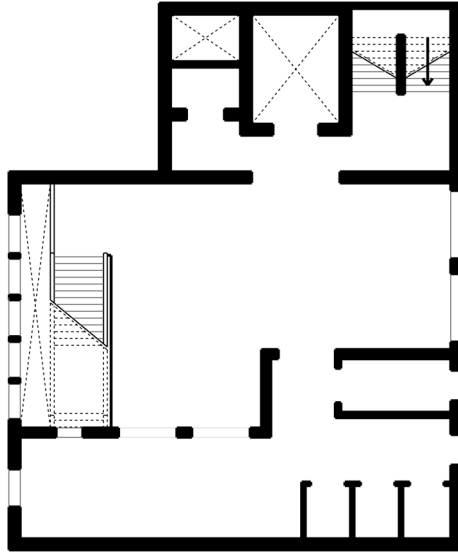


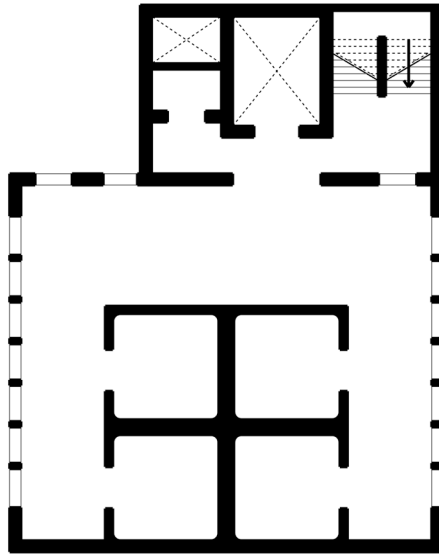


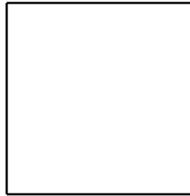
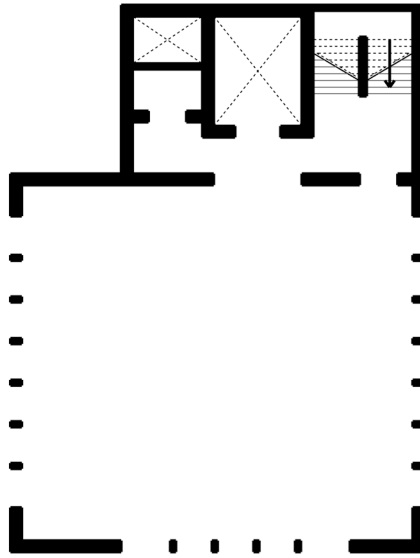




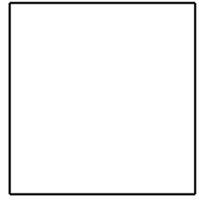
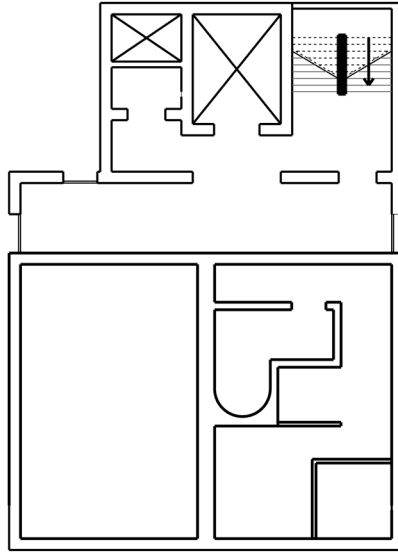


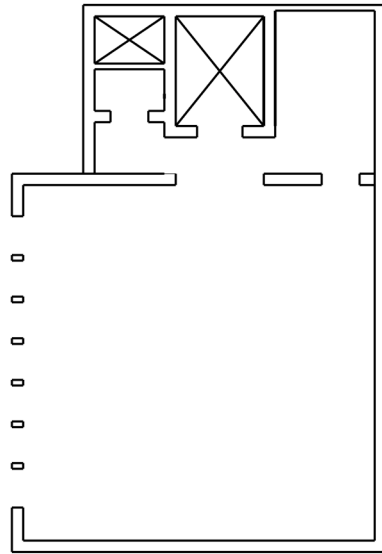


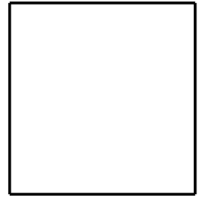
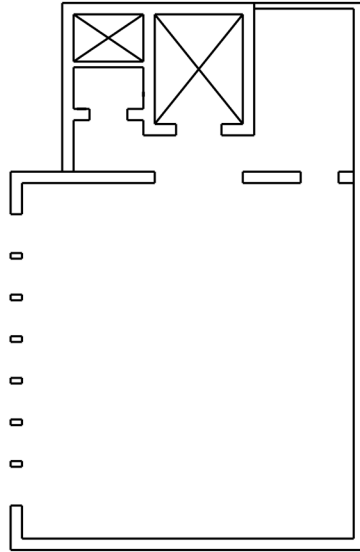


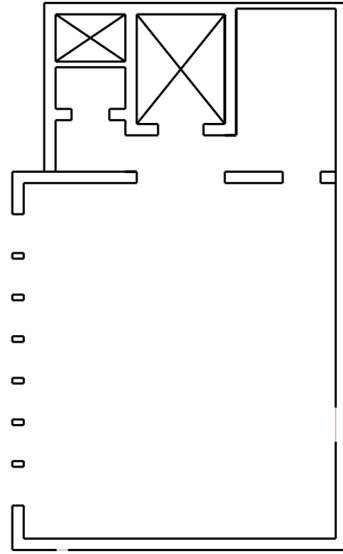


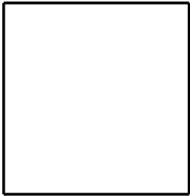
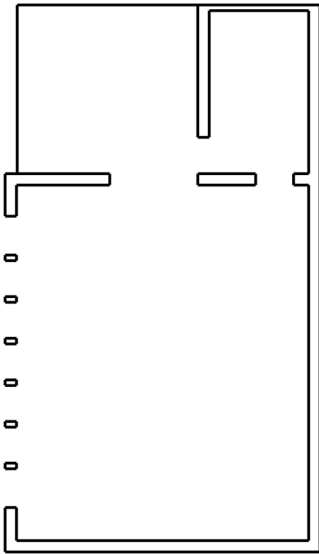


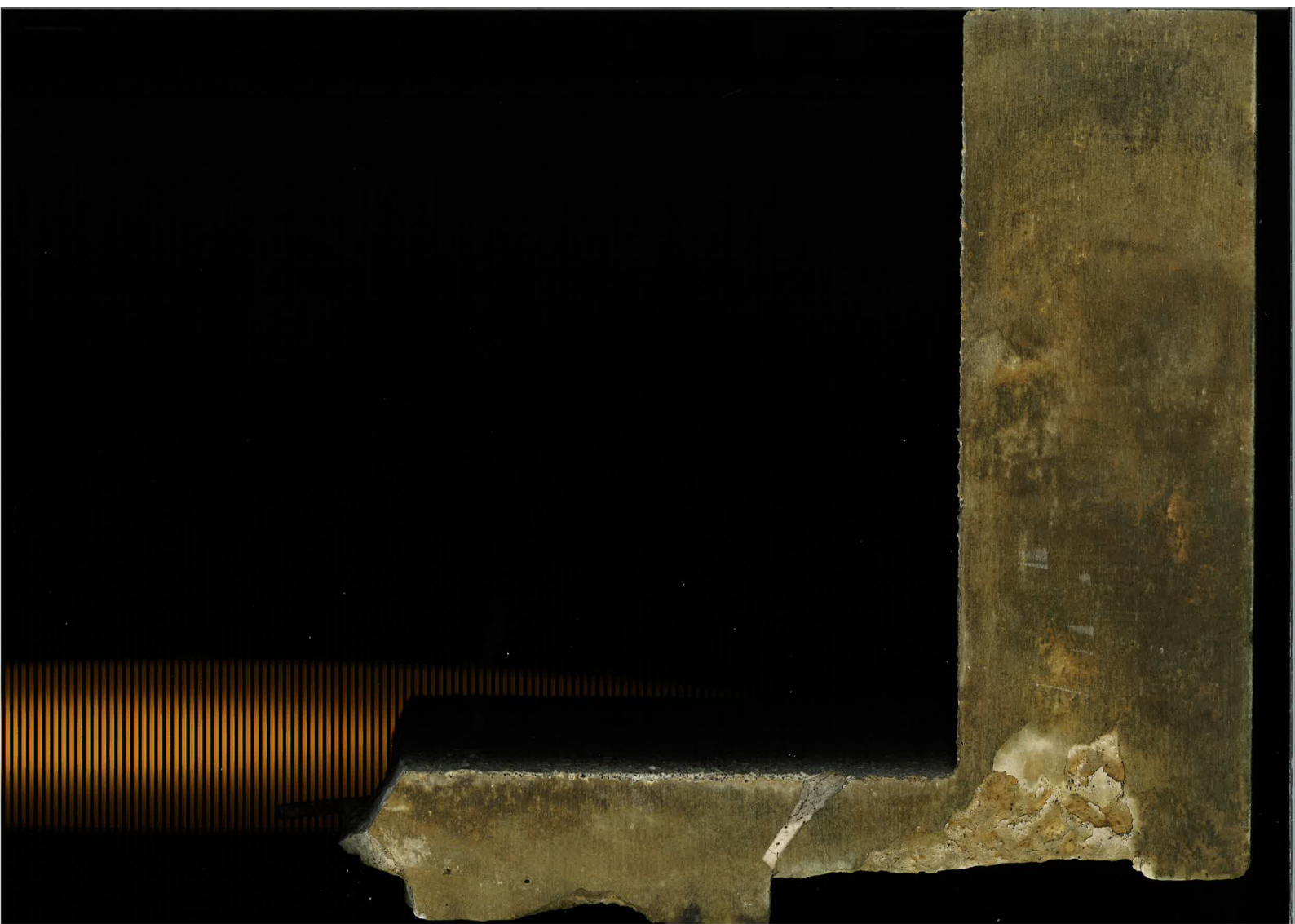


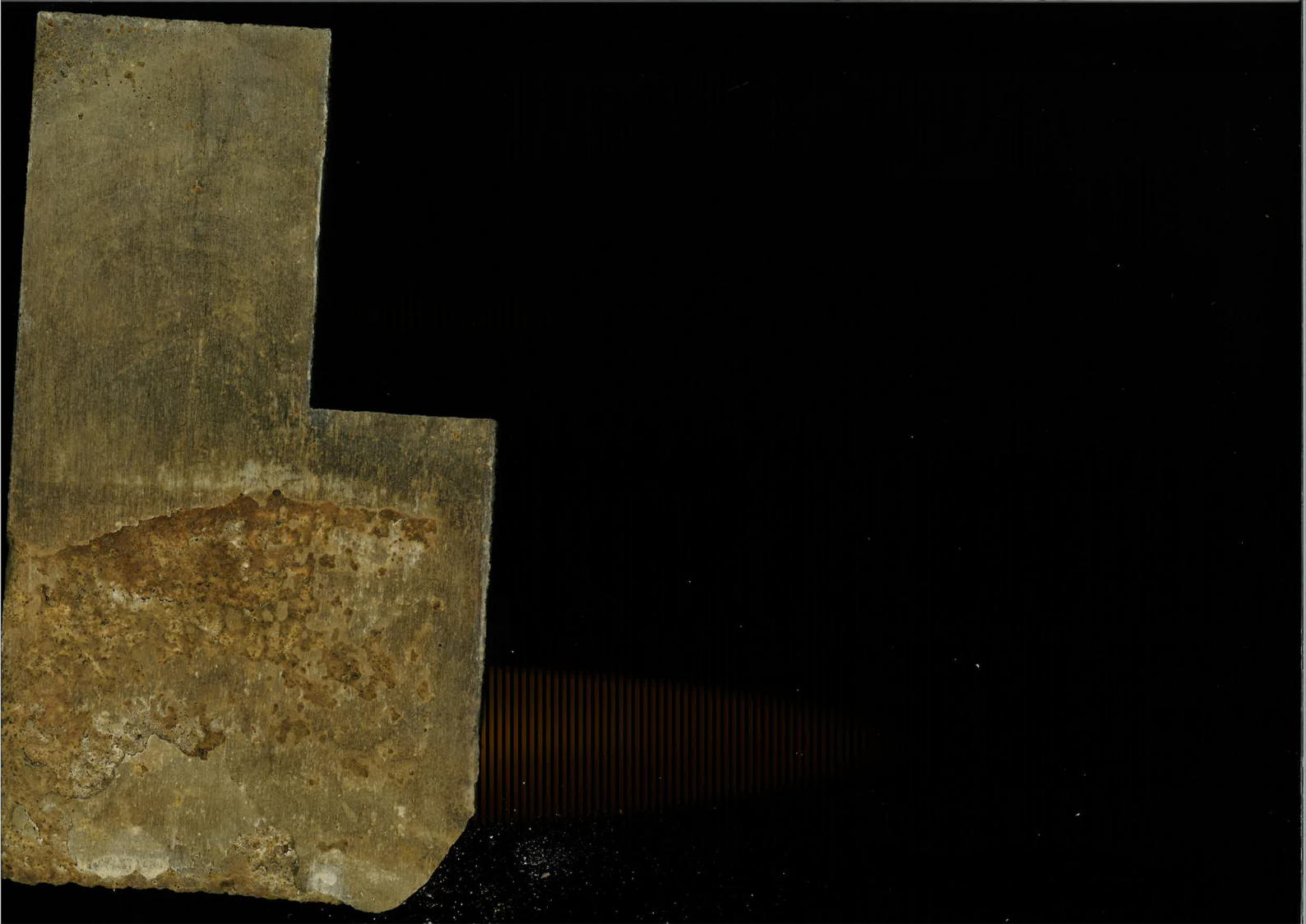






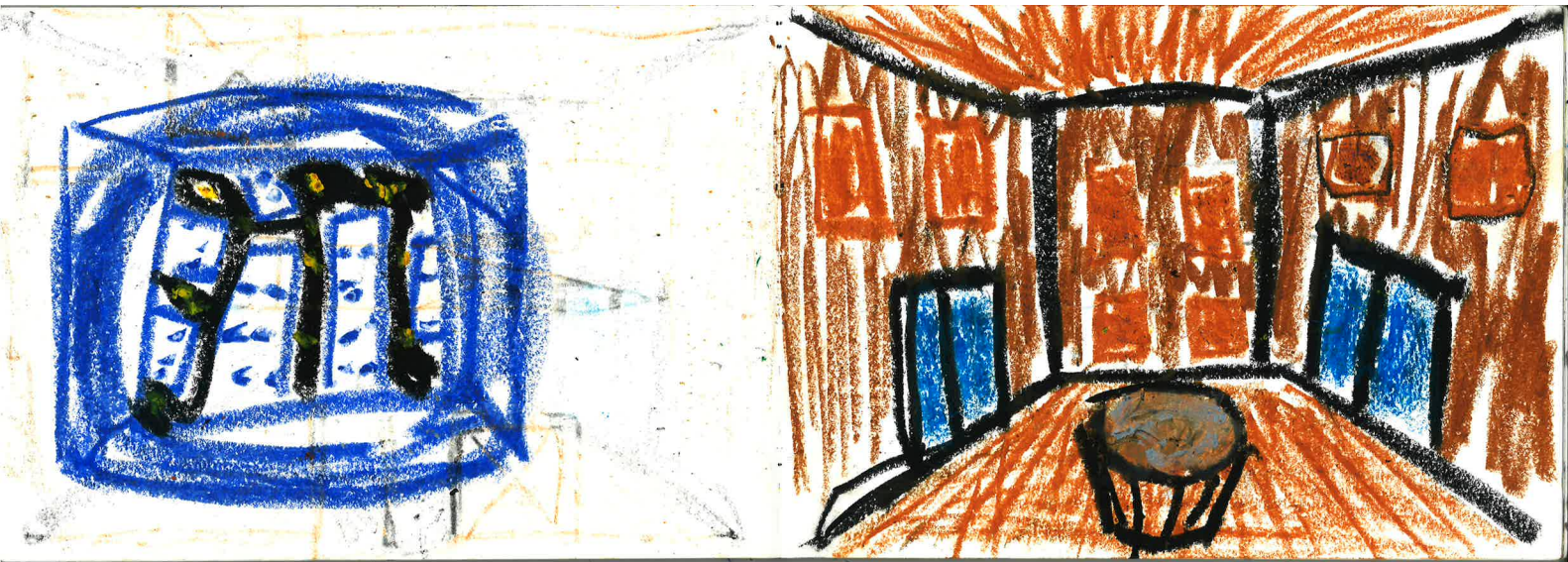


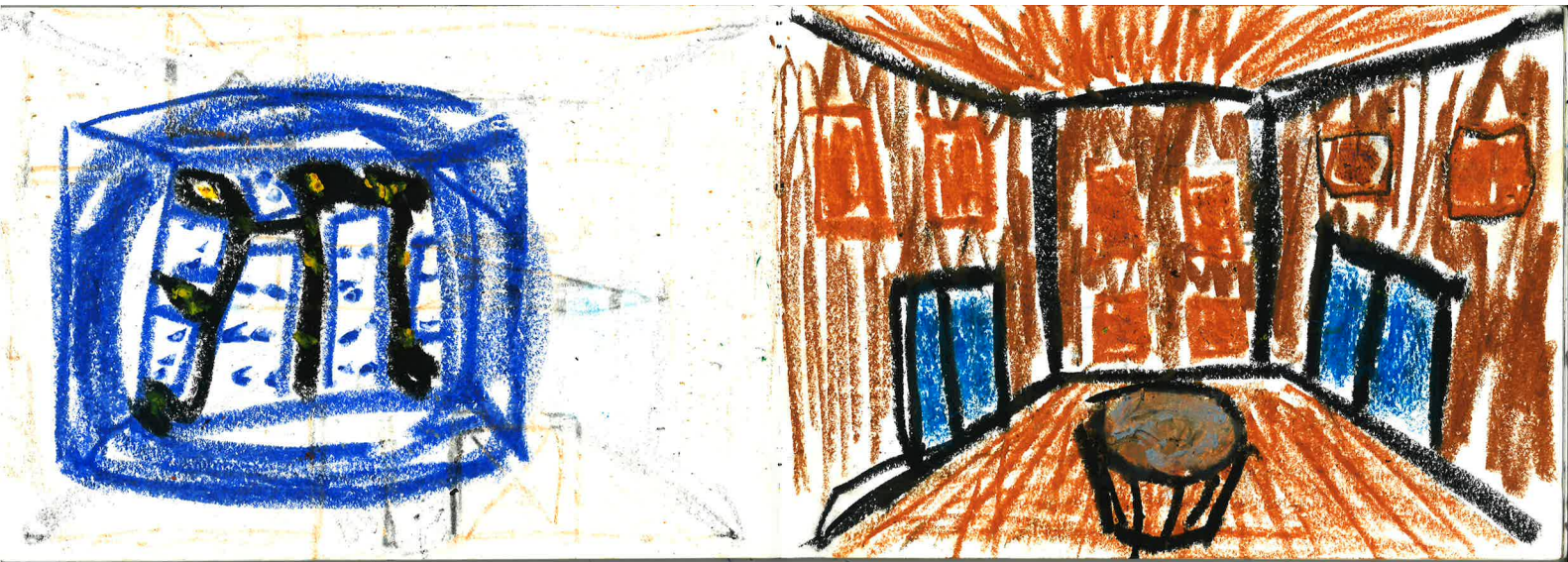




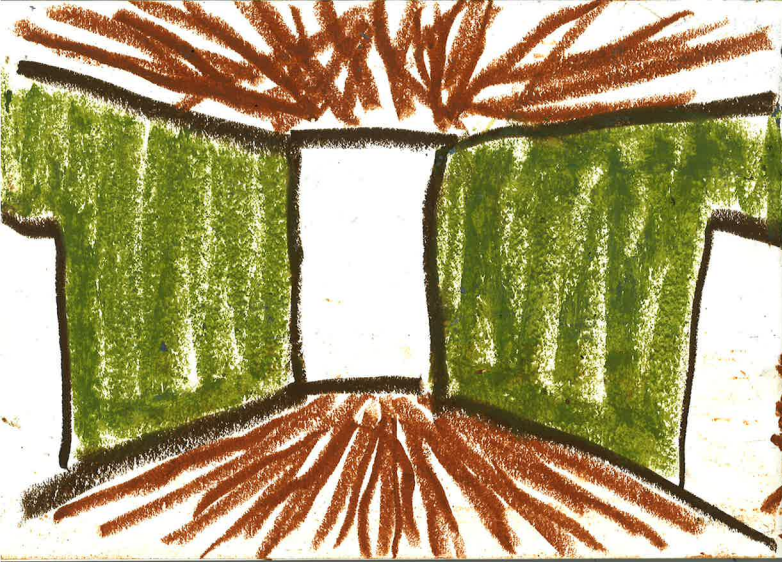


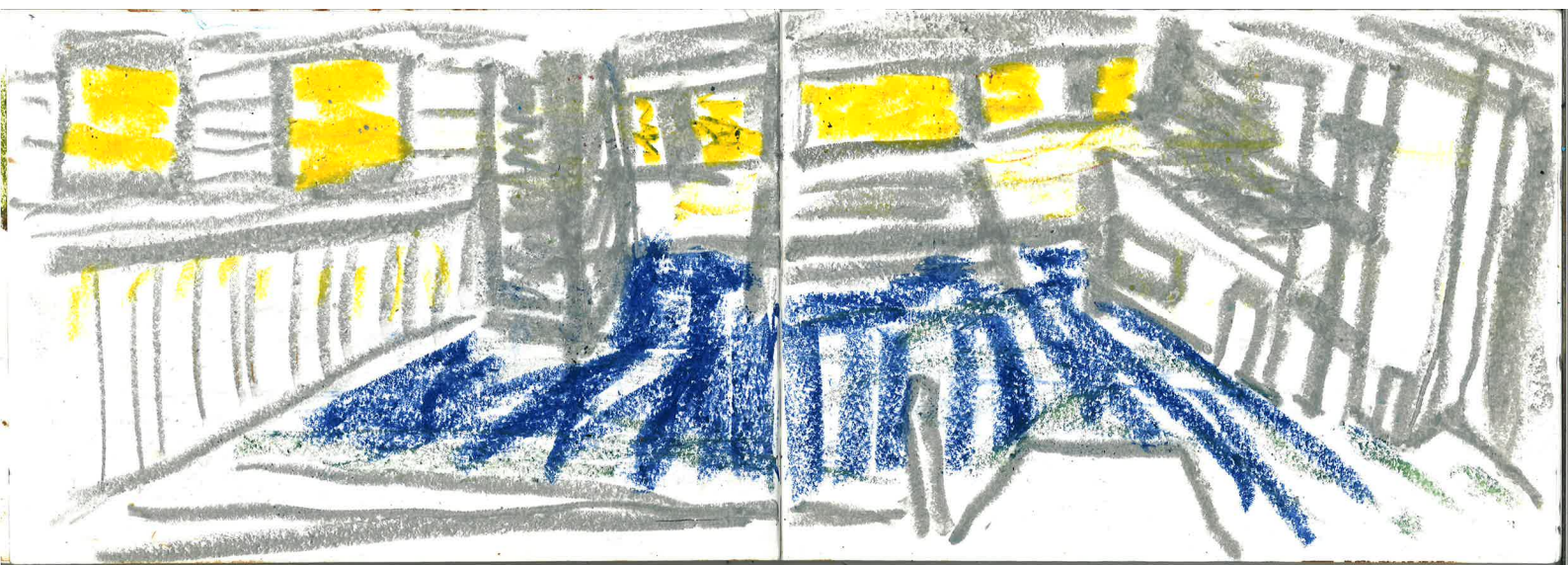


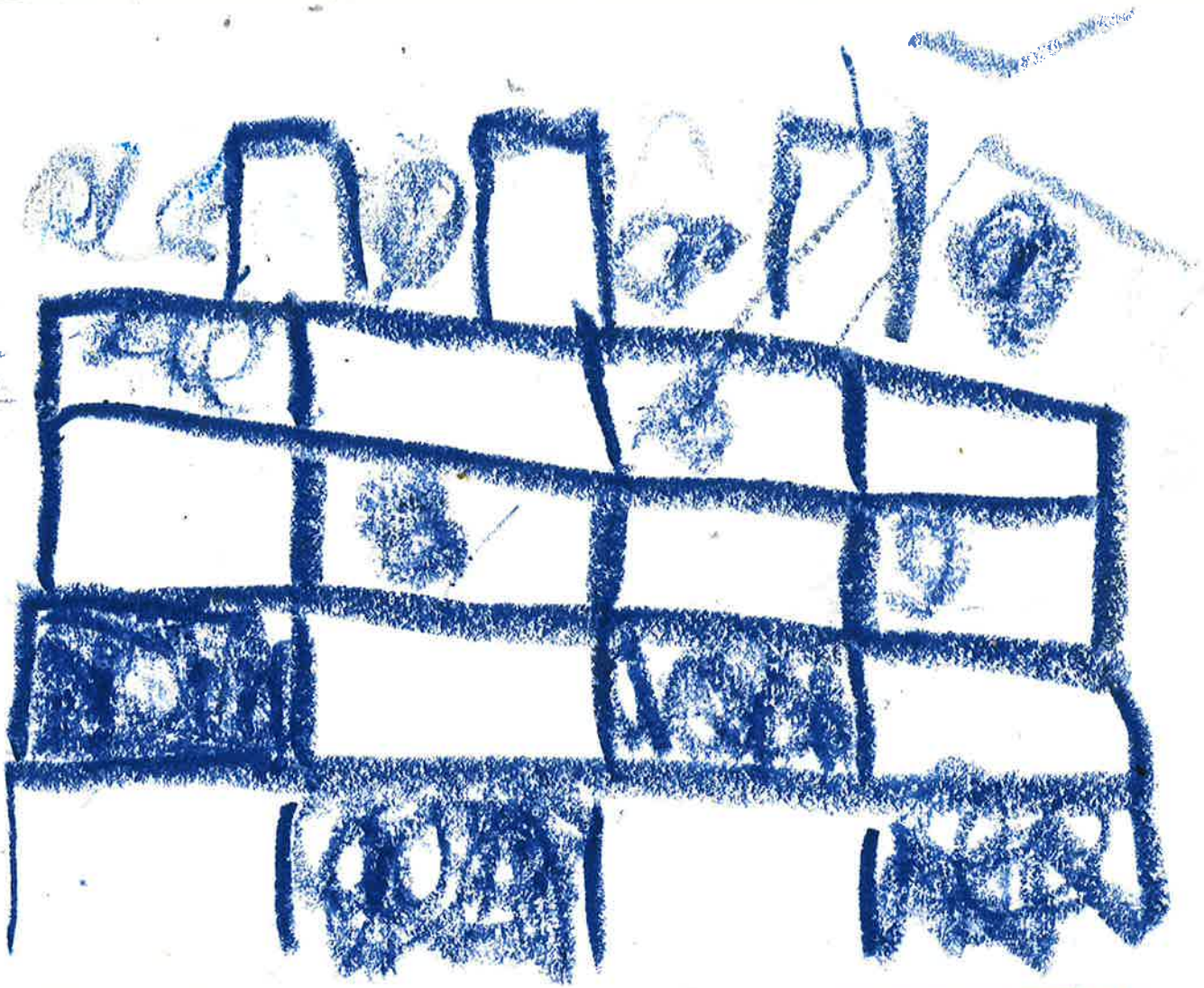


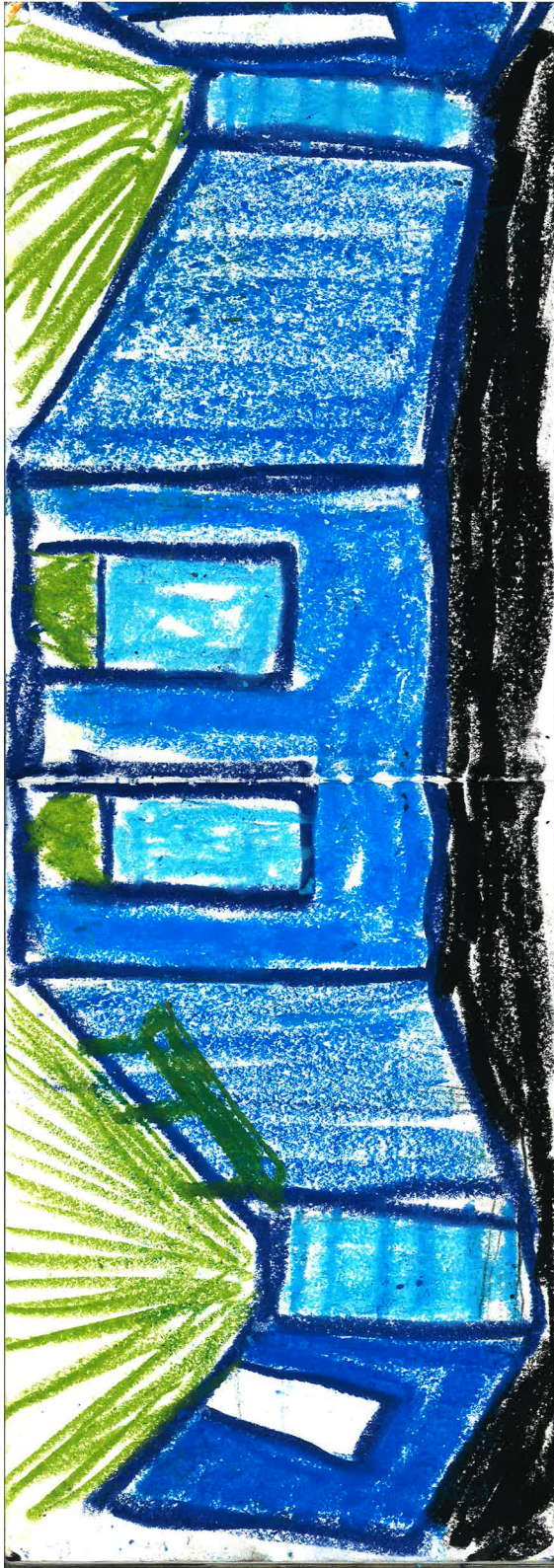


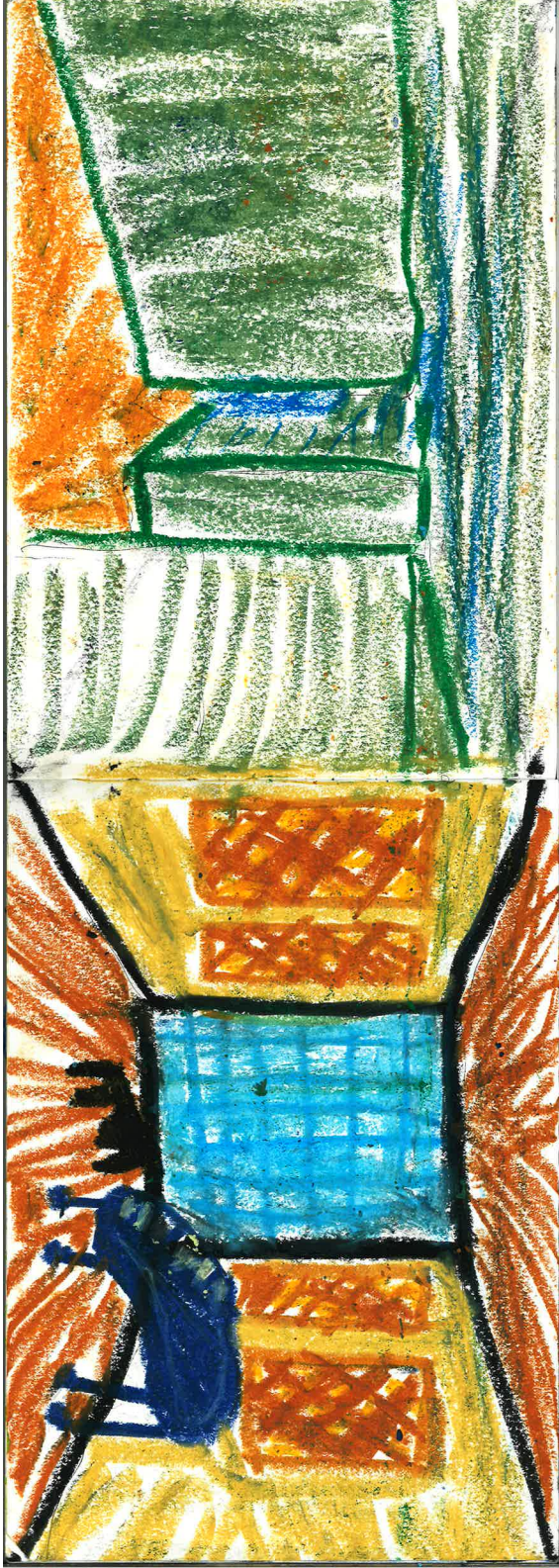




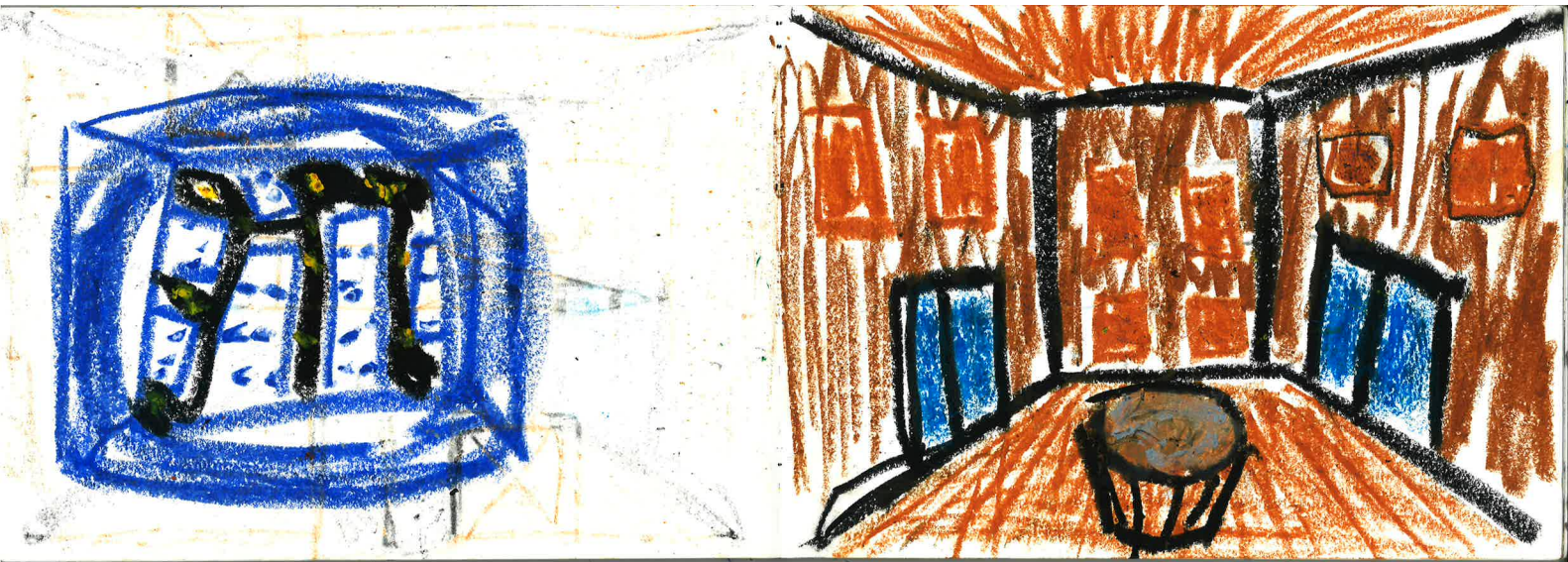


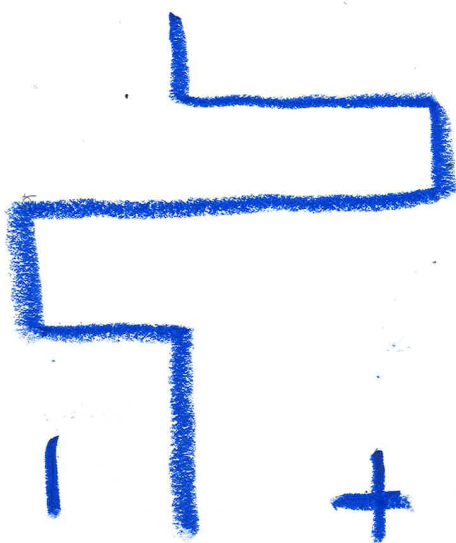
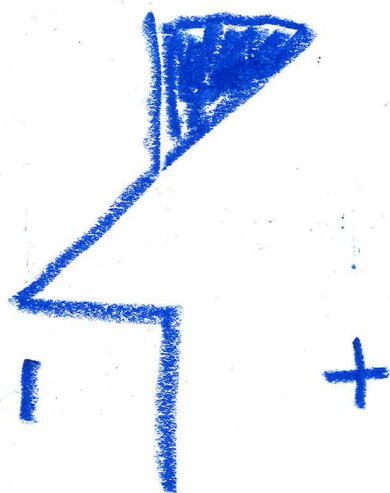


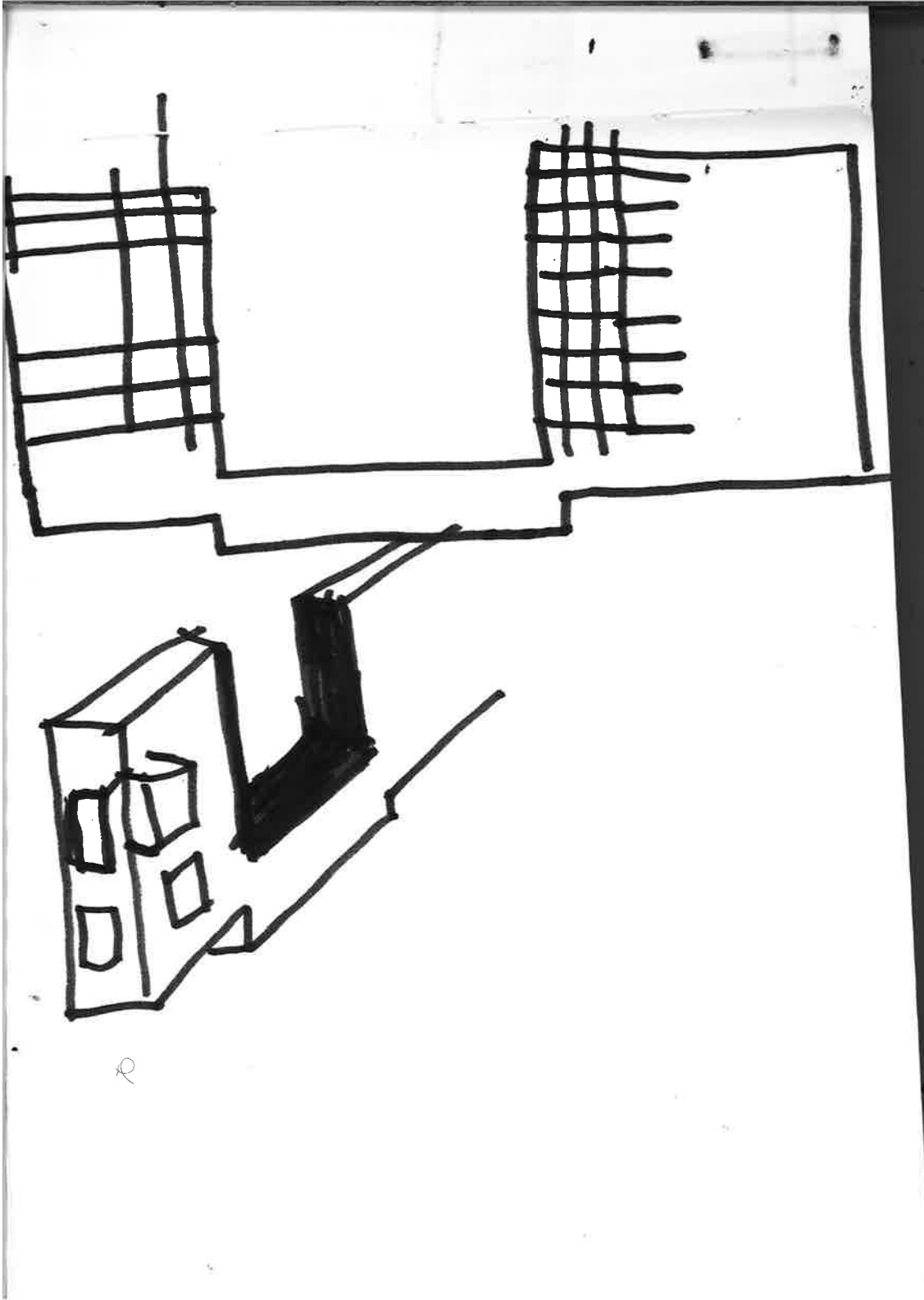


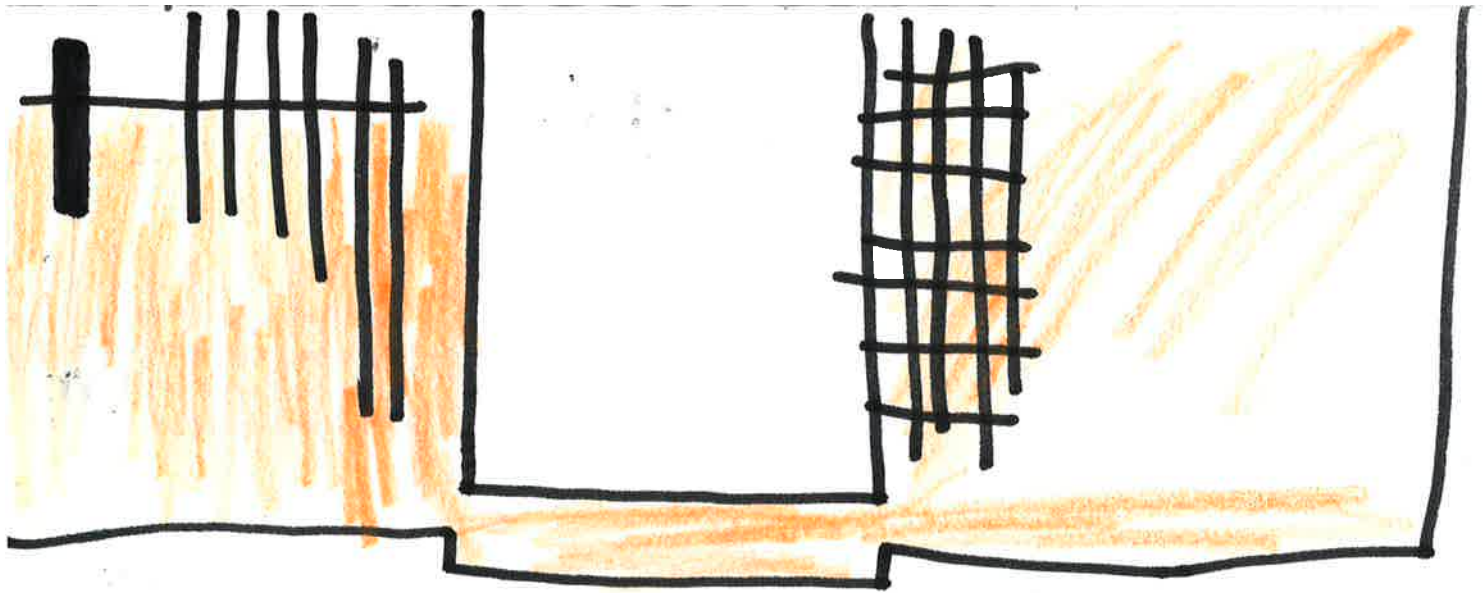


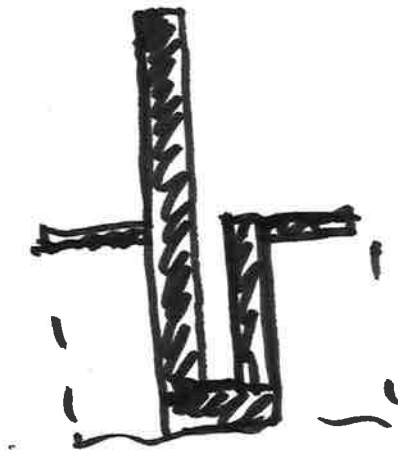












Tidligere planer.

