

landscape in motion

recomissioning Andøya Air Station

site presentation

context

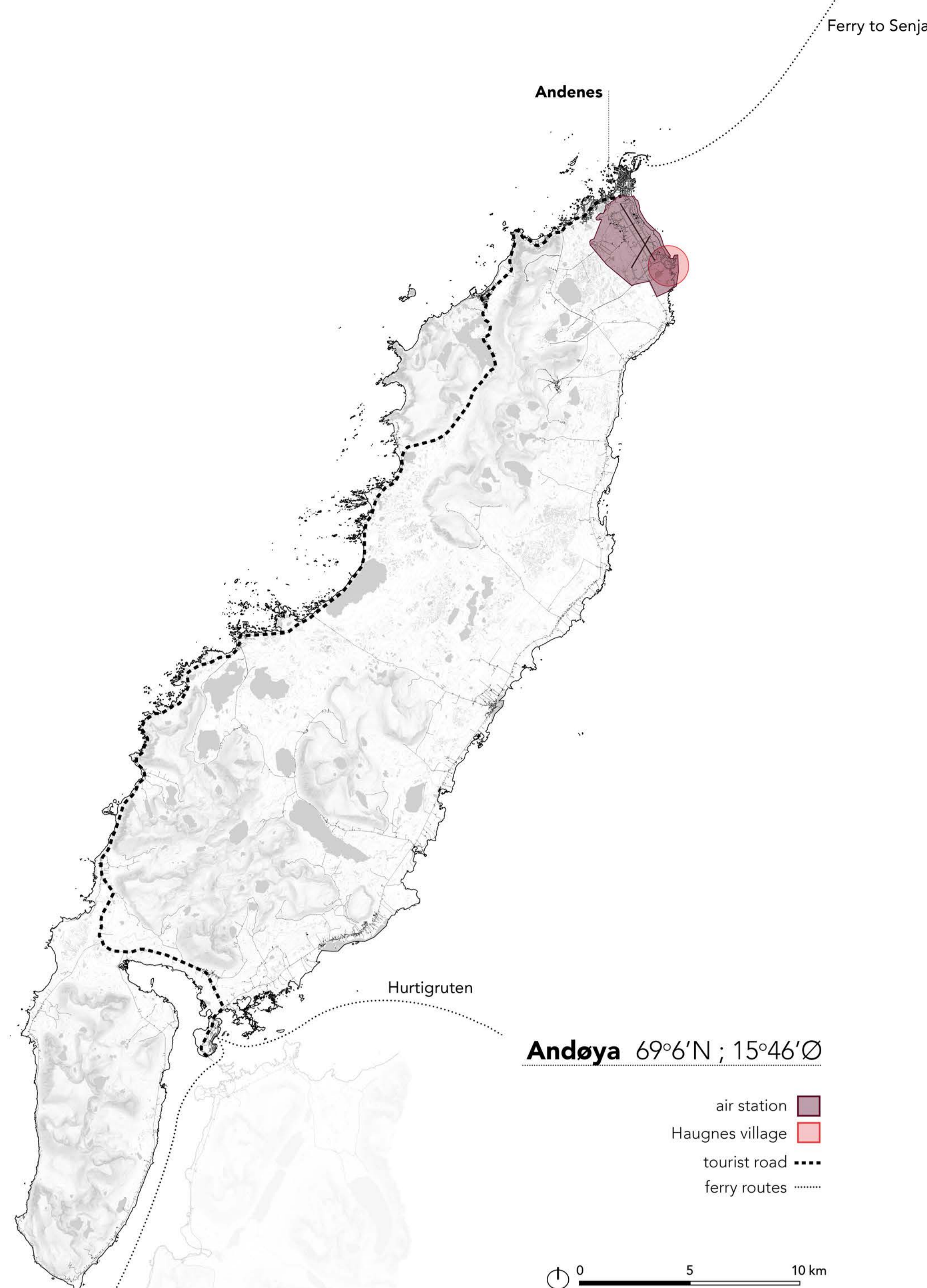
The Andøya Air Station is situated at the Northern tip of the Andøya island, next to the town of Andenes. It was built in the 1950s to fulfill NATO's interests during the Cold War, and covers approximately 10.1 km². A portion of the air base used to be home to Haugnes, a village that was entirely expropriated during the construction process, but that still lives strongly in the memory of its former inhabitants.

Following a restructuring of defense activities, the air base is now slated for closure in 2023, a fate shared by many other bases around Norway. The air base doubles as a civilian airport that will remain active.

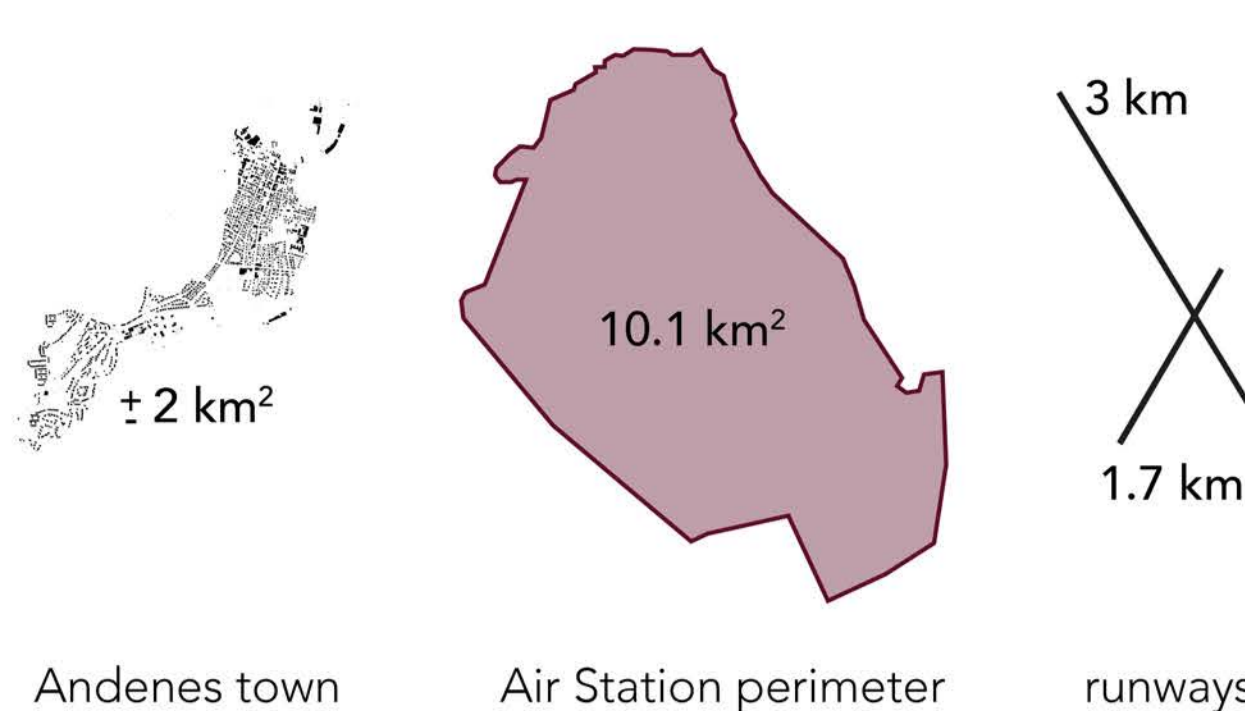
The air base has been the most important employer of Andøy kommune, and the loss of the military activities weighs heavily on a fragile economy and declining population. By decommissioning the military functions of the Andøya Air Station, the Norwegian air force is leaving behind an extensively transformed site, and a community facing an uncertain future.

This project investigates how the manmade and natural materials and processes at play in this constructed nature can be harnessed as resources that instigate a transformation of the site and enable a public reclamation of the space by informing a progressive implementation of new uses for both locals and tourists.

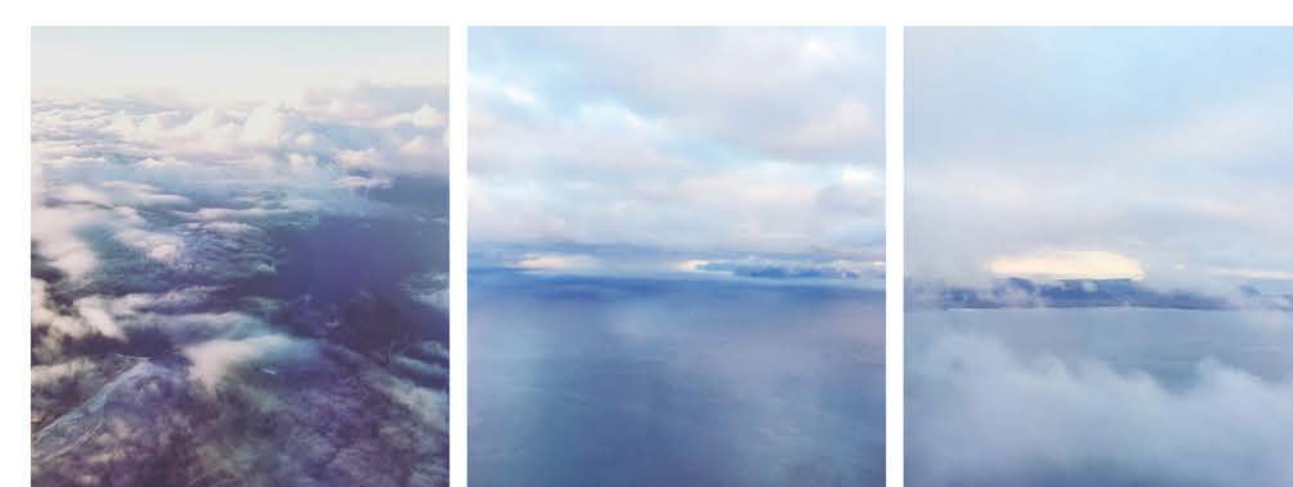
By developing an understanding of the site's dynamics, this project envisions a decommissioning/recomissioning process that allows for future scenarios to unfold, while preserving the inherent and inherited values of the site.



site dimensions



perspectives on the site



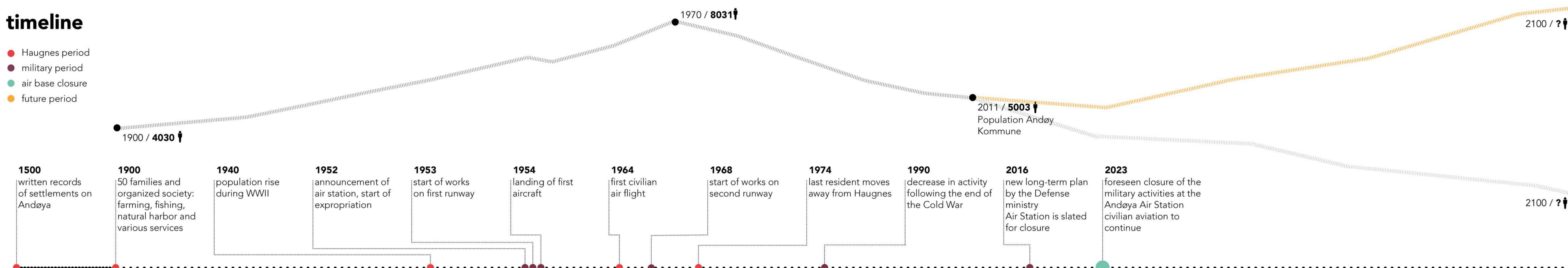
flying in



driving by

timeline

- Haugnes period
- military period
- air base closure
- future period



uses and users

- historic uses of landscape
- military related uses
- new uses



decommissioned air base



material resources

built structures

- buildings
- plane hangars
- underground facilities
- lighting
- terrestrial fencing
- underwater fencing

manmade grounds

- runways and taxiways
- asphalt roads
- gravel trails and areas
- informal trails

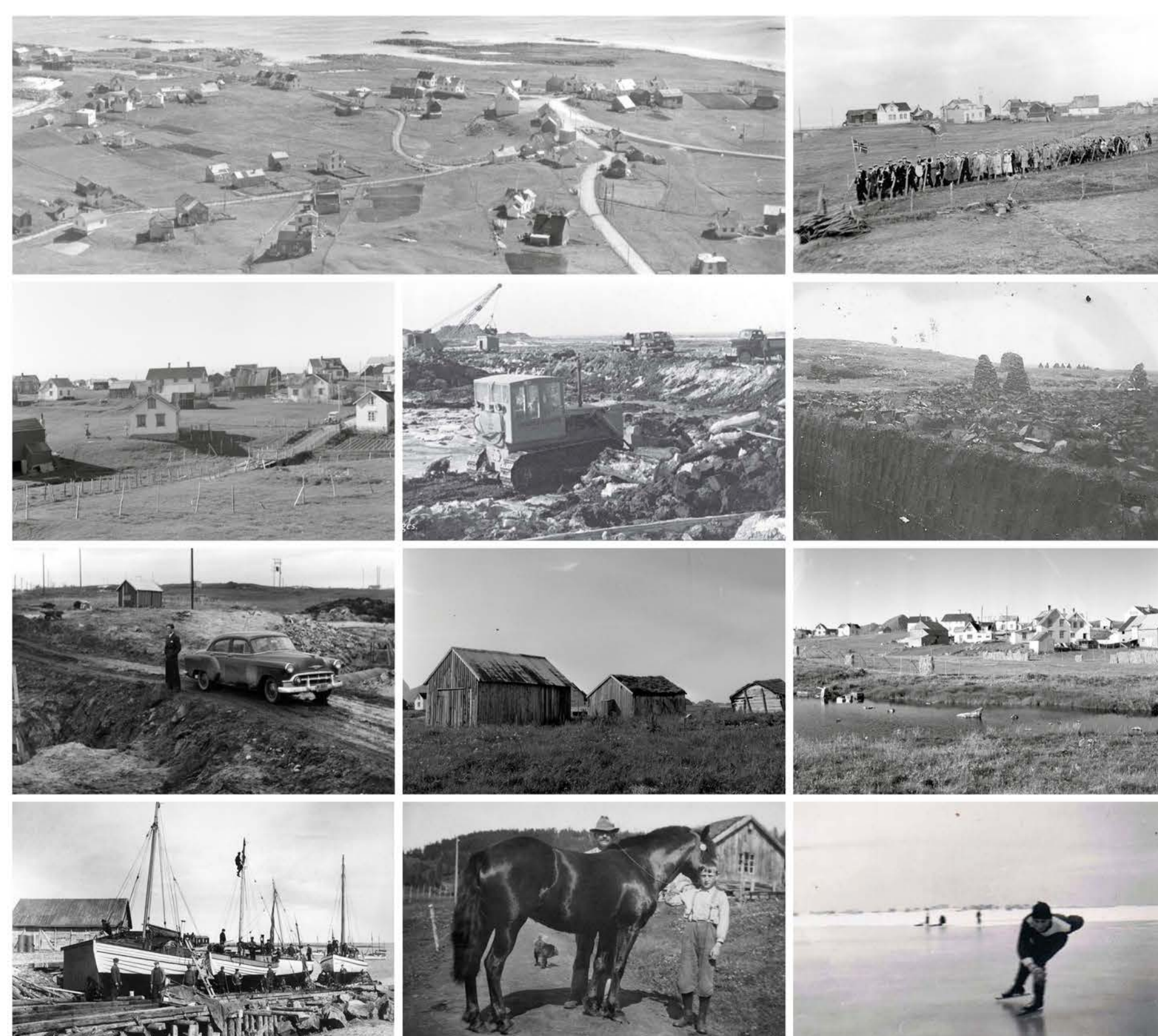
vegetation

- controlled lawn
- tall grasses
- shrubs and trees
- peat
- sand

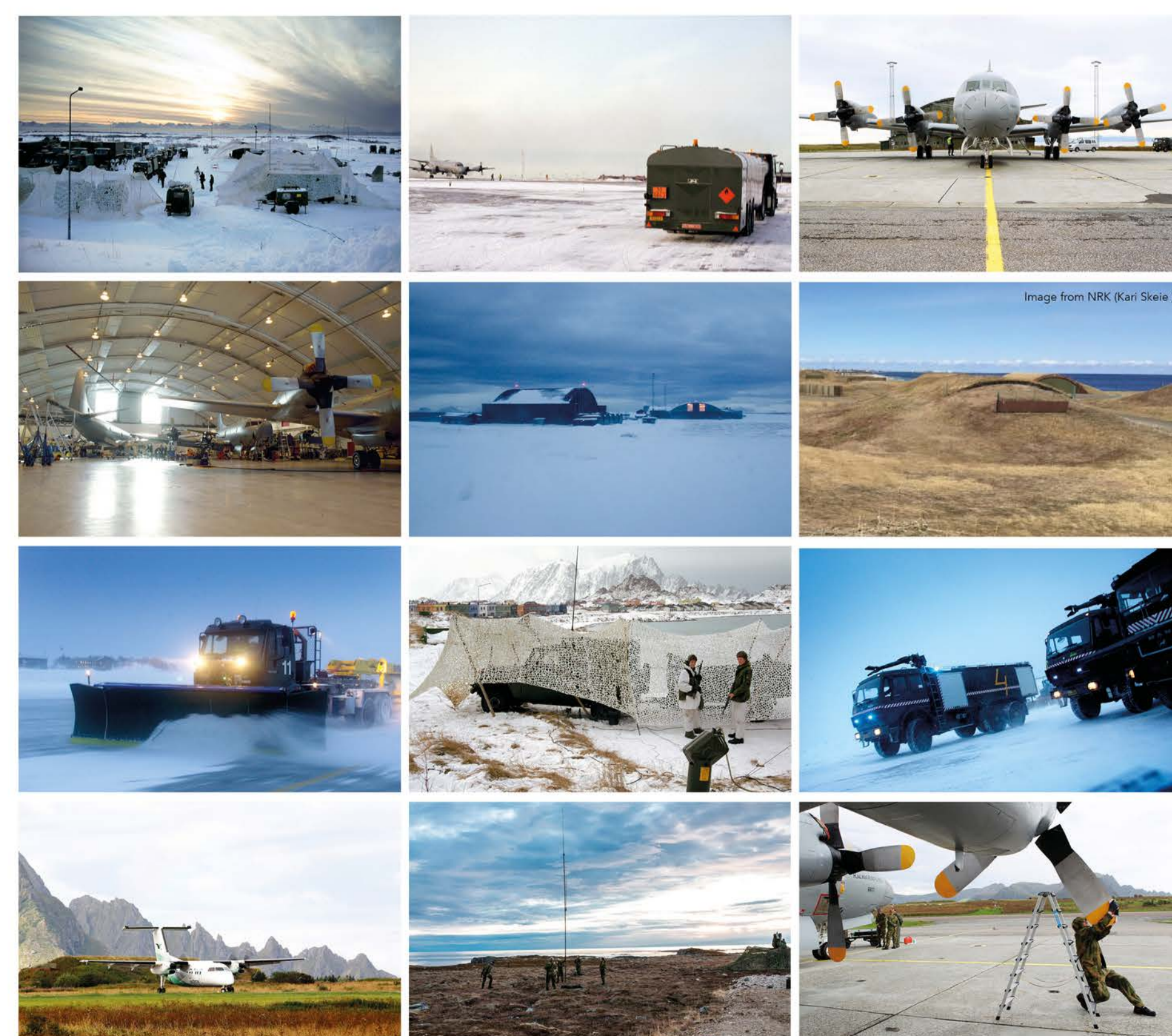
hydrologies

- lakes
- puddles
- streams
- drainage

settlements / Haugnes village



military / Andøya Air Station



manmade & natural / intertwined processes



images from site visit 08.11.2016

SOURCES
 Population statistics / Statistics Norway (sdb.no)
 Mapping base / GIS information for Andøya from Kartverket (geonorge.no)
 Ny langtidsgledeplan for forsvarssektoren: "Kampkraft og bærekraft" / Forsvaret (Regjeringen.no)
 Historical pictures / Digitalt Museum (digitaltmuseum.no), Vesterliden Info (vesterliden.info) and images shared on social media by Jan M. Øygård (private collection)
 Military pictures / Forsvarets media archive / by Torbjørn Kjøsvold, Jonas Christie, Kim H. Bjørheim, Per Thrana

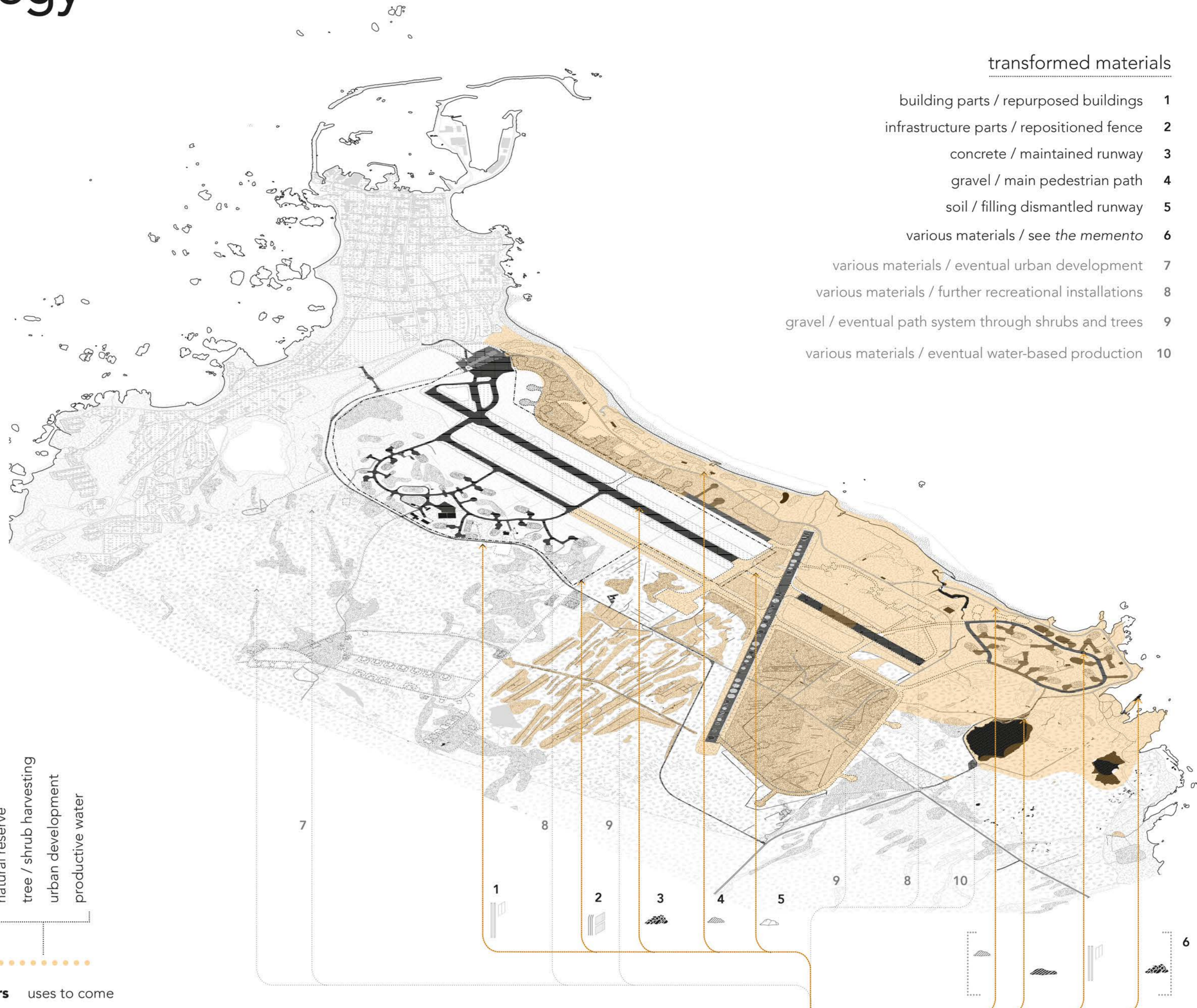
site strategy

transformation & new uses



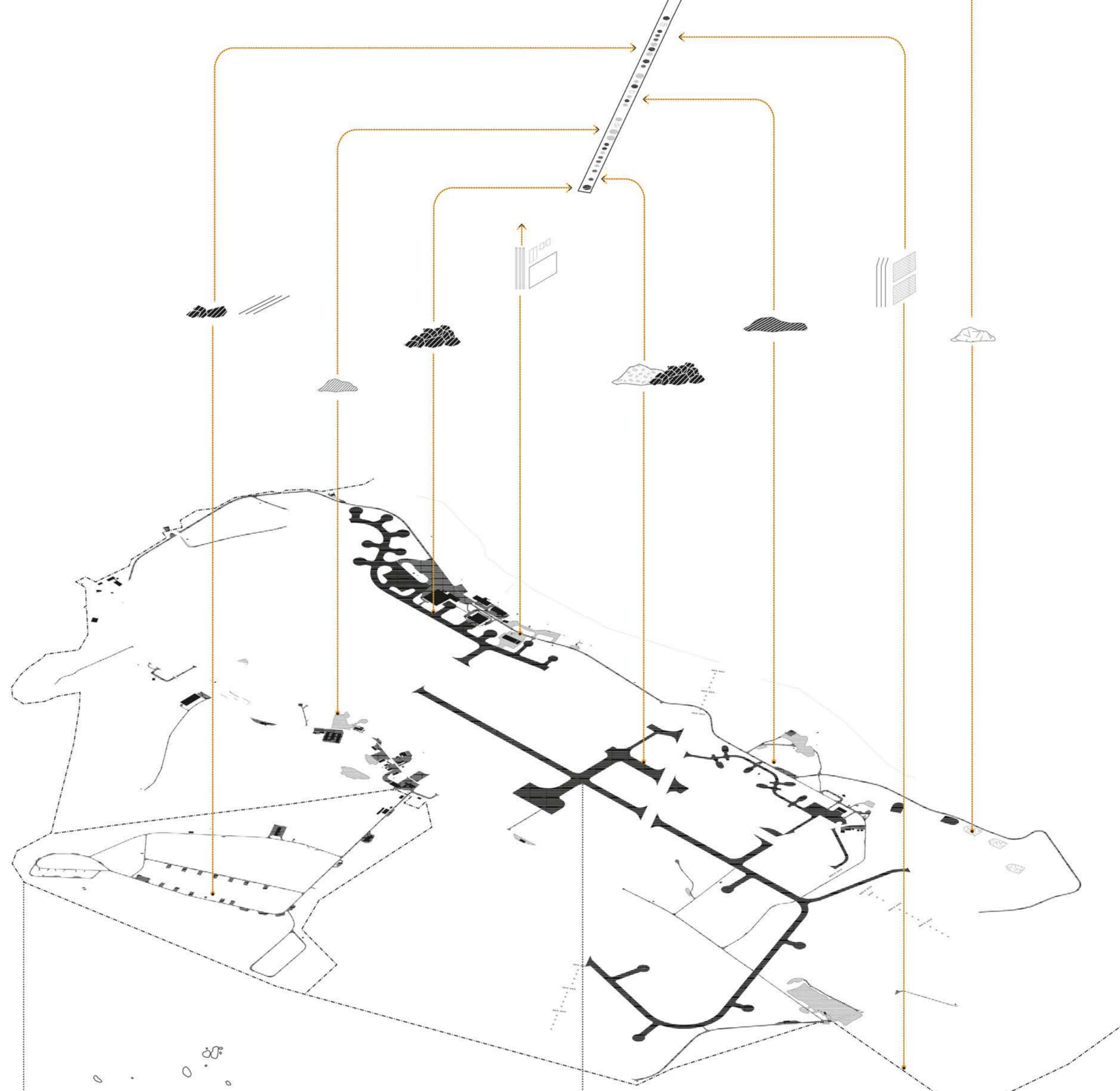
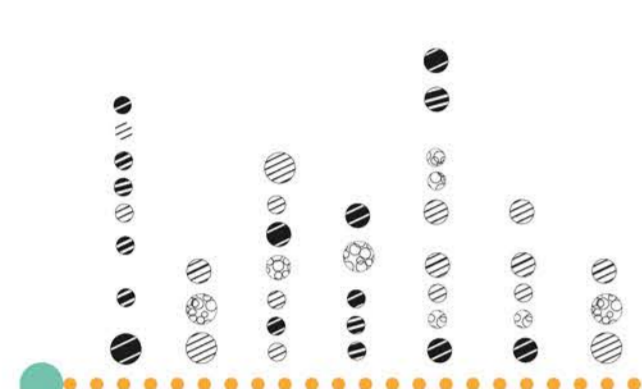
transformed materials

- building parts / repurposed buildings 1
- infrastructure parts / repositioned fence 2
- concrete / maintained runway 3
- gravel / main pedestrian path 4
- soil / filling dismantled runway 5
- various materials / see the memento 6
- various materials / eventual urban development 7
- various materials / further recreational installations 8
- gravel / eventual path system through shrubs and trees 9
- various materials / eventual water-based production 10



the repository

varying composition

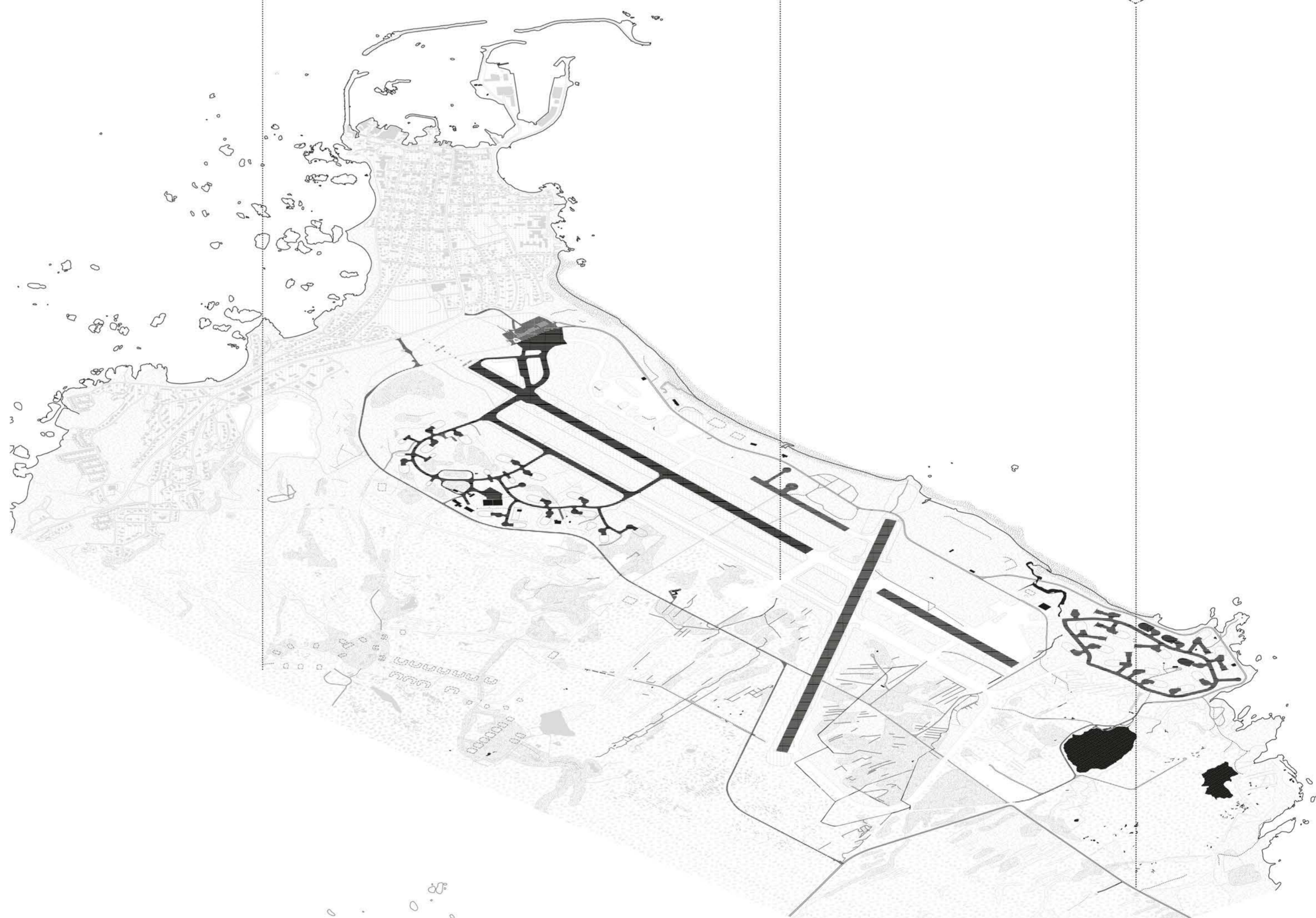


dismantled materials

- gravel
- asphalt
- concrete
- building parts
- infrastructure parts
- soil / vegetation

untouched materials

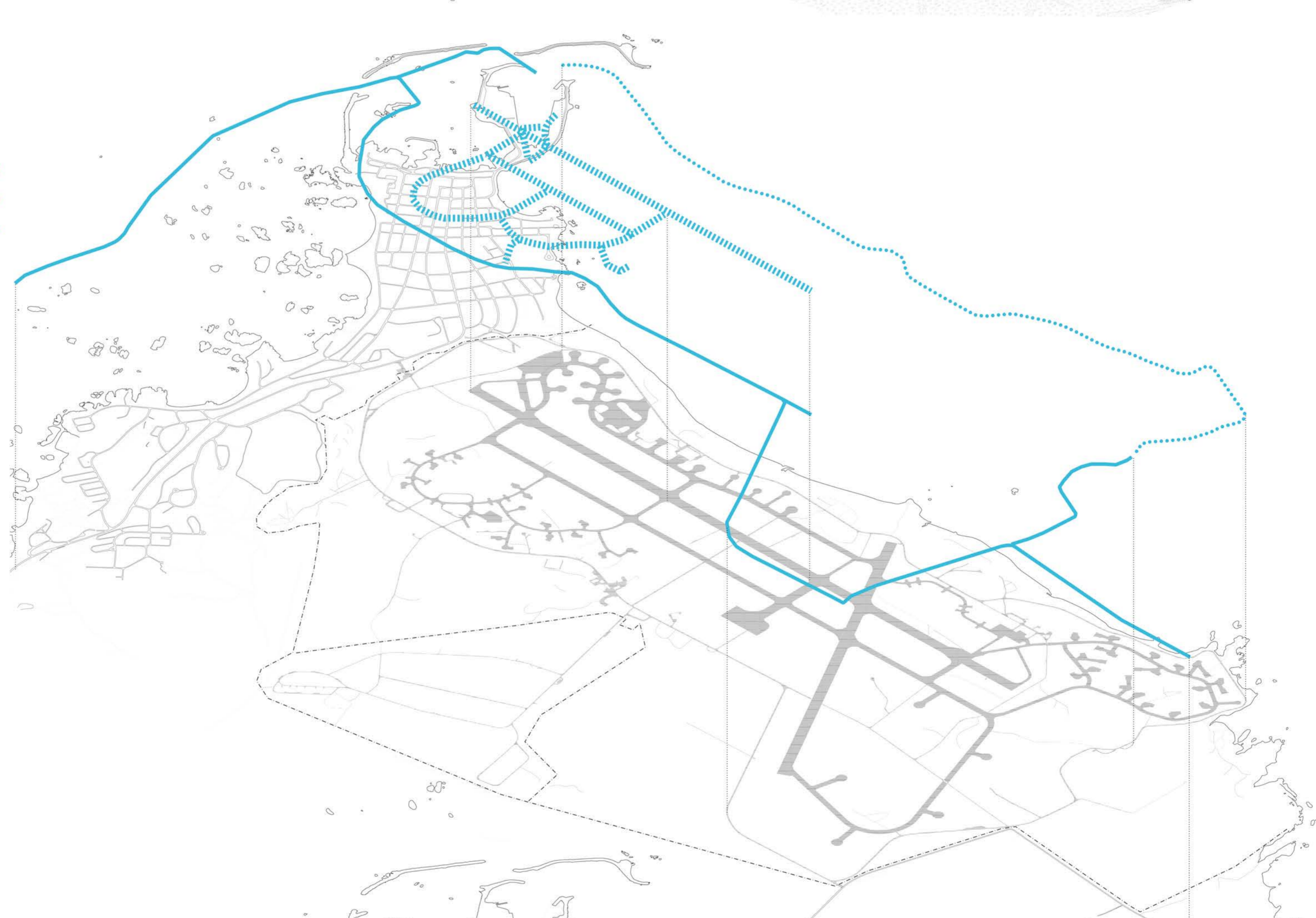
- buildings
- plane hangars
- runways and taxiways
- asphalt roads
- gravel trails and areas
- informal trails
- peat
- tall grasses
- shrubs and trees
- controlled lawn
- sand



proposed circulation

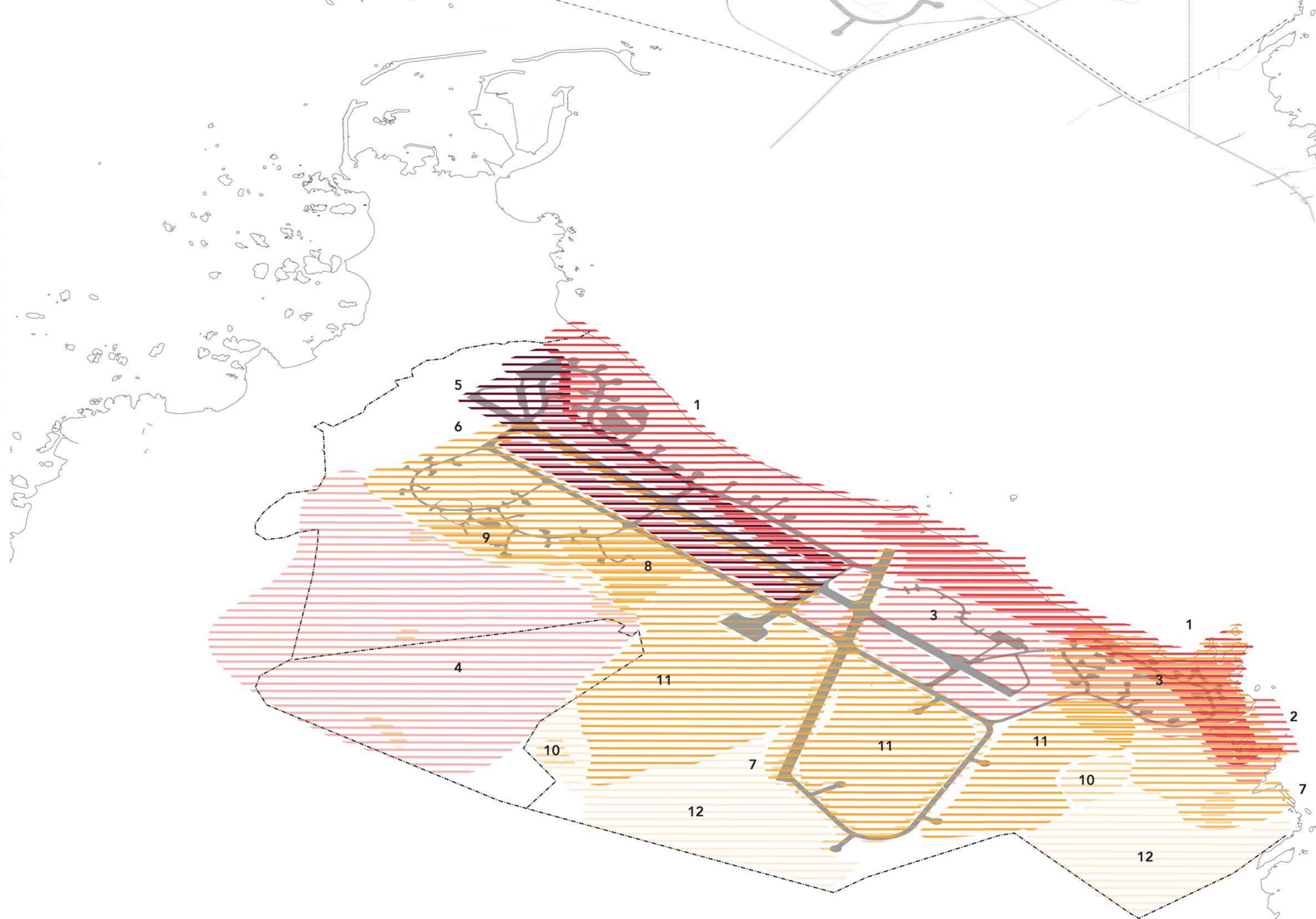
repurposed infrastructures

- plane / drone circulation
- main vehicular circulation
- main pedestrian / cycling path



distribution of uses

- outdoor recreational activities
- natural harbor / access to sea
- farming / grazing
- urban development
- civilian aviation
- drone center / aviation school
- cultural heritage
- high security storage
- intelligence services
- productive water
- tree / shrub harvesting
- natural reserve



the repository

The secondary runway of the air station is transformed in a surface to collect and store the dismantled materials of the site until they are repurposed. This repository becomes the centerpiece of a material ecosystem where resources are recirculated, either on site or towards other destinations.

The composition of the repository varies through time as different parts of the site are progressively transformed. A portion of the strip is left exposed to allow for pedestrians and cyclists to thread along the repository. When following this trajectory, one is reminded of the deep material impact the military has had on the site, while also becoming aware of the variety of shapes and textures of these materials. The repository becomes a place where one can appreciate the resources of the site and become aware of the impermanent state of the landscape.

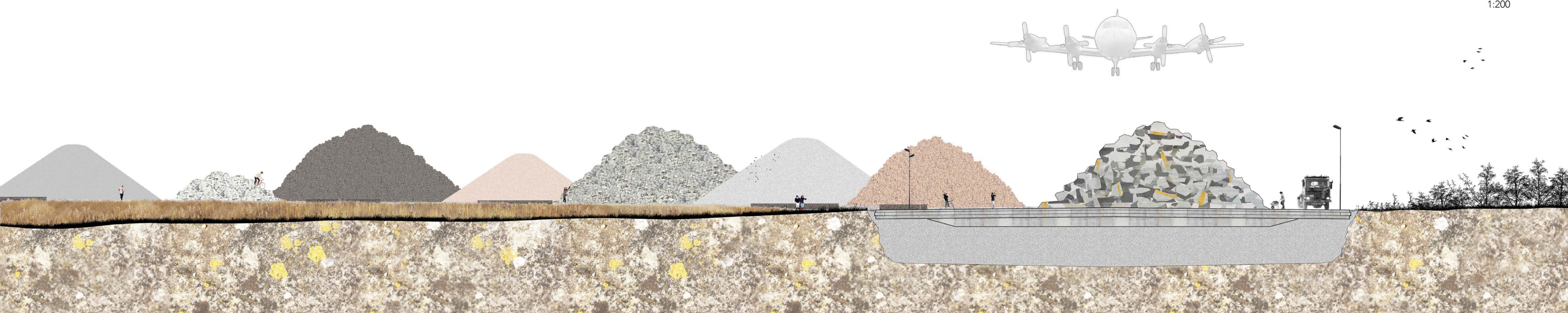


repository 30 years

- gravel paths / soft circulation
- asphalt road / access to repository
- weathered runway / repository
- gabion bench
- piles of material / materials in transit
 - gravel, asphalt, concrete blocks, sand, soil, bricks, building elements, etc



section A
1:200



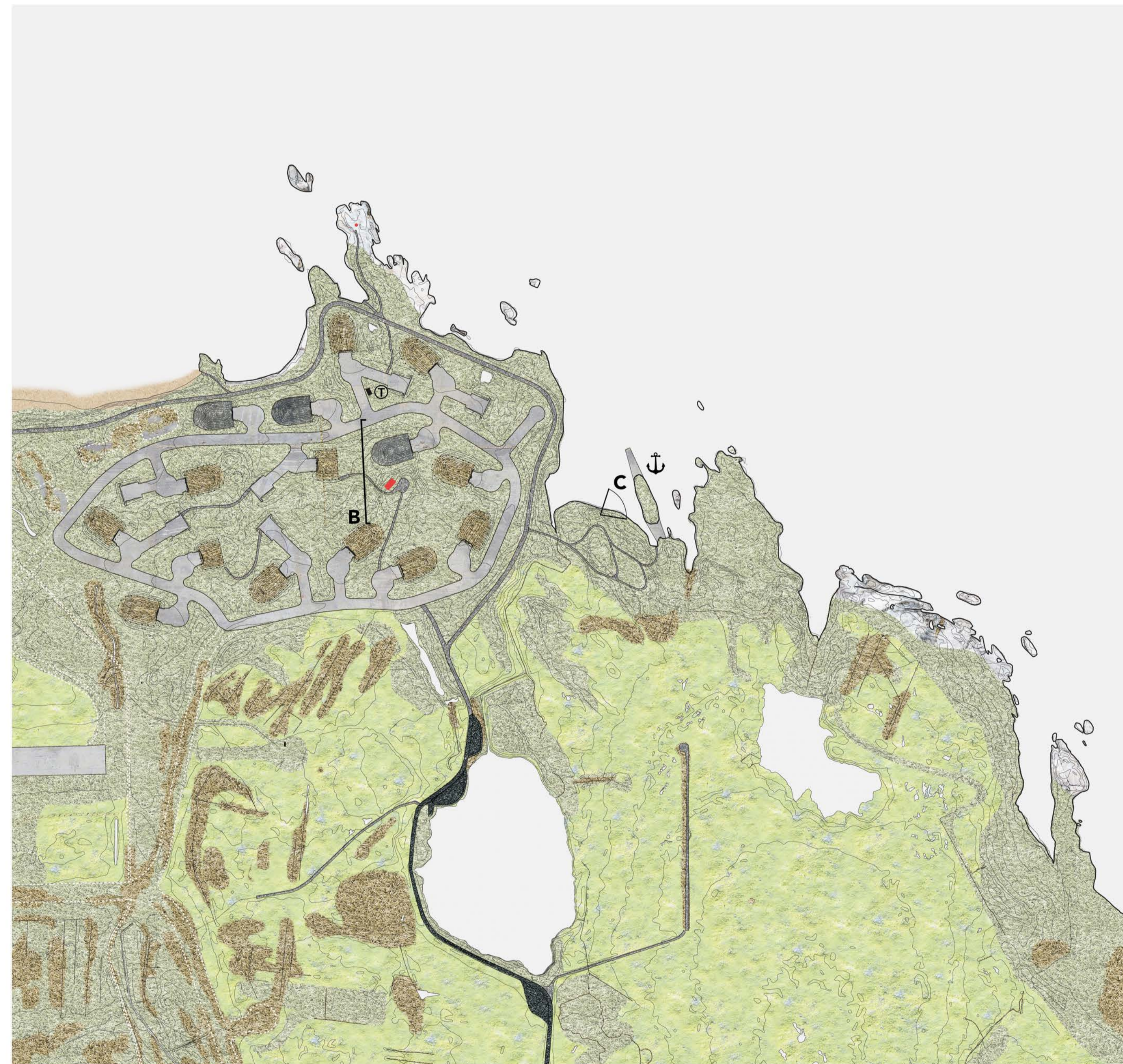
the memento

The space where once stood the village of Hauges is reopened to the public and becomes a touristic and recreational destination along the extended tourist road that now circles Andaya.

The cultural heritage related to the Cold War is experienced through the use of repurposed infrastructures. Some plane hangars are transformed in multi-use shelters, while others are stripped of their vegetation cover to become playful hills from where one can get a rare heightened point of view towards the surroundings. The former taxiways are left to weather and slowly become overgrown, while a former asphalt road is transformed in a pedestrian and cycling route.

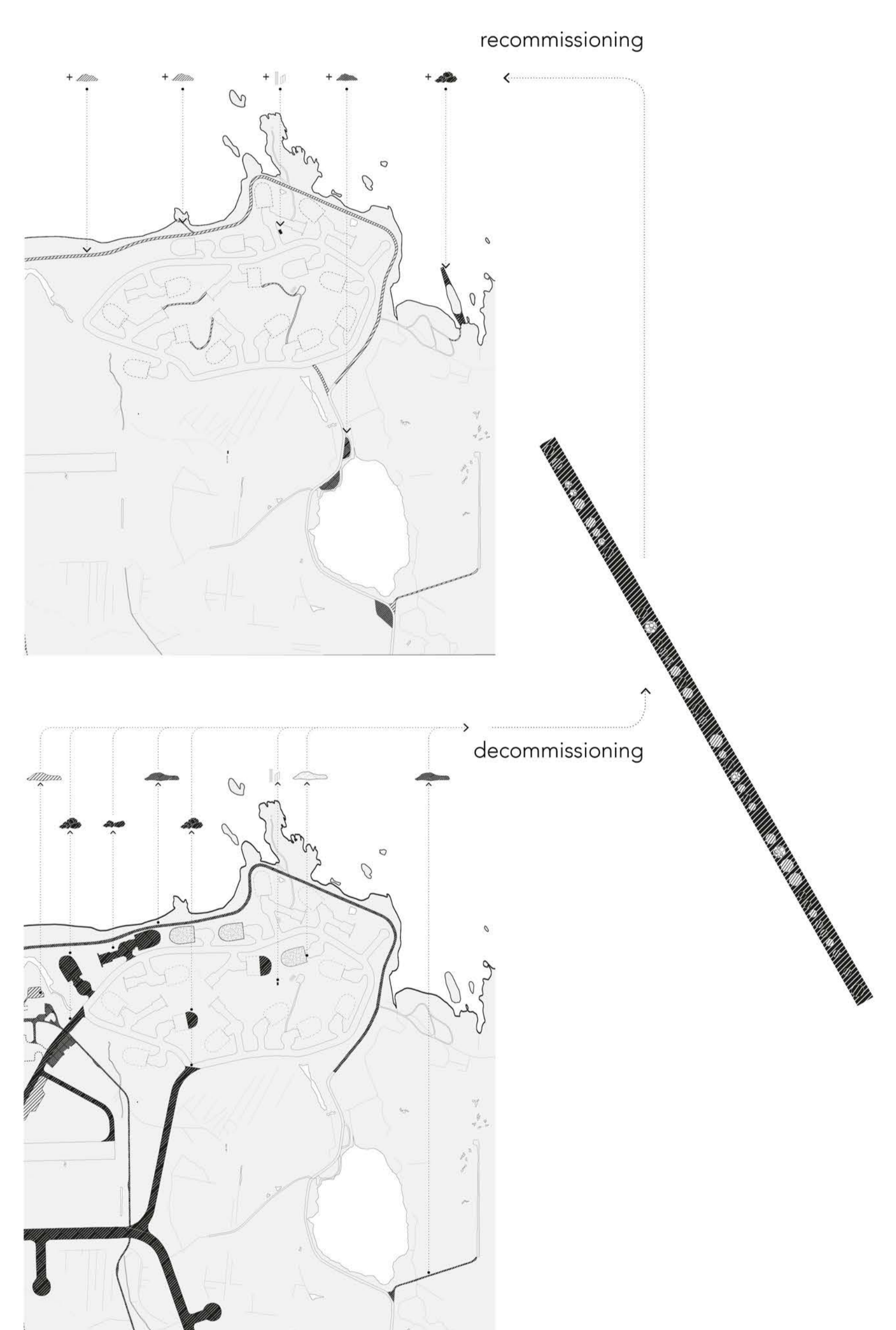
The cultural heritage related to Hauges is experienced through the reintroduction of historical uses of the landscape. For instance, occasional grazing is reintroduced to manage the growth of the tall grasses in certain areas, while the surfaces of plane hangars are left to be overgrown by shrubs and trees. Access to the water is also reestablished in the historical natural harbor through the construction of a pier made out of pieces of a dismantled runway.

In this site, locals, tourists and former Hauges residents become aware of the constructed nature of the landscape and the layered memories of the space.



memento 30 years

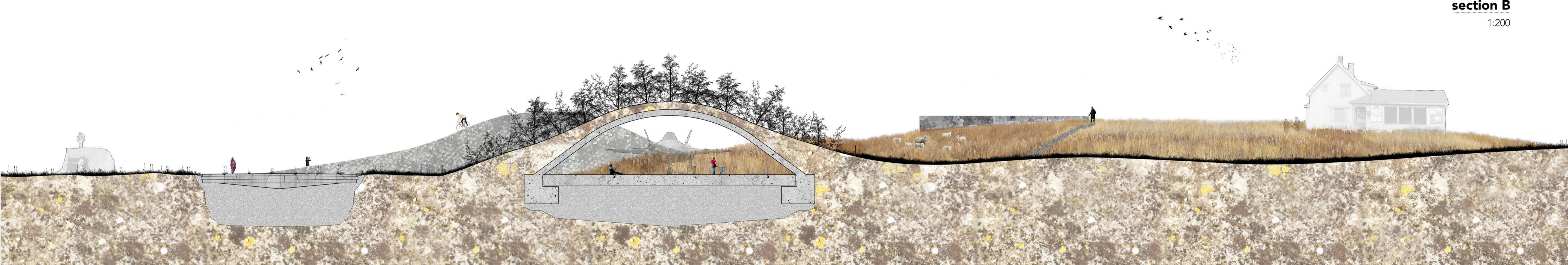
- sand dunes / recreational beach
- peat / grouse habitat
- grasses / occasional grazing
- shrub and trees / recreational wooden areas
- gravel paths / soft circulation
- asphalt road / tourist road and parking
- weathered taxiway / soft circulation
- pier / access to sea
- repurposed building / tourist information
- Hauges remains / cultural heritage
- open hangars / recreational use
- exposed hangars / walking surface



decommissioning / recommissioning

- gravel
- asphalt
- concrete
- building parts
- soil / vegetation

section B
1:200



view C

