

Studies

Program: A room for running in a world in flux

Mise en abyme



Organ theft



Corridor

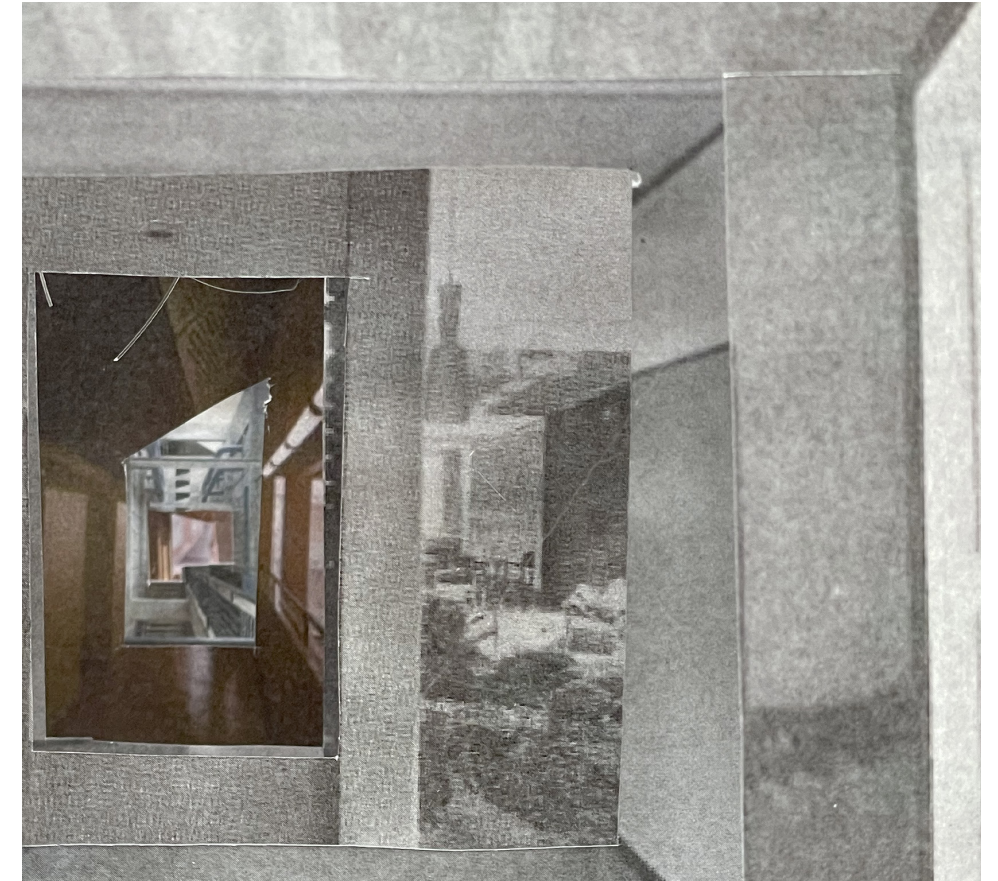


Preliminary studies

Main study

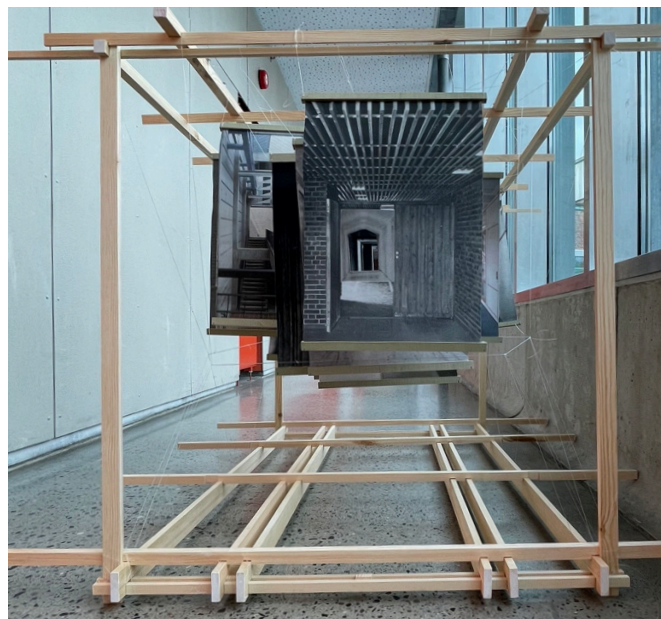
sub studies: Encounter 1
Encounter 2
Journey

Mise en abyme



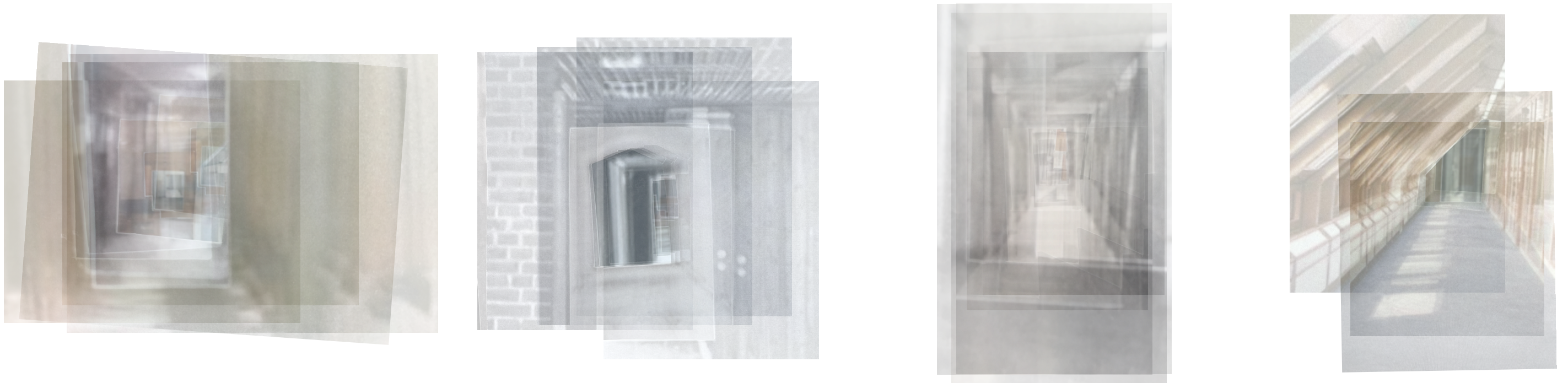
Can corridors appear in the absence of the mandatory flanking walls? By removing the vanishing point from the ten chosen Byggekunst-corridors (see essay, Story 1). The study explores the spectator's desire to read the structure as spatial, while knowing it is somewhat illusory – a picture within a picture.

Mise en abyme



Corridors on a scaffold in a corridor - a series of A3-sized photographs of corridors, published during 100 years of Byggekunst.

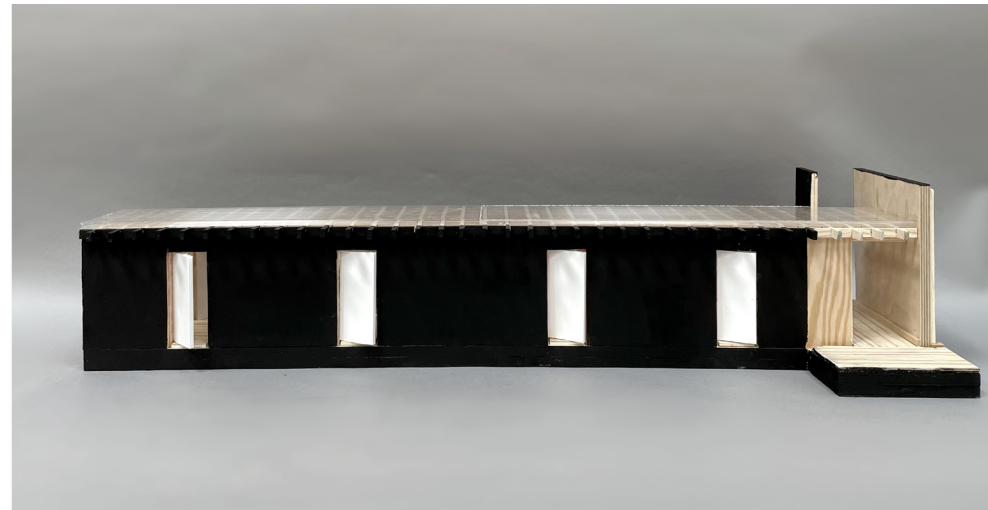
Mise en abyme



Recreating the encounters with *corridors on scaffold in corridor*:

Surveying, inspecting, staring at the over sixty photo-features of corridors during the history of Byggekunst/ Arkitektur N, by trying to reach into them, run through them, see what is hiding behind the corner.

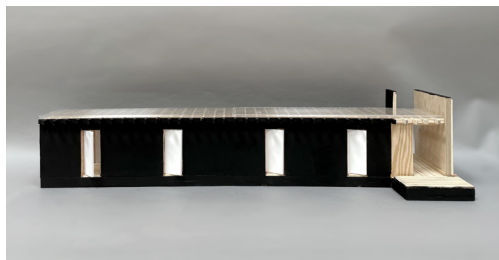
Organ theft



How does the architectural entity appear when it has been forcibly removed from its affiliated body?

All the surfaces where joints have been sliced off from the circulation are black as a cutting plane would be. The study explores two routes where the destinations are missing.

Organ theft



Hijacking a blood vessel – a narrow corridor with doors aligning on both sides of the central pathway. The study explores the corridor as a space pending between restriction and hug.

Organ theft



A **ripped-out** heart with according vein-stubs, adjoining crisscrossing pathways – vertically and horizontally, into a room of collisions – of pathways, flâneurs, and material auras.

Corridor

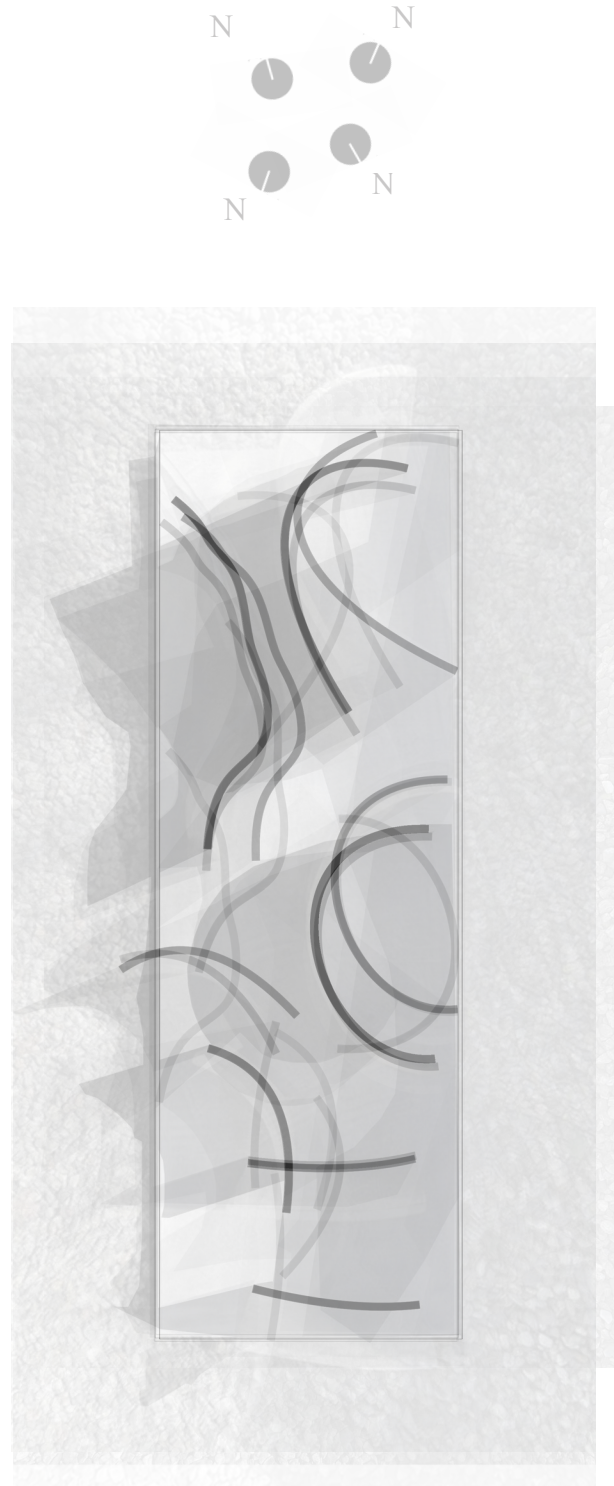


Sub-studies:

- Encounter 1 - arranging the internal room
- Encounter 2 - arranging the external room(s)
- Journey - in the shoes of the flâneur

Encounter 1

Corridor, Encounter 1



The first encounter takes place between the elements in the composition, considered to be corners and edges of other realms. Instead of adhering to the external rooms, the study explores what happens in the resulting space between the elements, when differently arranged.

Corridor, Encounter 1



Eye-level tests of wall configurations

Corridor, Encounter 1



Corridor, Encounter 1



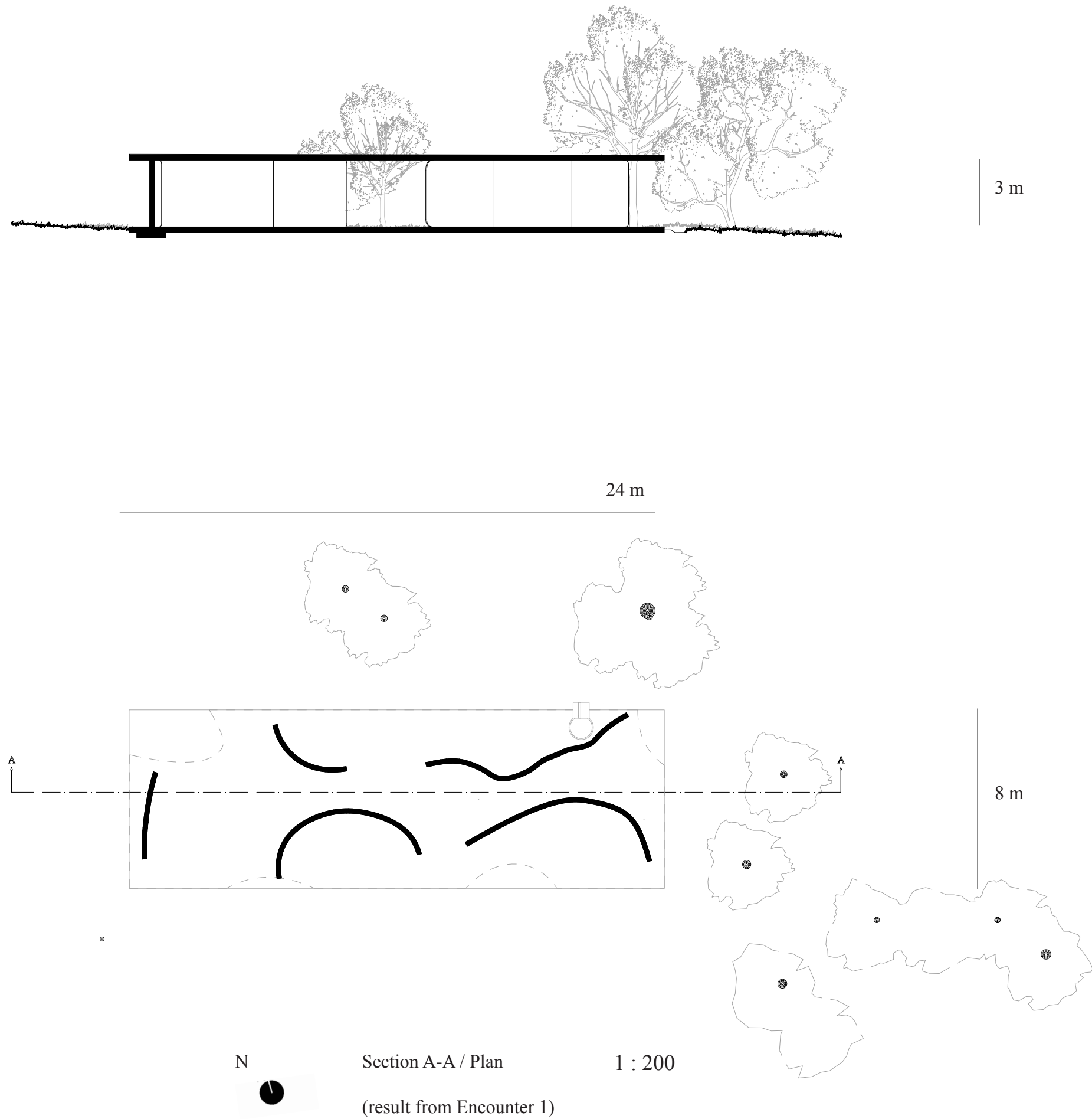
Corridor, Encounter 1

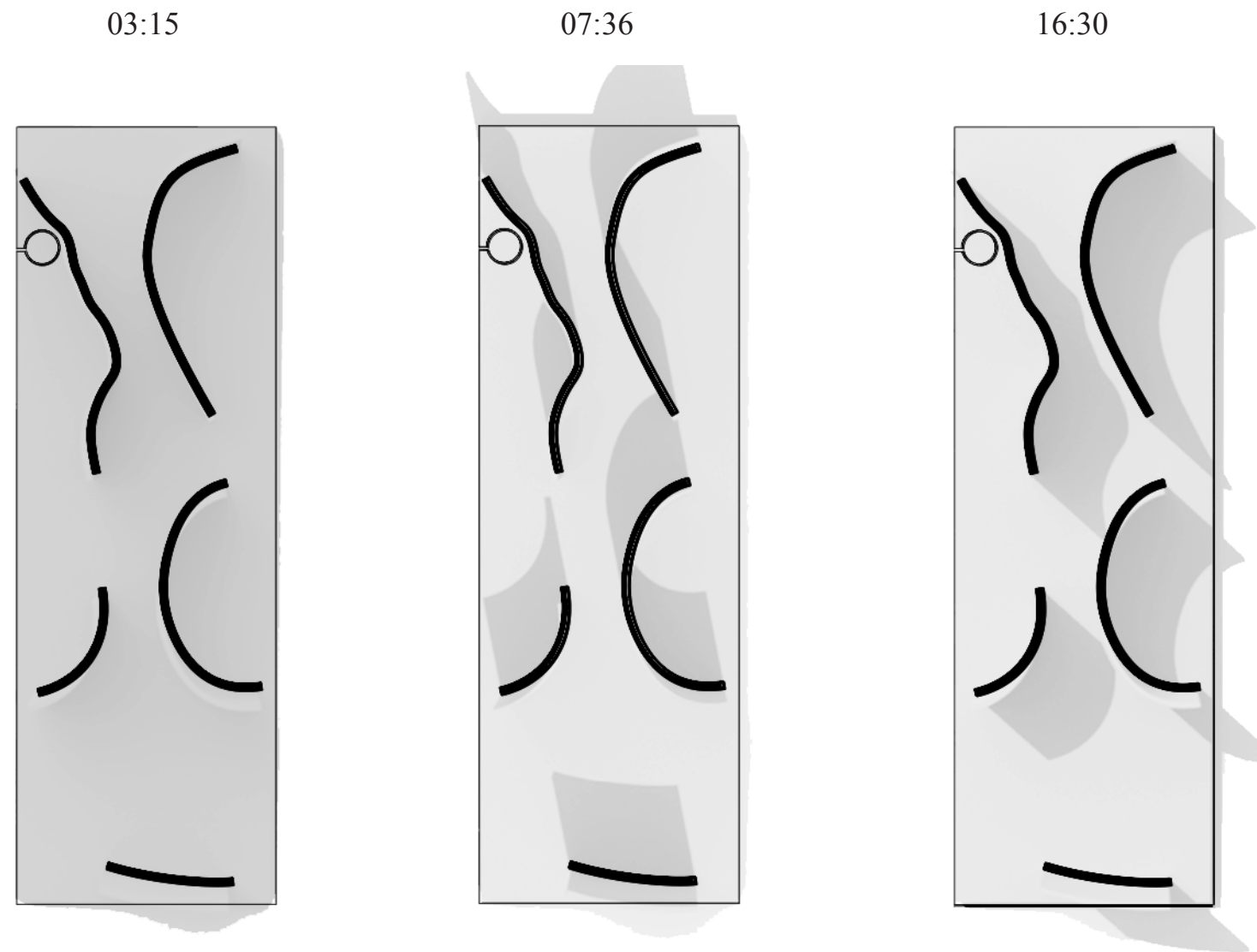


Corridor, Encounter 1



Corridor, Encounter 1





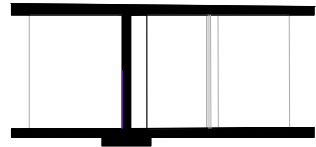
Provisionally removing the roof, having a look at how shadows brush against the wall shapes – hinting at the constant re-articulation of the structure as it appears during a day in late April

Encounter 2

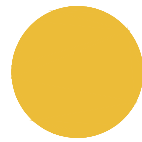
Corridor, Encounter 2

What happens to the architectural interior with increased densification of surroundings?
Documentation in ten photographs for each configuration.

Variables:



Set architectural interior, high gloss reflective concrete



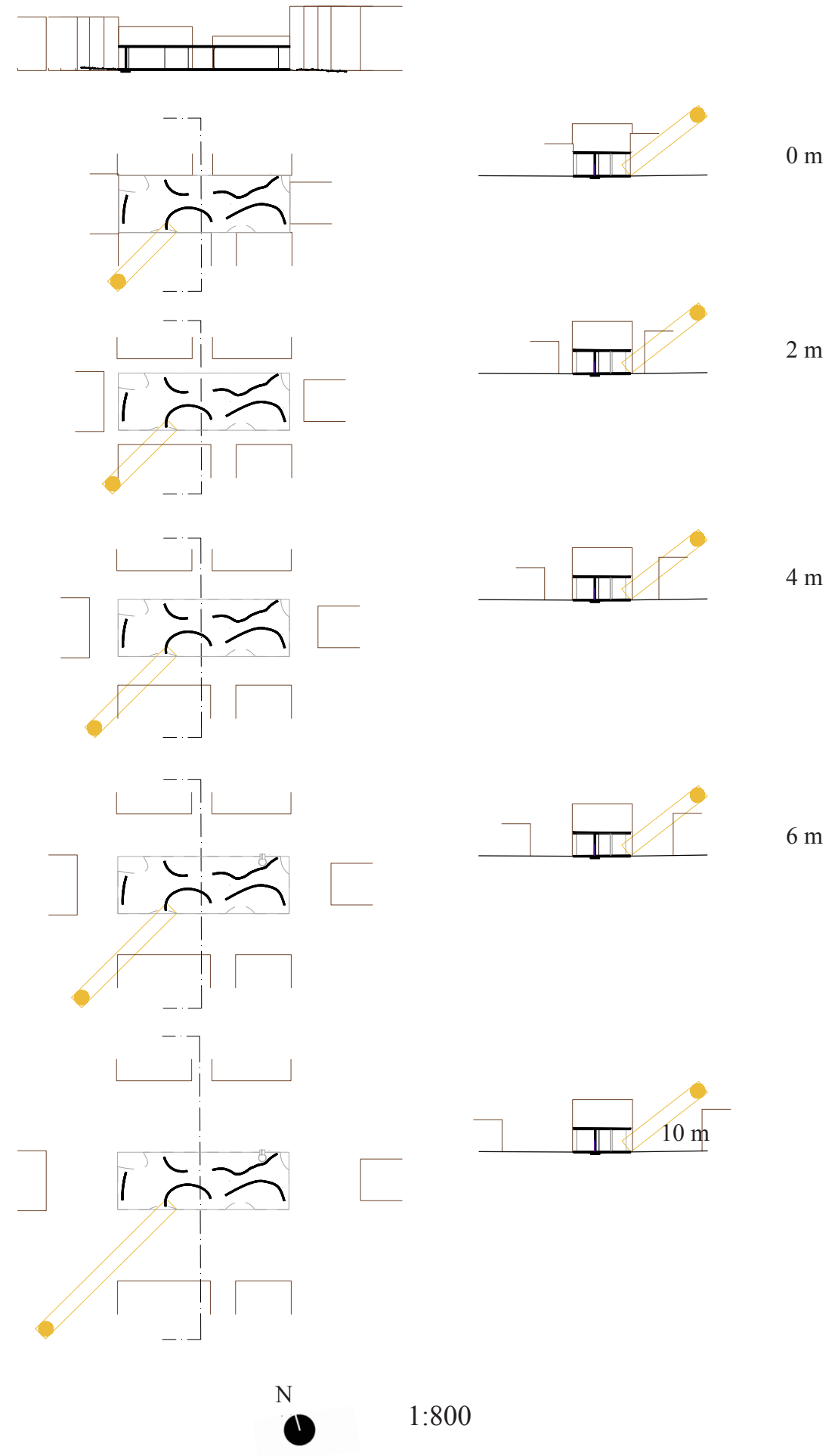
Sunlight, aprox 15:40, 02.05.2023, Oslo



Brown surrounding buildings



Green



Corridor, Encounter 2

a, b



c, d, e, f

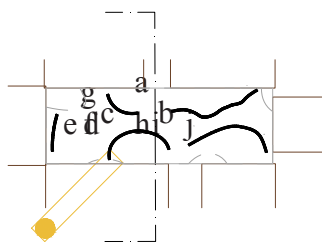


g, h, i, j



Encounter 2.1, a-j,
0 m distance between architectural entity and surrounding brown boxes.

Early May afternoon



1:800



Corridor, Encounter 2

a, b, c



d, e, f

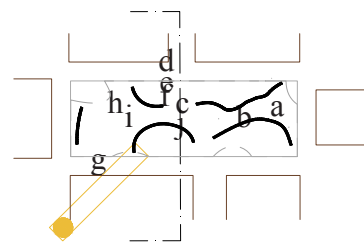


g, h, i, j



Encounter 2.2, a-j,
2 m distance between architectural entity and surrounding brown boxes.

Early May afternoon



1:800



Corridor, Encounter 2

a, b, c



d, e, f, g

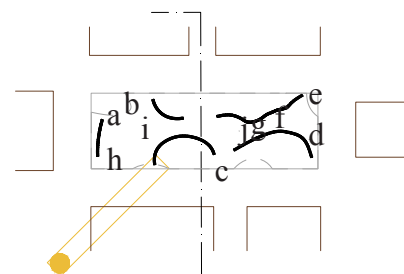


h, i, j



Encounter 2.3, a-j,
4 m distance between architectural entity and surrounding brown boxes.

Early May afternoon



1:800



Corridor, Encounter 2

a, b



c, d, e, f

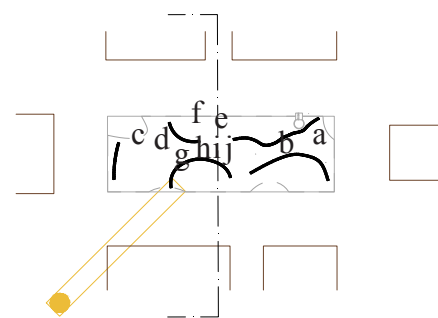


g, h, i, j



Encounter 2.4, a-j,
6 m distance between architectural entity and surrounding brown buildings.

Early May afternoon

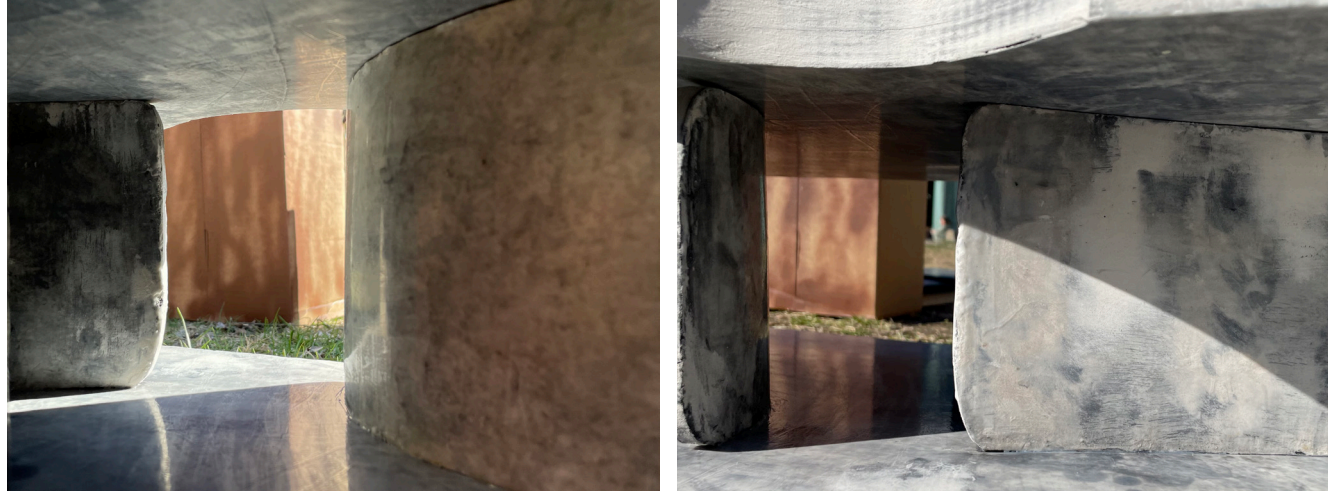


1:800



Corridor, Encounter 2

a, b



c, d, e, f

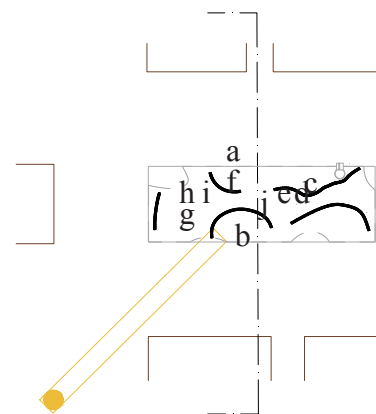


g, h, i, j



Encounter 2.5, a-j,
10 m distance between architectural entity and surrounding brown buildings.

Early May afternoon



1:800





Corridor, Encounter 2

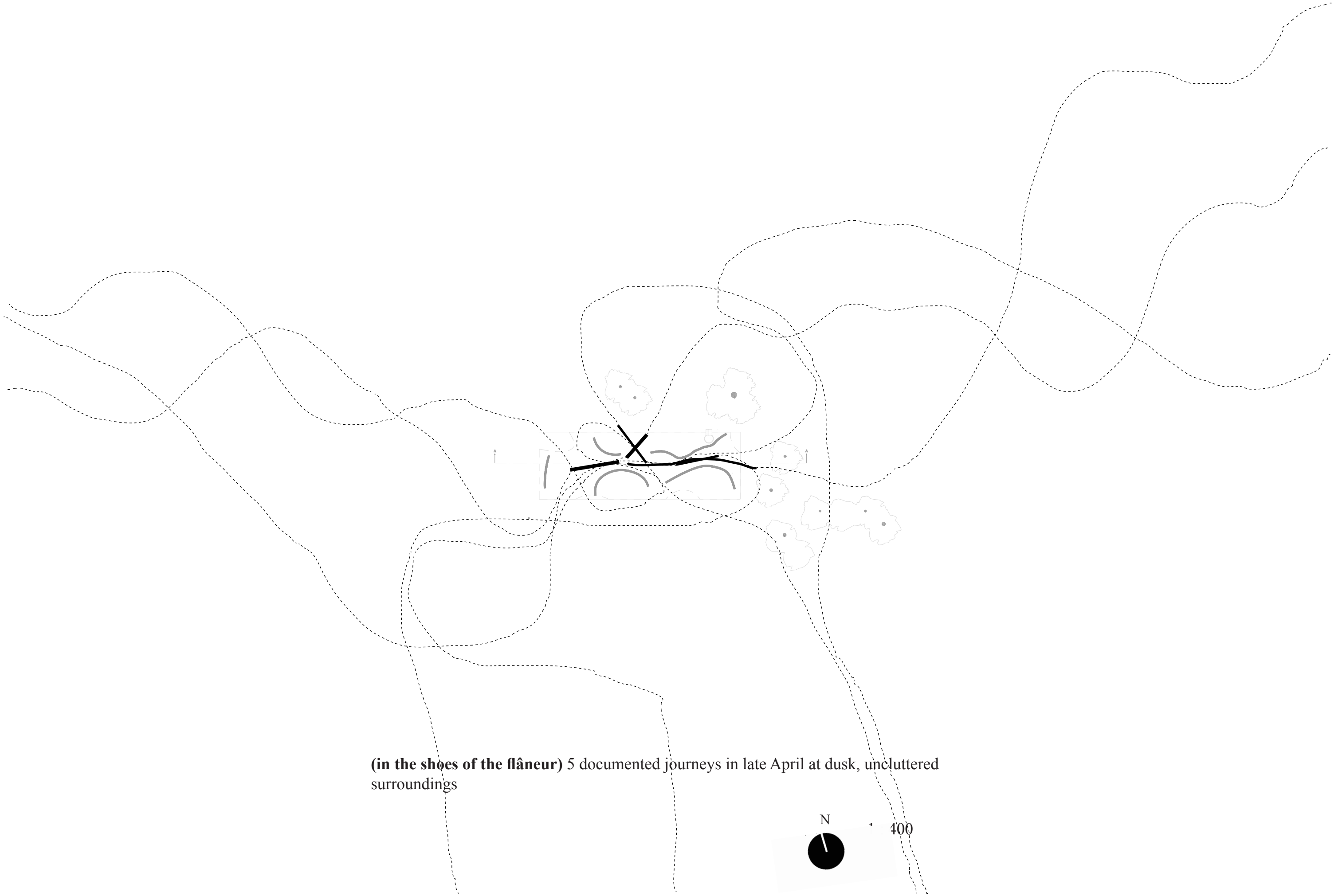


Corridor, Encounter 2

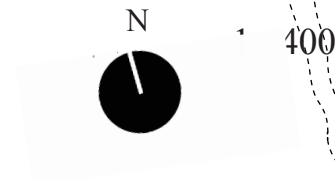


Journey

Corridor, Journey



(in the shoes of the flâneur) 5 documented journeys in late April at dusk, uncluttered surroundings



Corridor, Journey



a



b



c



Journey 1, a-c 1:400
late April, at dusk



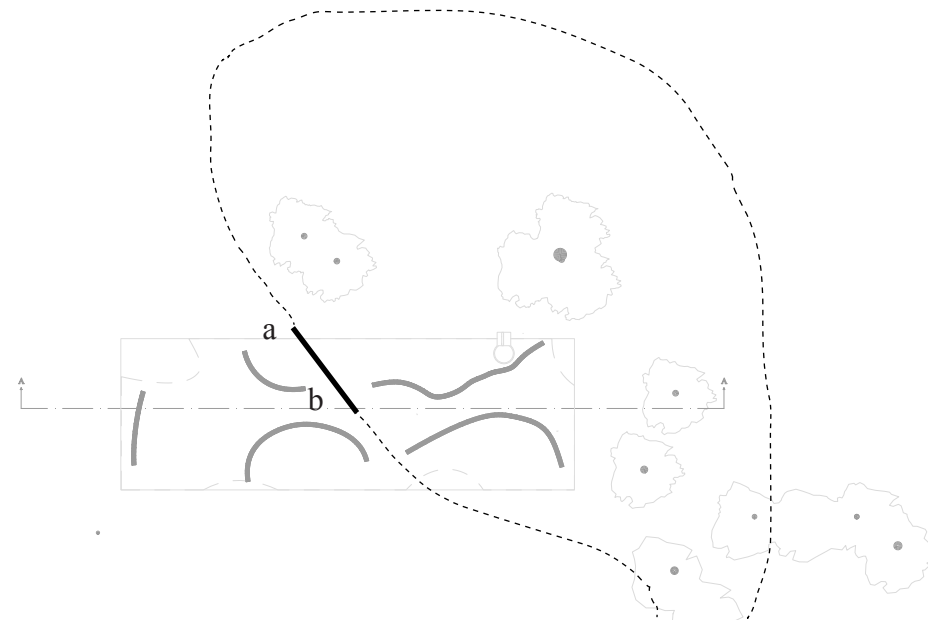
Corridor, Journey



a



b



N



Journey 2, a-b 1:400
late April, at dusk

Corridor, Journey



a



b



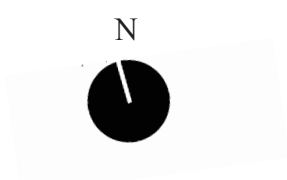
c



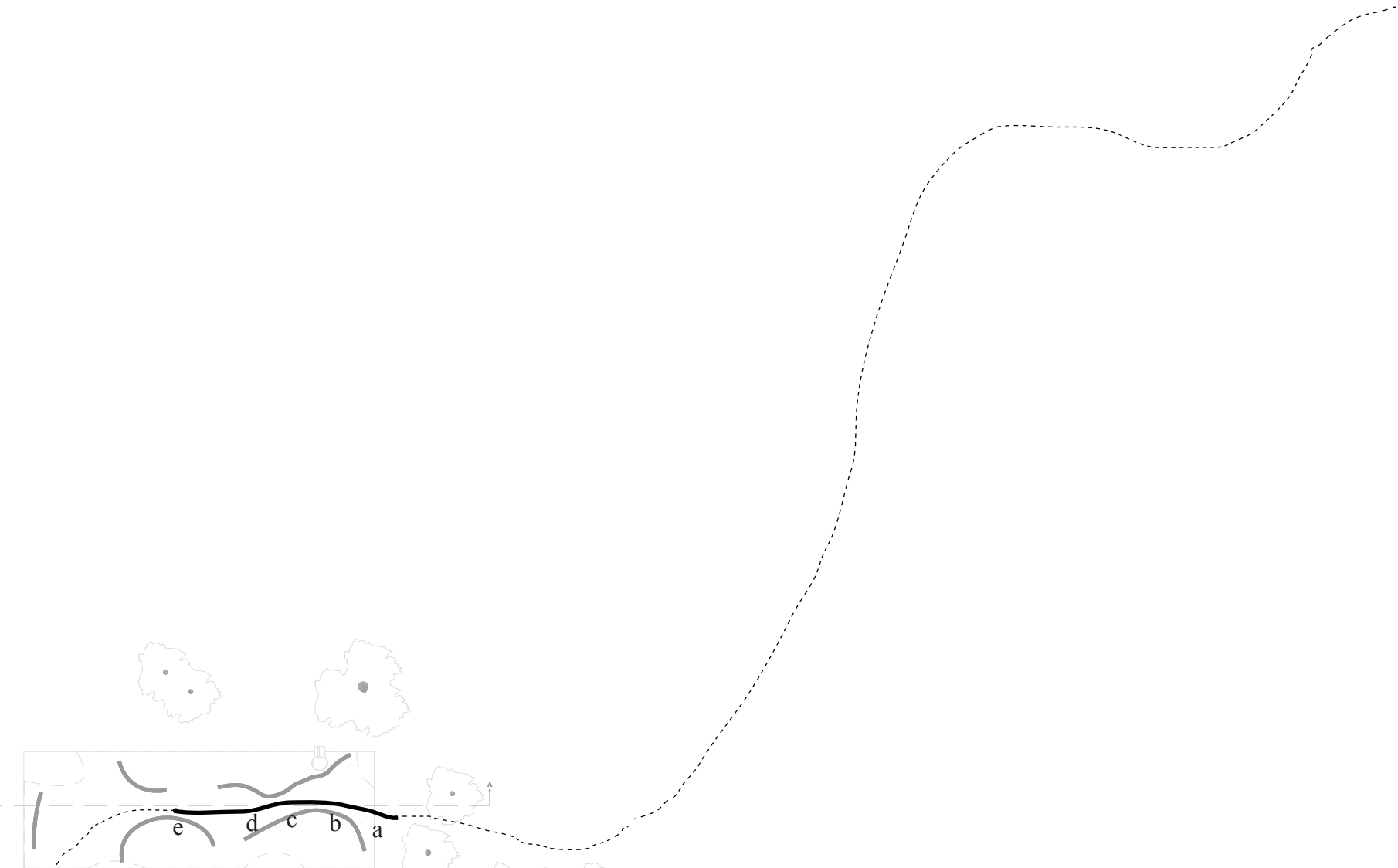
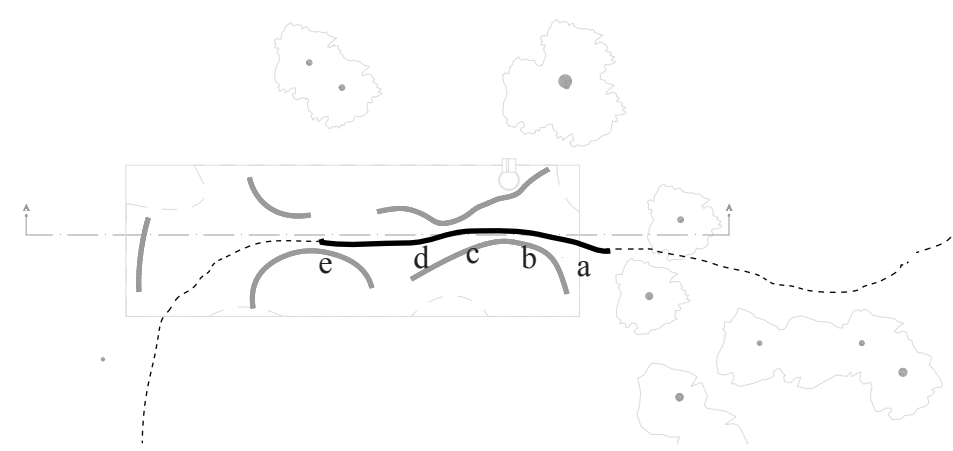
d



e



Journey 1, a-e 1:400
late April, at dusk



Corridor, Journey



a



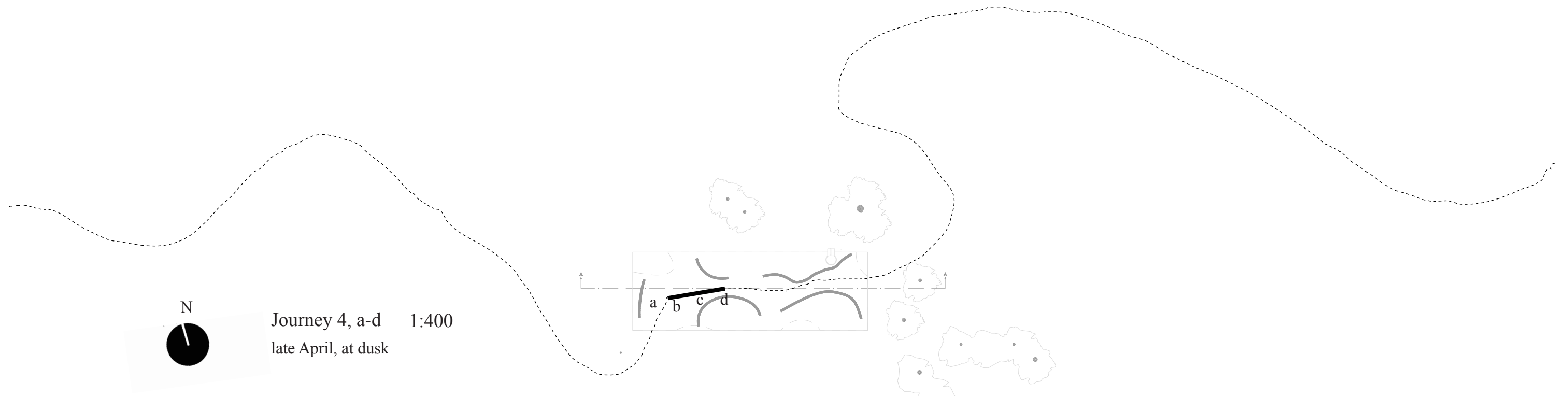
b



c



d



Corridor, Journey



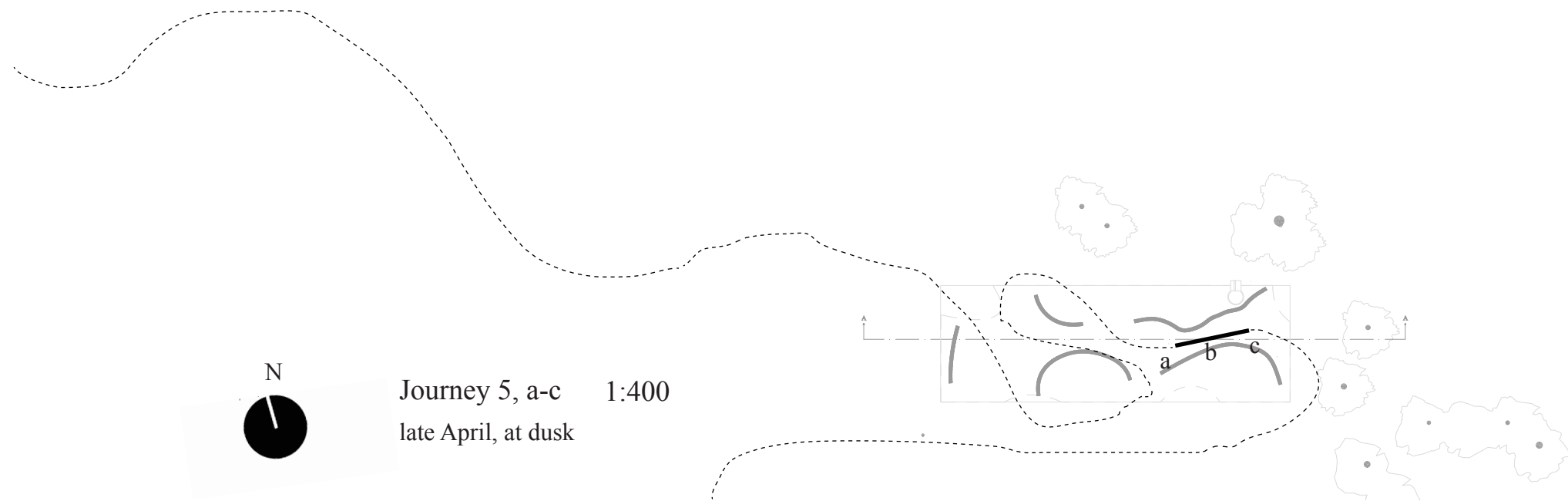
a



b



c









Corridor, the process-object

is an ambiguous architectural gesture,

slicing up the space only to stitch it back together?

A room for running in a world in flux is a wish – not for increased hurry, but perhaps to clarify what one is running towards. There is also room in case of a happy collision, or the unexpected detour. The interior-exterior, dark-reflective, stable-wavering container is constantly re-formulated by its context and content – but, amid the running – hopefully, some moments will crystallize.



Architecture extends