

1

THE FLOODABLE GARDEN :
From natural Disaster to ecological Hope

The process

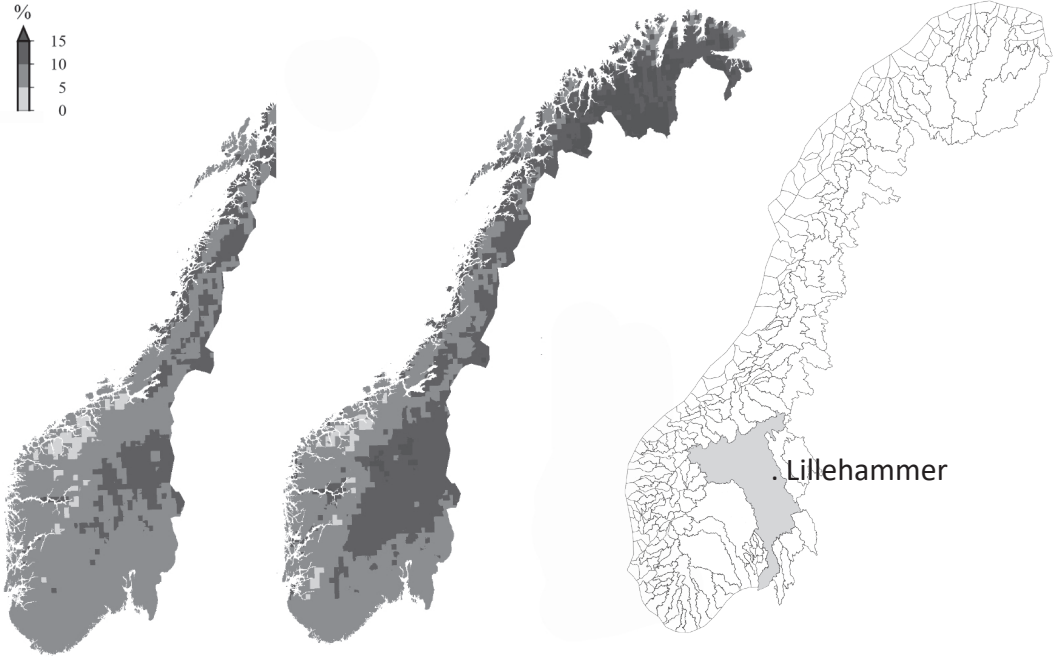


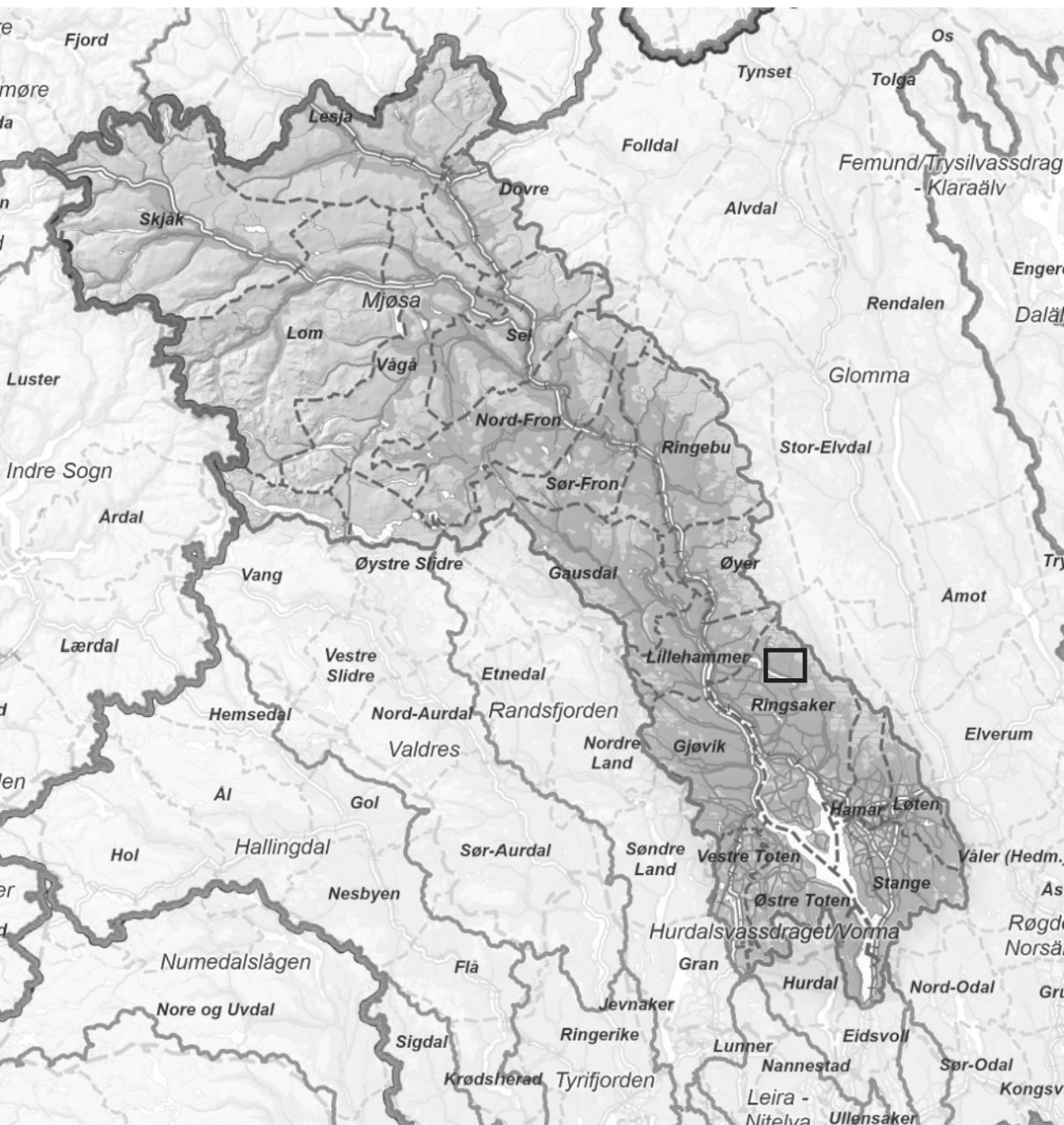
GENERAL CONTEXT

Forecasts:
change in precipitation in Norway

Median percentage change in
annual precipitation between the
reference period (1971-2000) and
the projection periods 2031-2060

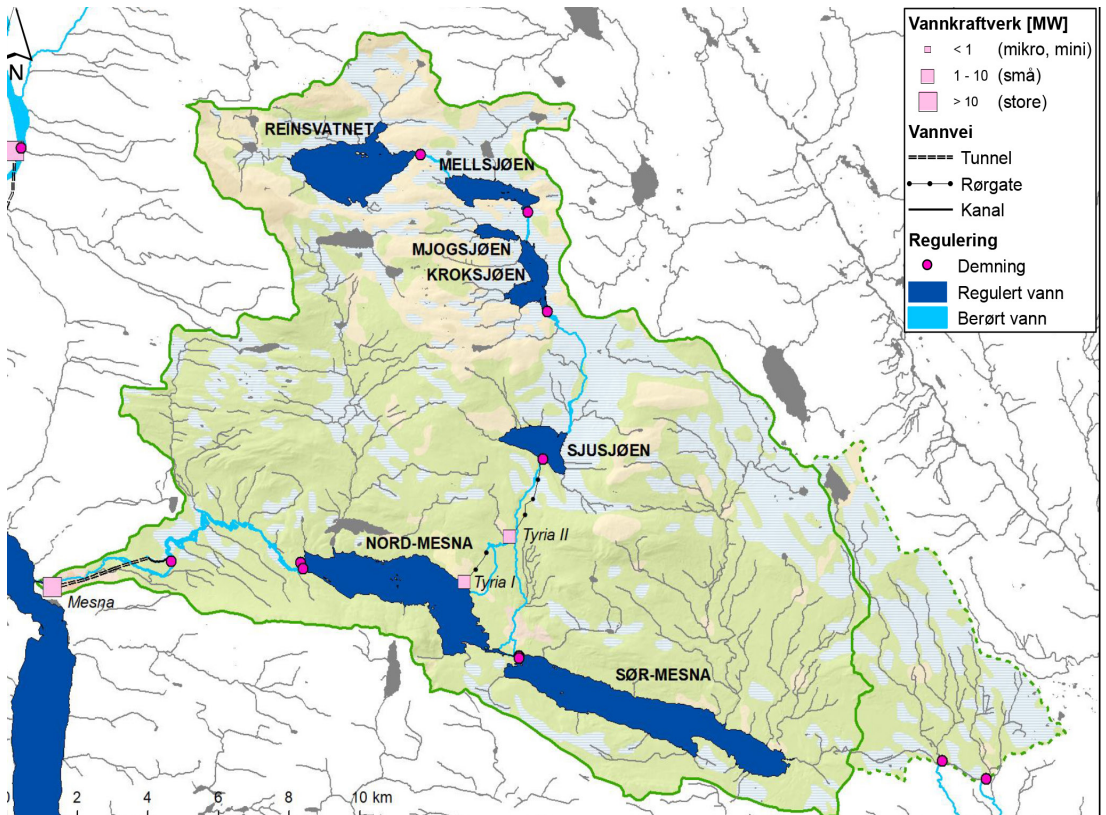
Median percentage change in
annual precipitation between the
reference period (1971-2000) and
the projection periods 2071-2100



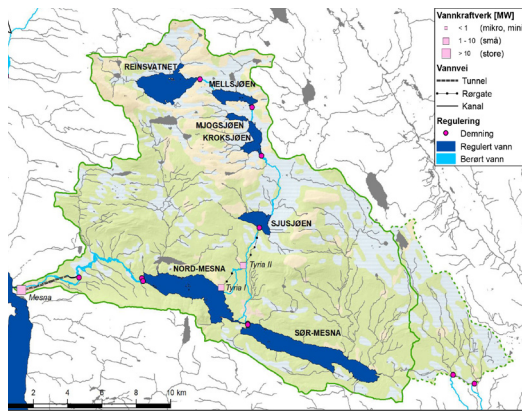


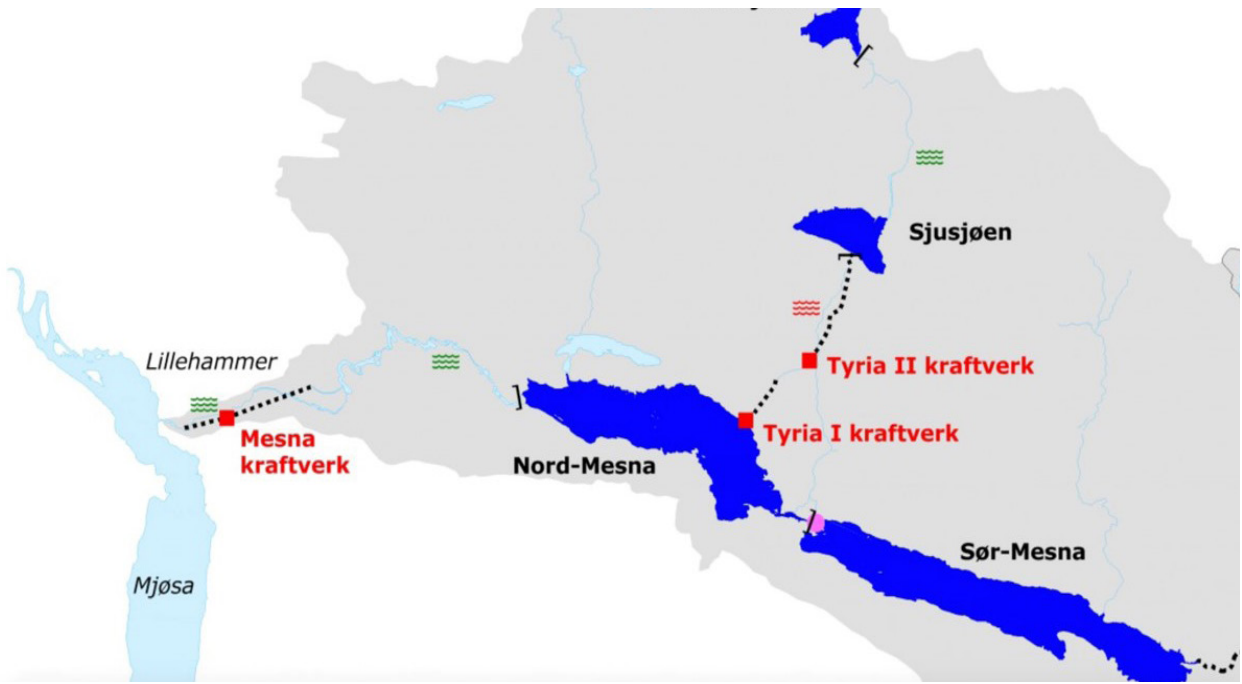
Mjøsa lake watershed

Since Mesna river is a part of a big watershed of Mjøsa lake, part of a Lillehammer city is affected by 2 directions flows and 2 possible floods.

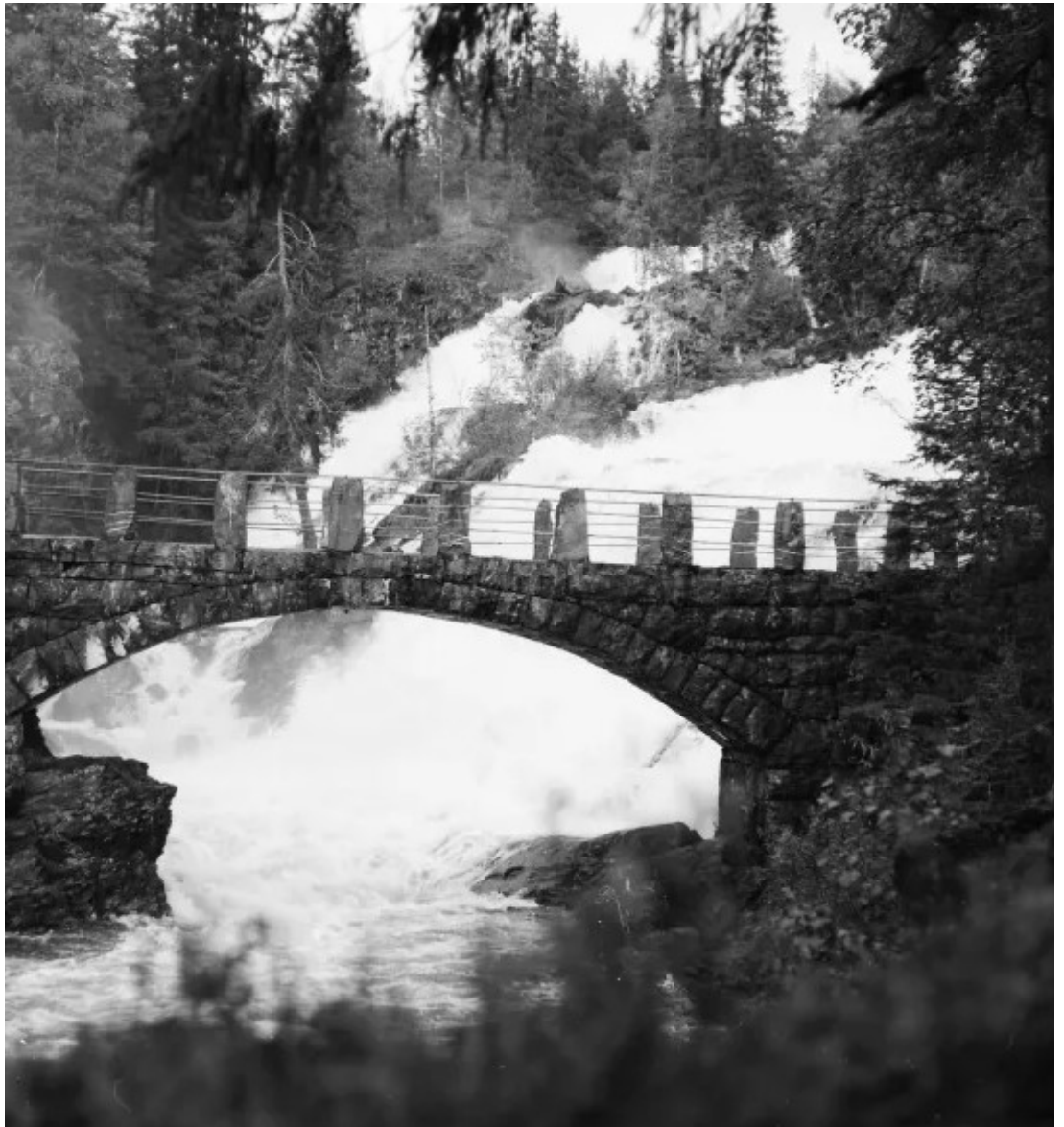


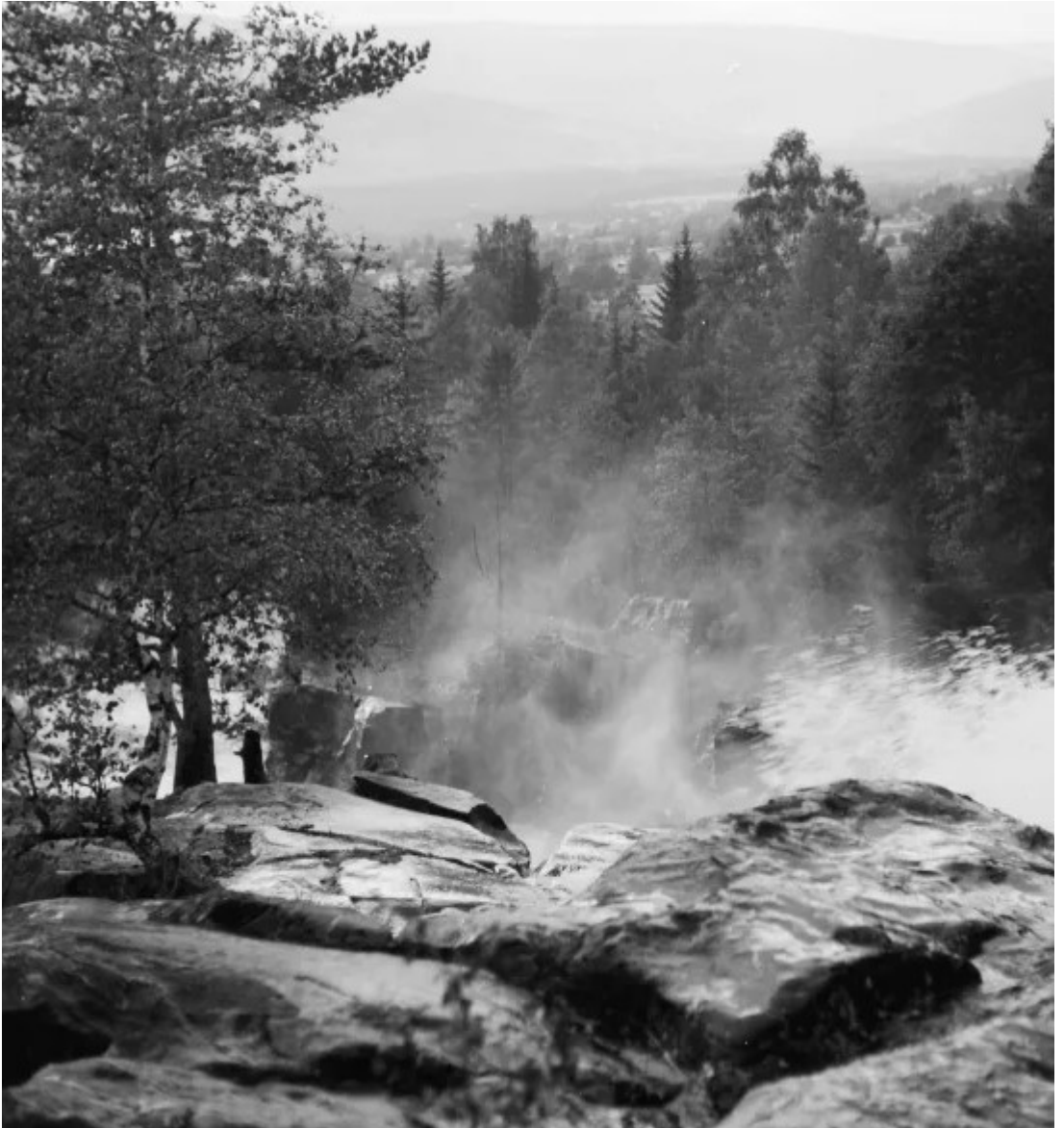
The Mesna river watershed











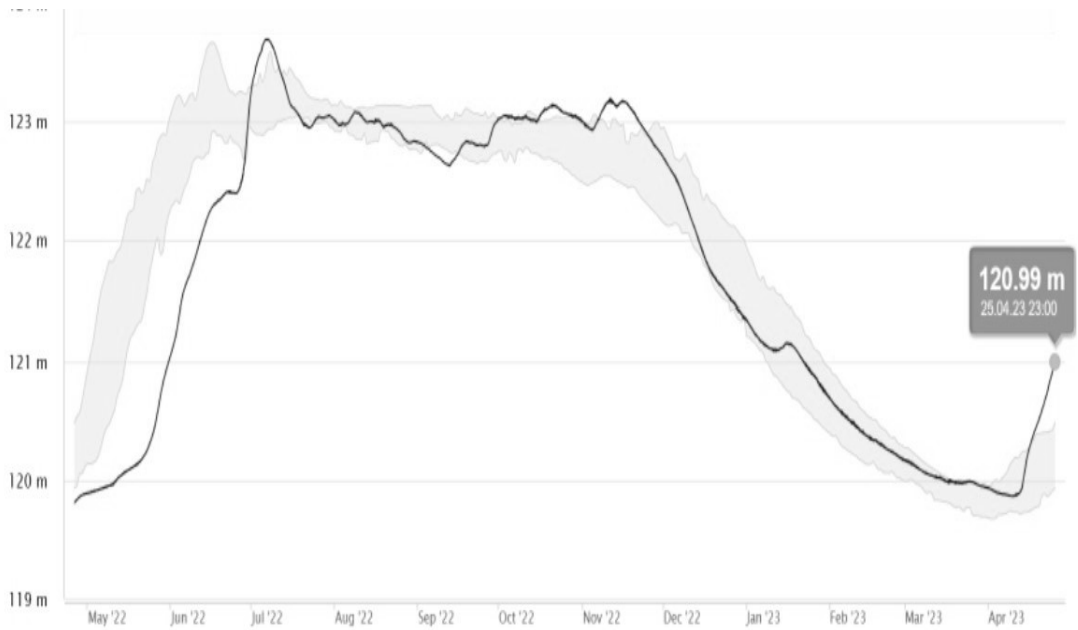
Mesna flood in 1957; Photo: Bj. Møl-





Mesna flood in 1957; Photo: Bj. Møl-

FLOOD "HANS" IN 2023



Storm hans in South Norway; Photo: Stain Lisberg Solum



Mjøsa lake water level rise dynamics

Vannet truer senteret: Tømmer butikker og permitterer ansatte

I 1995 kunne man ro inne i kjøpesenteret ved E6-avkjøringen i Lillehammer. Nå er det nyoppussete kjøpesenteret stengt av en ny flom.



Kristina Hågensen
Journalist

Astrid Gerdtz
Journalist

Andrine Sverdrup Wennemo
Journalist

Ola Bjerlo Strande
Journalist

Lars Erik Skreftsrud
Fotograf

Reidar Gregersen
Fotograf

Vi rapporterer fra Lillehammer

Publisert 11. aug. kl. 17:14
Oppdatert 11. aug. kl. 17:43

et truer senteret: Tømmer butikker og nitterer ansatte

ne man ro inne i kjøpesenteret ved E6-avkjøringen mer. Nå er det nyoppussete kjøpesenteret stengt lom.



Kristina Hågensen
Journalist

Astrid Gerdtz
Journalist

Andrine Sverdrup Wennemo
Journalist

Ola Bjerlo Strande
Journalist

Lars Erik Skreftsrud
Fotograf

Reidar Gregersen
Fotograf

Vi rapporterer fra Lillehammer

Publisert 11. aug. kl. 17:14
Oppdatert 11. aug. kl. 17:43



nmer butikke

jøringen
stengt



Kristina Håger
Journalist

Astrid Gerdtz
Journalist

Andrine Sverdrup Wennemo
Journalist

Ola Bjerlo Strande
Journalist

Lars Erik Skreftsrud
Fotograf

Reidar Gregersen
Fotograf

Vi rapporterer fra Lillehammer

Publisert 11. aug. kl. 17:14
Oppdatert 11. aug. kl. 17:43

net truer senteret nitterer ansatte

nne man ro inne i kjøpesenteret ve
nmer. Nå er det nyoppussete kjøpe
flom.



Et truer senteret: Tømmer butikker og fjerner ansatte

man ro inne i kjøpesenteret ved E6-avkjøringen
r. Nå er det nyoppussete kjøpesenteret stengt
n.



Kristina Hågensen
Journalist
Astrid Gerdtz
Journalist
Andrine Sverdrup Wennemo
Journalist
Ola Bjerlo Strande
Journalist
Lars Erik Skrefsrud
Fotograf
Reidar Gregersen
Fotograf

: Tømmer butikker og

d E6-avkjøringen
senteret stengt



Kristina Hågensen
Journalist
Astrid G
Journalist
Andrine
Journalist
Ola Bjer
Journalist
Lars Erik
Fotograf
Reidar G
Fotograf

Et truer senteret: Tømmer butikker og fjerner ansatte

an ro inne i kjøpesenteret ved E6-avkjøringen
Nå er det nyoppussete kjøpesenteret stengt

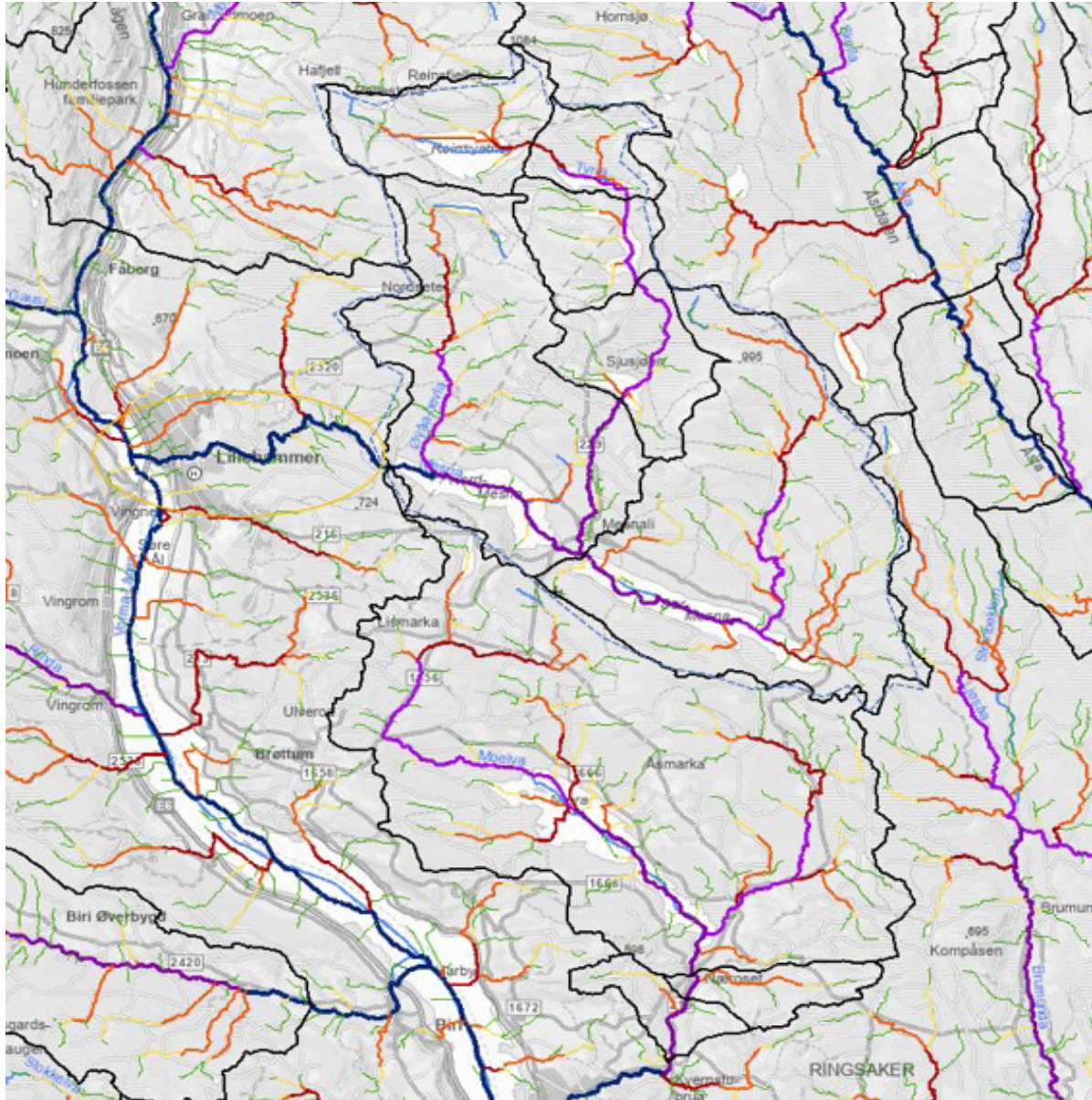


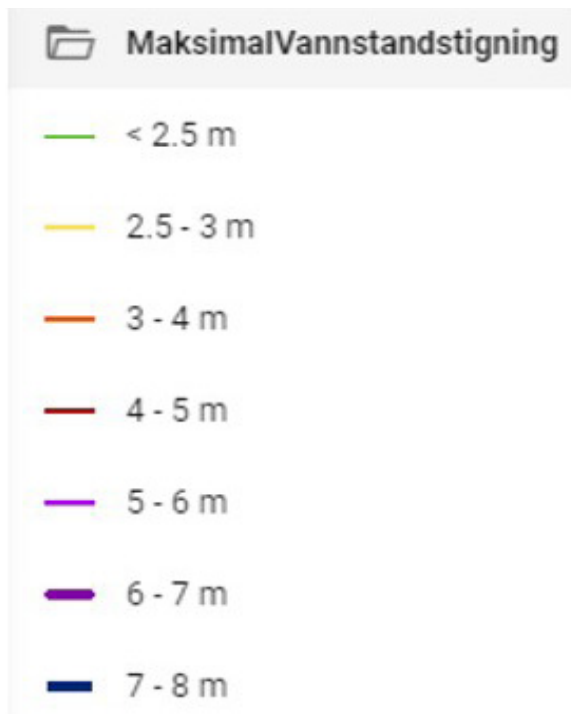
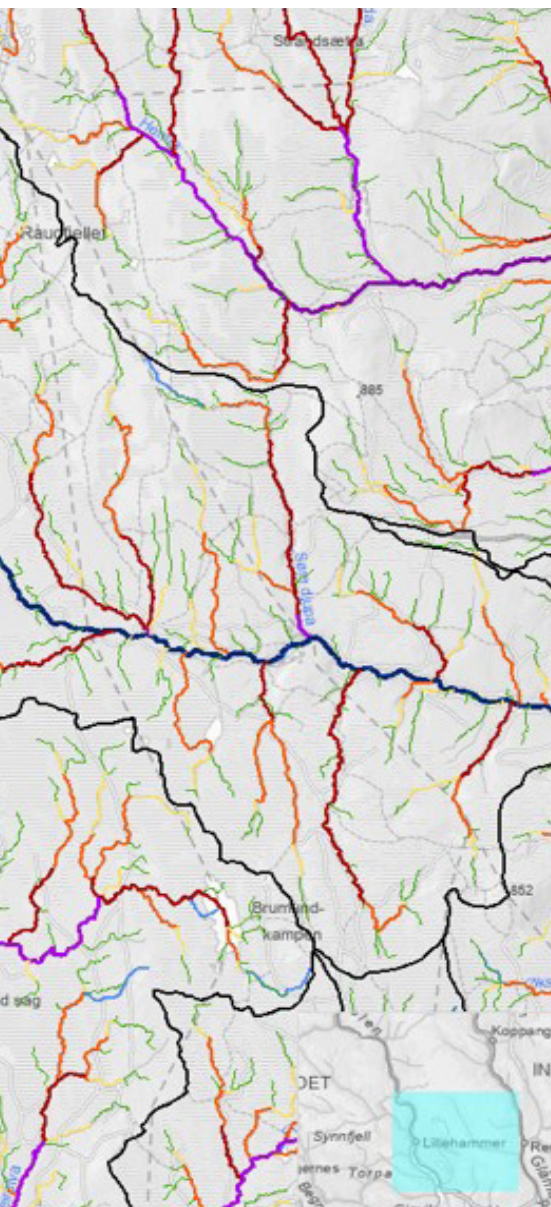
Vi rappo
Publiser
Oppdat

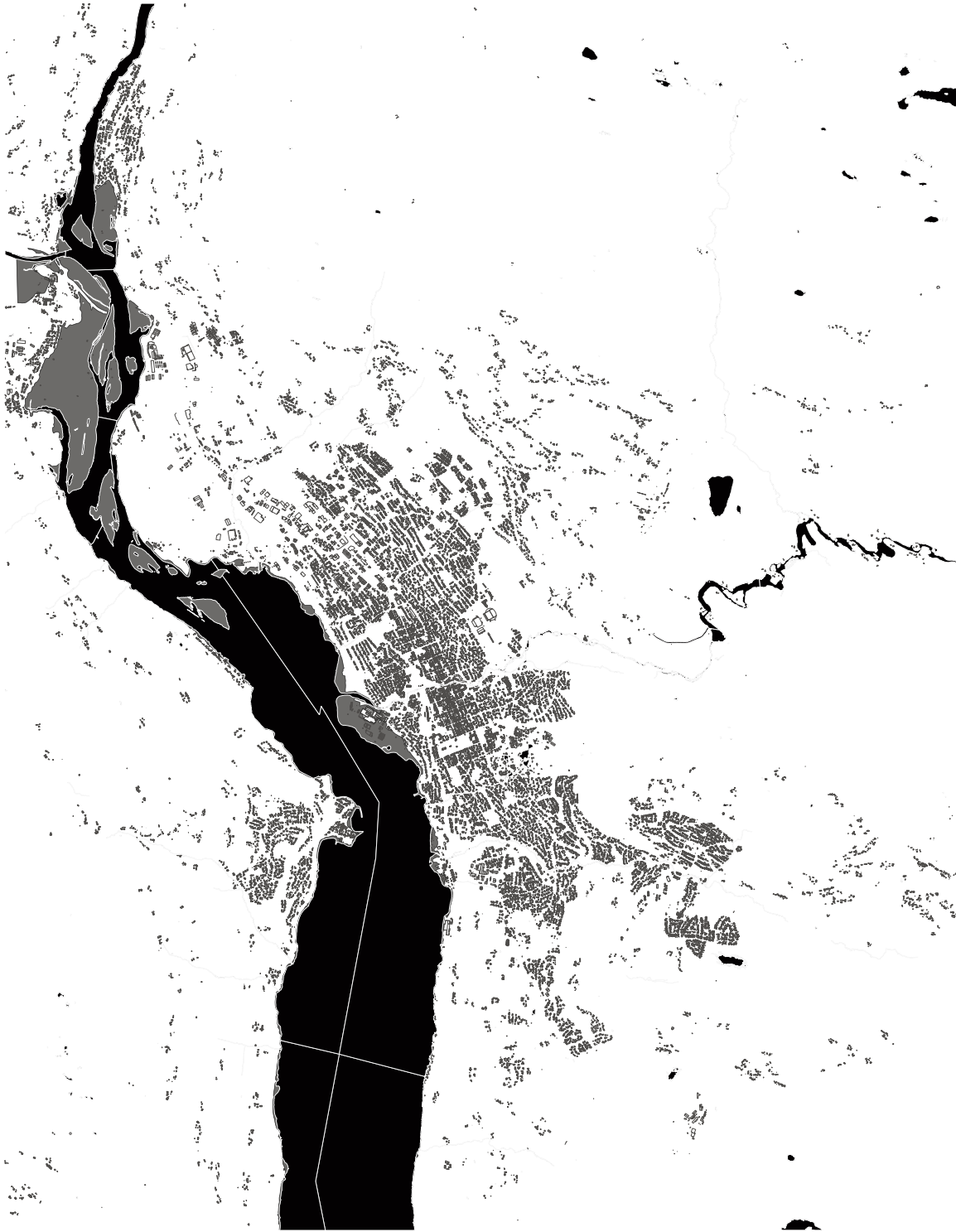
Kristina Hågensen
Journalist
Astrid Gerdtz
Journalist
Andrine Sverdrup Wennemo
Journalist
Ola Bjerlo Strande
Journalist
Lars Erik Skrefsrud
Fotograf
Reidar Gregersen
Fotograf

Vi rapporterer fra Lillehammer

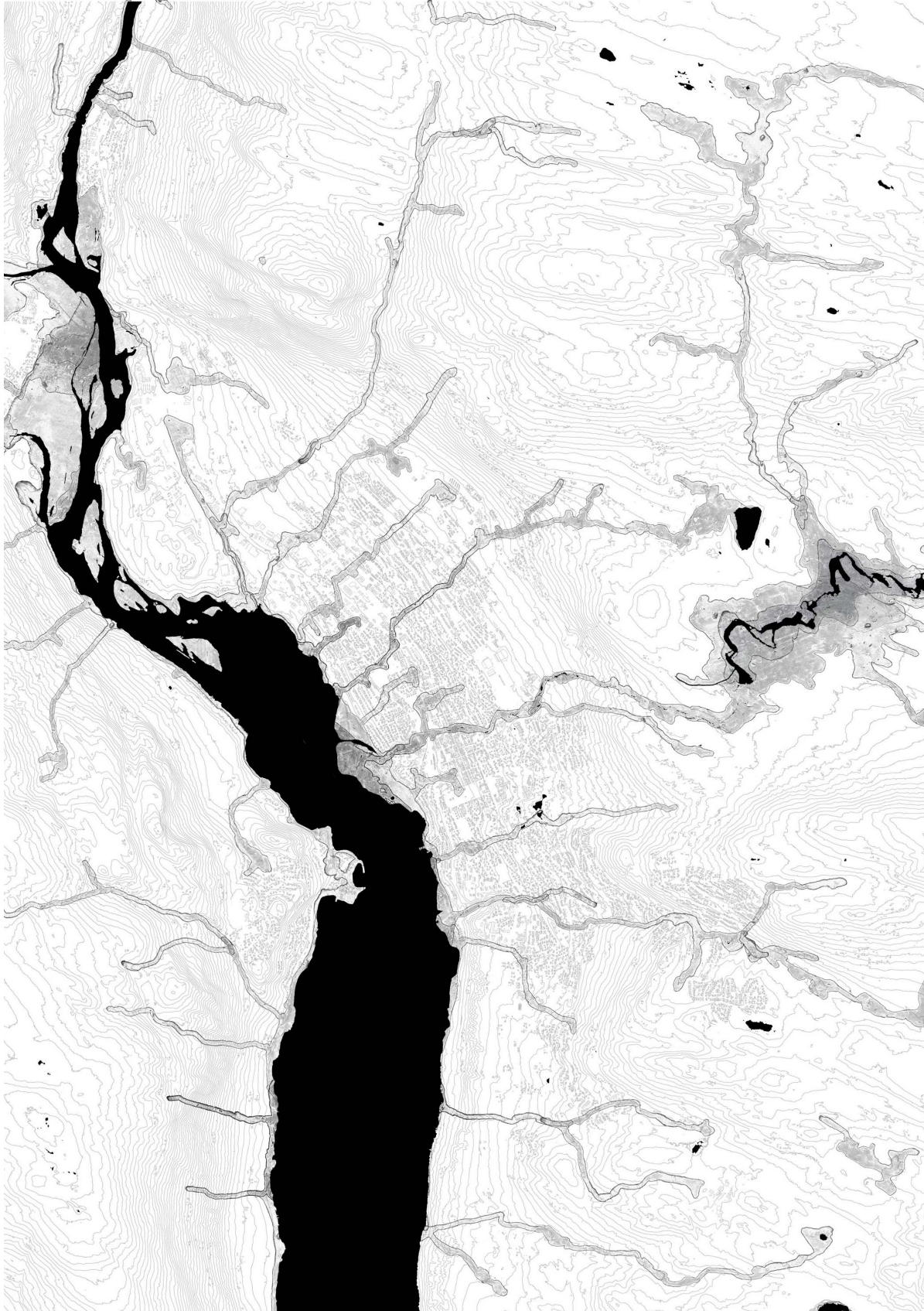
Publisert 11. aug. kl. 17:14
Oppdatert 11. aug. kl. 17:43

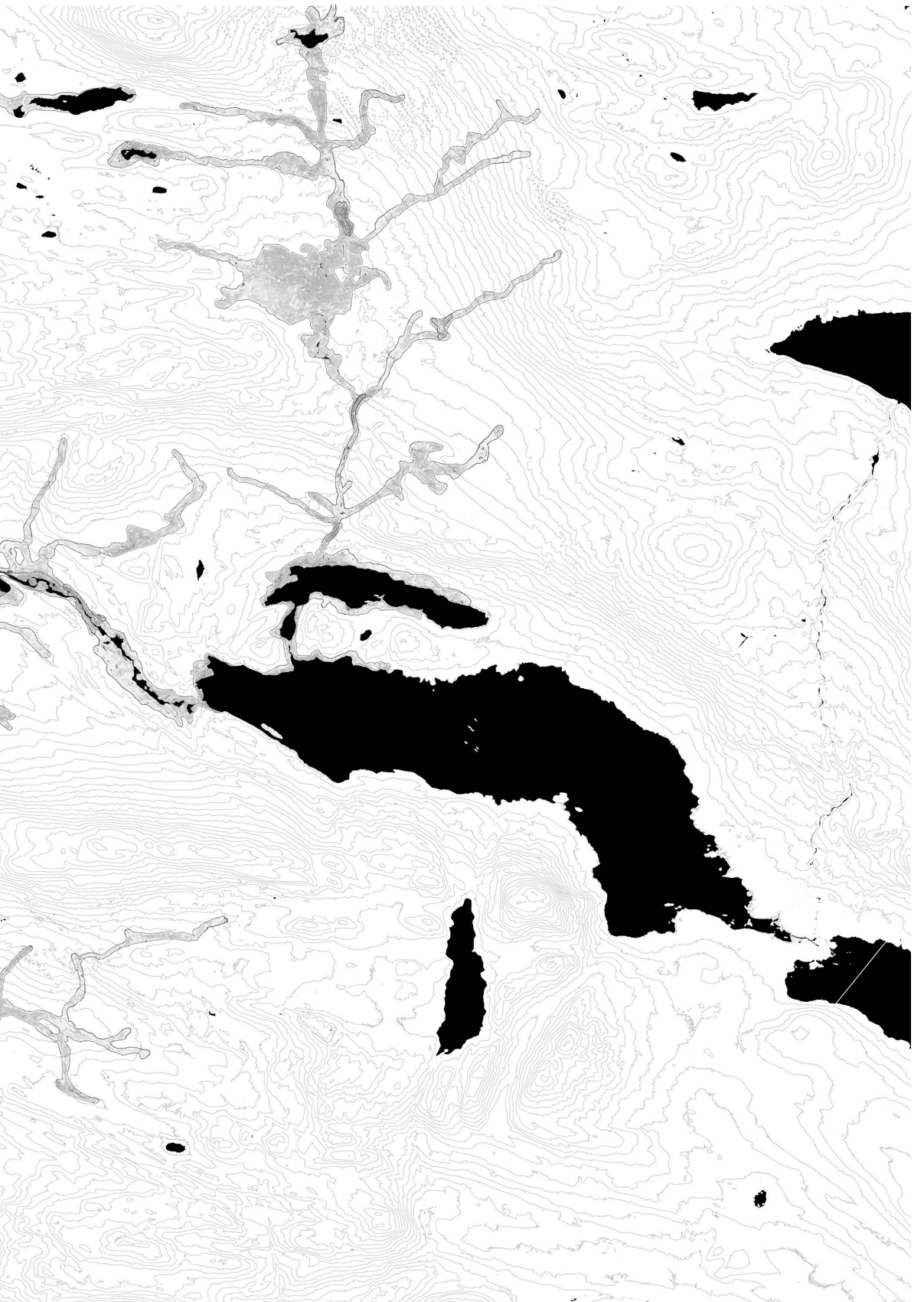












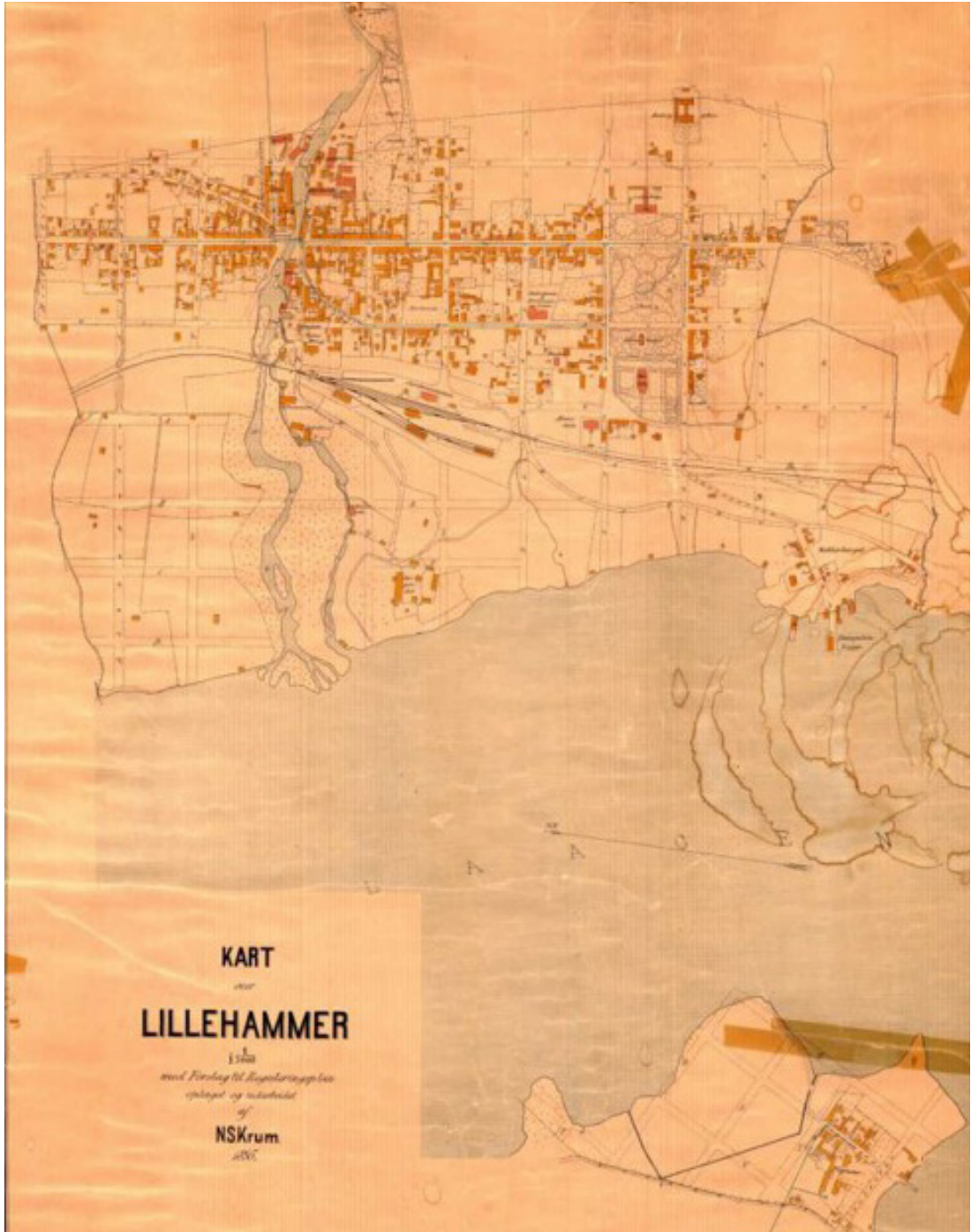
Flood zone, July 2023

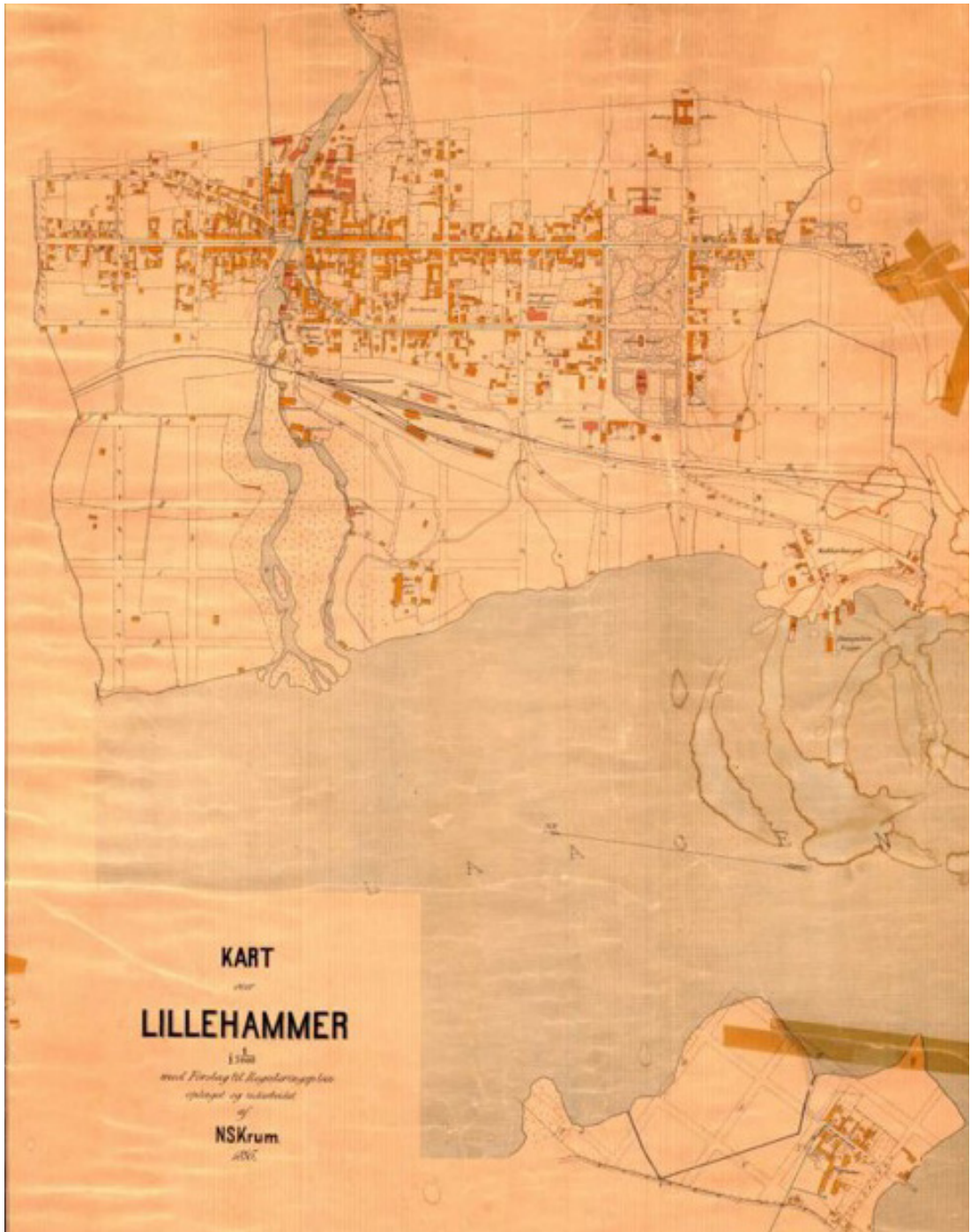
LILLEHAMMER CONTEXT





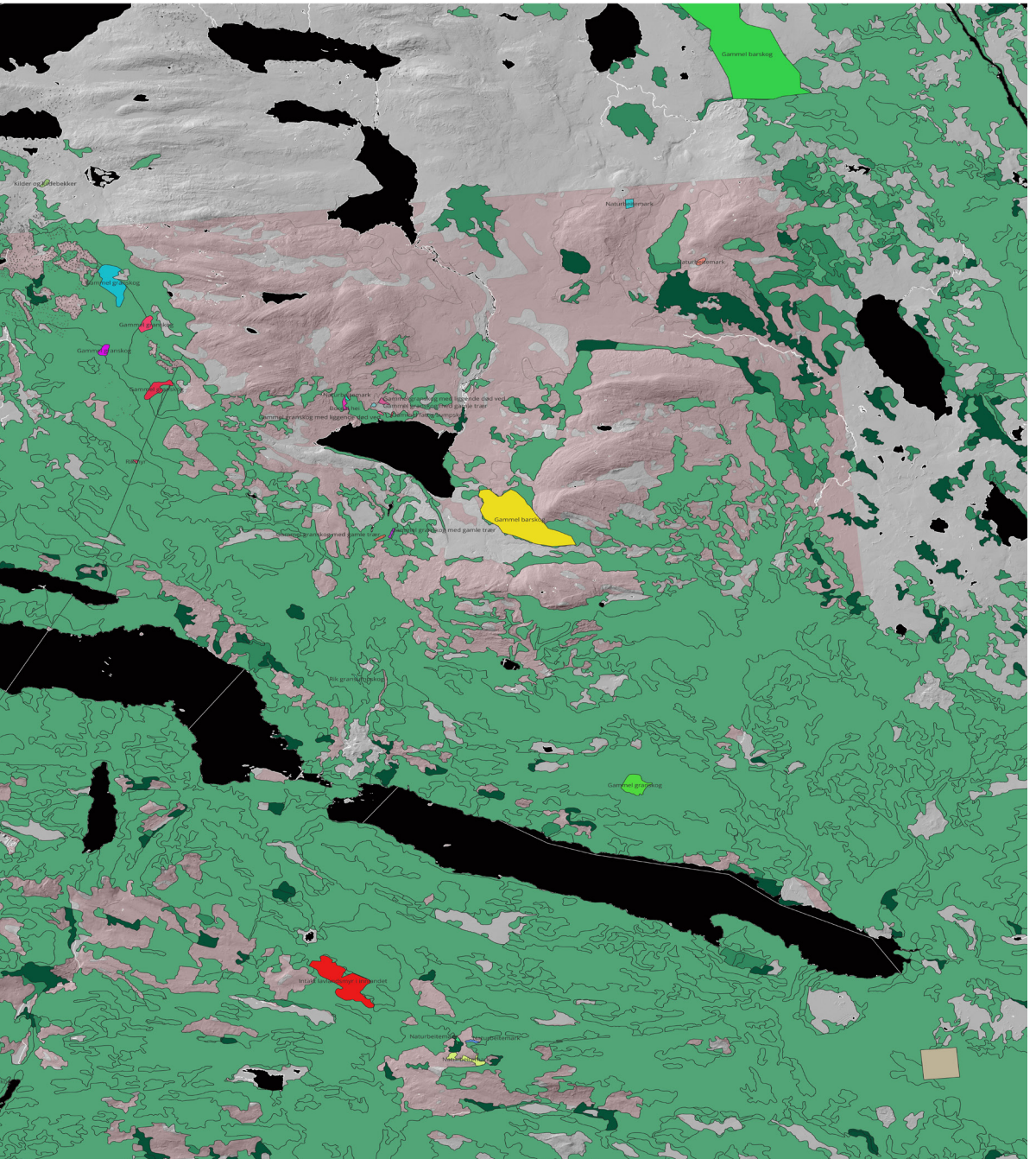


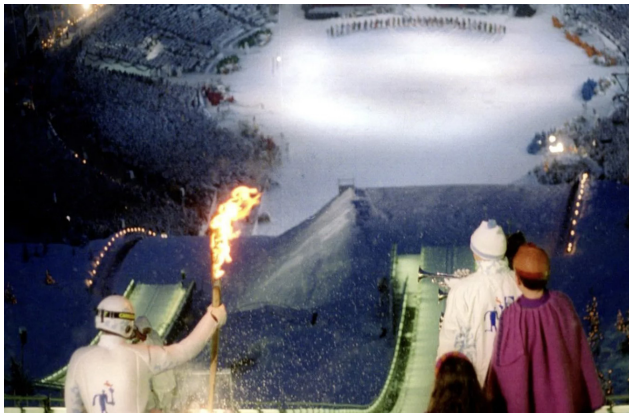






map 1827
Mesna river was originally the reason to found Lillehammer.

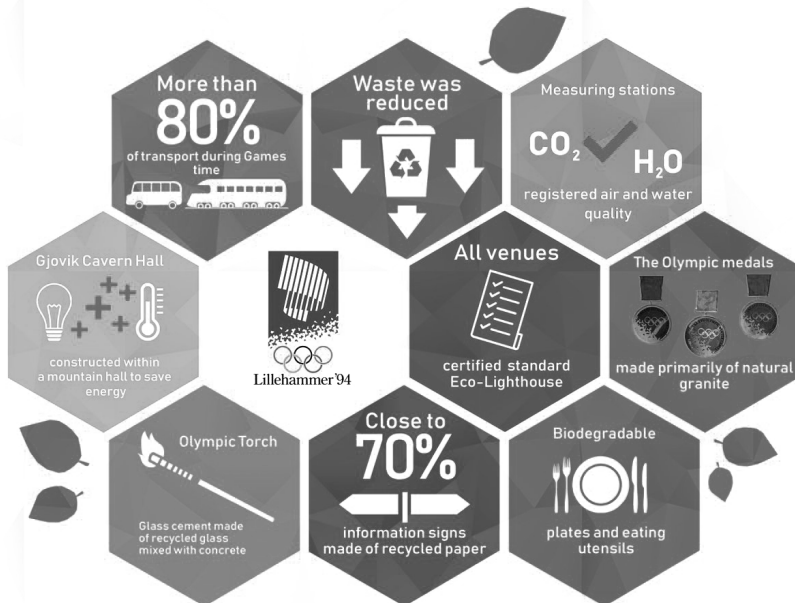






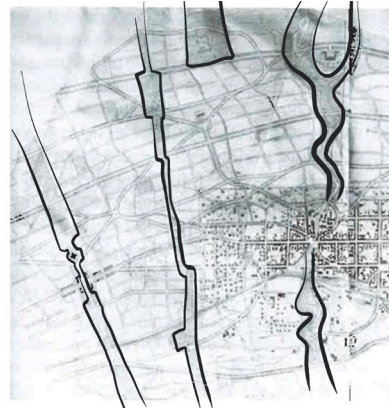
Lillehammer 1994

First 'White Green Games'

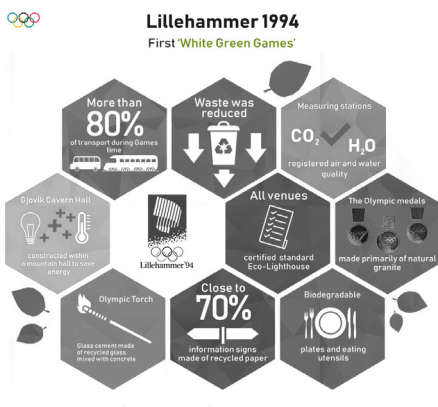
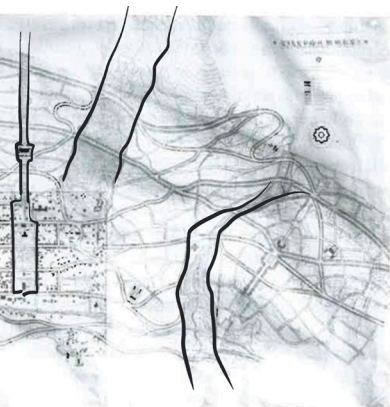




1827



1925

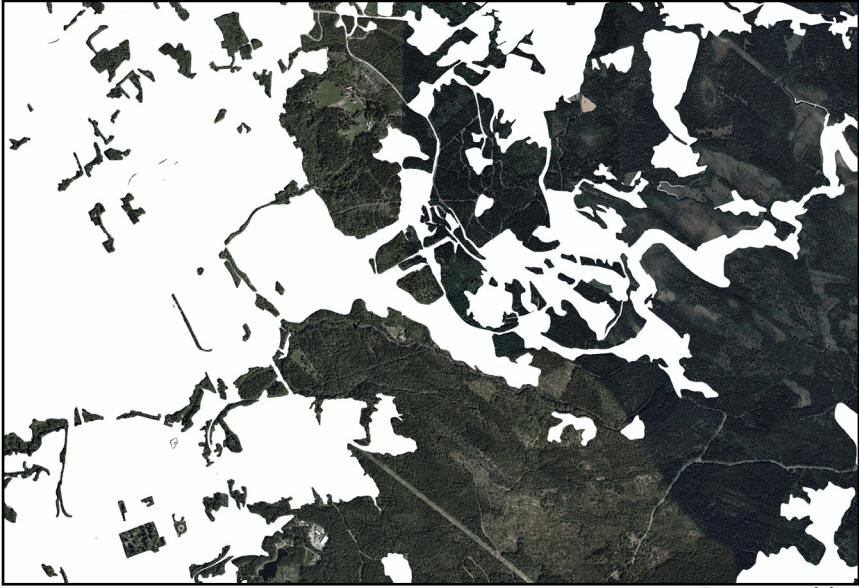


1925

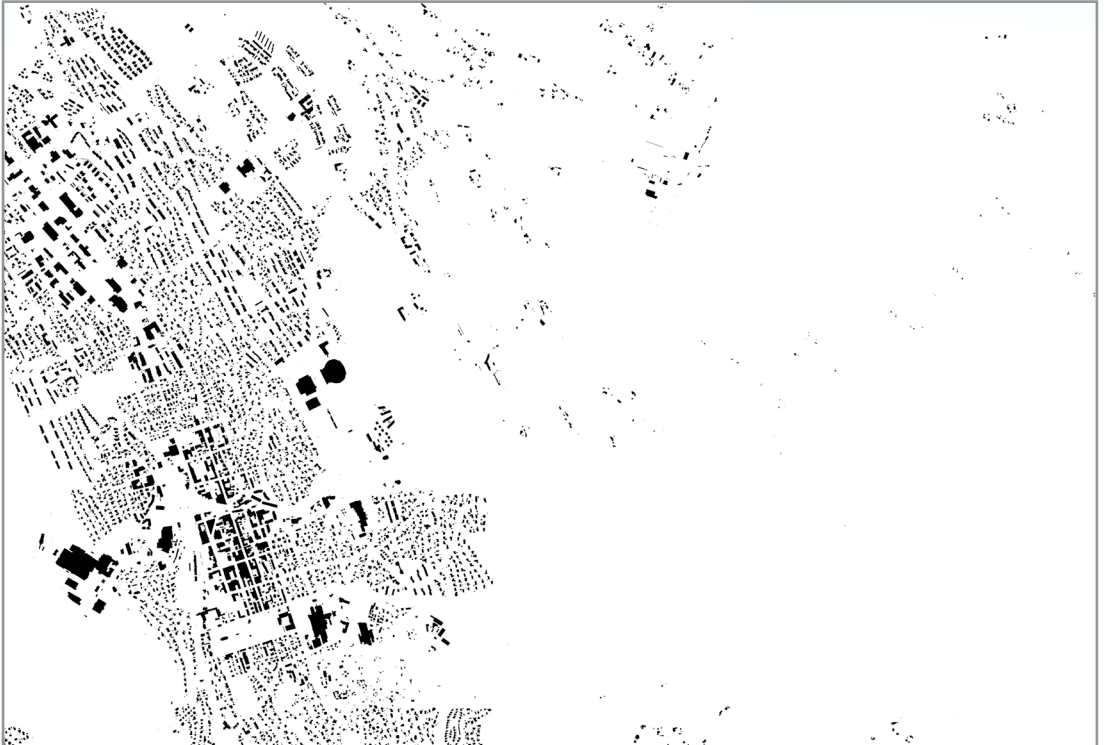








Forest entities



Buildings



Fields entities

In the past there were many fields in Lillehammer, but with a time they were taken and built on.



Mesna kultursti i Lillehammer

720 позначок(-ки) «Подобається» • читачі: 741

Вподобано

Повідомлення

Шукати

[Дописи](#)

[Інформація](#)

[Згадки](#)

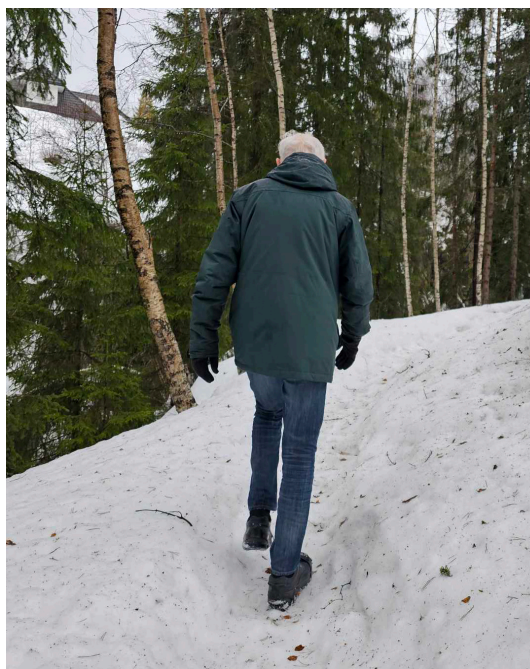
[Читачі](#)

[Світлини](#)

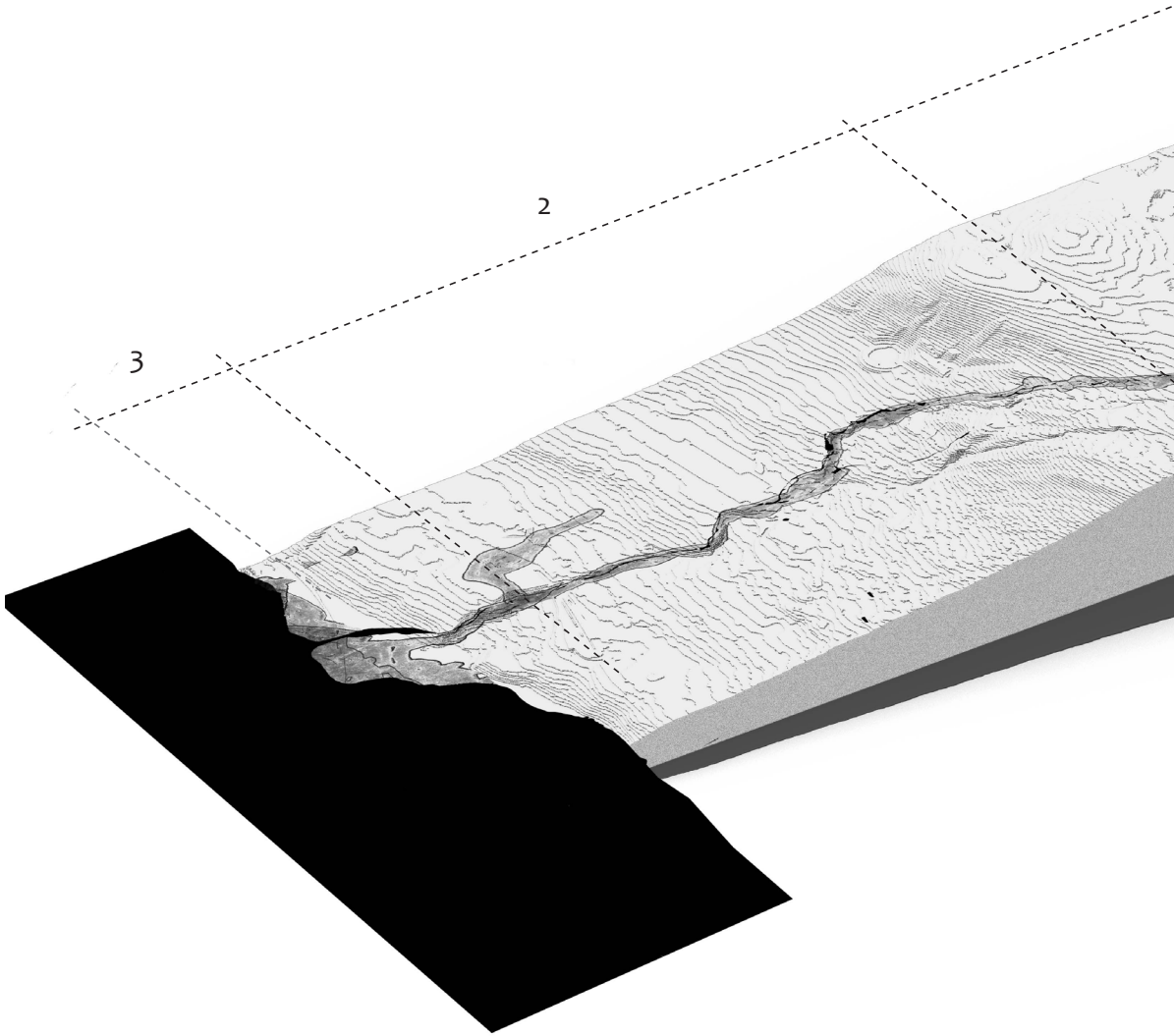
[Відео](#)

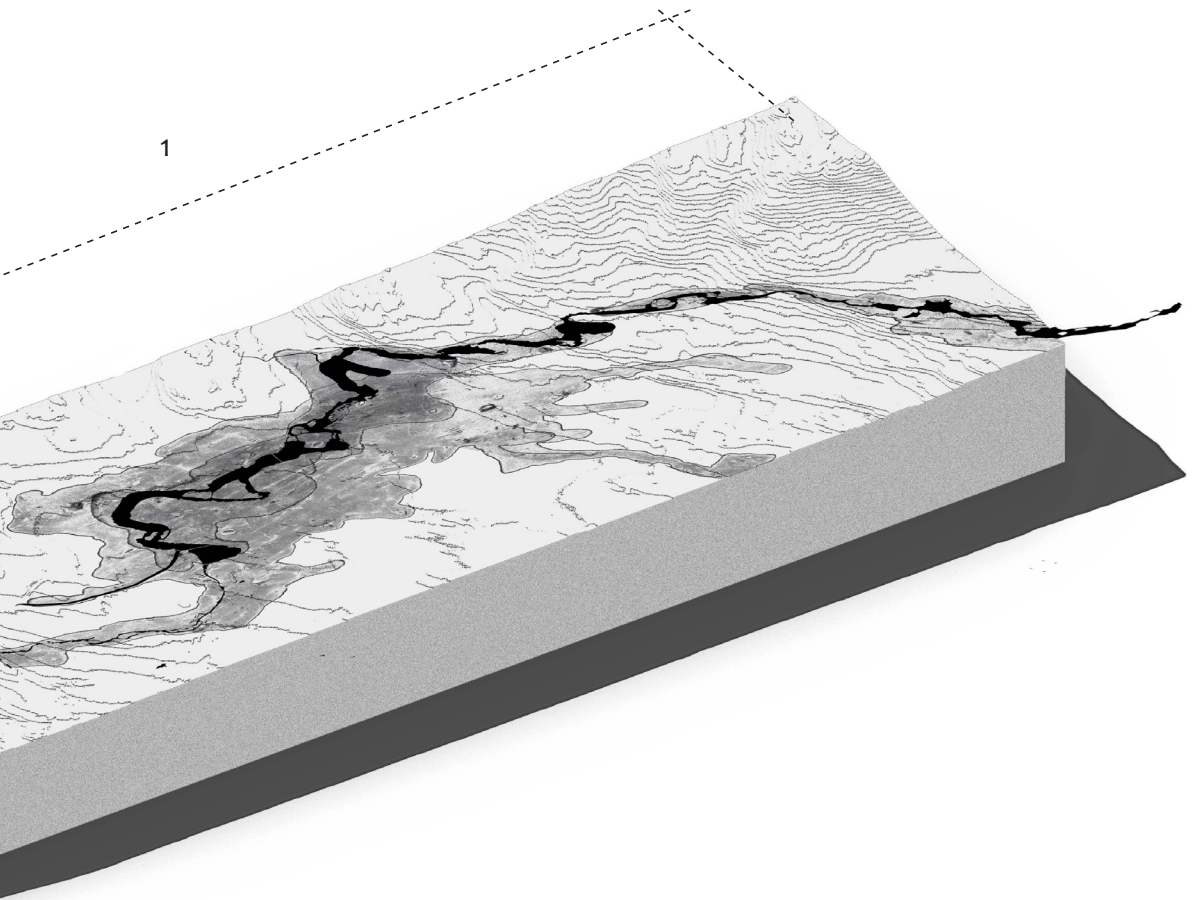
[Більше](#) ▾





After a desk-research of local community actors, I met and had a walk with one of the member of local organisation - Mesna Kultursti. It is a volunteer organisation, that they are restoring and taking care of a walking path alongside the Mesna river. The members believes that the river is as an essential part of the city's identity.

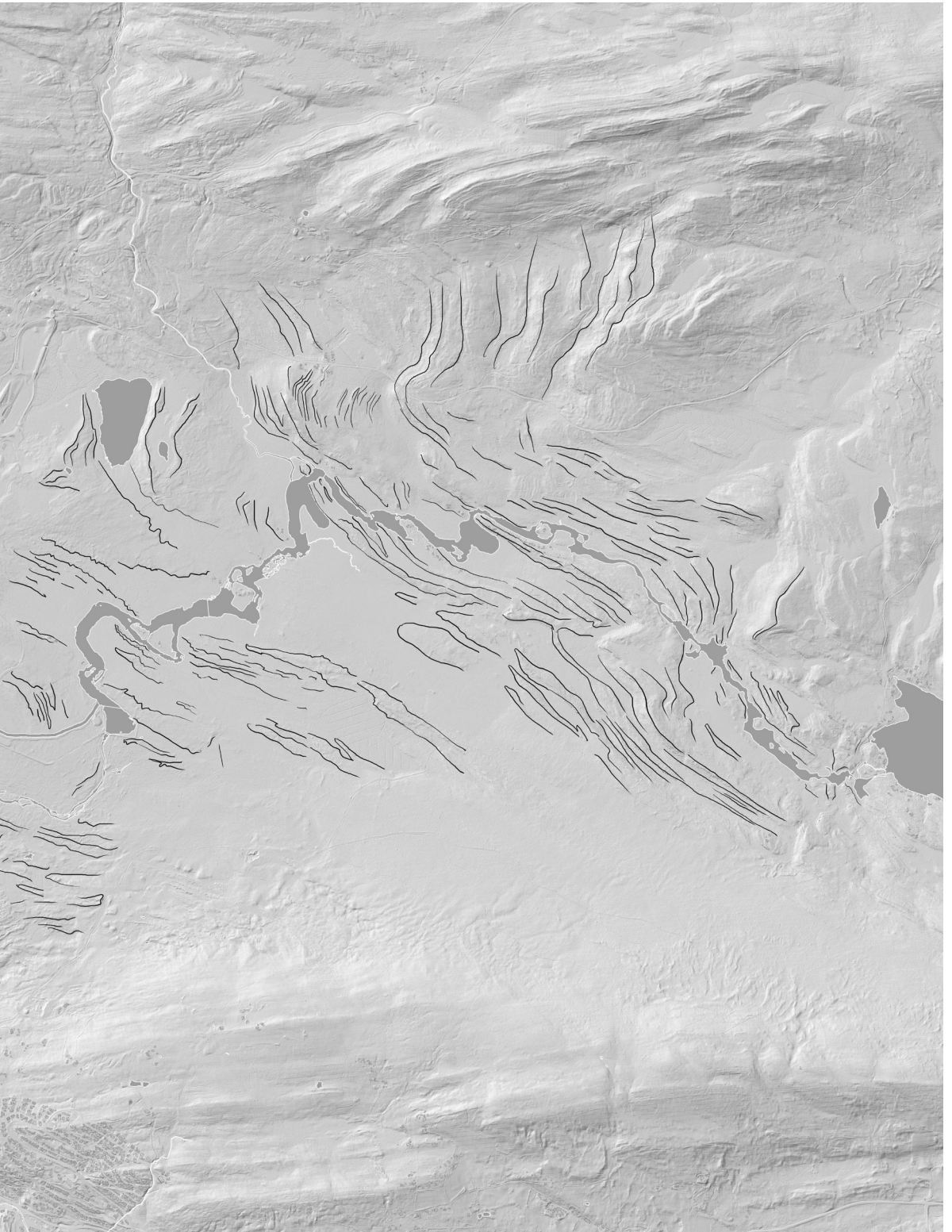


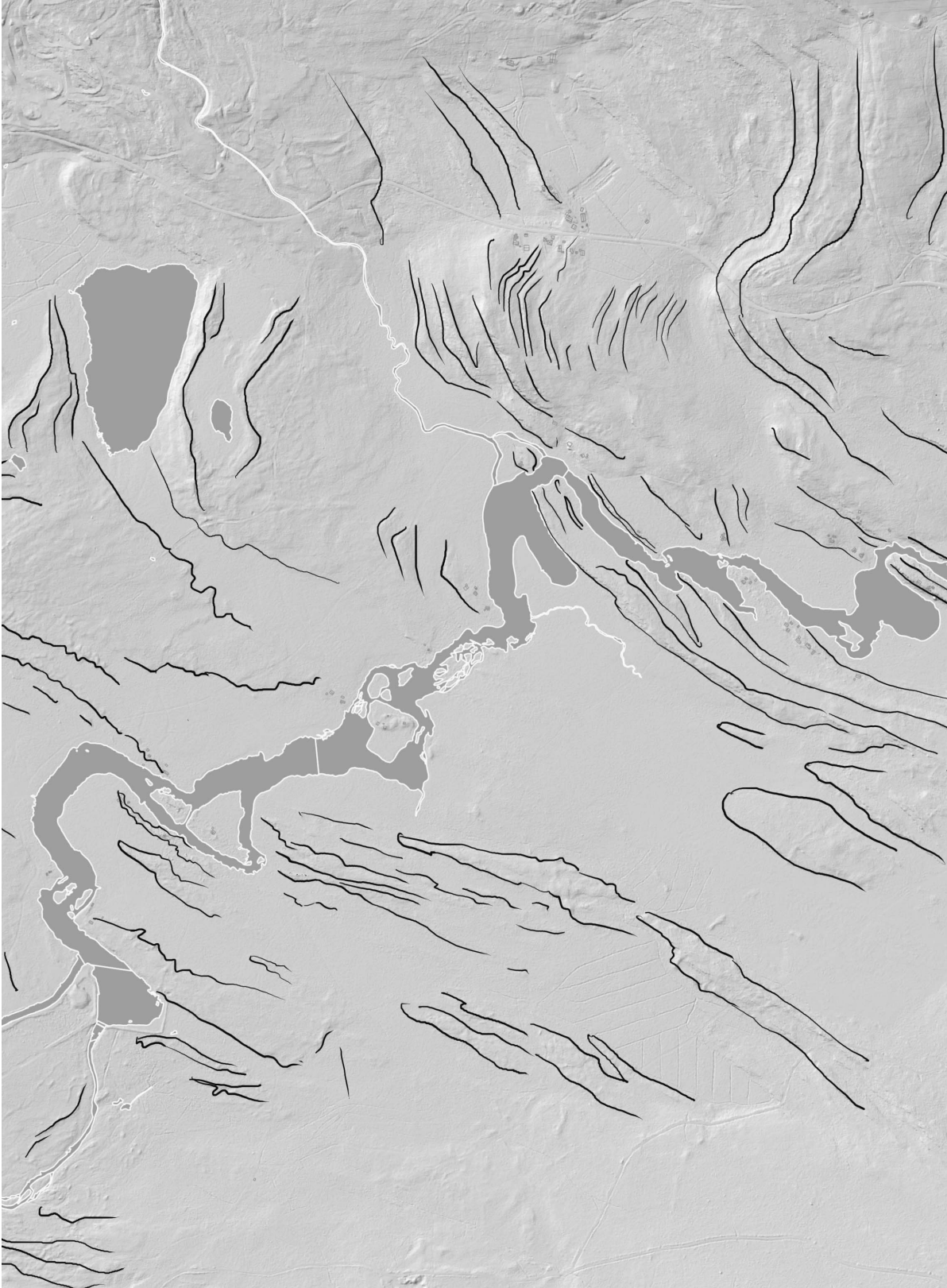


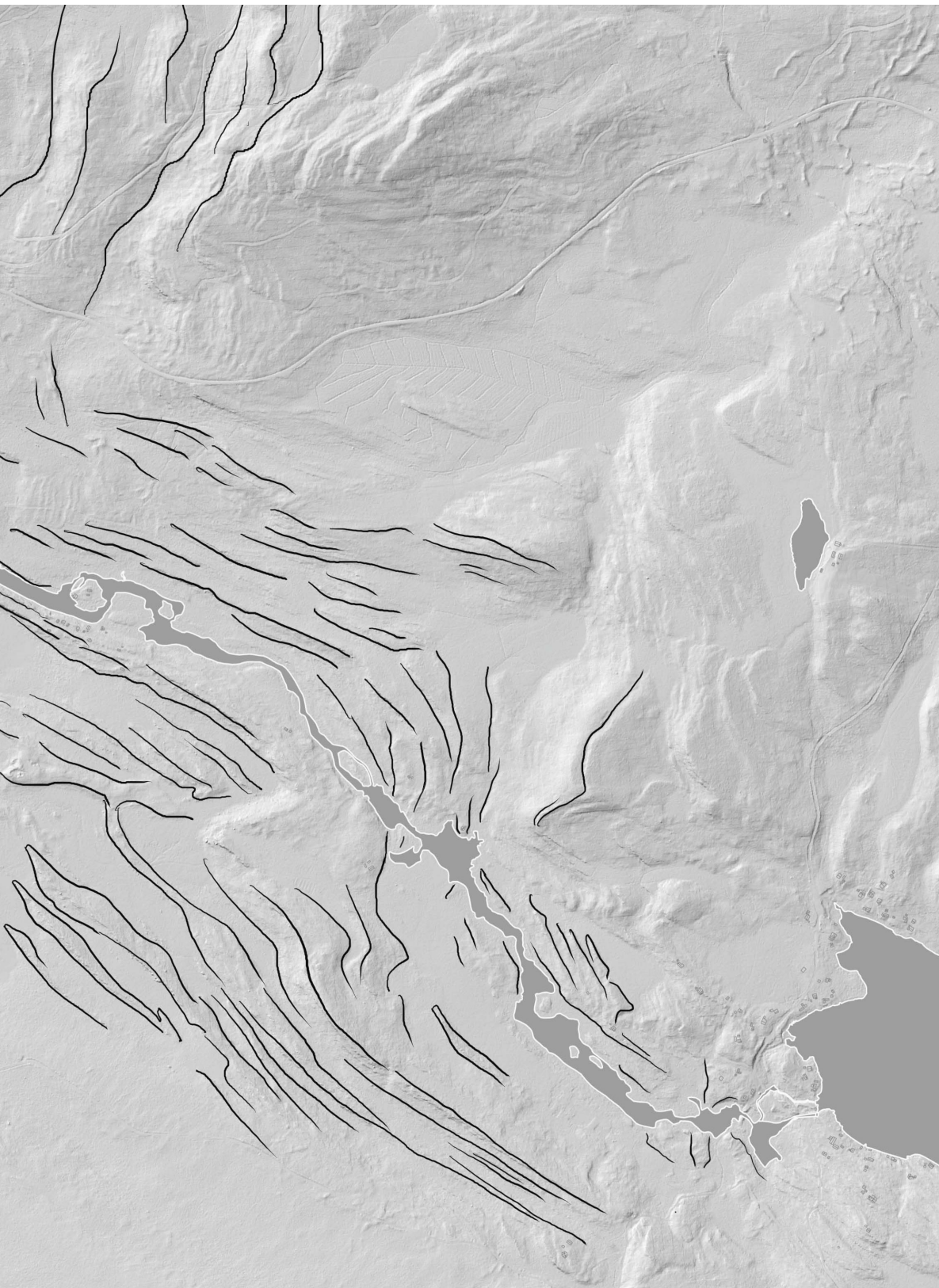
After identifying that Lillehammer city center is affected by the Mesna river only, but Strandtorget is affected by 2 water sources, the site was divided in 3 zones.



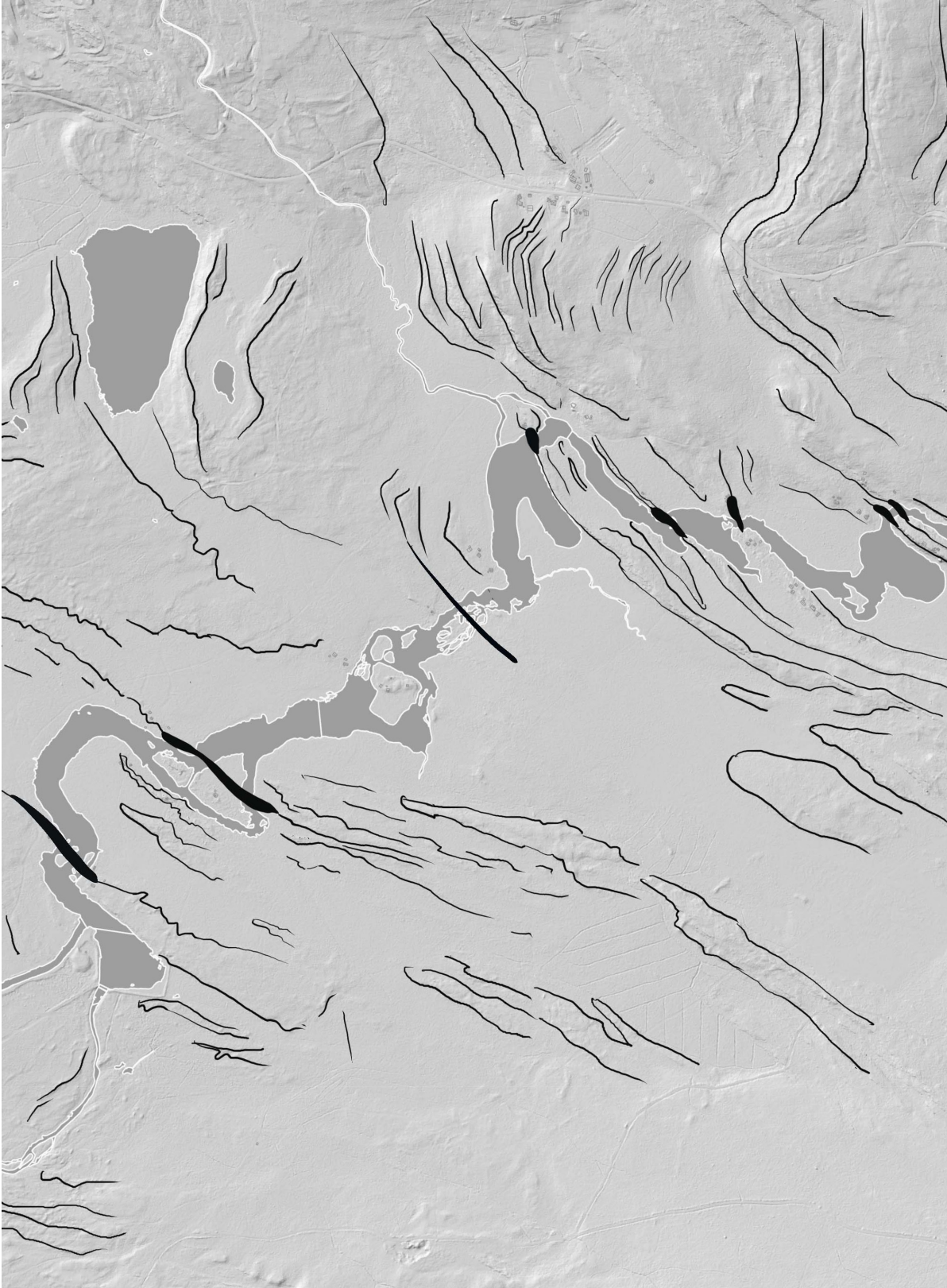
This map shows the directionalities of hills and directionalities of water movement. This document is a ground for a design as bla bla bla.

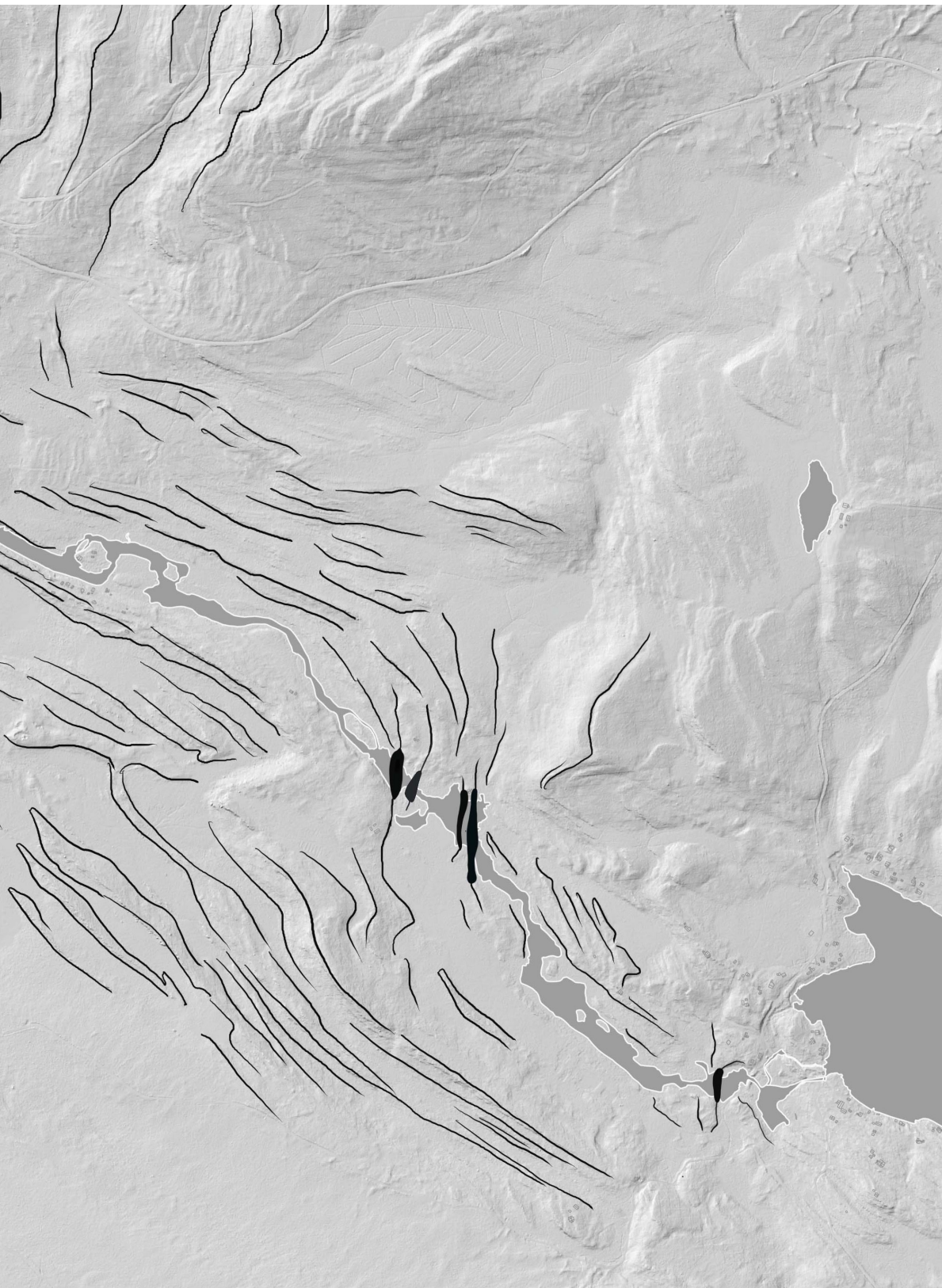




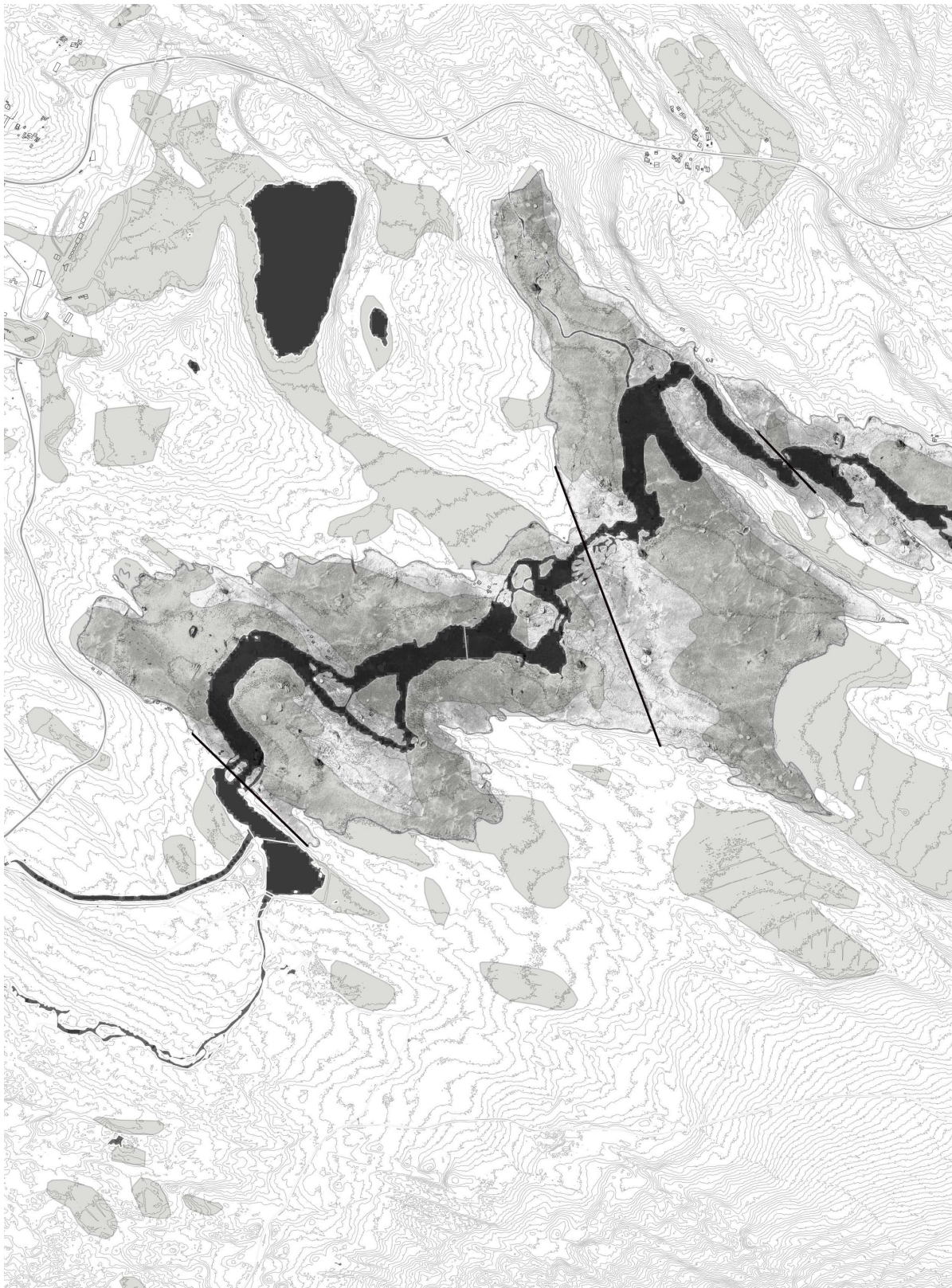


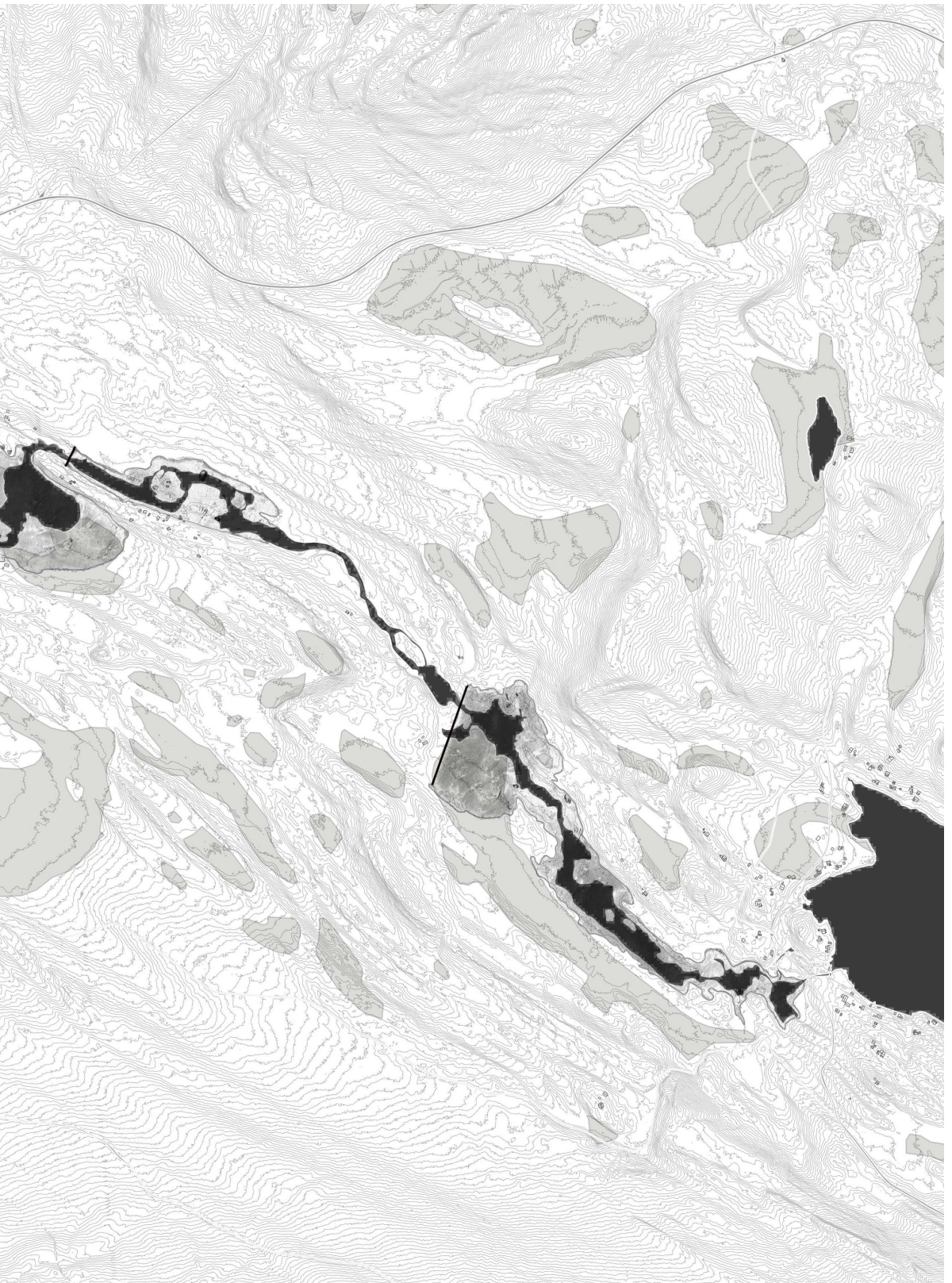
Morphological analysis zoom



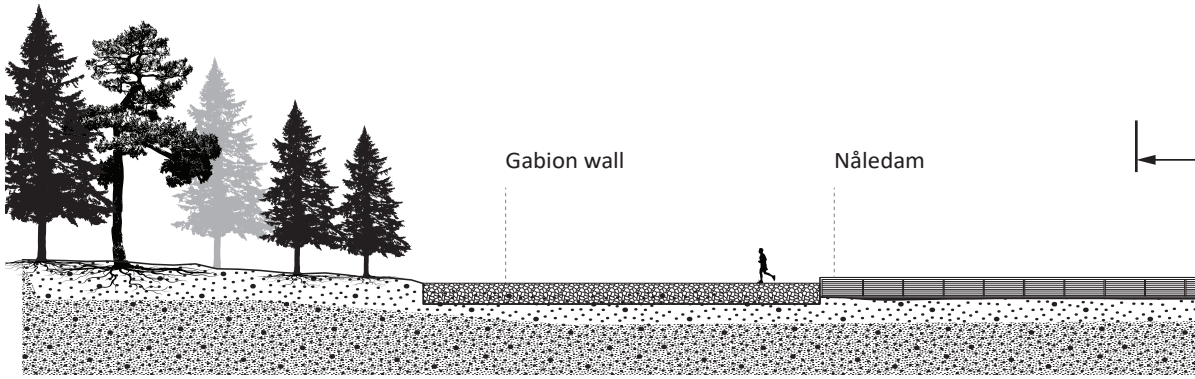


New entities were proposed as a connection





Some of the entities were then transformed into dams. Dams are 2 meters high and serves also as a continuation of a path



Gabion wall

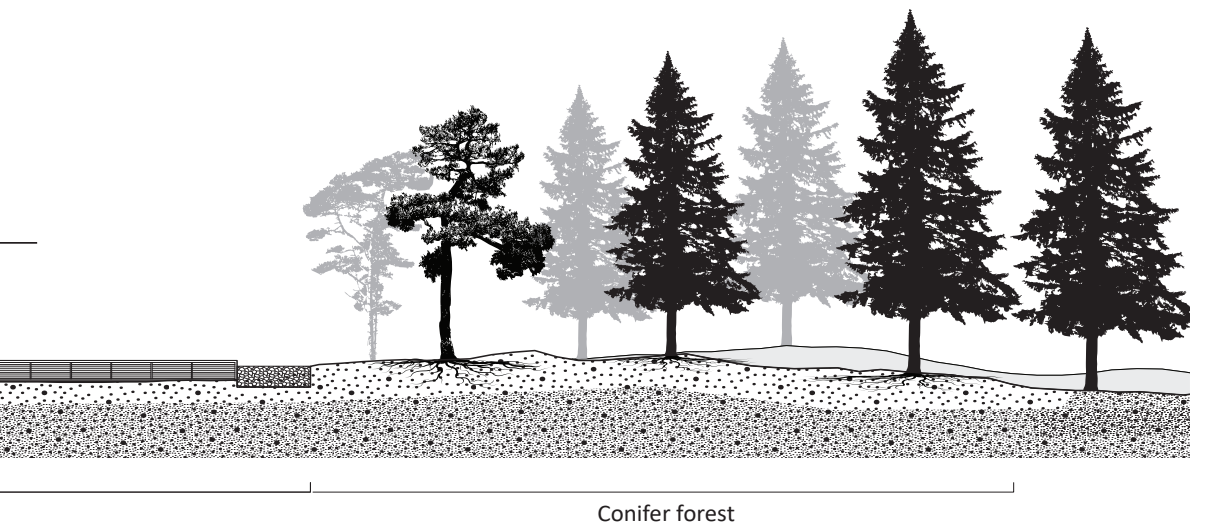
Nåledam

Conifer forest

Dam basin

10m

50m

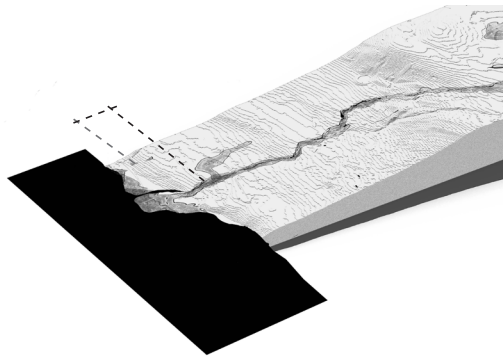


Big scale Section - also communicates how peat landscape affect the strata

N[ledam - is an old type of dam that uses wooden planks as building material. In this way the project also connects with the cultural landscape as such dams used to be common in the region.



STRANDTORGET CONTEXT





1959



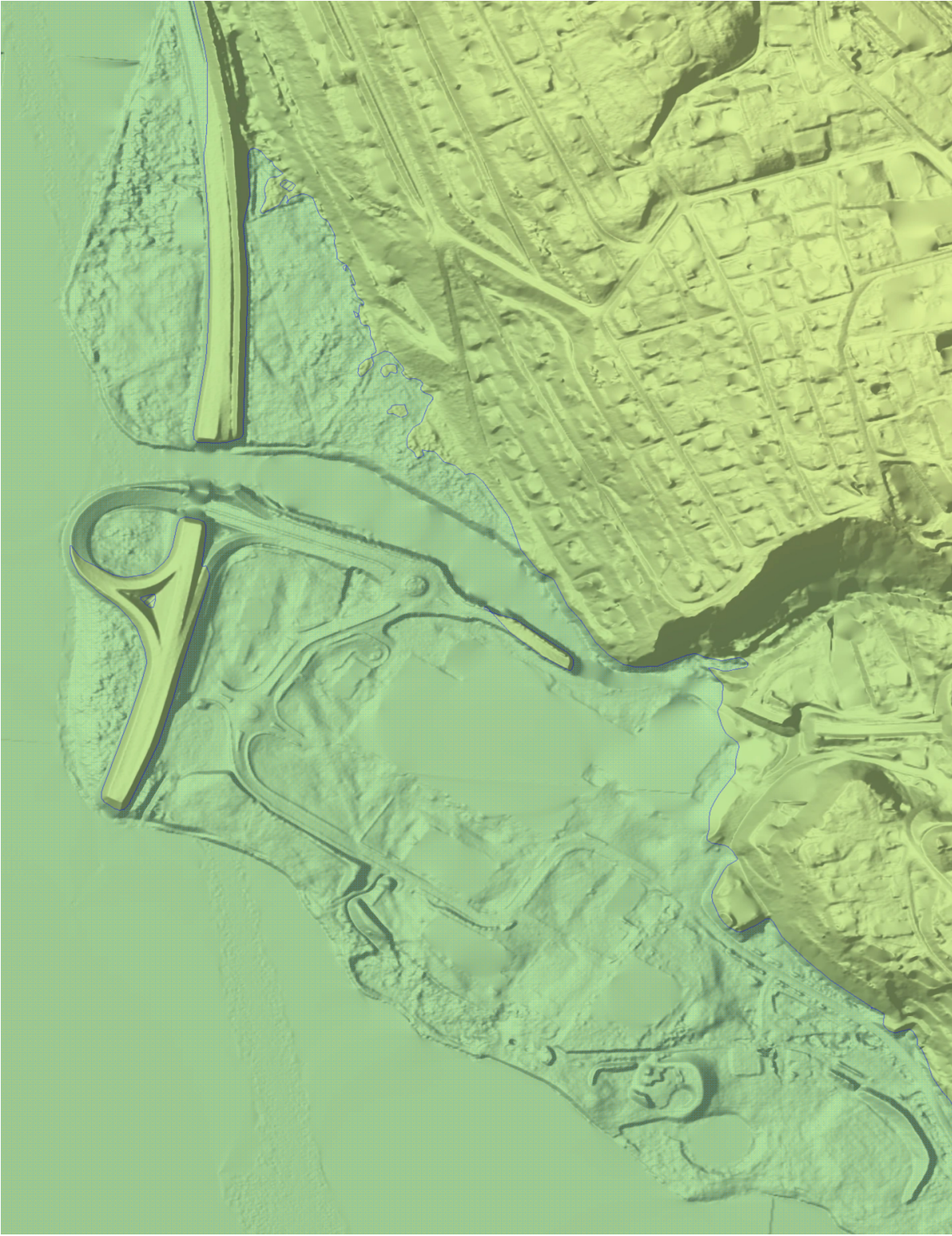
1968

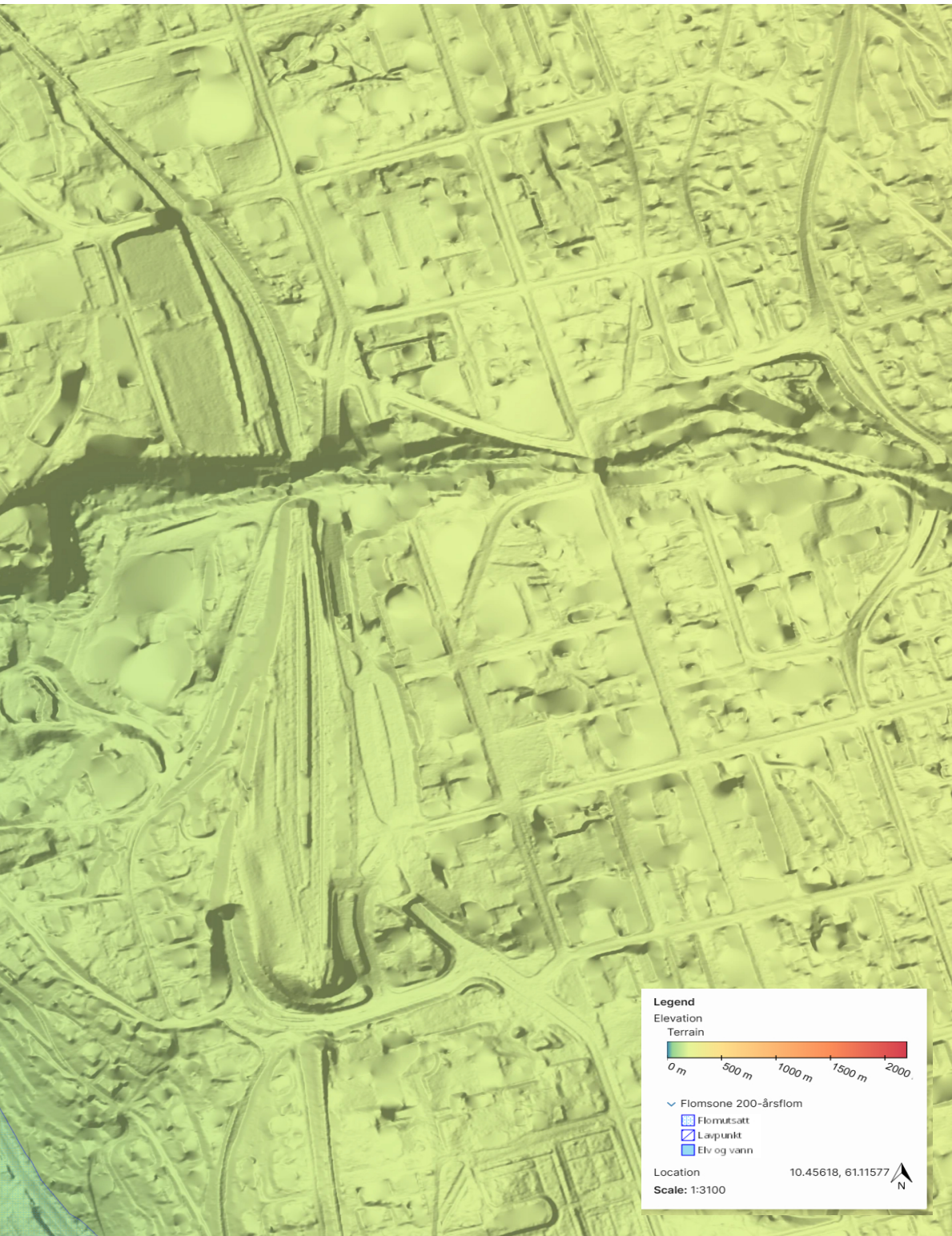


1967

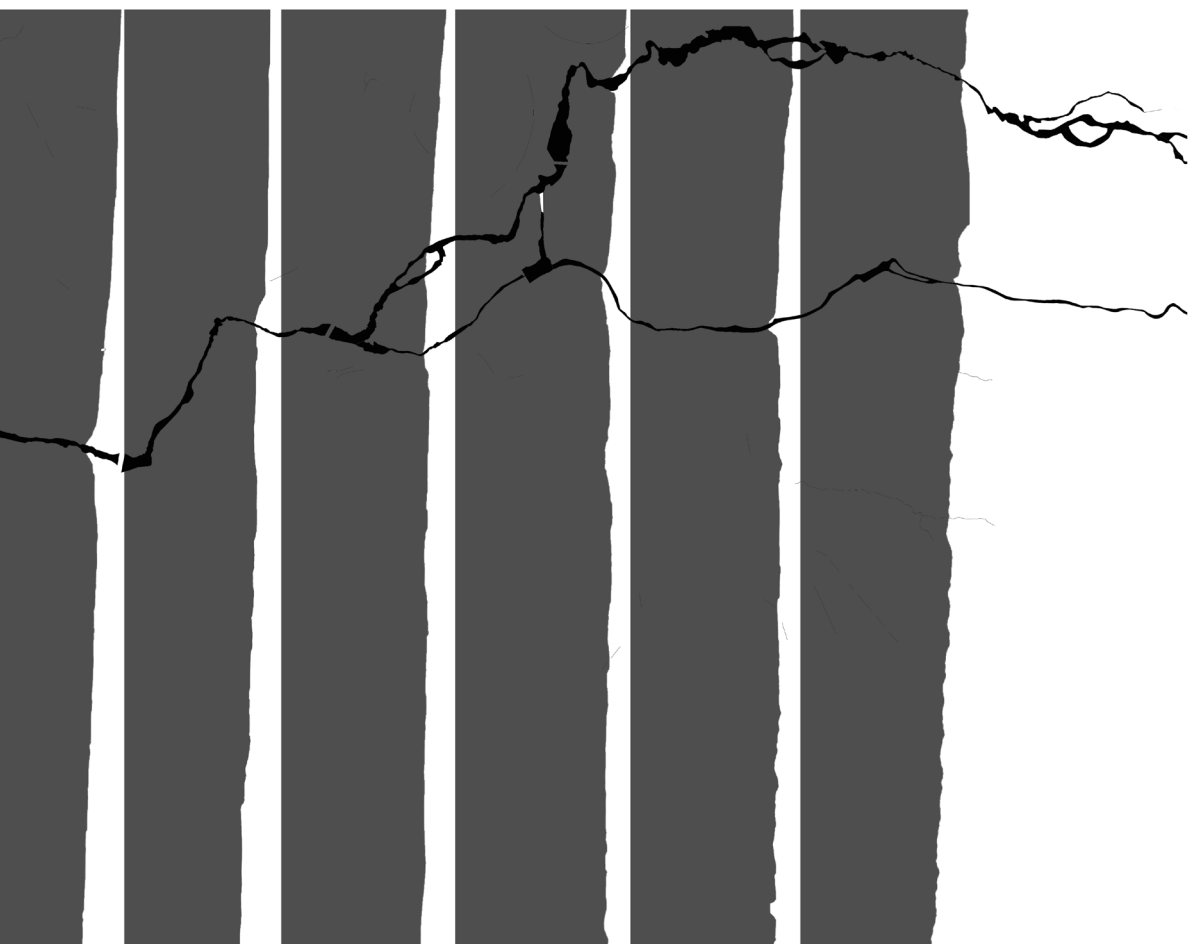


2004



















Fisket bil i Mjøsa i 1957

En dag i oktober 1957 ble det arrangert stor fiskekonkurranse. Folket kjempet om den største fisken. Premien var en Wartburg bilrasjonering. Bilen kostet over 14.000 kroner. Fotballklubben gikk sammen om arrangementet. (Foto: Hans T. Løkken)



Bilde 8 av 19

ranse langs Vingromlandet. 1.350 ivrige fiskere
de Luxe-bil, gjeve saker mens det ennå var
ubben Fremad og Lillehammer Presseklubb hadde





flood demolished





1: Basisalternativ er i tråd med de øvrige tegningene og diagrammene i områdeprogrammet. En kombinasjon av større volum mot eksisterende kjøpesenter som trappes ned mot vannet, fra nord til sør.



2: I dette alternativet er det subtile endringer på takformene i forhold til basisalternativet. Bygningsvolumene trappes fortsatt ned mot vannet, men de trappes også litt ned fra øst til vest, for å følge landskapet fra sentrum mot vannet.

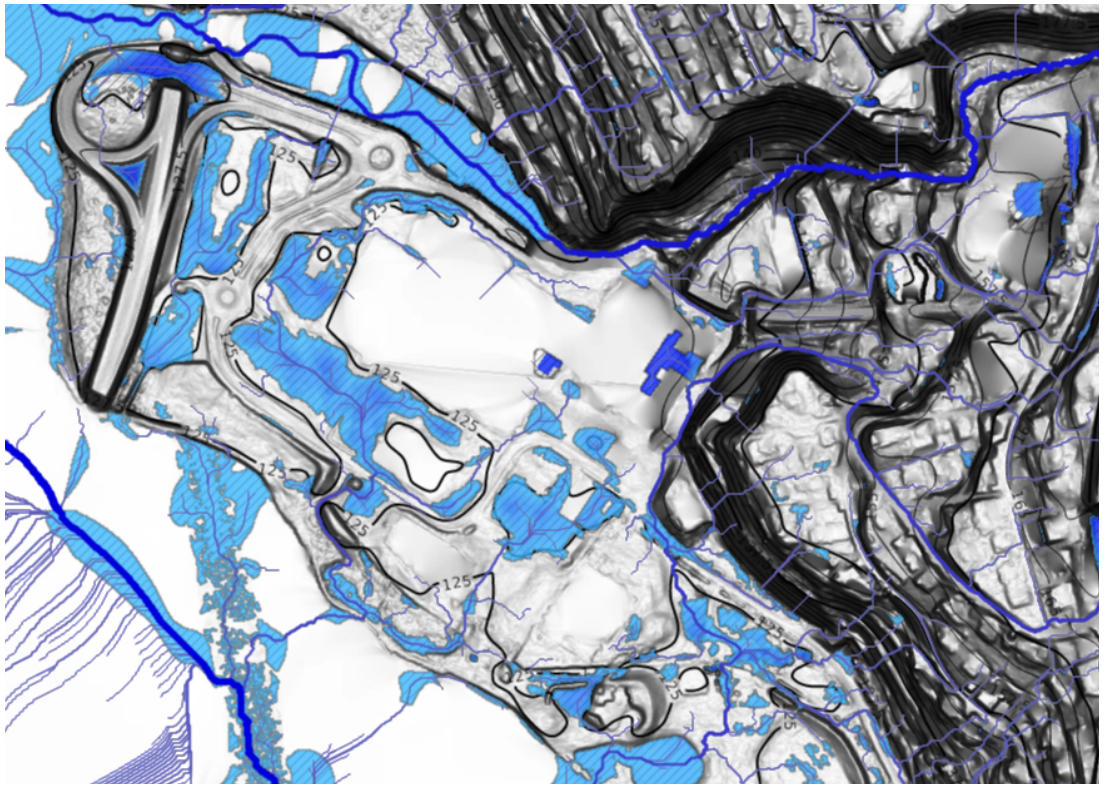


STRANDTORGET DESIGN

History layer:
Coming back to delta, better with flood



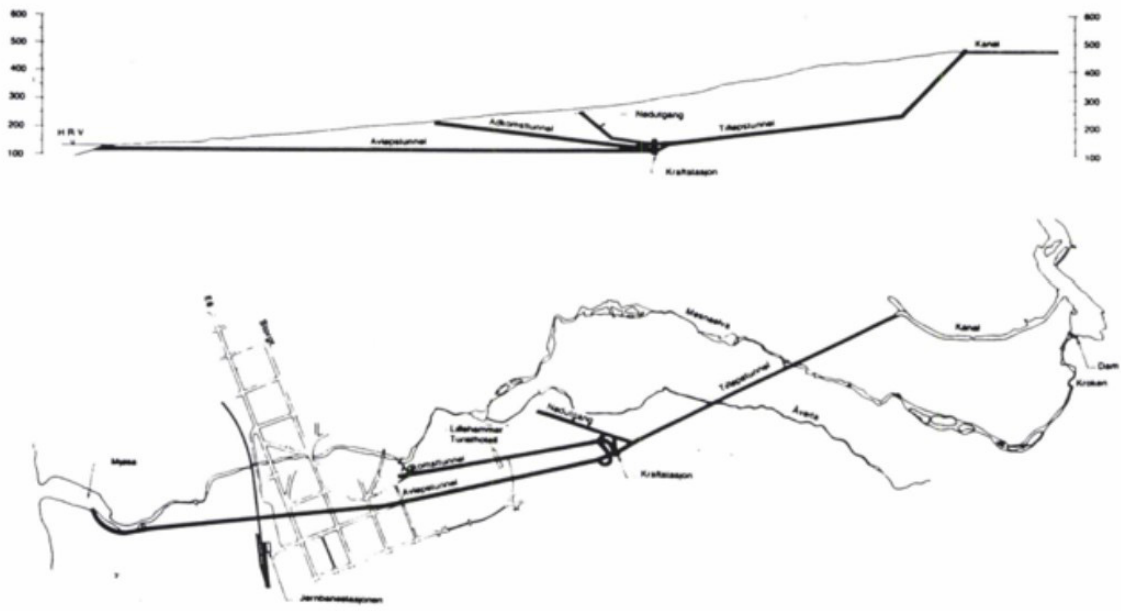
This helped me to understand the scale



Water dynamics -
bla bla bla bla bla bla bla bla bla bla bla



Canal 1

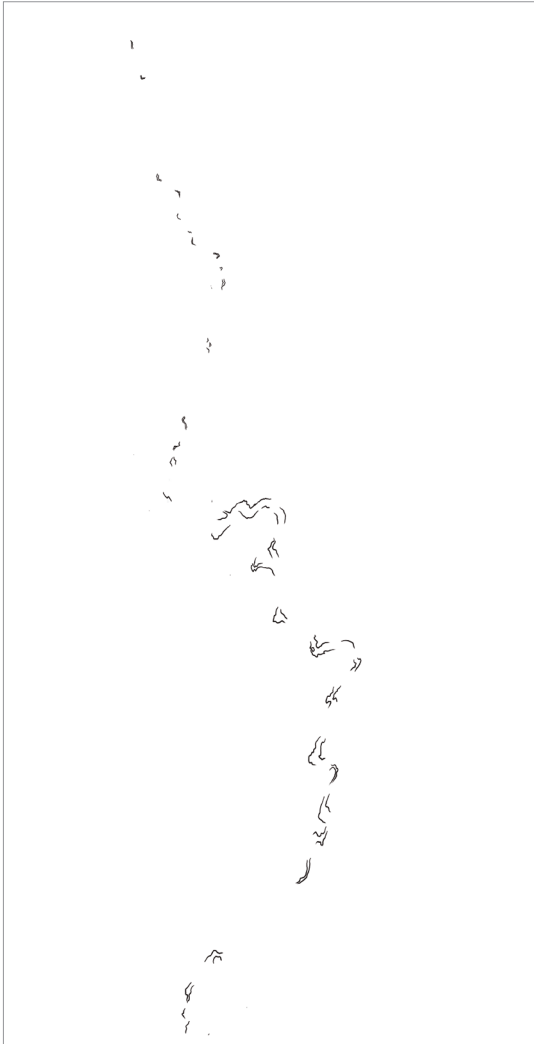


Water dynamics -
 bla bla bla bla bla bla bla bla bla bla





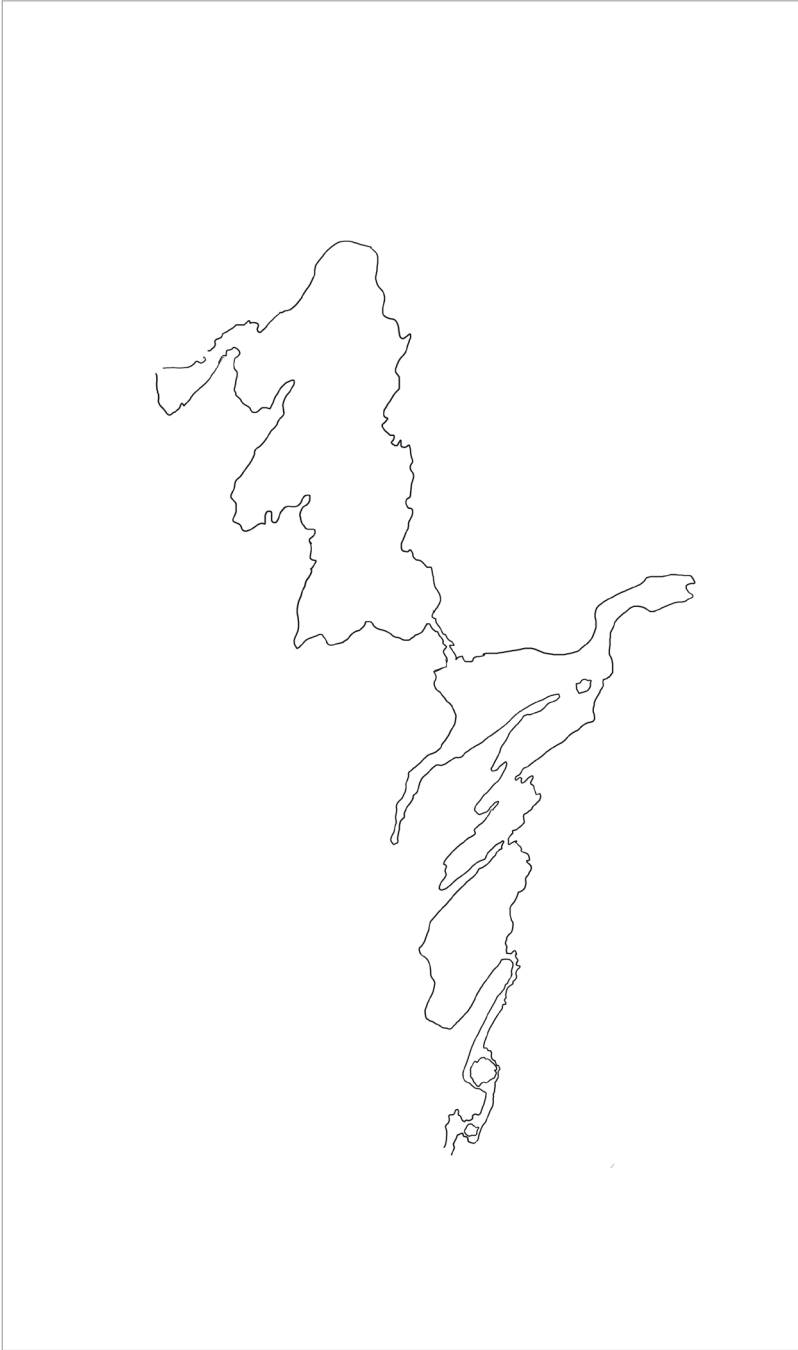
irrigation channel



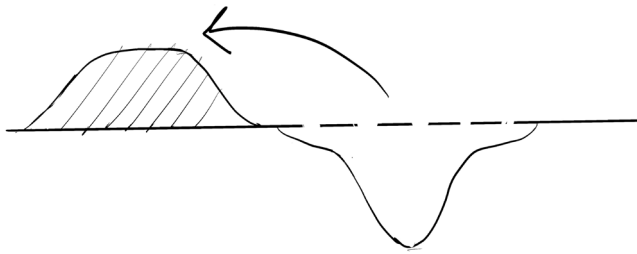
River meanders pattern



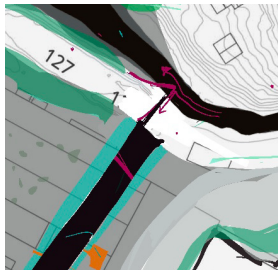
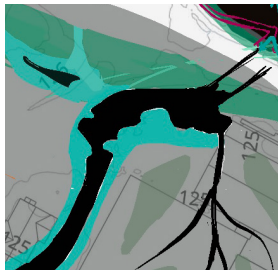
Morphology pattern



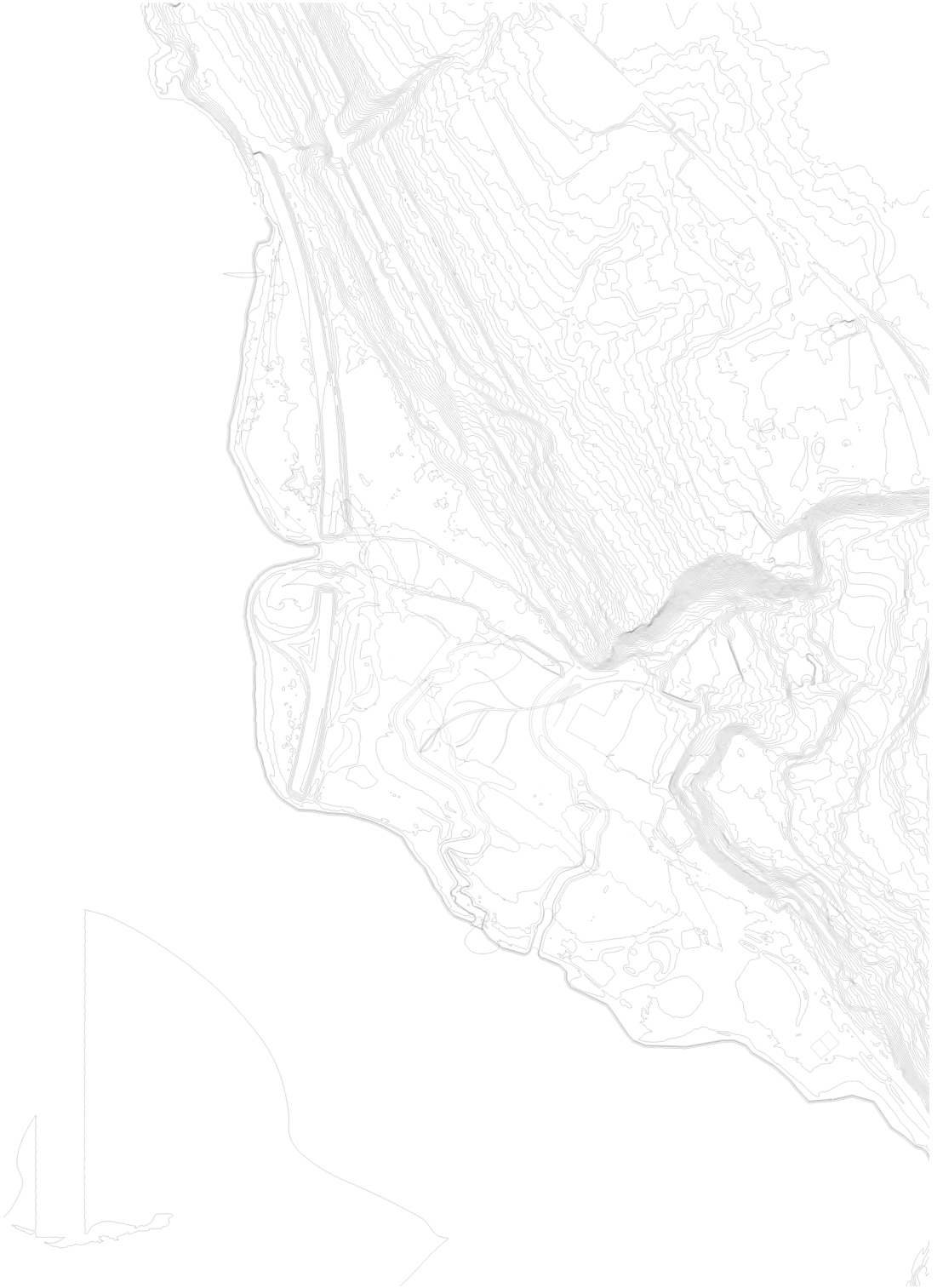
Dams pattern





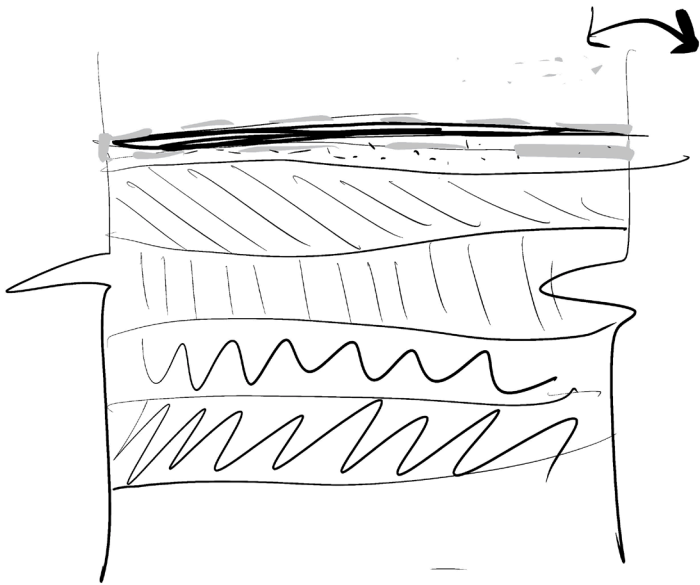


Changing directions of waterflows



Contours plan

Soil production bla bla
bla bla
bla bla



- sand
- leaves
- po
- worms







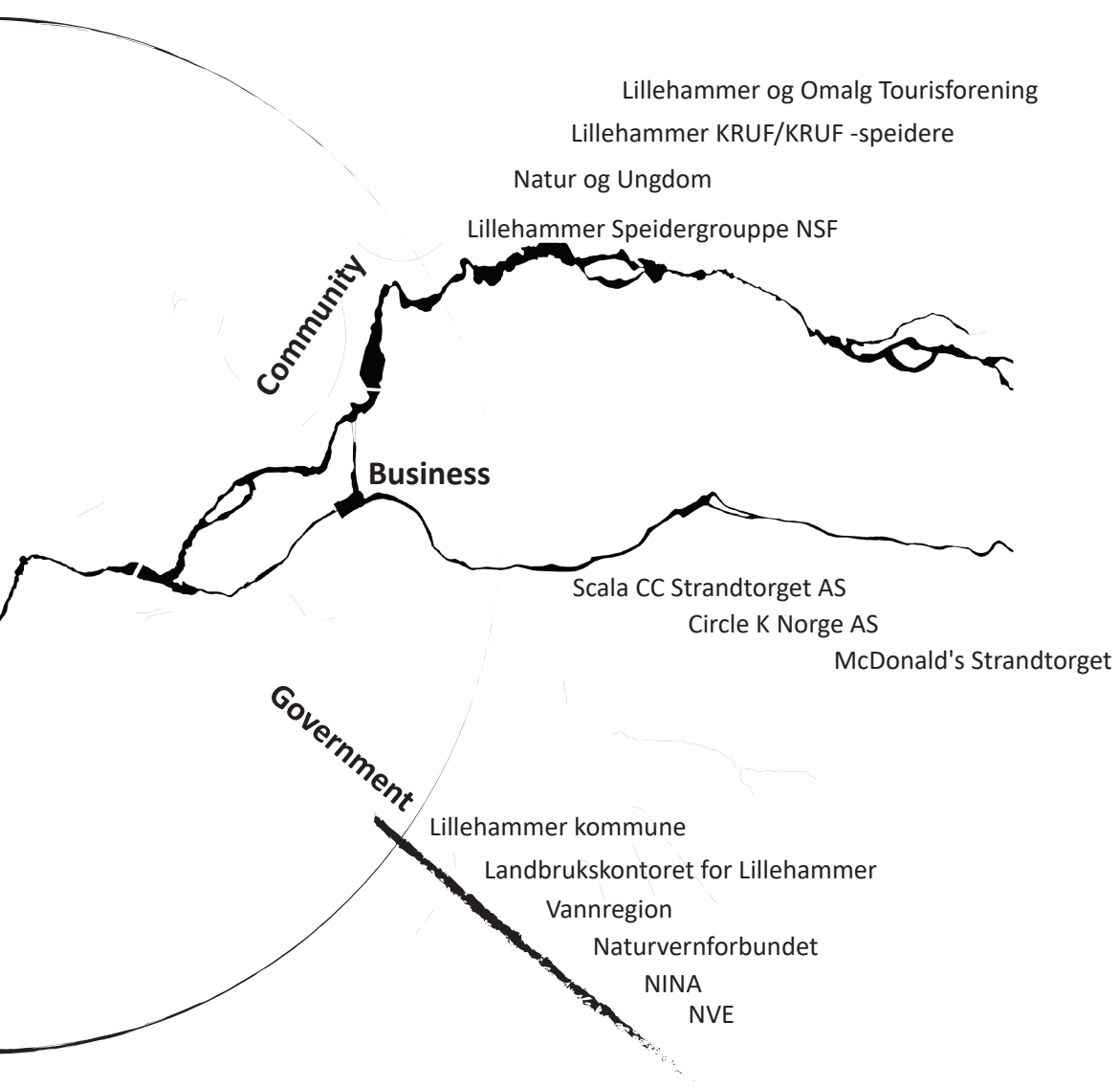


PARTICIPATORY WORKSHOP

Norges Jeger- og Fiskerforbund
Norsk Ornitologisk Forening
Oppland Orienteringskrets

Professional Associations





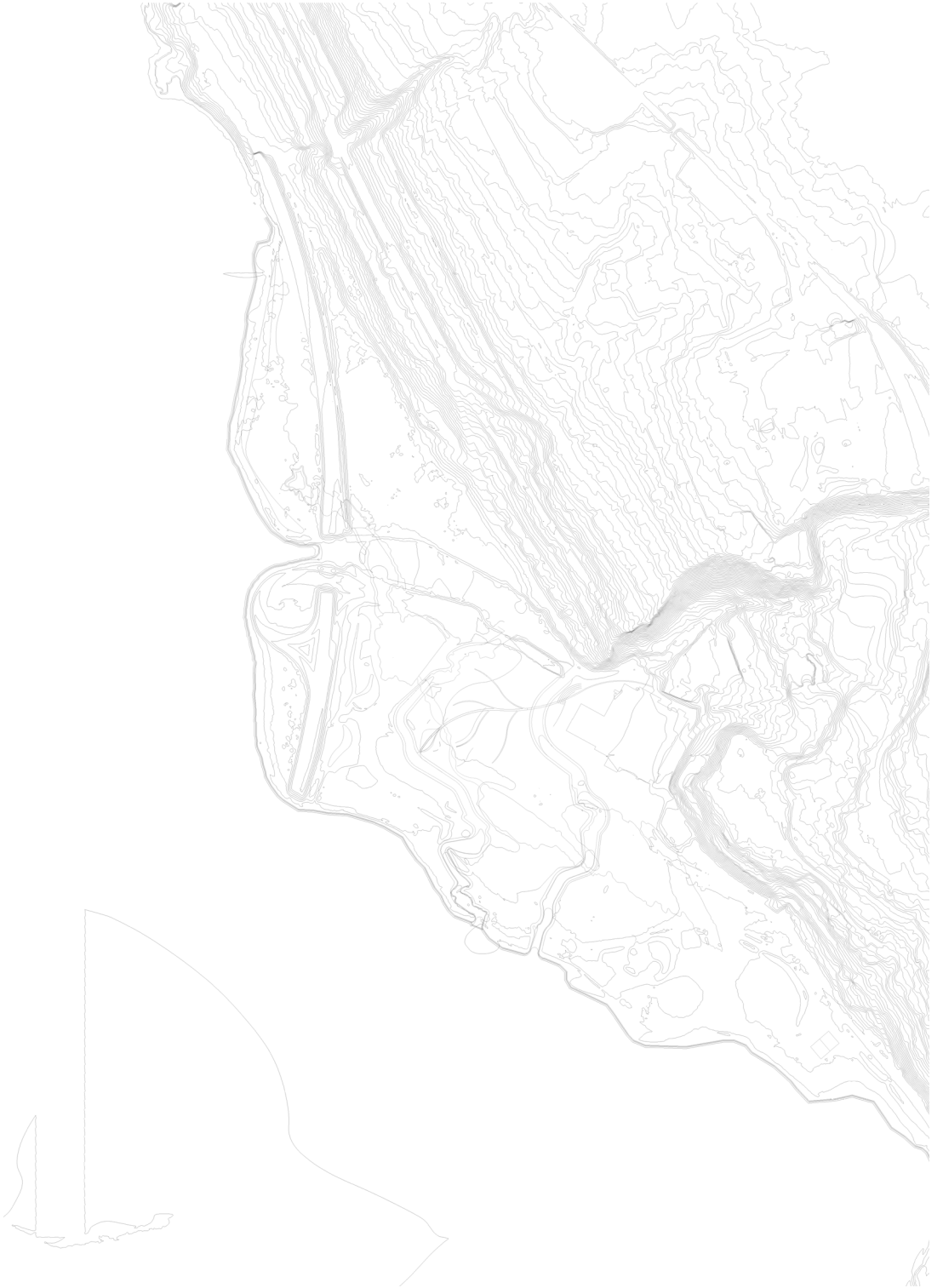
Community engagement in decision-making processes stands as a fundamental tenet of inclusive governance. Recognizing the value of community input, the process not only ensures a more comprehensive understanding of local needs but also cultivates a sense of ownership and empowerment among community members.

The workshop was held with students of Vidregeende school of Lillehammer. They had a chance to say which kind of functions they would like to have in Strandtorget. The terrain was proposed as defined and unchangeable, but it could also provide new piece of thoughts.



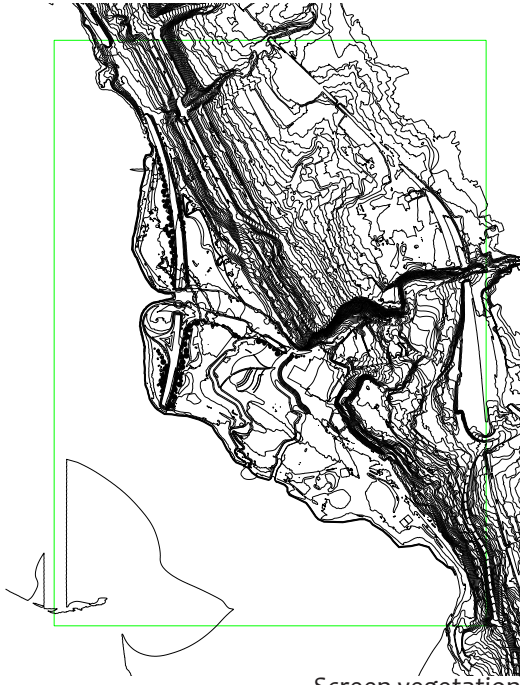




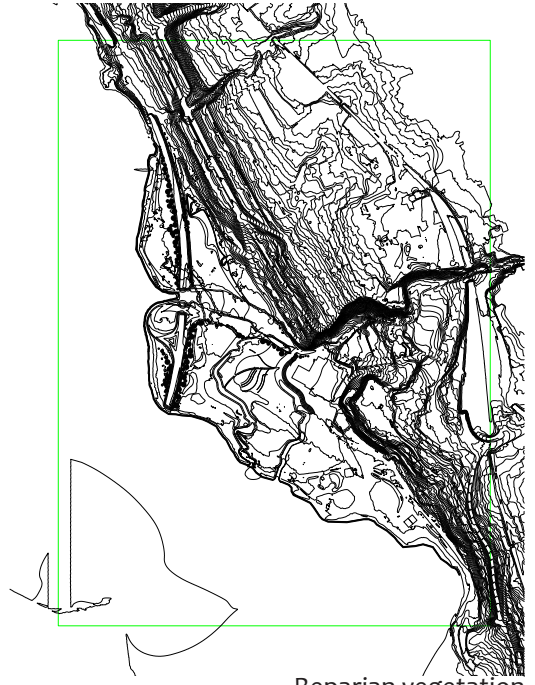


Contours plan with functions

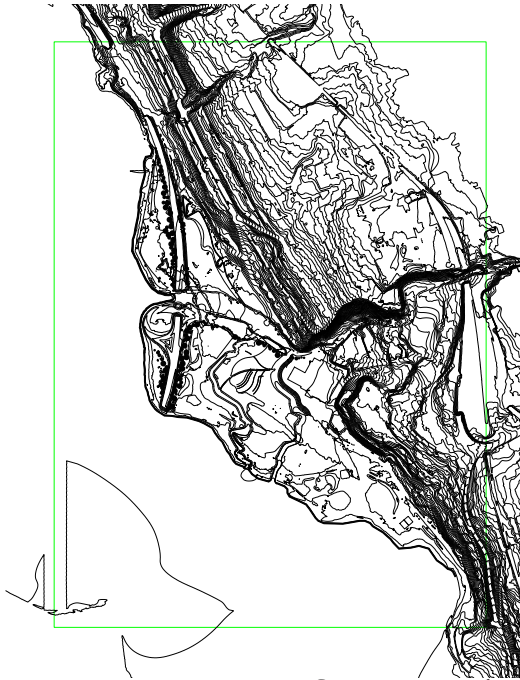




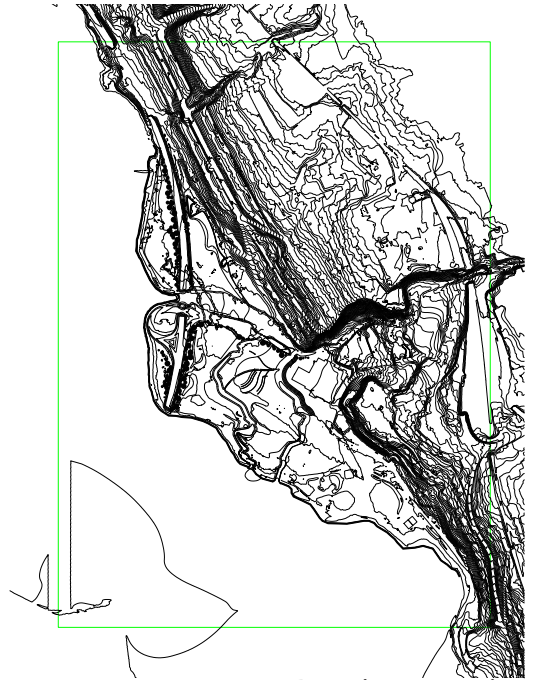
Screen vegetation



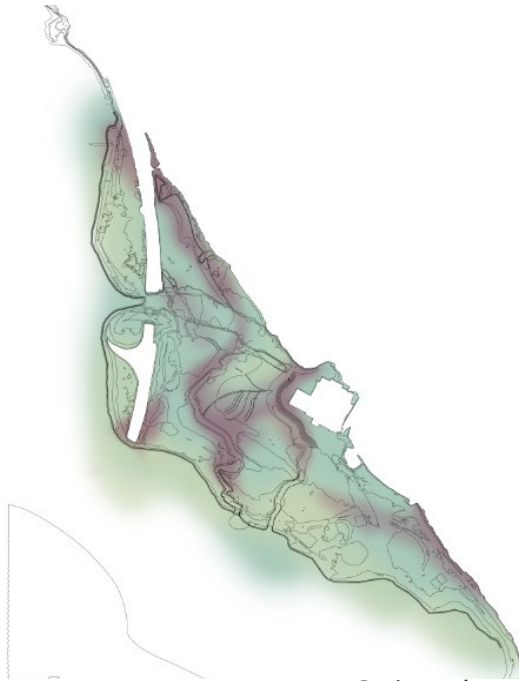
Riparian vegetation



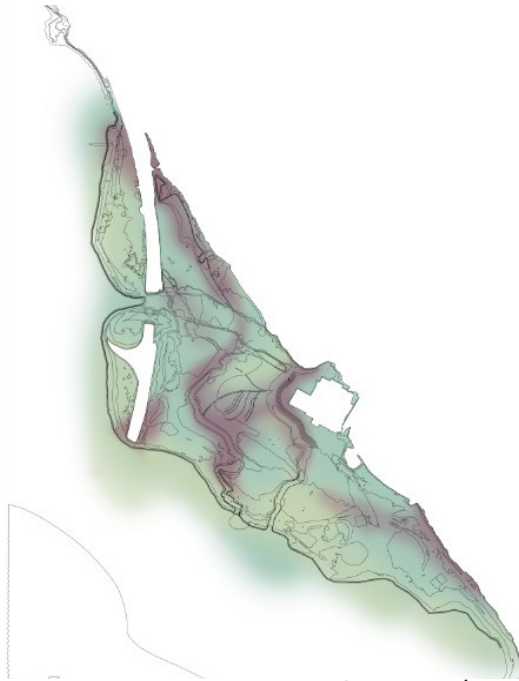
Screen vegetation



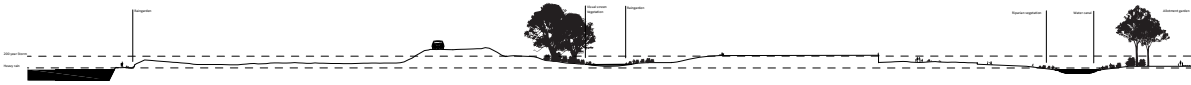
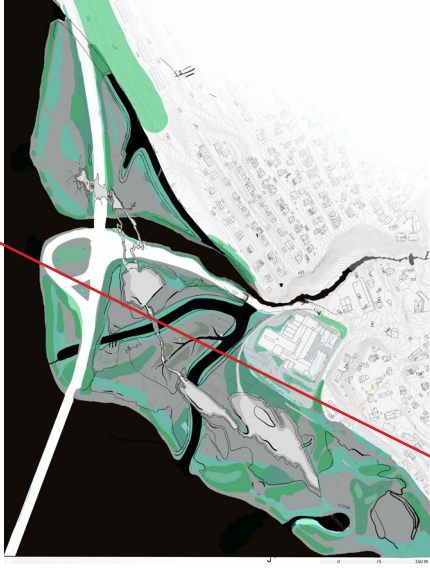
Riparian vegetation

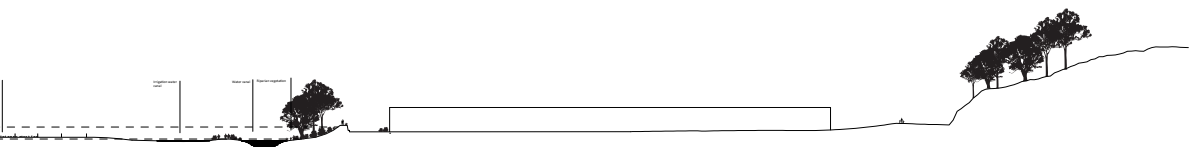


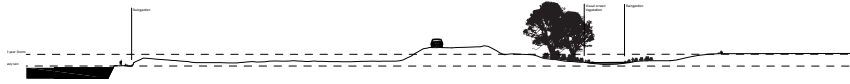
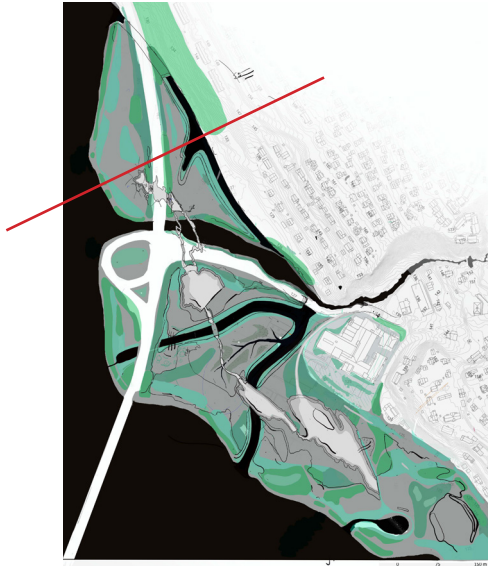
Spring colours

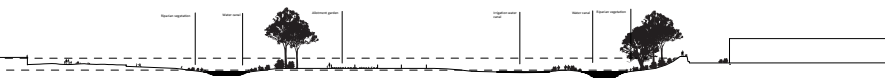


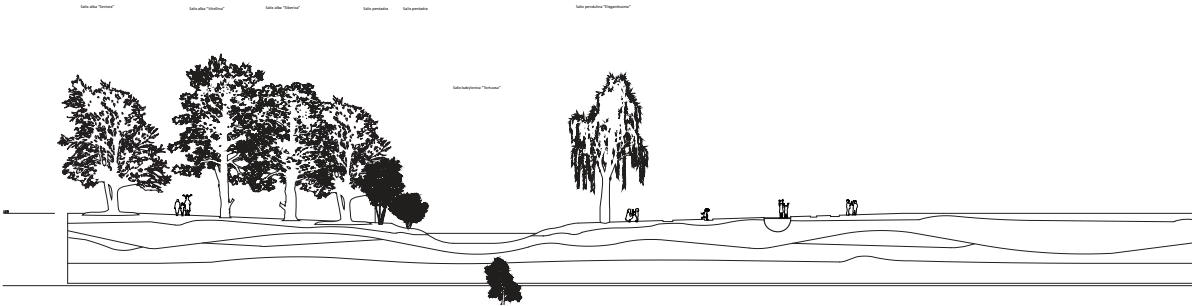
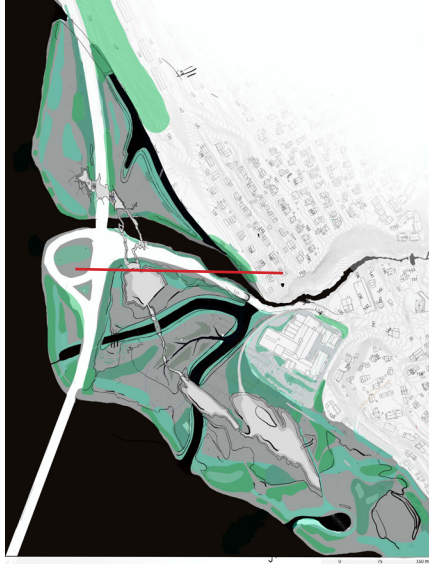
Autumn colours

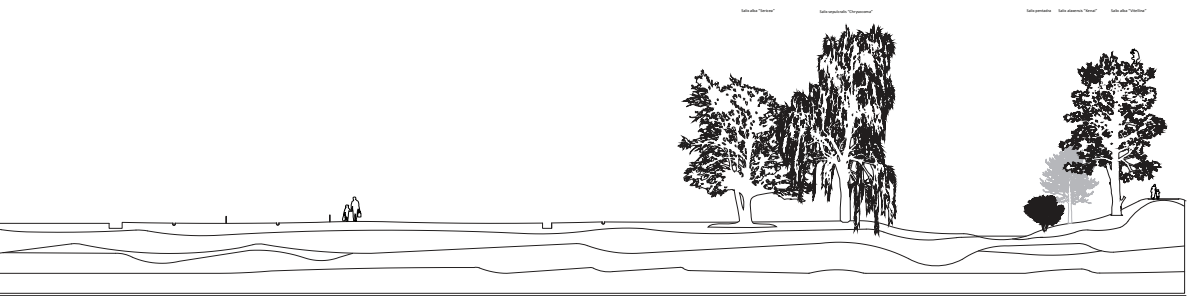












Salix alba "Sericea"

Salix alba "Vitelina"









perspective